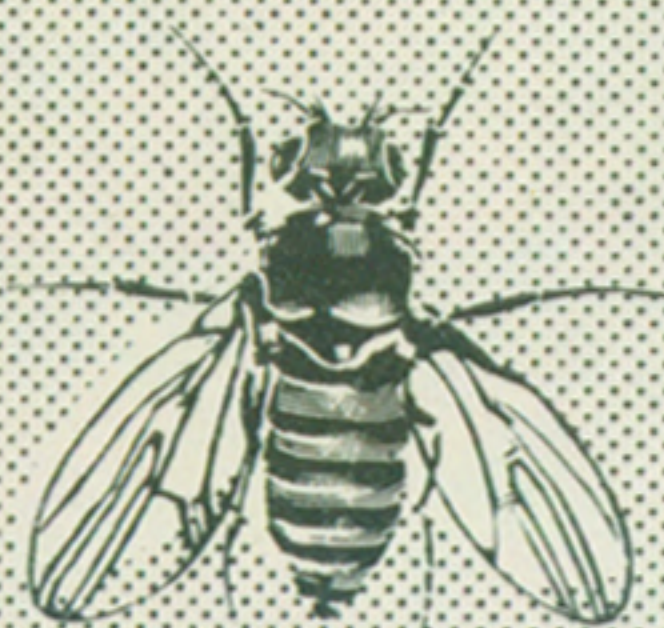
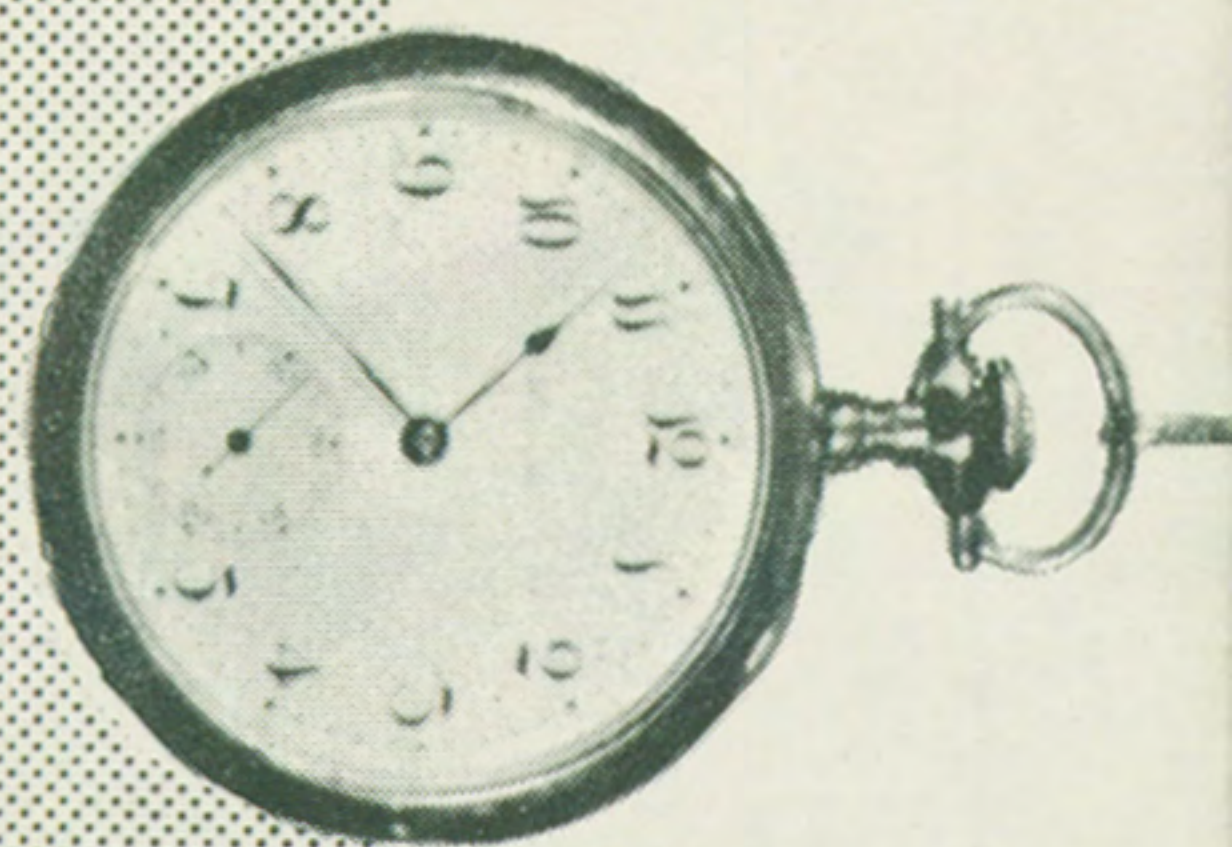


# lake central

A I R L I N E S



and **SAVE**



E F F E C T I V E

*april* 29



TICKET OFFICES

CITY	OFFICE	TELEPHONE	GROUND FARE
BLOOMINGTON, Ind.	Municipal Airport	2-2884	\$1.50
CHICAGO, Ill.	Chicago Midway Airport	Financial 6-0696	1.35
CINCINNATI, Ohio	Greater Cincinnati Airport	Dixie 1-6333	1.25
CLEVELAND, Ohio	Municipal Airport	CHerry 1-2026	1.20
COLUMBUS, Ohio	Port Columbus Airport	EXeter 8661	1.20
COLUMBUS, Ohio	Lobby, Neil House Hotel	EXeter 8661	1.20
DANVILLE, Ill.	Vermilion Co. Airport	6-4727	1.25
DAYTON, Ohio	Municipal Airport	MO 4-5857	1.15
DOVER, Ohio	New Phila. Mun. Airport	4-2729	1.00
GARY, Ind.	Municipal Airport	TUrner 54196	Taxi meter
GRAND RAPIDS, Mich.	Kent County Airport	CHerry 1-4477	1.40
INDIANAPOLIS, Ind.	Weir Cook Airport	BElmont 2434	1.25
KALAMAZOO, Mich.	Municipal Airport	3-1041	1.25
KOKOMO, Ind.	Municipal Airport	GLadstone 2-3202	1.10
LAFAYETTE, Ind.	Purdue Univ. Airport	3-2565, 3-1586	1.00*
LIMA, Ohio	Lima Airport	3-8706, 2-8780	2.00
LOGANSPORT, Ind.	Kokomo Municipal Airport	Kokomo 2-3202	Taxi meter
MANSFIELD, Ohio	Municipal Airport	6-8816	1.25
MARION, Ind.	Kokomo Municipal Airport	Kokomo 2-3202	Taxi meter
MARION, Ohio	Municipal Airport	2-2575	1.50
NEW PHILADELPHIA, Ohio	Municipal Airport	4-2729	.50
PERU, Ind.	Kokomo Municipal Airport	Kokomo 2-3202	Taxi meter
PITTSBURGH, Pa.	Greater Pittsburgh Airport	SPoulding 1-4938	1.30
RICHMOND, Ind.	Municipal Airport	4-1121	1.50
SOUTH BEND, Ind.	St. Joseph Co. Airport	CEntrol 4-4172	1.00
SPRINGFIELD, Ohio	Dayton Municipal Airport	ENterprise 5-6408	2.50
TERRE HAUTE, Ind.	Hulman Field	Crawford 4227	1.25
YOUNGSTOWN, Ohio	Municipal Airport	Liberty 5-3174	1.50
ZANESVILLE, Ohio	Municipal Airport	Warren 5-6801	1.50
		GLadstone 2-7561	1.50

Ground Fares based on Airport Limousine only - Taxi fares slightly higher.  
 \* For one or two passengers. Each additional passenger 25¢.  
 † For one or two passengers. Each additional passenger 75¢.  
 All fares shown are to downtown area or specific hotels. Fares quoted include Federal Tax.

# lake central

AIR LINES

ONE WAY PASSENGER FARES  
 Save 10% on Return Trip

AND BETWEEN	Bl'm- ing- ton	Chi- ago	Cin- cin- noti	Cleve- land	Co- lum- bus	Dan- ville	Dayton Spring- field	Dover New Phila.	Gary	Grand R'pids	Indi- ana- polis	Kala- ma- zoo
BLOOMINGTON, Ind.	.....											
CHICAGO, Ill.	14.00	.....										
CINCINNATI, O.	11.40	17.60	.....									
CLEVELAND, O.	20.70	25.10	15.00	.....								
COLUMBUS, O.	15.90	20.40	8.85	8.05	.....							
DANVILLE, Ill.	7.00	7.90	15.50	22.35	17.45	.....						
DAYTON, SPR'FLD, O.	11.45	16.05	4.50	11.50	5.35	13.10	.....					
DOVER - NEW PHIL., O.	22.00	25.70	15.80	8.20	7.00	24.40	12.40	.....				
GARY, Ind.	12.70	2.50	16.30	23.80	19.10	9.20	14.80	24.40	.....			
GRAND RAPIDS, Mich.	18.70	21.10	22.20	27.80	23.10	21.10	18.65	28.40	19.80	.....		
INDIANAPOLIS, Ind.	3.80	11.00	7.60	17.15	12.25	7.90	7.90	19.20	9.70	15.90	.....	
KALAMAZOO, Mich.	15.80	18.20	19.30	24.90	20.20	18.20	15.75	25.50	16.90	3.90	13.00	.....
KOKOMO, Ind.	7.30	9.70	12.10	16.40	13.80	9.70	10.40	17.00	8.40	12.40	4.50	9.50
LAFAYETTE, Ind.	7.60	7.70	12.40	19.40	17.00	10.00	12.70	20.00	6.40	15.40	4.80	12.50
LIMA, O.	13.50	15.90	16.40	10.20	7.60	15.90	12.90	10.80	14.60	18.60	10.70	15.70
MANSFIELD, O.	19.40	21.80	14.70	4.30	5.90	21.40	11.20	4.90	20.50	24.50	16.20	21.60
MARION, O.	17.30	19.70	12.60	6.40	3.80	20.20	9.10	7.00	18.40	22.40	15.00	19.50
PITTSBURGH, Pa.	25.65	27.25	18.70	12.20	10.85	27.30	15.20	5.00	26.00	32.40	22.10	29.50
RICHMOND, Ind.	8.60	16.05	4.10	14.70	8.50	11.00	3.20	14.50	13.20	17.90	5.80	15.20
SOUTH BEND, Ind.	12.40	14.80	14.95	21.50	15.80	14.80	11.45	22.10	13.50	7.30	9.60	4.40
TERRE HAUTE, Ind.	3.70	11.20	14.95	20.70	15.90	4.30	11.45	22.90	12.50	20.45	4.55	17.55
YOUNGSTOWN, O.	23.60	30.00	18.70	12.50	11.10	25.00	15.20	5.30	28.70	32.70	19.85	29.80
ZANESVILLE, O.	19.40	24.70	13.10	12.30	4.30	21.70	9.60	3.70	23.40	26.40	16.50	23.50

AND BETWEEN	Ko- ko- mo	La- fay- ette	Lima	Mans- field	Ma- rion	Pitts- b'rg'h	Rich- mond	South Bend	Terre Haute	Y'ngs- town	Z'nes- ville
KOKOMO, Ind.	.....										
LAFAYETTE, Ind.	4.00	.....									
LIMA, O.	7.20	10.20	.....								
MANSFIELD, O.	13.10	16.10	6.90	.....							
MARION, O.	11.00	14.00	4.80	3.10	.....						
PITTSBURGH, Pa.	21.00	24.00	14.80	8.90	11.00	.....					
RICHMOND, Ind.	9.30	9.60	15.10	13.40	11.30	18.40	.....				
SOUTH BEND, Ind.	6.10	9.10	12.30	18.20	16.10	23.05	10.90	.....			
TERRE HAUTE, Ind.	9.05	9.35	15.25	20.70	19.55	25.65	10.35	14.10	.....		
YOUNGSTOWN, O.	21.30	24.30	15.10	9.20	11.30	9.30	18.40	26.90	24.40	.....	
ZANESVILLE, O.	17.10	20.10	10.90	7.60	7.10	7.70	11.80	20.10	20.20	8.00	.....



Lake Central airlines WEIR COOK AIRPORT INDIANAPOLIS, INDIANA

General Information

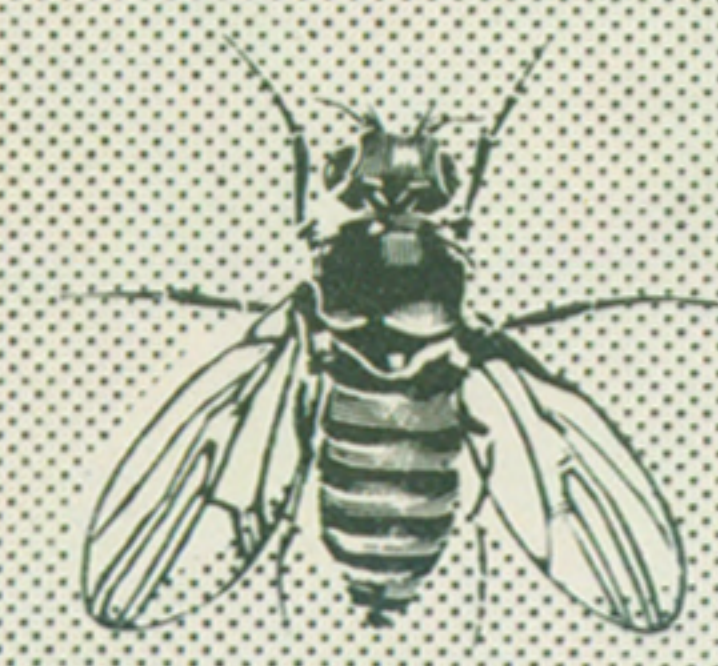
**RESERVATIONS:** All seats are reserved, and reservations are tentative until tickets have been purchased. Passengers are urged to make reservations in advance with nearest office listed inside folder, or call your local Travel Agent.

**CANCELLATION:** The company reserves the right to cancel bookings before passage or enroute whenever such action is deemed advisable or necessary. In all events the passenger's sole recourse shall be the recovery of the fare paid for the unused portion of the ticket.

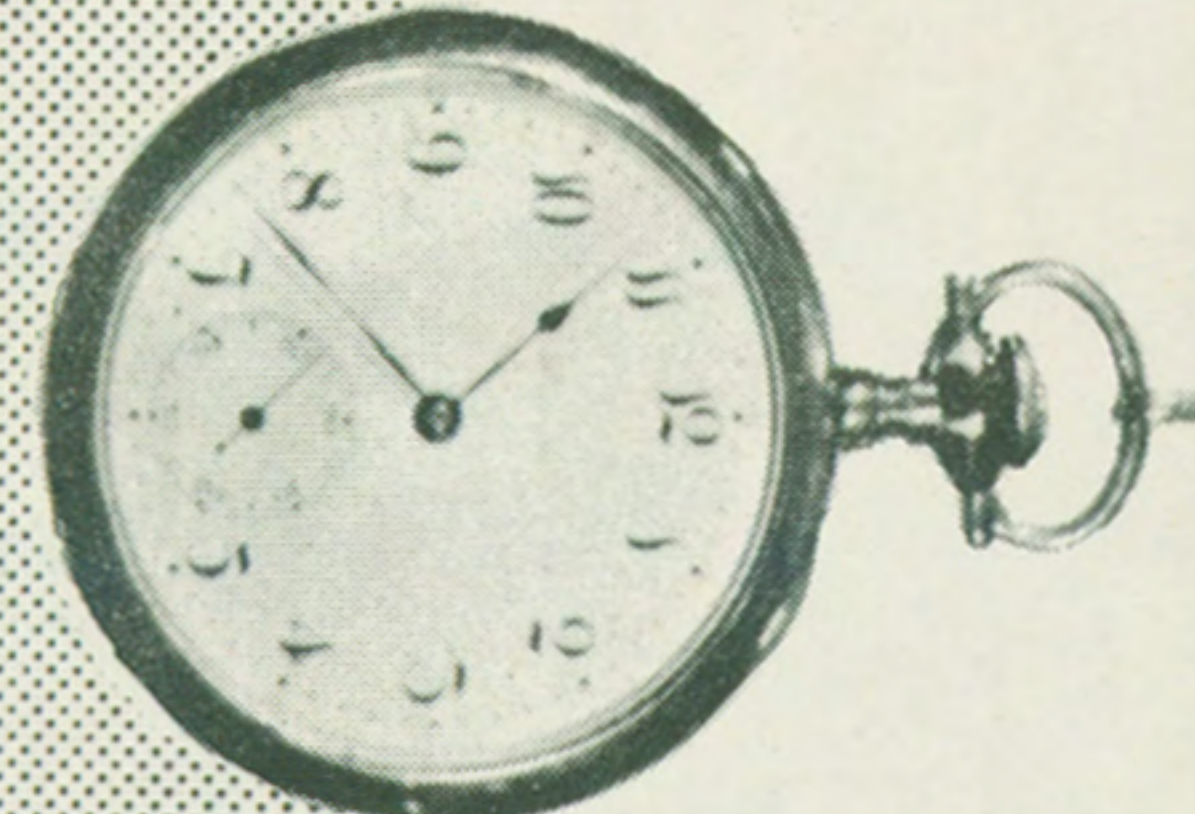
**CHILDREN:** One child under two, not occupying a separate seat and accompanied by a fare-paying passenger at least twelve years of age, will be carried free. Children over two and under twelve pay half fare. Unaccompanied children over five and under eight will be accepted for passage upon payment of the full adult fare.

**BAGGAGE:** Forty (40) pounds of baggage carried free. Baggage in excess of this amount, including parcels, briefcases, portable typewriters and cameras, will be charged for at published excess rates. Unless extra value is declared and charges are paid before departure, the company's liability is limited to \$100 per passenger or the actual value thereof whichever is less.

**SCHEDULES:** Schedules shown are expected departures, subject to change without notice, and are not guaranteed.



and SAVE



EFFECTIVE April 29



