

Midway **Airlines**[®]

TIMETABLE
EFFECTIVE JUNE 1, 1985



MIDWAY METROLINK[®]

SERVING: Boston, Chicago, Cleveland, Dallas/Ft. Worth, Detroit, Kansas City, Minneapolis/St. Paul, New York (LaGuardia, White Plains), Philadelphia, and Washington, D.C. (National).

MIDWAY EXPRESSSM

SERVING: Chicago, Cincinnati, Cleveland, Detroit, Ft. Lauderdale, Miami, Orlando, St. Croix, V.I., St. Thomas, V.I., Tampa, and West Palm Beach.

MIDWAY AIRLINES®

SMALL PACKAGE SERVICE

The Sure Way To Same Day Delivery

Now, Midway Metrolink® and Midway ExpressSM combine to add more destinations to our already proven airport to airport service. Midway specializes in **Small Package Service**; that's why your shipment gets top priority.

Just drop off your package, up to 70 pounds, at our airport ticket counter 30 minutes prior to departure, and you're assured that your package will be on the next flight.

Rely on the service and count on the economy. The price is a low \$25.00 up to 50 lbs. And only \$35.00 from 51 lbs. to 70 lbs.

Next time, try Midway's **Small Package Service**, the sure way to same day delivery. For information or a credit application call 1-800-621-5757.

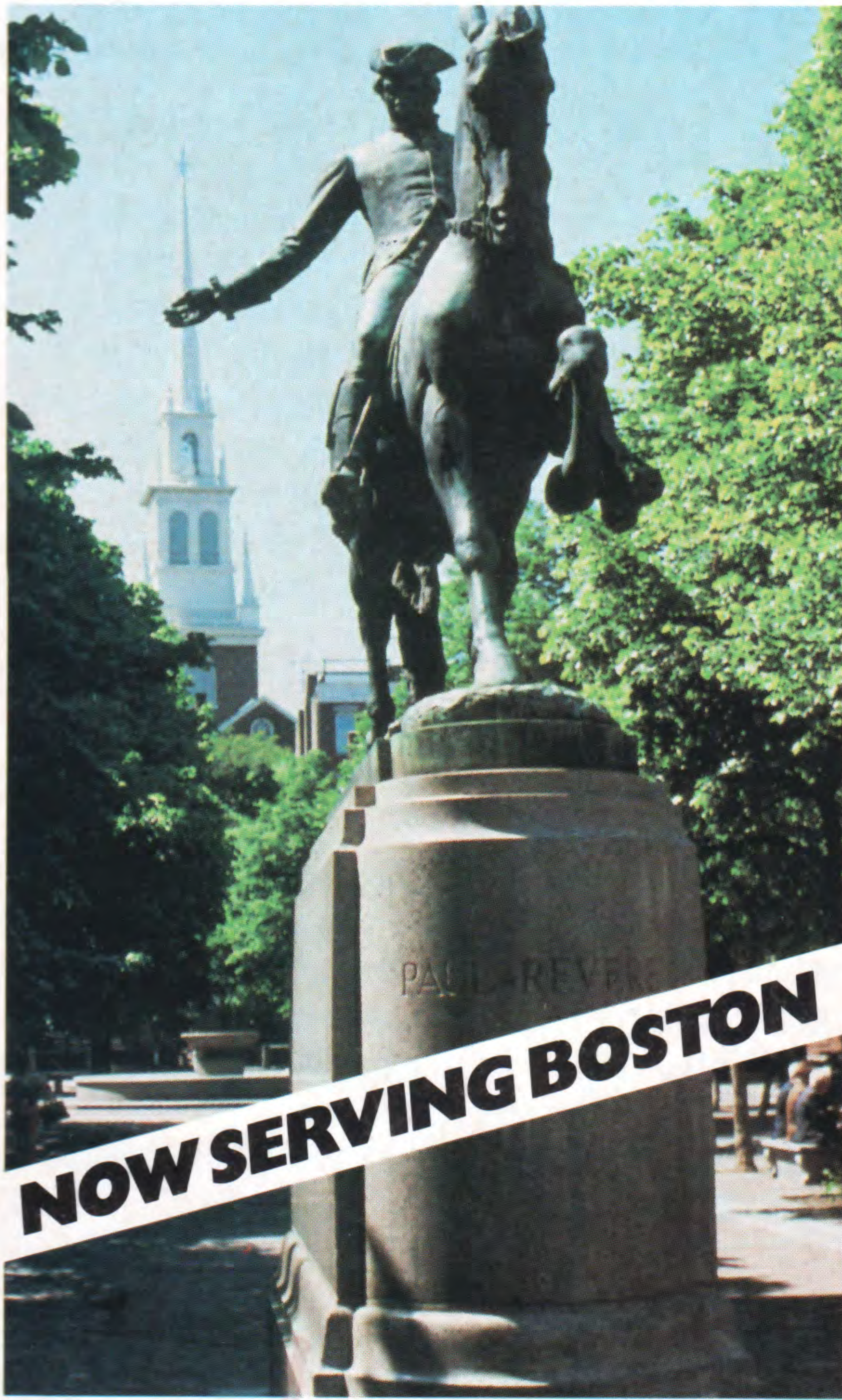


Maximum value per pkg. is \$500.
No hazardous/perishable materials will be accepted.

© 1985 Midway Airlines, Inc.

Midway Airlines®

TIMETABLE EFFECTIVE JUNE 1, 1985



NOW SERVING BOSTON

MIDWAY METROLINK®

SERVING: Boston, Chicago, Cleveland, Dallas/Ft. Worth, Detroit, Kansas City, Minneapolis/St. Paul, New York (LaGuardia, White Plains), Philadelphia, and Washington, D.C. (National).

MIDWAY EXPRESSSM

SERVING: Chicago, Cincinnati, Cleveland, Detroit, Ft. Lauderdale, Miami, Orlando, St. Croix, V.I., St. Thomas, V.I., Tampa, and West Palm Beach.

Midway Airlines[®] with two great services.

MetrolinkSM Service...

expanding, effective June 15, to MetroClubSM and MetroClassSM.

MetroClub is the businessman's favorite with two-abreast seating at less than coach fares.

MetroClass is the new approach to coach that delivers seating with more leg room and our fine Metrolink features—more overhead luggage space, fine light cuisine, complimentary wines, and hot towel service—at fares better than you'll find most anywhere in the air and without all the restrictions.

All Midway Metrolink[®] flights in this schedule are printed in burgundy.

Express Service...

with low fares that make places you thought you could only dream about come true. Great vacation destinations like Walt Disney World in Orlando, or the beaches of West Palm Beach and Fort Lauderdale. Or great shopping destinations like St. Thomas and St. Croix in the Virgin Islands. Midway ExpressSM makes flying to the sun more fun.

All Midway Express flights in this schedule are printed in black.



&



BOSTON

Reservations and Information 1-800-621-5700

Leave	Arrive	Freq.	Flight Number	Via/ Stops	Meals	Remarks	Leave	Arrive	Freq.	Flight Number	Via/ Stops	Meals	Remarks
To Chicago Midway Airport							From Chicago Midway Airport						
7 40a	9 55a	X7	339	1	B		7 05a	10 56a	X7	334	1	S	
1 10p	3 25p		331	1	S		12 05p	3 56p		330	1	S	
4 35p	6 50p	X6	337	1	S		3 55p	7 46p	X6	336	1	D	

To Cleveland

7 40a	9 30a	X7	339	0	B	
1 10p	3 00p		331	0	S	
4 35p	6 25p	X6	337	0	D	

From Cleveland

9 25a	10 56a	X7	334	0	S	
2 25p	3 56p		330	0	S	
6 15p	7 46p	X6	336	0	D	

To Dallas/Ft. Worth

7 40a	3 10p	X7	339/309	MDW	L	
1 10p	6 15p	6	331/305	MDW	S	
1 10p	7 40p		331/307	MDW	D	
4 35p	9 35p	X6	337	2	D	

From Dallas/Ft. Worth

7 00a	3 56p	X7	304/330	MDW	B	
9 30a	3 56p	7	318/330	MDW	S	
12 30p	7 46p	X6	308/336	MDW	D	

To Detroit

1 10p	6 10p		331/530	CLE	S	
-------	-------	--	---------	-----	---	--

From Detroit

7 35a	10 56a	X7	515/334	CLE	S	
-------	--------	----	---------	-----	---	--

To Kansas City

7 40a	2 00p	X7	339/129	MDW	B	
1 10p	5 15p		331/153	MDW	S	
4 35p	8 30p	X6	337/151	MDW	S	

From Kansas City

10 20a	3 56p		154/330	MDW	S	
2 20p	7 46p	X6	122/336	MDW	D	

To Minneapolis/St. Paul

7 40a	11 30a	X7	339/397	MDW	B	
1 10p	5 10p		331/365	MDW	S	
4 35p	9 20p	X6	337/389	MDW	D	

From Minneapolis/St. Paul

10 20a	3 56p		344/330	MDW	S	
2 25p	7 46p	X6	172/336	MDW	D	

CHICAGO

Midway Airport

Reservations and Information (312) 767-3400 or 1-800-621-5700

To Boston

7 05a	10 56a	X7	334	1	S	
12 05p	3 56p		330	1	S	
3 55p	7 46p	X6	336	1	D	

From Boston

7 40a	9 55a	X7	339	1	B	
1 10p	3 25p		331	1	S	
4 35p	6 50p	X6	337	1	S	

To Cincinnati

9 00a	11 00a		565	0		
4 20p	6 20p		567	0		
7 15p	9 15p	X6	518	0		

From Cincinnati

8 00a	8 00a		511	0		
4 15p	4 15p		566	0		
6 40p	6 40p	X6	519	0		

To Cleveland

7 05a	9 05a	X7	334	0	S	
9 05a	11 05a	X7	138	0	S/	
12 05p	2 05p		330	0	S	
2 45p	4 45p		140	0	S/	
3 55p	5 55p	X6	336	0	S/	
7 05p	9 05p	X6	332	0	S/	

From Cleveland

8 00a	8 05a	X7	333	0	S	
9 50a	9 55a	X7	339	0	S/	
12 20p	12 25p		135	0	S	
3 20p	3 25p		331	0	S/	
5 05p	5 10p	X6	141	0	S	
6 45p	6 50p	X6	337	0	S	

To Dallas/Ft. Worth

8 45a	11 00a		333	0	B	
12 55p	3 10p		309	0	L	
4 00p	6 15p	6	305	0	S	
5 25p	7 40p		307	0	D	
7 20p	9 35p	X6	337	0	S	

From Dallas/Ft. Worth

7 00a	9 00a	X7	304	0	B	
9 30a	11 30a	7	318	0	S	
12 30p	2 30p		308	0	L	
4 35p	6 35p		332	0	D	
6 35p	8 35p	6	350	0	D	
7 59p	9 59p	X6	316	0	S	

X-Except 2-Tuesday 4-Thursday 6-Saturday E-Effective
1-Monday 3-Wednesday 5-Friday 7-Sunday D-Discontinued
MetroClub Meal/MetroClass Meal S-Snack B-Breakfast L-Lunch D-Dinner
Contact Midway Airlines or Your Travel Agent for Details. **Page 3**





FEATURING...

KANSAS CITY

Reservations and Information 1-800-621-5700

To Boston

10 20a 3 56p 154/330 MDW S
2 20p 7 46p X6 122/336 MDW D

From Boston

7 40a 2 00p X7 339/129 MDW B
1 10p 5 15p 331/153 MDW S
4 35p 8 30p X6 337/151 MDW S

To Chicago

Midway Airport

7 10a 8 20a X7 138 0 S
10 20a 11 30a 154 0 S/
2 20p 3 30p 122 0 S/
3 50p 5 00p 150 0 S/
5 35p 6 45p X6 152 0 S

From Chicago

Midway Airport

8 45a 10 00a X7 157 0 S
12 45p 2 00p 129 0 S
2 15p 3 30p 181 0 S/
4 00p 5 15p 153 0 S/
7 15p 8 30p X6 151 0 S/

To Cincinnati

7 10a 11 00a X7 138/565 MDW S
2 20p 6 20p 122/567 MDW S
5 35p 9 15p X6 152/518 MDW S

From Cincinnati

8 00a 10 00a X7 511/157 MDW S
6 40p 8 30p X6 519/151 MDW S

To Cleveland

7 10a 11 05a X7 138 1 S
10 20a 2 05p 154/330 MDW S
2 20p 5 55p X6 122/336 MDW S
5 35p 9 05p X6 152/332 MDW S

From Cleveland

8 00a 10 00a X7 333/157 MDW S
12 20p 2 00p 135/129 MDW S
3 20p 5 15p 331/153 MDW S
6 45p 8 30p X6 337/151 MDW S

To Dallas/Ft. Worth

7 10a 11 00a X7 138/333 MDW B
10 20a 3 10p 154/309 MDW L
2 20p 6 15p 6 122/305 MDW S
3 50p 7 40p 150/307 MDW D
5 35p 9 35p X6 152/337 MDW S

From Dallas/Ft. Worth

7 00a 2 00p X7 304/129 MDW B
9 30a 2 00p 7 318/129 MDW S
12 30p 5 15p 308/153 MDW L
4 35p 8 30p X6 332/151 MDW S

To Detroit

7 10a 11 20a X7 138/304 MDW S
10 20a 1 50p 154/318 MDW S
2 20p 5 50p X6 122 1 S
5 35p 9 20p X6 152/312 MDW S

From Detroit

8 00a 10 00a X7 301/157 MDW S
12 30p 2 00p 309/129 MDW S
3 30p 5 15p 305/153 MDW S
7 10p 8 30p X6 311/151 MDW S

To Ft. Lauderdale

3 50p 11 05p 150/519 MDW S
5 35p 11 05p X6 152/519 MDW S

From Ft. Lauderdale

1 10p 5 15p 542/153 MDW S

To Miami

3 50p 9 25p 150/549 MDW S
5 35p 11 50p X6 152/519 MDW S

From Miami

9 05a 2 00p 544/129 MDW S
12 15p 5 15p 542/153 MDW S

To Minneapolis/St. Paul

7 10a 9 54a X7 138/375 MDW S
10 20a 2 05p 154/177 MDW S
2 20p 5 10p 122/365 MDW S
5 35p 8 10p X6 152/379 MDW S

From Minneapolis/St. Paul

7 00a 10 00a X7 386/157 MDW S
10 20a 2 00p 344/129 MDW S
12 30p 3 30p 376/181 MDW S
2 25p 5 15p 172/153 MDW S
5 30p 8 30p X6 378/151 MDW S

To New York/White Plains

Airports: L-LaGuardia W-White Plains

7 10a 12 00nL X7 138/386 MDW B
10 20a 3 00pL 154/390 MDW L
10 20a 5 05pWX6 154/142 MDW L
2 20p 8 00pL 122/388 MDW D
3 50p 8 55pL X6 150/396 MDW D
5 35p 9 55pL X6 152/180 MDW D

From New York/White Plains

Airports: L-LaGuardia W-White Plains

7 20aL 10 00a X67 185/157 MDW B
8 25aW 2 00p X7 183/129 MDW S
11 30aL 2 00p X67 193/129 MDW L
11 30aL 2 00p 67 393/129 MDW L
2 30pL 5 15p 365/153 MDW S
4 00pL 8 30p X6 391/151 MDW S

To Orlando

7 10a 2 15p X7 138/565 MDW S
10 20a 4 15p 154/545 MDW S
2 20p 9 05p X6 122/509 DTW S

From Orlando

4 45p 8 30p X6 518/151 MDW S

Check Our Metro-MiserSM Fares.

They're better than most airlines' "Special Fares." Just take a look:

Chicago to New York/LaGuardia	\$89
Minneapolis/St. Paul to Chicago	\$54
Washington, D.C. to Chicago	\$89
Chicago to Detroit	\$44
Chicago to Philadelphia	\$89
Cleveland to Chicago	\$54
Chicago to Dallas/Ft. Worth	\$99
Kansas City to Chicago	\$54

Ask about our Metro-Miser fares to other destinations.

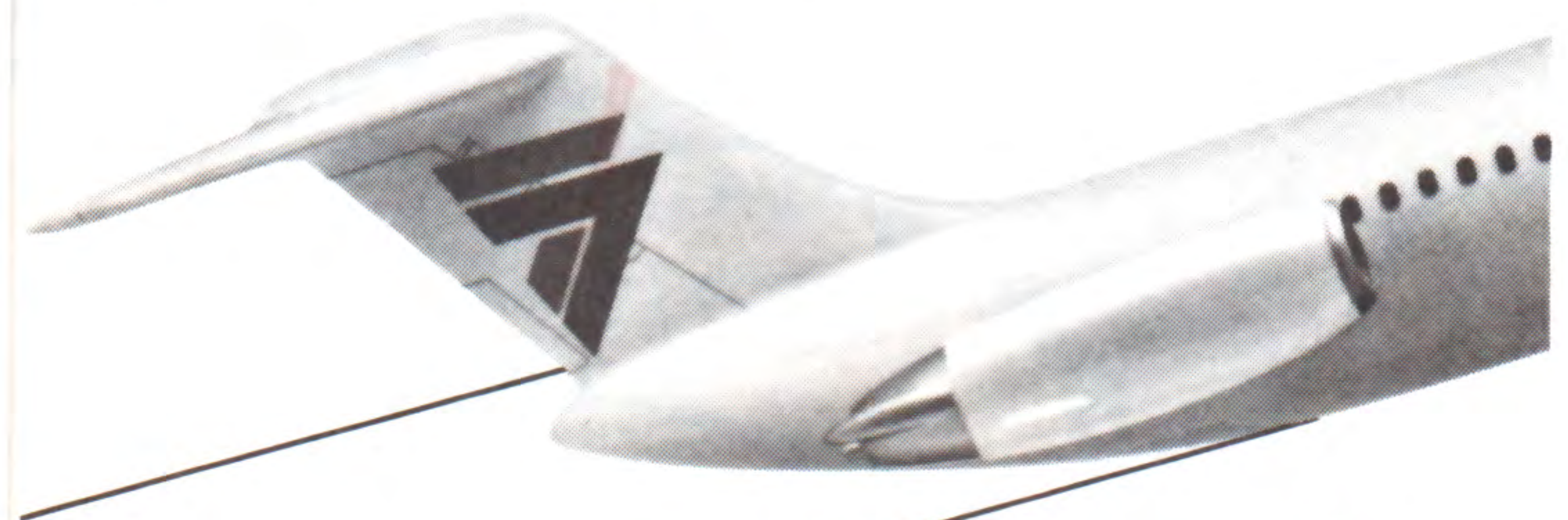
Also check Midway ExpressSM for great fares to great places:

Chicago to Orlando	\$99
Chicago to Miami	\$99
Ft. Lauderdale to Chicago	\$99
Chicago to St. Thomas	\$209*
Tampa to Chicago	\$99
Chicago to St. Croix	\$209*
West Palm Beach to Chicago	\$99

For a complete list of our destinations and low fares, call Midway Airlines® at 1-800-621-5700, in Chicago (312) 767-3400, or call your travel agent.

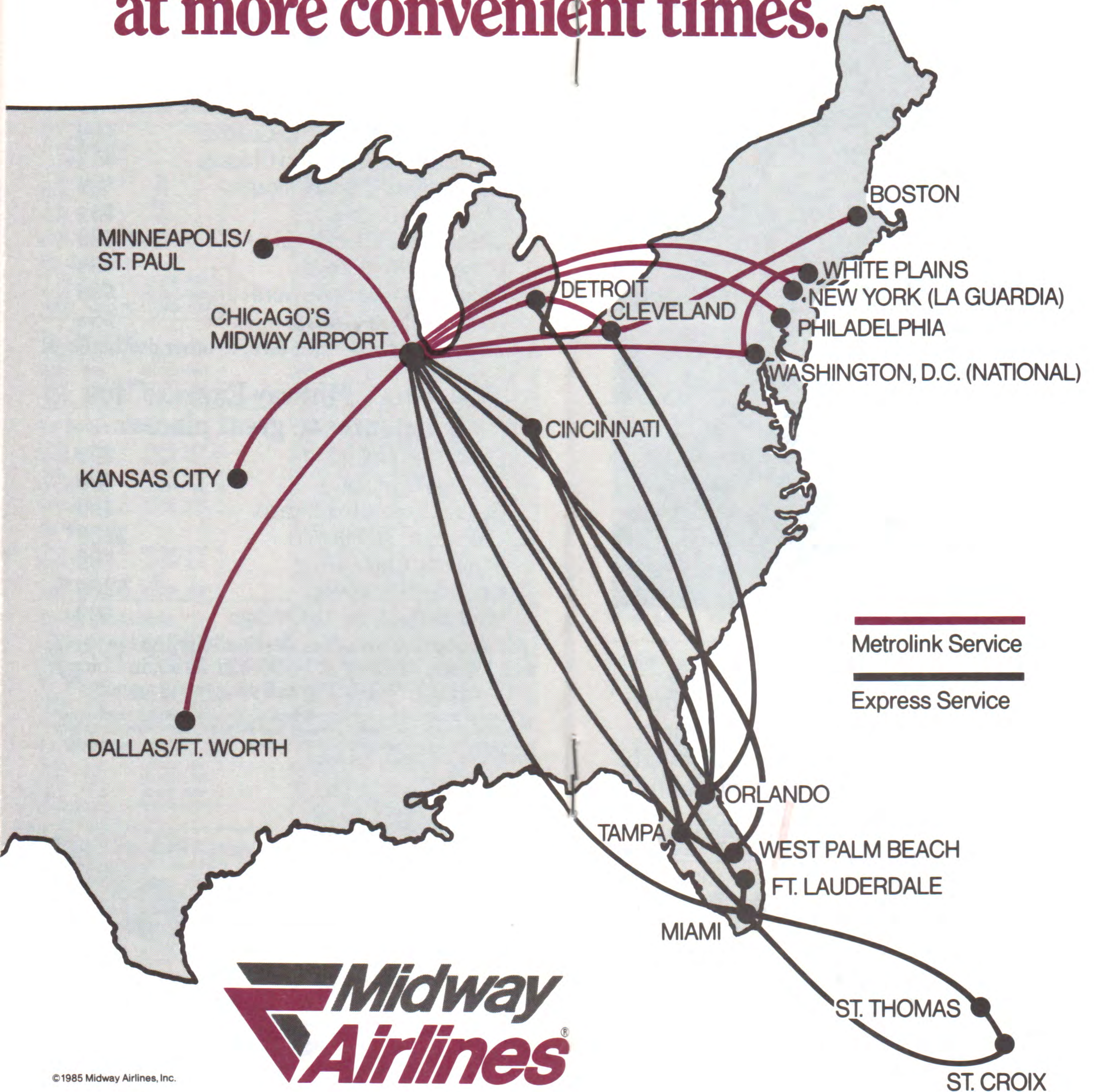
Fares listed are one way but may require a round trip purchase. Metro-Miser fares require purchase at least 14 days in advance of travel. Seats are limited. Some restrictions apply. All schedules and fares subject to change without notice.

*\$3.00 international departure tax applies.

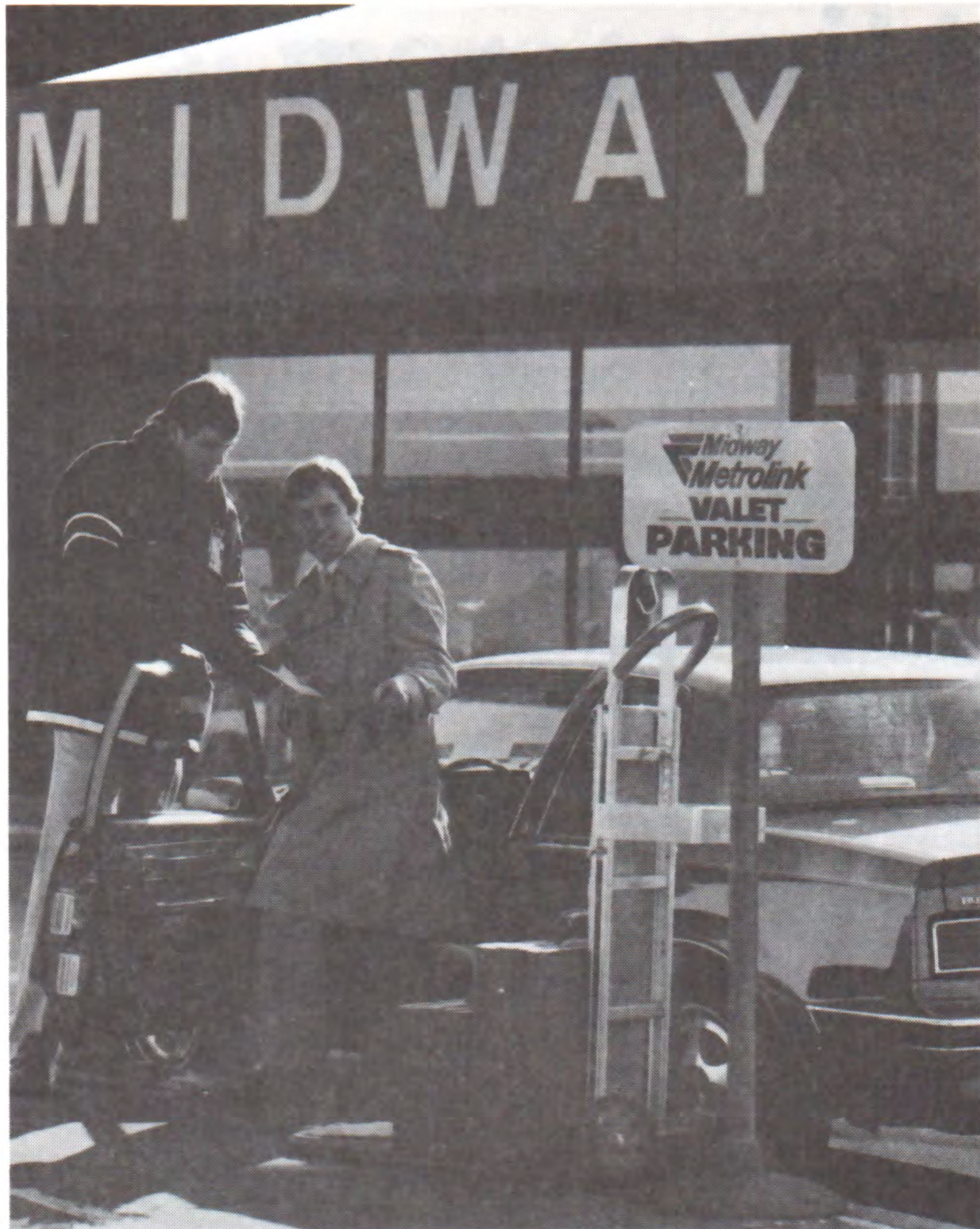


© 1985 Midway Airlines, Inc.

Now, you can enjoy MetrolinkSM and Express Service to more cities, at more convenient times.



**We'll park your car,
and have it waiting at the door
when you return.**



Everything is handled for you. Just pull up to Midway Airport—you'll find our valet parking only a few feet from the door—and we'll help you with your luggage, park your car in a fenced lot with 24-hour security, and have your car waiting at the door on your return. The cost: \$10.00 the first day and \$8.00 every day thereafter.

That's first-class valet parking service at Midway Airport. That's the way Midway Airlines® does everything.



EFFECTIVE JUNE 1, 1985

KANSAS CITY (Cont'd)

Leave	Arrive	Freq.	Flight Number	Via/ Stops	Meals	Remarks	Leave	Arrive	Freq.	Flight Number	Via/ Stops	Meals	Remarks
To Philadelphia							From Philadelphia						
10 20a	3 00p		154/344	MDW	L		7 10a	10 00a	X7	375/157	MDW	B	
2 20p	7 15p	X6	122/172	MDW	D		11 30a	2 00p	X7	177/129	MDW	L	
5 35p	9 55p	X6	152/378	MDW	S		11 30a	2 00p	7	377/129	MDW	L	
							5 30p	8 30p	X6	379/151	MDW	D	
To Tampa							From Tampa						
7 10a	12 25p	X7	138/503	MDW	S		10 15a	2 00p		544/129	MDW	S	
							12 50p	8 30p	X6	510/151	MDW	S	
To Washington, DC National Airport							From Washington, DC National Airport						
10 20a	2 20p		154/156	MDW	L		7 35a	10 00a	X7	157	1	B	
3 50p	7 59p	X6	150	1	D		11 25a	2 00p		129	1	L	
5 35p	9 50p	X6	152	1	S		2 40p	5 15p		153	1	S	
							5 45p	8 30p	X6	151	1	D	
To West Palm Beach							From West Palm Beach						
7 10a	1 40p	X7	138/503	MDW	S		2 10p	8 30p	X6	510/151	MDW	S	
To White Plains							From White Plains						
10 20a	5 05p	X6	154/142	MDW	L		8 25a	2 00p	X7	183/129	MDW	L	

MIAMI

Reservations and Information 1-800-621-5700

To Chicago Midway Airport							From Chicago Midway Airport						
9 05a	11 45a		544	1	S		8 30a	12 25p		511	0	S	
12 15p	3 05p		542	1	S		5 25p	9 25p		549	0	S	
8 10p	10 10p		516	0	S		7 10p	11 50p		519	1	S	
To Cincinnati							From Cincinnati						
9 05a	3 15p		544/566	TPA	S		8 00a	12 25p		511	1	S	
12 15p	6 20p		542/567	MDW	S		4 15p	9 25p		566/549	MDW	S	
							6 40p	11 50p	X6	519	2	S	
To Cleveland							From Cleveland						
9 05a	2 05p		544/330	MDW	S		8 00a	12 25p	X7	333/511	MDW	S	
12 15p	5 55p	X6	542/336	MDW	S		3 20p	9 25p		331/549	MDW	S	
							5 05p	9 25p	X6	141/549	MDW	S	
							6 45p	11 50p	X6	337/519	MDW	S	
To Detroit							From Detroit						
9 05a	1 50p		544/318	MDW	S		8 00a	12 25p	X7	301/511	MDW	S	
12 15p	5 50p	X6	542/122	MDW	S		3 30p	9 25p		305/549	MDW	S	
							5 10p	9 25p	X6	307/549	MDW	S	
							6 10p	11 50p	X6	121/519	MDW	S	
To Ft. Lauderdale							From Ft. Lauderdale						
12 15p	12 40p		542	0			11 25p	11 50p		519	0		
To Kansas City							From Kansas City						
9 05a	2 00p		544/129	MDW	S		3 50p	9 25p		150/549	MDW	S	
12 15p	5 15p		542/153	MDW	S		5 35p	11 50p	X6	152/519	MDW	S	
To Minneapolis/St. Paul							From Minneapolis/St. Paul						
9 05a	2 05p		544/177	MDW	S		7 00a	12 25p	X7	386/511	MDW	S	
12 15p	5 10p		542/365	MDW	S		3 25p	9 25p		388/549	MDW	S	
							5 30p	11 50p	X6	378/519	MDW	S	
To Orlando							From Orlando						
9 05a	12 50p		544/566	TPA			Consult Midway Or Your Travel Agent						



FEATURING...



&



EFFECTIVE JUNE 1, 1985

ST. CROIX

Reservations and Information 1-800-621-5700

To Chicago						From Chicago					
Leave	Arrive	Freq.	Flight Number	Via/Stops	Remarks	Leave	Arrive	Freq.	Flight Number	Via/Stops	Remarks
Midway Airport						Midway Airport					
4 55p	10 10p		516	1	S	8 30a	4 30p		511	2	S
To Cincinnati Consult Midway Or Your Travel Agent						From Cincinnati 8 00a 4 30p 511 3 S					
To Cleveland Consult Midway Or Your Travel Agent						From Cleveland 8 00a 4 30p X7 333 /511 MDW S					
To Detroit Consult Midway Or Your Travel Agent						From Detroit 8 00a 4 30p X7 301 /511 MDW S					
To Miami 4 55p 7 40p 516 0 S						From Miami 1 00p 4 30p 511 1 S					
To Minneapolis/St. Paul Consult Midway Or Your Travel Agent						From Minneapolis/St. Paul 7 00a 4 30p X7 386 /511 MDW S					
To St. Thomas Consult Midway Or Your Travel Agent						From St. Thomas 4 05p 4 30p 511 0					

ST. THOMAS

Reservations and Information 1-800-621-5700

To Chicago						From Chicago					
Leave	Arrive	Freq.	Flight Number	Via/Stops	Remarks	Leave	Arrive	Freq.	Flight Number	Via/Stops	Remarks
Midway Airport						Midway Airport					
4 05p	10 10p		516	2	S	8 30a	3 35p		511	1	S
To Cincinnati Consult Midway Or Your Travel Agent						From Cincinnati 8 00a 3 35p 511 2 S					
To Cleveland Consult Midway Or Your Travel Agent						From Cleveland 8 00a 3 35p X7 333 /511 MDW S					
To Detroit Consult Midway Or Your Travel Agent						From Detroit 8 00a 3 35p X7 301 /511 MDW S					
To Miami 4 05p 7 40p 516 1 S						From Miami 1 00p 3 35p 511 0 S					
To Minneapolis/St. Paul Consult Midway Or Your Travel Agent						From Minneapolis/St. Paul 7 00a 3 35p X7 386 /511 MDW S					
To St. Croix 4 05p 4 30p 511 0						From St. Croix Consult Midway Or Your Travel Agent					

TAMPA

Reservations and Information 1-800-621-5700

To Chicago						From Chicago					
Leave	Arrive	Freq.	Flight Number	Via/Stops	Remarks	Leave	Arrive	Freq.	Flight Number	Via/Stops	Remarks
Midway Airport						Midway Airport					
10 15a	11 45a		544	0	S	8 55a	12 25p		503	0	S
12 20p	4 15p		566	2	S	9 00a	1 20p		565	1	S
12 50p	3 50p		510	1	S						
1 45p	6 15p		565/518	MCO	S						

TAMPA (Cont'd)

To Cincinnati						From Cincinnati					
Leave	Arrive	Freq.	Flight Number	Via/Stops	Remarks	Leave	Arrive	Freq.	Flight Number	Via/Stops	Remarks
Midway Airport						Midway Airport					
12 20p	3 15p		566	1	S	8 00a	12 25p		511/503	MDW	S
12 50p	6 20p		510/567	MDW	S	11 25a	1 20p		565	0	S
1 45p	9 15p	X6	565/518	MCO	S						
To Cleveland 10 15a 2 05p 544/330 MDW S 1 45p 5 10p 530 1 S						From Cleveland 8 30a 11 50a 515 1 S					
To Detroit 10 15a 1 50p 544/318 MDW S 1 45p 6 10p 530 2 S						From Detroit 7 35a 11 50a 515 2 S 8 00a 12 25p X7 301/503 MDW S					
To Kansas City 10 15a 2 00p 544/129 MDW S 12 50p 8 30p X6 510/151 MDW S						From Kansas City 7 10a 12 25p X7 138/503 MDW S					
To Miami Consult Midway Or Your Travel Agent						From Miami 9 05a 9 55a 544 0					
To Minneapolis/St. Paul 10 15a 2 05p 544/177 MDW S 12 50p 6 10p X6 510/361 MDW S						From Minneapolis/St. Paul 7 00a 12 25p X7 386/503 MDW S					
To Orlando 12 20p 12 50p 566 0 1 45p 2 15p 565 0						From Orlando 11 20a 11 50a 515 0					
To West Palm Beach 12 50p 1 40p 503 0						From West Palm Beach Consult Midway Or Your Travel Agent					

WASHINGTON, DC

National Airport

Reservations and Information 1-800-621-5700

To Chicago						From Chicago					
Leave	Arrive	Freq.	Flight Number	Via/Stops	Remarks	Leave	Arrive	Freq.	Flight Number	Via/Stops	Remarks
Midway Airport						Midway Airport					
7 35a	8 20a	X7	157	0	B	7 25a	10 00a	X7	158	0	B
9 45a	10 35a	X7	183	0	S	11 45a	2 20p		156	0	S
11 25a	12 15p		129	0	S	1 05p	3 40p	X6	142	0	L
2 40p	3 30p		153	0	S	2 45p	5 20p		120	0	S
5 45p	6 35p	X6	151	0	D	5 25p	7 59p	X6	150	0	D
6 55p	7 45p	X6	186	0	D	7 15p	9 50p	X6	152	0	S
To Dallas/Ft. Worth 7 35a 11 00a X7 157/333 MDW B 11 25a 3 10p 129/309 MDW L 2 40p 6 15p 6 153/305 MDW S 2 40p 7 40p 153/307 MDW D 5 45p 9 35p X6 151/337 MDW D						From Dallas/Ft. Worth 7 00a 2 20p X7 304/156 MDW B 9 30a 2 20p 7 318/156 MDW L 12 30p 5 20p 308/120 MDW L 4 35p 9 50p X6 332/152 MDW S					
To Kansas City 7 35a 10 00a X7 157 1 B 11 25a 2 00p 129 1 S 2 40p 5 15p 153 1 S 5 45p 8 30p X6 151 1 D						From Kansas City 10 20a 2 20p 154/156 MDW L 3 50p 7 59p X6 150 1 D 5 35p 9 50p X6 152 1 S					
To Minneapolis/St. Paul 7 35a 9 54a X7 157/375 MDW B 11 25a 2 05p 129/177 MDW S 2 40p 5 10p 153/365 MDW S 5 45p 8 10p X6 151/379 MDW D 6 55p 9 20p X6 186/389 MDW D						From Minneapolis/St. Paul 10 20a 2 20p 344/156 MDW L 12 30p 5 20p 376/120 MDW S 3 25p 7 59p X6 388/150 MDW D 5 30p 9 50p X6 378/152 MDW S					



FEATURING...

WASHINGTON, DC (Cont'd)

Leave	Arrive	Freq.	Flight Number	Via/ Stops	Meals	Remarks	Leave	Arrive	Freq.	Flight Number	Via/ Stops	Meals	Remarks
To New York/White Plains Airports: L-LaGuardia W-White Plains							From New York/White Plains Airports: L-LaGuardia W-White Plains						
7 10a	8 10a	WX7	189	0	S		8 25a	9 25a	X7	183	0	S	
4 05p	5 05p	WX6	142	0	S/		5 35p	6 35p	X6	186	0	S/	
To White Plains							From White Plains						
7 10a	8 10a	X7	189	0	S		8 25a	9 25a	X7	183	0	S	
4 05p	5 05p	X6	142	0	S/		5 35p	6 35p	X6	186	0	S/	

WEST PALM BEACH

Reservations and Information 1-800-621-5700

To Chicago Midway Airport							From Chicago Midway Airport						
2 10p	3 50p		510	0	S		8 55a	1 40p		503	1	S	
To Cincinnati							From Cincinnati						
2 10p	6 20p		510/567	MDW	S		8 00a	1 40p		511/503	MDW	S	
To Cleveland							From Cleveland						
2 10p	9 05p	X6	510/332	MDW	S		8 30a	1 40p		515/503	TPA	S	
To Detroit							From Detroit						
2 10p	6 50p	X6	510/310	MDW	S		7 35a	1 40p		515/503	TPA	S	
To Kansas City							From Kansas City						
2 10p	8 30p	X6	510/151	MDW	S		7 10a	1 40p	X7	138/503	MDW	S	
To Minneapolis/St. Paul							From Minneapolis/St. Paul						
2 10p	6 10p	X6	510/361	MDW	S		7 00a	1 40p	X7	386/503	MDW	S	
To Orlando Consult Midway Or Your Travel Agent							From Orlando						
							11 20a	1 40p		515/503	TPA		
To Tampa Consult Midway Or Your Travel Agent							From Tampa						
							12 50p	1 40p		503		0	

WHITE PLAINS

Reservations and Information 1-800-621-5700

To Chicago Midway Airport							From Chicago Midway Airport						
8 25a	10 35a	X7	183	1	S		1 05p	5 05p	X6	142	1	L	
5 35p	7 45p	X6	186	1	D								
To Dallas/Ft. Worth							From Dallas/Ft. Worth						
8 25a	3 10p	X7	183/309	MDW	L		9 30a	5 05p	7	318/142	MDW	L	
To Kansas City							From Kansas City						
8 25a	2 00p	X7	183/129	MDW	L		10 20a	5 05p	X6	154/142	MDW	L	
To Minneapolis/St. Paul							From Minneapolis/St. Paul						
8 25a	2 05p	X7	183/177	MDW	S		10 20a	5 05p	X6	344/142	MDW	L	
5 35p	9 20p	X6	186/389	MDW	D								
To Washington, DC National Airport							From Washington, DC National Airport						
8 25a	9 25a	X7	183	0	S		7 10a	8 10a	X7	189	0	S	
5 35p	6 35p	X6	186	0	S/		4 05p	5 05p	X6	142	0	S/	

MIDWAY AIRLINES GENERAL INFORMATION

Information below is excerpted from rules applicable to transportation provided by Midway Airlines. The full text of Midway's Contract of Carriage may be inspected at any of Midway's airport and city ticket offices. You may also receive free of charge, the full text of Midway's Contract of Carriage by writing to Midway Airlines, Office of Consumer Affairs, 5700 South Cicero, Chicago, IL 60638.

AIRCRAFT — Midway Metrolink's jet fleet features the DC9-10, accommodating 65 passengers, and DC9-30, accommodating 94 passengers, both offering MetroClub and MetroClass seating. Midway Express' jet fleet operates with Boeing 737 equipment accommodating 128 passengers.

BAGGAGE — Checked baggage should be locked. Regulations require name identification on outside. Name labels are available at Midway ticket counters. Do not place money, jewelry, medication or prescriptions or other expensive personal items in baggage which is to be checked. These items should be carried personally by you, as Midway accepts no responsibility or liability for these items in case of loss or delay.

Articles that are unsuitably packaged, fragile and/or perishables are accepted as checked baggage only at the passenger's own risk. Checked baggage is subject to inspection and passengers may be required to present identification.

Free baggage allowance — For each ticketed passenger, Midway allows three free checked pieces. For size limitations contact Midway Reservations. Excess baggage — extra charges apply to additional and oversized pieces and rates are higher for transportation to/from the Virgin Islands. Certain items, such as skis and golf clubs, will be accepted as one item under your free baggage allowance. Check with Midway Reservations for additional information.

Carry-on baggage — Federal Aviation Administration safety regulations require that all baggage that cannot be stowed under a seat or in an approved overhead compartment must be checked.

Midway Airlines' liability for lost, damaged or delayed in delivery of personal baggage is limited to \$1,250 per fare-paying passenger. Excess valuation may be purchased for \$1.00 additional \$100 valuation at check-in time. Midway accepts no responsibility or liability for loss of jewelry, currency, negotiable or other instruments and securities, business documents and other similar valuable or irreplaceable articles included in checked baggage, with or without the knowledge of Midway.

Claim — Damaged or lost baggage must be reported, in person, within four hours of passenger's arrival at destination.

Animals — Midway Airlines accepts domestic dogs and cats as excess baggage provided passengers furnish their own air-worthy kennels. Pet must accompany passenger on the same flight and will be checked and carried in a pressurized, air-conditioned baggage compartment. There will be a charge of \$21.00.

CHILDREN — One child under two (2) years of age, not occupying a seat, will be carried free with a passenger paying the applicable adult fare.

CREDIT CARDS — Midway Airlines will accept American Express, Master Charge, Bank Americard/VISA, Carte Blanche, Diners Club and Air Travel Cards.

HAZARDOUS MATERIALS — Federal regulations restrict carriage on aircraft of items classified as hazardous materials. These materials include, but are not limited to, flammable gases—liquid and solid, non-flammable compressed gas, explosives, poison, corrosives, oxidizing agents, radioactive material, etiologic agents, and magnetized materials.

NO SMOKING — Sections are provided on all Midway aircraft for non-smokers. Generally, the forward portion of each section is reserved for non-smokers. Signs are posted in the cabin designating the no smoking sections.

ON-BOARD SERVICE — Both Midway Metrolink and Midway Express serve complimentary coffee and soft drinks on all flights. Beer and wine may be purchased for \$1.00 and cocktails for \$2.00. Metrolink's MetroClub seating includes complimentary beverages.

PASSENGER CHECK-IN PROCEDURE — Midway Airlines requests that passengers purchase their tickets and have them validated/confirmed at the ticket counter. Reservation of passengers presenting themselves at the Midway Airlines boarding gate less than ten minutes before scheduled departure of a domestic and less than 30 minutes for international flights will be subject to cancellation. Passengers with pre-assigned seats must present themselves at the departure gate at least 15 minutes before scheduled departure time; otherwise, those seats are subject to reassignment to other passengers. Passengers traveling from the U. S. Virgin Islands must check-in for their flight one hour and 30 minutes before scheduled departure to allow ample time for customs and immigration clearance.

REFUNDS — LOST TICKETS — When a passenger loses his ticket, or a portion of his ticket, he will be required to purchase another ticket at the appropriate fare before transportation will be furnished between the points covered by the lost ticket. Requests for refunds of lost tickets must be made in writing to Revenue Accounting, Midway Airlines, 5700 South Cicero, Chicago, IL 60638. There will be a 120 day processing period and a surcharge of \$20.00. Additional restrictions apply. Forms available at Midway's airport ticket counters.

SCHEDULES AND OPERATIONS — Midway undertakes to use its best efforts to transport the passenger and baggage with reasonable dispatch. Times shown in timetables or elsewhere are not guaranteed, and form no part of the Contract of Carriage. Midway may, without notice, substitute alternate carriers or aircraft, and may alter or omit stopping places shown on the ticket in case of necessity. Schedules are subject to change without notice. Midway is not responsible or liable for making connections, or for failing to operate any flight according to schedule, or for changing the schedule of any flight. Certain flights will not operate during holiday periods. Contact Midway Airlines for details.

SECURITY — For your security, all passengers and their hand-carried items must be inspected in accordance with the government-sponsored security program. Passengers should proceed through security inspection at least 20 minutes prior to departure time, for domestic flights.