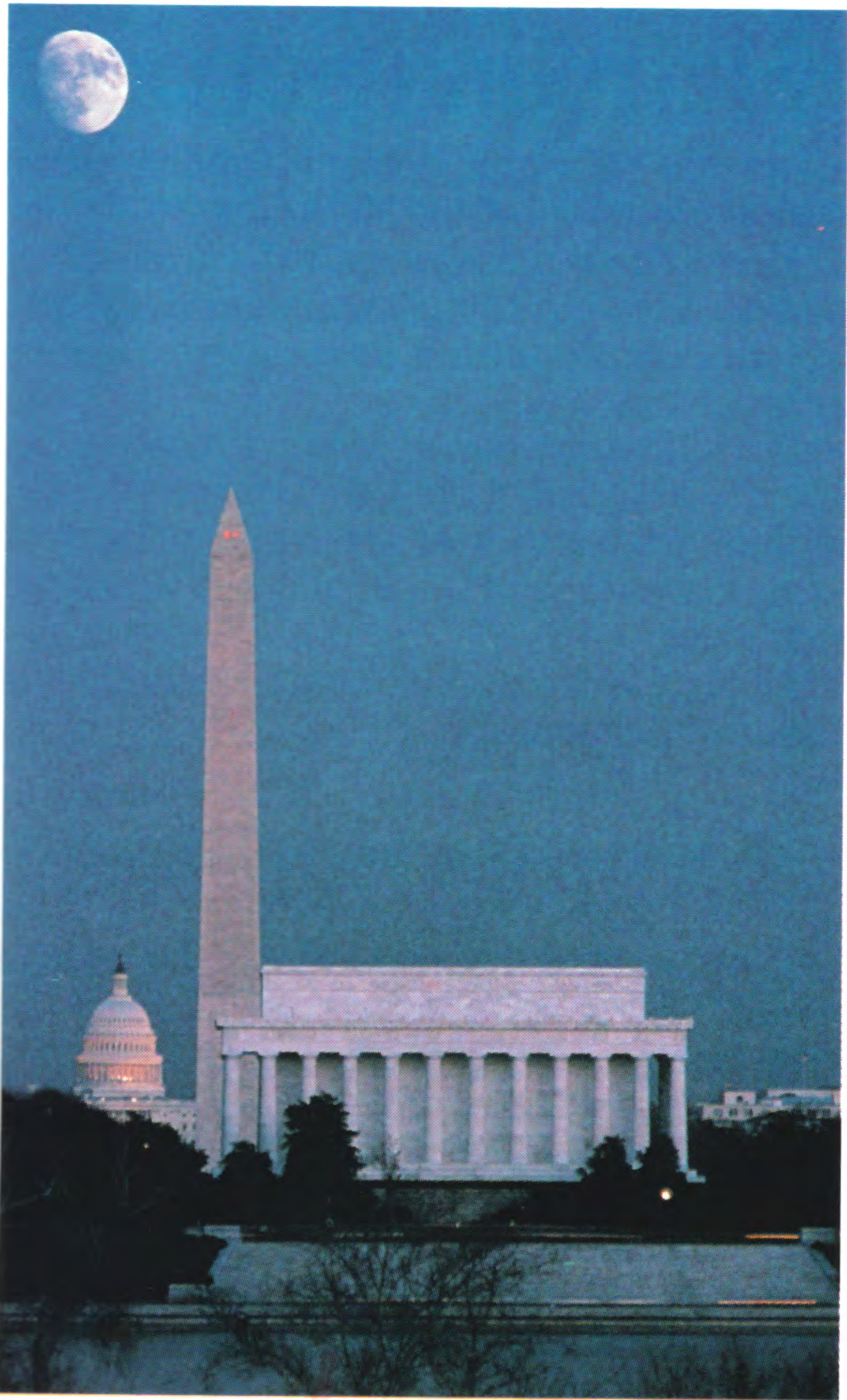


# **Midway Airlines<sup>®</sup>**

**TIMETABLE**  
**EFFECTIVE JULY 1, 1985**



## **MIDWAY METROLINK<sup>®</sup>**

SERVING: Boston, Chicago, Cleveland, Dallas/Ft. Worth, Detroit, Kansas City, Minneapolis/St. Paul, New York (LaGuardia, White Plains), Philadelphia, and Washington, D.C. (National).

## **MIDWAY EXPRESS<sup>SM</sup>**

SERVING: Chicago, Cincinnati, Cleveland, Detroit, Ft. Lauderdale, Miami, Orlando, St. Croix, V.I., St. Thomas, V.I., Tampa, and West Palm Beach.

# MIDWAY AIRLINES<sup>®</sup>

## SMALL PACKAGE SERVICE

### The Sure Way To Same Day Delivery

Now, Midway Metrolink<sup>®</sup> and Midway Express<sup>SM</sup> combine to add more destinations to our already proven airport to airport service. Midway specializes in **Small Package Service**; that's why your shipment gets top priority.

Just drop off your package, up to 70 pounds, at our airport ticket counter 30 minutes prior to departure, and you're assured that your package will be on the next flight.

Rely on the service and count on the economy. The price is a low \$25.00 up to 50 lbs. And only \$35.00 from 51 lbs. to 70 lbs.

Next time, try Midway's **Small Package Service**, the sure way to same day delivery. For information or a credit application call 1-800-621-5757.



Maximum value per pkg. is \$500.  
No hazardous/perishable materials will be accepted.

© 1985 Midway Airlines, Inc.



**TIMETABLE**  
EFFECTIVE JULY 1, 1985



### MIDWAY METROLINK<sup>®</sup>

SERVING: Boston, Chicago, Cleveland, Dallas/Ft. Worth, Detroit, Kansas City, Minneapolis/St. Paul, New York (LaGuardia, White Plains), Philadelphia, and Washington, D.C. (National).

### MIDWAY EXPRESS<sup>SM</sup>

SERVING: Chicago, Cincinnati, Cleveland, Detroit, Ft. Lauderdale, Miami, Orlando, St. Croix, V.I., St. Thomas, V.I., Tampa, and West Palm Beach.

# Midway Airlines<sup>®</sup> now offers two great services.

## Metrolink<sup>SM</sup> Service.

You can now enjoy our popular Metrolink<sup>SM</sup> service two ways: MetroClub<sup>SM</sup> and MetroClass<sup>SM</sup>.

MetroClub is the businessman's favorite with two-abreast seating, complimentary cocktails and select wines, and our fresh, light cuisine. All at less than coach fares!

MetroClass is a new approach to coach that delivers seating with more leg room and a host of fine Metrolink features. All at fares better than you'll find most anywhere in the air and without all the restrictions!

All Midway Metrolink<sup>®</sup> flights in this schedule are printed in burgundy.

## Express Service.

Featuring low fares that make places you thought you could only dream about come true. Great vacation destinations like Walt Disney World in Orlando, or the beaches of West Palm Beach and Fort Lauderdale. Or great shopping destinations like St. Thomas and St. Croix in the Virgin Islands. Midway Express<sup>SM</sup> makes flying to the sun more fun.

All Midway Express flights in this schedule are printed in black.

PUT YOURSELF FIRST

**Midway Airlines<sup>®</sup>**  
The best value in the air.

**Midway  
Metrolink<sup>™</sup>**

&

**Midway Express**

### BOSTON

Reservations and Information 1-800-621-5700

Leave	Arrive	Freq.	Flight Number	Via/ Stops	Meals	Remarks	Leave	Arrive	Freq.	Flight Number	Via/ Stops	Meals	Remarks
<b>To Chicago</b> Midway Airport							<b>From Chicago</b> Midway Airport						
7 40a	9 55a	X7	339	1	B		7 05a	10 56a	X7	334	1	S	
1 10p	3 25p		331	1	S		12 05p	3 56p		330	1	S	
4 35p	6 50p	X6	337	1	D		3 55p	7 46p	X6	336	1	D	
<b>To Cleveland</b>							<b>From Cleveland</b>						
7 40a	9 30a	X7	339	0	B		9 25a	10 56a	X7	334	0	S	
1 10p	3 00p		331	0	S		2 25p	3 56p		330	0	S	
4 35p	6 25p	X6	337	0	D		6 15p	7 46p	X6	336	0	D	
<b>To Dallas/Ft. Worth</b>							<b>From Dallas/Ft. Worth</b>						
7 40a	3 10p	X7	339/309	MDW	L		7 00a	3 56p	X7	304/330	MDW	B	
1 10p	6 15p	6	331/305	MDW	S		9 30a	3 56p	7	318/330	MDW	S	
1 10p	7 40p		331/307	MDW	D		12 30p	7 46p	X6	308/336	MDW	D	
4 35p	9 35p	X6	337	2	D								
<b>To Detroit</b>							<b>From Detroit</b>						
1 10p	5 05p		331/530	CLE	S		11 55a	3 56p		515/330	CLE	S	
<b>To Kansas City</b>							<b>From Kansas City</b>						
7 40a	2 00p	X7	339/129	MDW	B		10 20a	3 56p		154/330	MDW	S	
1 10p	5 15p		331/153	MDW	S		2 20p	7 46p	X6	122/336	MDW	D	
4 35p	8 30p	X6	337/151	MDW	D								
<b>To Minneapolis/St. Paul</b>							<b>From Minneapolis/St. Paul</b>						
7 40a	11 30a	X7	339/397	MDW	B		10 20a	3 56p		344/330	MDW	S	
1 10p	5 10p		331/365	MDW	S		2 25p	7 46p	X6	172/336	MDW	D	
4 35p	9 20p	X6	337/389	MDW	D								

### CHICAGO

Midway Airport

Reservations and Information (312) 767-3400 or 1-800-621-5700

Leave	Arrive	Freq.	Flight Number	Via/ Stops	Meals	Remarks	Leave	Arrive	Freq.	Flight Number	Via/ Stops	Meals	Remarks
<b>To Boston</b>							<b>From Boston</b>						
7 05a	10 56a	X7	334	1	S		7 40a	9 55a	X7	339	1	B	
12 05p	3 56p		330	1	S		1 10p	3 25p		331	1	S	
3 55p	7 46p	X6	336	1	D		4 35p	6 50p	X6	337	1	D	
<b>To Cincinnati</b>							<b>From Cincinnati</b>						
8 15a	10 15a		565	0			8 00a	8 00a		511	0		
7 15p	9 15p		512	0			6 45p	6 45p		520	0		
<b>To Cleveland</b>							<b>From Cleveland</b>						
7 05a	9 05a	X7	334	0	S		8 00a	8 05a	X7	333	0	S	
9 05a	11 05a	X7	138	0	S/		9 50a	9 55a	X7	339	0	S/	
12 05p	2 05p		330	0	S		12 20p	12 25p		135	0	S	
2 45p	4 45p		140	0	S/		3 20p	3 25p		331	0	S/	
3 55p	5 55p	X6	336	0	S/		5 05p	5 10p	X6	141	0	S	
7 05p	9 05p	X6	332	0	S/		6 45p	6 50p	X6	337	0	S	
<b>To Dallas/Ft. Worth</b>							<b>From Dallas/Ft. Worth</b>						
8 45a	11 00a		333	0	B		7 00a	9 00a	X7	304	0	B	
12 55p	3 10p		309	0	L		9 30a	11 30a	7	318	0	S	
4 00p	6 15p	6	305	0	S		12 30p	2 30p		308	0	L	
5 25p	7 40p		307	0	D		4 35p	6 35p		332	0	D	
7 20p	9 35p	X6	337	0	S		6 35p	8 35p	6	350	0	D	
							7 59p	9 59p	X6	316	0	S	

X-Except 2-Tuesday 4-Thursday 6-Saturday E-Effective  
1-Monday 3-Wednesday 5-Friday 7-Sunday D-Discontinued  
MetroClub Meal/MetroClass Meal S-Snack B-Breakfast L-Lunch D-Dinner  
Contact Midway Airlines or Your Travel Agent for Details.



FEATURING...



EFFECTIVE JULY 1, 1985

## CHICAGO (Cont'd)

Leave	Arrive	Freq.	Flight Number	Via/ Stops	Meals	Remarks	Leave	Arrive	Freq.	Flight Number	Via/ Stops	Meals	Remarks
<b>To Detroit</b>							<b>From Detroit</b>						
7 00a	8 50a	X7	302	0	S		8 00a	7 55a	X7	301	0	S	
9 30a	11 20a	X7	304	0	S/		9 10a	9 00a	X7	303	0	S/	
12 00n	1 50p		318	0	S		12 30p	12 25p		309	0	S	
1 00p	2 50p		306	0	S/		2 30p	2 25p		317	0	S/	
3 00p	4 50p		308	0	S/		3 30p	3 20p		305	0	S/	
4 00p	5 50p	X6	122	0	S/		5 10p	5 00p	X6	307	0	S	
5 00p	6 50p	X6	310	0	S		6 10p	6 05p	X6	121	0	S	
7 30p	9 20p	X6	312	0	S/		7 10p	7 00p	X6	311	0	S/	
<b>To Ft. Lauderdale</b>							<b>From Ft. Lauderdale</b>						
6 10p	10 05p		519	0	S		9 15a	11 10a		542	0	S	
<b>To Kansas City</b>							<b>From Kansas City</b>						
8 45a	10 00a	X7	157	0	S		7 10a	8 20a	X7	138	0	S	
12 45p	2 00p		129	0	S		10 20a	11 30a		154	0	S/	
2 15p	3 30p		181	0	S/		2 20p	3 30p		122	0	S/	
4 00p	5 15p		153	0	S/		3 50p	5 00p		150	0	S/	
7 15p	8 30p	X6	151	0	S/		5 35p	6 45p	X6	152	0	S	
<b>To Miami</b>							<b>From Miami</b>						
8 30a	12 25p		511	0	S		7 30a	10 10a		544	1	S	
3 00p	9 20p		308/509	DTW	S		8 30a	11 10a		542	1	S	
6 10p	10 40p		519	1	S		8 10p	10 10p		516	0	S	
6 25p	11 00p		523	1	S								
<b>To Minneapolis/St. Paul</b>							<b>From Minneapolis/St. Paul</b>						
7 00a	8 08a	X7	347	0	S		7 00a	8 08a	X7	386	0	S	
8 45a	9 54a	X7	375	0	S		8 35a	9 43a	X7	348	0	S	
10 20a	11 30a		397	0	S/		10 20a	11 28a		344	0	S/	
12 55p	2 05p		177	0	S		12 30p	1 38p		376	0	S	
1 55p	3 05p		371	0	S/		2 25p	3 33p		172	0	S/	
4 00p	5 10p		365	0	S/		3 25p	4 33p		388	0	S/	
5 00p	6 10p	X6	361	0	S		5 30p	6 38p	X6	378	0	S	
7 00p	8 10p	X6	379	0	S/		6 30p	7 38p	X6	364	0	S	
8 10p	9 20p	X6	389	0	S/		8 30p	9 38p	X6	360	0	S/	
<b>To New York/White Plains</b>							<b>From New York/White Plains</b>						
Airports: L-LaGuardia W-White Plains							Airports: L-LaGuardia W-White Plains						
7 00a	10 00a	L X67	384	0	B		7 20a	8 30a	X67	185	0	B	
8 00a	10 55a	L X67	192	0	B		8 25a	W10 35a	X7	183	1	S	
8 00a	10 55a	L 6	392	0	B		8 30a	L 9 40a	X7	397	0	B	
9 00a	12 00n	L	386	0	B		10 30a	L 11 35a	6	187	0	S	
12 00n	3 00p	L	390	0	L		10 30a	L 11 35a	X6	387	0	S	
1 05p	5 05p	W X6	142	1	L		11 30a	L 12 30p	X67	193	0	L	
3 00p	6 00p	L	382	0	S		11 30a	L 12 30p	67	393	0	L	
5 00p	8 00p	L	388	0	D		2 30p	L 3 35p		365	0	S	
6 00p	8 55p	L X6	396	0	D		4 00p	L 5 10p		391	0	S	
7 00p	9 55p	L X6	180	0	D		5 35p	W 7 45p	X6	186	1	D	
							6 30p	L 7 40p	X6	389	0	D	
							8 30p	L 9 40p	X6	399	0	S	
<b>To Orlando</b>							<b>From Orlando</b>						
8 15a	1 20p		565	2	S		9 00a	12 25p		506/309	DTW	S	
9 30a	3 10p	X7	304/515	DTW	S		1 50p	5 10p	X6	530/141	CLE	S	
12 10p	3 40p		545	0	S		3 35p	6 45p		520	2	S	
3 00p	8 15p		308/509	DTW	S		4 10p	5 40p		518	0	S	
<b>To Philadelphia</b>							<b>From Philadelphia</b>						
7 05a	9 50a	X7	174	0	B		7 10a	8 08a	X7	375	0	B	
12 15p	3 00p		344	0	L		11 30a	12 28p	X7	177	0	L	
2 10p	4 55p		376	0	S		11 30a	12 28p	7	377	0	L	
4 30p	7 15p	X6	172	0	D		3 30p	4 28p		361	0	S	
7 10p	9 55p	X6	378	0	S		5 30p	6 28p	X6	379	0	D	
							7 40p	8 38p	X6	173	0	S	
<b>To St. Croix</b>							<b>From St. Croix</b>						
8 30a	4 30p		511	2	S		4 55p	10 10p		516	1	S	

## CHICAGO (Cont'd)

Leave	Arrive	Freq.	Flight Number	Via/ Stops	Meals	Remarks	Leave	Arrive	Freq.	Flight Number	Via/ Stops	Meals	Remarks
<b>To St. Thomas</b>							<b>From St. Thomas</b>						
8 30a	3 35p		511	1	S		4 05p	10 10p		516	2	S	
<b>To Tampa</b>							<b>From Tampa</b>						
8 15a	12 30p		565	1	S		8 40a	10 10a		544	0	S	
10 40a	2 10p		503	0	S		12 50p	5 10p	X6	530/141	CLE	S	
6 25p	9 55p		523	0	S		2 35p	5 40p		510	1	S	
							4 30p	6 45p		520	1	S	
<b>To Washington, DC</b>							<b>From Washington, DC</b>						
National Airport							National Airport						
7 25a	10 00a	X7	158	0	B		7 35a	8 20a	X7	157	0	B	
11 45a	2 20p		156	0	L		9 45a	10 35a	X7	183	0	S	
1 05p	3 40p	X6	142	0	L		11 25a	12 15p		129	0	L	
2 45p	5 20p		120	0	S		2 40p	3 30p		153	0	S	
5 25p	7 59p	X6	150	0	D		5 45p	6 35p	X6	151	0	D	
7 15p	9 50p	X6	152	0	S		6 55p	7 45p	X6	186	0	D	
<b>To West Palm Beach</b>							<b>From West Palm Beach</b>						
10 40a	3 25p		503	1	S		3 55p	5 40p		510	0	S	
<b>To White Plains</b>							<b>From White Plains</b>						
1 05p	5 05p	X6	142	1	L		8 25a	10 35a	X7	183	1	S	
							5 35p	7 45p	X6	186	1	D	

## CINCINNATI

Reservations and Information 1-800-621-5700

<b>To Chicago</b>							<b>From Chicago</b>						
Midway Airport							Midway Airport						
8 00a	8 00a		511	0			8 15a	10 15a		565	0		
6 45p	6 45p		520	0			7 15p	9 15p		512	0		
<b>To Dallas/Ft. Worth</b>							<b>From Dallas/Ft. Worth</b>						
8 00a	11 00a		511/333	MDW	B		4 35p	9 15p		332/512	MDW	D	
6 45p	9 35p	X6	520/337	MDW	D								
<b>To Kansas City</b>							<b>From Kansas City</b>						
8 00a	10 00a	X7	511/157	MDW	S		3 50p	9 15p		150/512	MDW	S/	
6 45p	8 30p	X6	520/151	MDW	D		5 35p	9 15p	X6	152/512	MDW	S	
<b>To Miami</b>							<b>From Miami</b>						
8 00a	12 25p		511	1	S		Consult Midway Or Your Travel Agent						
<b>To Minneapolis/St. Paul</b>							<b>From Minneapolis/St. Paul</b>						
8 00a	9 54a	X7	511/375	MDW	S		3 25p	9 15p		388/512	MDW		
8 00a	11 30a		511/397	MDW	S/		5 30p	9 15p	X6	378/512	MDW	S	
6 45p	8 10p	X6	520/379	MDW									
<b>To Orlando</b>							<b>From Orlando</b>						
10 35a	1 20p		565	1	S		3 35p	6 25p		520	1	S	
							4 10p	9 15p		518/512	MDW	S	
<b>To St. Croix</b>							<b>From St. Croix</b>						
8 00a	4 30p		511	3	S		Consult Midway Or Your Travel Agent						
<b>To St. Thomas</b>							<b>From St. Thomas</b>						
8 00a	3 35p		511	2	S		Consult Midway Or Your Travel Agent						
<b>To Tampa</b>							<b>From Tampa</b>						
10 35a	12 30p		565	0	S		4 30p	6 25p		520	0	S	
<b>To West Palm Beach</b>							<b>From West Palm Beach</b>						
10 35a	3 25p		565/503	TPA	S		3 55p	9 15p		510/512	MDW	S	

## CLEVELAND

Reservations and Information 1-800-621-5700

<b>To Boston</b> 9 25a 10 56a X7 334 0 S 2 25p 3 56p 330 0 S 6 15p 7 46p X6 336 0 D	<b>From Boston</b> 7 40a 9 30a X7 339 0 B 1 10p 3 00p 331 0 S 4 35p 6 25p X6 337 0 D
<b>To Chicago</b> Midway Airport 8 00a 8 05a X7 333 0 S 9 50a 9 55a X7 339 0 S/ 12 20p 12 25p 135 0 S 3 20p 3 25p 331 0 S/ 5 05p 5 10p X6 141 0 S 6 45p 6 50p X6 337 0 S	<b>From Chicago</b> Midway Airport 7 05a 9 05a X7 334 0 S 9 05a 11 05a X7 138 0 S/ 12 05p 2 05p 330 0 S 2 45p 4 45p 140 0 S/ 3 55p 5 55p X6 336 0 S/ 7 05p 9 05p X6 332 0 S/
<b>To Dallas/Ft. Worth</b> 8 00a 11 00a X7 333 1 B 12 20p 3 10p 135/309 MDW L 3 20p 6 15p 6 331/305 MDW S 5 05p 7 40p X6 141/307 MDW D 6 45p 9 35p X6 337 1 S	<b>From Dallas/Ft. Worth</b> 7 00a 2 05p X7 304/330 MDW B 9 30a 2 05p 7 318/330 MDW S 12 30p 4 45p 308/140 MDW L 4 35p 9 05p X6 332 1 D
<b>To Detroit</b> 4 30p 5 05p 530 0	<b>From Detroit</b> 11 55a 12 30p 506 0
<b>To Ft. Lauderdale</b> 3 20p 10 05p 331/519 MDW S 5 05p 10 05p X6 141/519 MDW S	<b>From Ft. Lauderdale</b> 9 15a 2 05p 542/330 MDW S
<b>To Kansas City</b> 8 00a 10 00a X7 333/157 MDW S 12 20p 2 00p 135/129 MDW S 3 20p 5 15p 331/153 MDW S/ 6 45p 8 30p X6 337/151 MDW S	<b>From Kansas City</b> 7 10a 11 05a X7 138 1 S 10 20a 2 05p 154/330 MDW S 2 20p 5 55p X6 122/336 MDW S/ 5 35p 9 05p X6 152/332 MDW S
<b>To Miami</b> 8 00a 12 25p X7 333/511 MDW S 4 30p 9 20p 509 2 S 5 05p 10 40p X6 141/519 MDW S	<b>From Miami</b> 7 50a 12 30p 506 2 S 8 30a 2 05p 542/330 MDW S
<b>To Minneapolis/St. Paul</b> 8 00a 9 54a X7 333/375 MDW S 9 50a 11 30a X7 339/397 MDW S/ 12 20p 2 05p 135/177 MDW S 3 20p 5 10p 331/365 MDW S/ 5 05p 8 10p X6 141/379 MDW S 6 45p 9 20p X6 337/389 MDW S/	<b>From Minneapolis/St. Paul</b> 7 00a 11 05a X7 386/138 MDW S 10 20a 2 05p 344/330 MDW S 12 30p 4 45p 376/140 MDW S 2 25p 5 55p X6 172/336 MDW S/ 5 30p 9 05p X6 378/332 MDW S
<b>To Orlando</b> 12 50p 3 10p 515 0 S 4 30p 8 15p 509 1 S	<b>From Orlando</b> 9 00a 12 30p 506 1 S 1 50p 4 10p 530 0 S 4 10p 9 05p X6 518/332 MDW S
<b>To St. Croix</b> 8 00a 4 30p X7 333/511 MDW S	<b>From St. Croix</b> Consult Midway Or Your Travel Agent
<b>To St. Thomas</b> 8 00a 3 35p X7 333/511 MDW S	<b>From St. Thomas</b> Consult Midway Or Your Travel Agent
<b>To Tampa</b> 9 50a 2 10p X7 339/503 MDW S 12 50p 4 05p 515 1 S 3 20p 9 55p 331/523 MDW S 5 05p 9 55p X6 141/523 MDW S	<b>From Tampa</b> 8 40a 2 05p 544/330 MDW S 12 50p 4 10p 530 1 S 4 30p 9 05p X6 520/332 MDW S
<b>To West Palm Beach</b> 9 50a 3 25p X7 339/503 MDW S	<b>From West Palm Beach</b> 3 55p 9 05p X6 510/332 MDW S

## DALLAS/FT. WORTH

Reservations and Information 1-800-621-5700

<b>To Boston</b> 7 00a 3 56p X7 304/330 MDW B 9 30a 3 56p 7 318/330 MDW S 12 30p 7 46p X6 308/336 MDW L	<b>From Boston</b> 7 40a 3 10p X7 339/309 MDW B 1 10p 6 15p 6 331/305 MDW S 1 10p 7 40p 331/307 MDW D 4 35p 9 35p X6 337 2 D
<b>To Chicago</b> Midway Airport 7 00a 9 00a X7 304 0 B 9 30a 11 30a 7 318 0 S 12 30p 2 30p 308 0 L 4 35p 6 35p 332 0 D 6 35p 8 35p 6 350 0 D 7 59p 9 59p X6 316 0 S	<b>From Chicago</b> Midway Airport 8 45a 11 00a 333 0 B 12 55p 3 10p 309 0 L 4 00p 6 15p 6 305 0 S 5 25p 7 40p 307 0 D 7 20p 9 35p X6 337 0 S
<b>To Cincinnati</b> 4 35p 9 15p 332/512 MDW D	<b>From Cincinnati</b> 8 00a 11 00a 511/333 MDW B 6 45p 9 35p X6 520/337 MDW S
<b>To Cleveland</b> 7 00a 2 05p X7 304/330 MDW B 9 30a 2 05p 7 318/330 MDW S 12 30p 4 45p 308/140 MDW L 4 35p 9 05p X6 332 1 D	<b>From Cleveland</b> 8 00a 11 00a X7 333 1 B 12 20p 3 10p 135/309 MDW L 3 20p 6 15p 6 331/305 MDW S 5 05p 7 40p X6 141/307 MDW D 6 45p 9 35p X6 337 1 S
<b>To Detroit</b> 7 00a 11 20a X7 304 1 B 9 30a 1 50p 7 318 1 S 12 30p 4 50p 308 1 L 4 35p 9 20p X6 332/312 MDW D	<b>From Detroit</b> 8 00a 11 00a X7 301/333 MDW B 12 30p 3 10p 309 1 L 3 30p 6 15p 6 305 1 S 5 10p 7 40p X6 307 1 D 7 10p 9 35p X6 311/337 MDW S
<b>To Kansas City</b> 7 00a 2 00p X7 304/129 MDW B 9 30a 2 00p 7 318/129 MDW S 12 30p 5 15p 308/153 MDW L 4 35p 8 30p X6 332/151 MDW D	<b>From Kansas City</b> 7 10a 11 00a X7 138/333 MDW B 10 20a 3 10p 154/309 MDW S/L 2 20p 6 15p 6 122/305 MDW S 3 50p 7 40p 150/307 MDW D 5 35p 9 35p X6 152/337 MDW S
<b>To Minneapolis/St. Paul</b> 7 00a 11 30a X7 304/397 MDW B 9 30a 2 05p 7 318/177 MDW S 12 30p 5 10p 308/365 MDW L 4 35p 8 10p X6 332/379 MDW D	<b>From Minneapolis/St. Paul</b> 7 00a 11 00a X7 386/333 MDW B 10 20a 3 10p 344/309 MDW L 2 25p 6 15p 6 172/305 MDW S 3 25p 7 40p 388/307 MDW D 5 30p 9 35p X6 378/337 MDW S
<b>To New York/White Plains</b> Airports: L-LaGuardia W-White Plains 7 00a 3 00pL X7 304/390 MDW B 9 30a 3 00pL 7 318/390 MDW L 9 30a 5 05pW7 318/142 MDW L 12 30p 6 00pL 308/382 MDW L 4 35p 9 55pL X6 332/180 MDW D	<b>From New York/White Plains</b> Airports: L-LaGuardia W-White Plains 7 20aL 11 00a X67 185/333 MDW B 8 25aW 3 10p X7 183/309 MDW L 11 30aL 3 10p X67 193/309 MDW L 11 30aL 3 10p 67 393/309 MDW L 2 30pL 6 15p 6 365/305 MDW S 4 00pL 7 40p 391/307 MDW D
<b>To Philadelphia</b> 7 00a 3 00p X7 304/344 MDW L 9 30a 3 00p 7 318/344 MDW L 12 30p 7 15p X6 308/172 MDW D 4 35p 9 55p X6 332/378 MDW D	<b>From Philadelphia</b> 7 10a 11 00a X7 375/333 MDW B 11 30a 3 10p X7 177/309 MDW L 11 30a 3 10p 7 377/309 MDW L 3 30p 7 40p 361/307 MDW D 5 30p 9 35p X6 379/337 MDW D



FEATURING...



&



EFFECTIVE JULY 1, 1985

## DALLAS/FT. WORTH (Cont'd)

Leave	Arrive	Freq.	Flight Number	Via/ Stops	Meals	Remarks	Leave	Arrive	Freq.	Flight Number	Via/ Stops	Meals	Remarks
<b>To Washington, DC</b> National Airport							<b>From Washington, DC</b> National Airport						
7 00a	2 20p	X7	304/156	MDW	B		7 35a	11 00a	X7	157/333	MDW	B	
9 30a	2 20p	7	318/156	MDW	L		11 25a	3 10p		129/309	MDW	L	
12 30p	5 20p		308/120	MDW	L		2 40p	6 15p	6	153/305	MDW	S	
4 35p	9 50p	X6	332/152	MDW	D		2 40p	7 40p		153/307	MDW	D	
							5 45p	9 35p	X6	151/337	MDW	D	
<b>To White Plains</b>							<b>From White Plains</b>						
9 30a	5 05p	7	318/142	MDW	L		8 25a	3 10p	X7	183/309	MDW	L	

## DETROIT

Reservations and Information 1-800-621-5700

<b>To Boston</b>							<b>From Boston</b>						
11 55a	3 56p		515/330	CLE	S		1 10p	5 05p		331/530	CLE	S	
<b>To Chicago</b> Midway Airport							<b>From Chicago</b> Midway Airport						
8 00a	7 55a	X7	301	0	S		7 00a	8 50a	X7	302	0	S	
9 10a	9 00a	X7	303	0	S/		9 30a	11 20a	X7	304	0	S/	
12 30p	12 25p		309	0	S		12 00n	1 50p		318	0	S	
2 30p	2 25p		317	0	S/		1 00p	2 50p		306	0	S/	
3 30p	3 20p		305	0	S/		3 00p	4 50p		308	0	S/	
5 10p	5 00p	X6	307	0	S		4 00p	5 50p	X6	122	0	S/	
6 10p	6 05p	X6	121	0	S		5 00p	6 50p	X6	310	0	S	
7 10p	7 00p	X6	311	0	S/		7 30p	9 20p	X6	312	0	S/	
<b>To Cleveland</b>							<b>From Cleveland</b>						
11 55a	12 30p		506	0			4 30p	5 05p		530	0		
<b>To Dallas/Ft. Worth</b>							<b>From Dallas/Ft. Worth</b>						
8 00a	11 00a	X7	301/333	MDW	B		7 00a	11 20a	X7	304	1	B	
12 30p	3 10p		309	1	S/L		9 30a	1 50p	7	318	1	S	
3 30p	6 15p	6	305	1	S		12 30p	4 50p		308	1	L	
5 10p	7 40p	X6	307	1	D		4 35p	9 20p	X6	332/312	MDW	D	
7 10p	9 35p	X6	311/337	MDW	S								
<b>To Ft. Lauderdale</b>							<b>From Ft. Lauderdale</b>						
3 30p	10 05p		305/519	MDW	S		9 15a	1 50p		542/318	MDW	S	
5 10p	10 05p	X6	307/519	MDW	S								
<b>To Kansas City</b>							<b>From Kansas City</b>						
8 00a	10 00a	X7	301/157	MDW	S		7 10a	11 20a	X7	138/304	MDW	S	
12 30p	2 00p		309/129	MDW	S		10 20a	1 50p		154/318	MDW	S	
3 30p	5 15p		305/153	MDW	S/		2 20p	5 50p	X6	122	1	S/	
7 10p	8 30p	X6	311/151	MDW	S/		5 35p	9 20p	X6	152/312	MDW	S	
<b>To Miami</b>							<b>From Miami</b>						
8 00a	12 25p	X7	301/511	MDW	S		7 50a	11 30a		506	1	S	
5 45p	9 20p		509	1	S		8 30a	1 50p		542/318	MDW	S	
6 10p	11 00p	X6	121/523	MDW	S								
<b>To Minneapolis/St. Paul</b>							<b>From Minneapolis/St. Paul</b>						
8 00a	9 54a	X7	301/375	MDW	S		7 00a	11 20a	X7	386/304	MDW	S	
9 10a	11 30a	X7	303/397	MDW	S/		10 20a	1 50p		344/318	MDW	S	
12 30p	2 05p		309/177	MDW	S		12 30p	4 50p		376/308	MDW	S	
3 30p	5 10p		305/365	MDW	S/		2 25p	5 50p	X6	172/122	MDW	S/	
6 10p	8 10p	X6	121/379	MDW	S		3 25p	6 50p	X6	388/310	MDW	S	
7 10p	9 20p	X6	311/389	MDW	S/		5 30p	9 20p	X6	378/312	MDW	S	
<b>To Orlando</b>							<b>From Orlando</b>						
8 00a	1 20p	X7	301/565	MDW	S		9 00a	11 30a		506	0	S	
11 55a	3 10p		515	1	S		1 50p	5 05p		530	1	S	
5 45p	8 15p		509	0	S		4 10p	9 20p	X6	518/312	MDW	S	

## DETROIT (Cont'd)

Leave	Arrive	Freq.	Flight Number	Via/ Stops	Meals	Remarks	Leave	Arrive	Freq.	Flight Number	Via/ Stops	Meals	Remarks
<b>To St. Croix</b>							<b>From St. Croix</b>						
8 00a	4 30p	X7	301/511	MDW	S		Consult Midway Or Your Travel Agent						
<b>To St. Thomas</b>							<b>From St. Thomas</b>						
8 00a	3 35p	X7	301/511	MDW	S		Consult Midway Or Your Travel Agent						
<b>To Tampa</b>							<b>From Tampa</b>						
8 00a	12 30p	X7	301/565	MDW	S		8 40a	1 50p		544/318	MDW	S	
9 10a	2 10p	X7	303/503	MDW	S		12 50p	5 05p		530	2	S	
11 55a	4 05p		515	2	S		4 30p	9 20p	X6	520/312	MDW	S	
3 30p	9 55p		305/523	MDW	S								
6 10p	9 55p	X6	121/523	MDW	S								
<b>To West Palm Beach</b>							<b>From West Palm Beach</b>						
9 10a	3 25p	X7	303/503	MDW	S		3 55p	9 20p	X6	510/312	MDW	S	

## FT. LAUDERDALE

Reservations and Information 1-800-621-5700

<b>To Chicago</b> Midway Airport							<b>From Chicago</b> Midway Airport						
9 15a	11 10a		542	0	S		6 10p	10 05p		519	0	S	
<b>To Cleveland</b>							<b>From Cleveland</b>						
9 15a	2 05p		542/330	MDW	S		3 20p	10 05p		331/519	MDW	S	
							5 05p	10 05p	X6	141/519	MDW	S	
<b>To Detroit</b>							<b>From Detroit</b>						
9 15a	1 50p		542/318	MDW	S		3 30p	10 05p		305/519	MDW	S	
							5 10p	10 05p	X6	307/519	MDW	S	
<b>To Kansas City</b>							<b>From Kansas City</b>						
9 15a	2 00p		542/129	MDW	S		3 50p	10 05p		150/519	MDW	S	
<b>To Miami</b>							<b>From Miami</b>						
10 15p	10 40p		519	0			8 30a	8 55a		542	0		
<b>To Minneapolis/St. Paul</b>							<b>From Minneapolis/St. Paul</b>						
9 15a	2 05p		542/177	MDW	S		3 25p	10 05p		388/519	MDW	S	

## KANSAS CITY

Reservations and Information 1-800-621-5700

<b>To Boston</b>							<b>From Boston</b>						
10 20a	3 56p		154/330	MDW	S		7 40a	2 00p	X7	339/129	MDW	B	
2 20p	7 46p	X6	122/336	MDW	D		1 10p	5 15p		331/153	MDW	S	
							4 35p	8 30p	X6	337/151	MDW	D	
<b>To Chicago</b> Midway Airport							<b>From Chicago</b> Midway Airport						
7 10a	8 20a	X7	138	0	S		8 45a	10 00a	X7	157	0	S	
10 20a	11 30a		154	0	S		12 45p	2 00p		129	0	S	
2 20p	3 30p		122	0	S/		2 15p	3 30p		181	0	S/	
3 50p	5 00p		150	0	S/		4 00p	5 15p		153	0	S/	
5 35p	6 45p	X6	152	0	S		7 15p	8 30p	X6	151	0	S/	
<b>To Cincinnati</b>							<b>From Cincinnati</b>						
3 50p	9 15p		150/512	MDW	S		8 00a	10 00a	X7	511/157	MDW	S	
5 35p	9 15p	X6	152/512	MDW	S		6 45p	8 30p	X6	520/151	MDW	S	



FEATURING...

## KANSAS CITY (Cont'd)

Leave	Arrive	Freq.	Flight Number	Via/ Stops	Meals	Remarks	Leave	Arrive	Freq.	Flight Number	Via/ Stops	Meals	Remarks
<b>To Cleveland</b>							<b>From Cleveland</b>						
7 10a	11 05a	X7	138	1	S		8 00a	10 00a	X7	333/157	MDW	S	
10 20a	2 05p		154/330	MDW	S		12 20p	2 00p		135/129	MDW	S	
2 20p	5 55p	X6	122/336	MDW	S/		3 20p	5 15p		331/153	MDW	S/	
5 35p	9 05p	X6	152/332	MDW	S		6 45p	8 30p	X6	337/151	MDW	S	
<b>To Dallas/Ft. Worth</b>							<b>From Dallas/Ft. Worth</b>						
7 10a	11 00a	X7	138/333	MDW	B		7 00a	2 00p	X7	304/129	MDW	B	
10 20a	3 10p		154/309	MDW	L		9 30a	2 00p	7	318/129	MDW	S	
2 20p	6 15p	6	122/305	MDW	S		12 30p	5 15p		308/153	MDW	L	
3 50p	7 40p		150/307	MDW	D		4 35p	8 30p	X6	332/151	MDW	D	
5 35p	9 35p	X6	152/337	MDW	S								
<b>To Detroit</b>							<b>From Detroit</b>						
7 10a	11 20a	X7	138/304	MDW	S		8 00a	10 00a	X7	301/157	MDW	S	
10 20a	1 50p		154/318	MDW	S		12 30p	2 00p		309/129	MDW	S	
2 20p	5 50p	X6	122	1	S/		3 30p	5 15p		305/153	MDW	S/	
5 35p	9 20p	X6	152/312	MDW	S		7 10p	8 30p	X6	311/151	MDW	S/	
<b>To Ft. Lauderdale</b>							<b>From Ft. Lauderdale</b>						
3 50p	10 05p		150/519	MDW	S		9 15a	2 00p		542/129	MDW	S	
<b>To Miami</b>							<b>From Miami</b>						
3 50p	10 40p		150/519	MDW	S		8 30a	2 00p		542/129	MDW	S	
<b>To Minneapolis/St. Paul</b>							<b>From Minneapolis/St. Paul</b>						
7 10a	9 54a	X7	138/375	MDW	S		7 00a	10 00a	X7	386/157	MDW	S	
10 20a	2 05p		154/177	MDW	S		10 20a	2 00p		344/129	MDW	S	
2 20p	5 10p		122/365	MDW	S/		12 30p	3 30p		376/181	MDW	S	
5 35p	8 10p	X6	152/379	MDW	S		2 25p	5 15p		172/153	MDW	S/	
							5 30p	8 30p	X6	378/151	MDW	S	
<b>To New York/White Plains</b>							<b>From New York/White Plains</b>						
Airports: L-LaGuardia W-White Plains							Airports: L-LaGuardia W-White Plains						
7 10a	12 00n	L X7	138/386	MDW	B		7 20a	10 00a	X67	185/157	MDW	B	
10 20a	3 00p	L	154/390	MDW	L		8 25a	W 2 00p	X7	183/129	MDW	S	
10 20a	5 05p	W X6	154/142	MDW	L		11 30a	L 2 00p	X67	193/129	MDW	L	
2 20p	8 00p	L	122/388	MDW	D		11 30a	L 2 00p	67	393/129	MDW	L	
3 50p	8 55p	L X6	150/396	MDW	D		2 30p	L 5 15p		365/153	MDW	S	
5 35p	9 55p	L X6	152/180	MDW	D		4 00p	L 8 30p	X6	391/151	MDW	S	
<b>To Orlando</b>							<b>From Orlando</b>						
7 10a	3 10p	X7	138/515	CLE	S		4 10p	8 30p	X6	518/151	MDW	S	
10 20a	3 40p		154/545	MDW	S								
<b>To Philadelphia</b>							<b>From Philadelphia</b>						
10 20a	3 00p		154/344	MDW	L		7 10a	10 00a	X7	375/157	MDW	B	
2 20p	7 15p	X6	122/172	MDW	D		11 30a	2 00p	X7	177/129	MDW	L	
5 35p	9 55p	X6	152/378	MDW	S		11 30a	2 00p	7	377/129	MDW	L	
							5 30p	8 30p	X6	379/151	MDW	D	
<b>To Tampa</b>							<b>From Tampa</b>						
7 10a	2 10p	X7	138/503	MDW	S		8 40a	2 00p		544/129	MDW	S	
3 50p	9 55p		150/523	MDW	S		4 30p	8 30p	X6	520/151	MDW	S	
<b>To Washington, DC</b>							<b>From Washington, DC</b>						
National Airport							National Airport						
10 20a	2 20p		154/156	MDW	L		7 35a	10 00a	X7	157	1	B	
3 50p	7 59p	X6	150	1	D		11 25a	2 00p		129	1	L	
5 35p	9 50p	X6	152	1	S		2 40p	5 15p		153	1	S	
							5 45p	8 30p	X6	151	1	D	
<b>To West Palm Beach</b>							<b>From West Palm Beach</b>						
7 10a	3 25p	X7	138/503	MDW	S		3 55p	8 30p	X6	510/151	MDW	S	
<b>To White Plains</b>							<b>From White Plains</b>						
10 20a	5 05p	X6	154/142	MDW	L		8 25a	2 00p	X7	183/129	MDW	L	

**Page 10** Flights shown in burgundy operated by Midway Metrolink with DC-9 Jet Aircraft. Flights shown in black operated by Midway Express with Boeing 737 Aircraft. Certain Flights Will Not Operate During Holiday Periods. MDW-Connection at Midway, Chicago's Close-In Airport.

# Metro-Miser<sup>SM</sup> Low fares without a lot of fine print.

They're better than most airlines'  
"Special Fares." Just take a look:

Chicago to Detroit	\$44
Minneapolis/St. Paul to Chicago	\$54
Cleveland to Chicago	\$54
Kansas City to Chicago	\$54
Kansas City to Minneapolis/St. Paul	\$54
Chicago to New York (LaGuardia)	\$89
Washington, D.C. to Chicago	\$89
Cleveland to Boston	\$89
Chicago to Philadelphia	\$89
Detroit to Dallas/Ft. Worth	\$99
Chicago to Dallas/Ft. Worth	\$99
Washington, D.C. to Kansas City	\$99
Minneapolis/St. Paul to New York (LaGuardia)	\$119
Philadelphia to Kansas City	\$119

For a complete list of our Metro-Miser<sup>SM</sup> fares to other destinations, call Midway Airlines<sup>®</sup> at 1-800-621-5700, in Chicago (312) 767-3400, or call your travel agent.

Fares listed are one way based on a round trip purchase, at least 14 days in advance of travel. Seats are limited. Some restrictions apply. All schedules and fares subject to change without notice.

PUT YOURSELF FIRST

**Midway Airlines<sup>®</sup>**  
The best value in the air.

# Now, you can enjoy Metrolink<sup>SM</sup> and Express Service to more cities, at more convenient times.





# Fly Midway Express<sup>SM</sup> for great fares to great places.

Super fares and super service  
make flying to the sun more fun.

Miami to Orlando	\$39 <sup>†</sup>
Detroit to Tampa	\$89 <sup>†</sup>
Detroit to Orlando	\$89 <sup>†</sup>
Cleveland to Tampa	\$89 <sup>†</sup>
Orlando to Cleveland	\$89 <sup>†</sup>
Chicago to Orlando	\$99 <sup>†</sup>
Cincinnati to West Palm Beach	\$109 <sup>†</sup>
Chicago to Miami	\$109 <sup>†</sup>
Ft. Lauderdale to Chicago	\$109 <sup>†</sup>
Miami to Cleveland	\$109 <sup>†</sup>
Orlando to Cincinnati	\$109 <sup>†</sup>
Tampa to Chicago	\$109 <sup>†</sup>
West Palm Beach to Chicago	\$109 <sup>†</sup>
Chicago to St. Thomas, V.I.	\$209*
Chicago to St. Croix, V.I.	\$209*

For a complete list of our destinations  
and low fares, call Midway Airlines<sup>®</sup> at  
1-800-621-5700, in Chicago (312)  
767-3400, or call your travel agent.

Fares quoted are one way based on a round trip purchase. Seats are limited. Some restrictions apply. All schedules and fares subject to change without notice.

<sup>†</sup>Metro-Miser fares require purchase at least 14 days in advance of travel.

\*\$3.00 international departure tax applies.

PUT YOURSELF FIRST

**Midway Airlines<sup>®</sup>**  
The best value in the air.

© 1985 Midway Airlines, Inc.

**Midway  
Metrolink<sup>™</sup>**

&

**Midway Express**

EFFECTIVE JULY 1, 1985

## MIAMI

Reservations and Information 1-800-621-5700

To Chicago Midway Airport	From Chicago Midway Airport
7 30a 10 10a 544 1 S	8 30a 12 25p 511 0 S
8 30a 11 10a 542 1 S	3 00p 9 20p 308/509 DTW S
8 10p 10 10p 516 0 S	6 10p 10 40p 519 1 S
	6 25p 11 00p 523 1 S
To Cincinnati Consult Midway Or Your Travel Agent	From Cincinnati
	8 00a 12 25p 511 1 S
To Cleveland	From Cleveland
7 50a 12 30p 506 2 S	8 00a 12 25p X7 333/511 MDW S
8 30a 2 05p 542/330 MDW S	4 30p 9 20p 509 2 S
	5 05p 10 40p X6 141/519 MDW S
To Detroit	From Detroit
7 50a 11 30a 506 1 S	8 00a 12 25p X7 301/511 MDW S
8 30a 1 50p 542/318 MDW S	5 45p 9 20p 509 1 S
	6 10p 11 00p X6 121/523 MDW S
To Ft. Lauderdale	From Ft. Lauderdale
8 30a 8 55a 542 0	10 15p 10 40p 519 0
To Kansas City	From Kansas City
8 30a 2 00p 542/129 MDW S	3 50p 10 40p 150/519 MDW S
To Minneapolis/St. Paul	From Minneapolis/St. Paul
8 30a 2 05p 542/177 MDW S	7 00a 12 25p X7 386/511 MDW S
	3 25p 10 40p 388/519 MDW S
To Orlando	From Orlando
7 50a 8 40a 506 0	8 30p 9 20p 509 0
To St. Croix	From St. Croix
1 00p 4 30p 511 1 S	4 55p 7 40p 516 0 S
To St. Thomas	From St. Thomas
1 00p 3 35p 511 0 S	4 05p 7 40p 516 1 S
To Tampa	From Tampa
7 30a 8 20a 544 0	10 10p 11 00p 523 0

## MINNEAPOLIS/ST. PAUL

Reservations and Information 1-800-621-5700

To Boston	From Boston
10 20a 3 56p 344/330 MDW S	7 40a 11 30a X7 339/397 MDW B/S
2 25p 7 46p X6 172/336 MDW D	1 10p 5 10p 331/365 MDW S
	4 35p 9 20p X6 337/389 MDW D/S
To Chicago Midway Airport	From Chicago Midway Airport
7 00a 8 08a X7 386 0 S	7 00a 8 08a X7 347 0 S
8 35a 9 43a X7 348 0 S	8 45a 9 54a X7 375 0 S
10 20a 11 28a 344 0 S/	10 20a 11 30a 397 0 S/
12 30p 1 38p 376 0 S	12 55p 2 05p 177 0 S
2 25p 3 33p 172 0 S/	1 55p 3 05p 371 0 S/
3 25p 4 33p 388 0 S/	4 00p 5 10p 365 0 S/
5 30p 6 38p X6 378 0 S	5 00p 6 10p X6 361 0 S
6 30p 7 38p X6 364 0 S	7 00p 8 10p X6 379 0 S
8 30p 9 38p X6 360 0 S/	8 10p 9 20p X6 389 0 S/
To Cincinnati	From Cincinnati
3 25p 9 15p 388/512 MDW S/	8 00a 9 54a X7 511/375 MDW S
5 30p 9 15p X6 378/512 MDW S	8 00a 11 30a 511/397 MDW S/
	6 45p 8 10p X6 520/379 MDW S/

X-Except 2-Tuesday 4-Thursday 6-Saturday E-Effective  
1-Monday 3-Wednesday 5-Friday 7-Sunday D-Discontinued  
MetroClub Meal/MetroClass Meal S-Snack B-Breakfast L-Lunch D-Dinner  
Contact Midway Airlines or Your Travel Agent for Details. **Page 15**



FEATURING . . .



&



EFFECTIVE JULY 1, 1985

## MINNEAPOLIS/ST. PAUL (Cont'd)

Leave	Arrive	Freq.	Flight Number	Via/ Stops	Meals	Remarks	Leave	Arrive	Freq.	Flight Number	Via/ Stops	Meals	Remarks
<b>To Cleveland</b>							<b>From Cleveland</b>						
7 00a	11 05a	X7	386/138	MDW	S		8 00a	9 54a	X7	333/375	MDW	S	
10 20a	2 05p		344/330	MDW	S		9 50a	11 30a	X7	339/397	MDW	S/	
12 30p	4 45p		376/140	MDW	S		12 20p	2 05p		135/177	MDW	S	
2 25p	5 55p	X6	172/336	MDW	S/		3 20p	5 10p		331/365	MDW	S/	
5 30p	9 05p	X6	378/332	MDW	S		5 05p	8 10p	X6	141/379	MDW	S	
							6 45p	9 20p	X6	337/389	MDW	S	
<b>To Dallas/Ft. Worth</b>							<b>From Dallas/Ft. Worth</b>						
7 00a	11 00a	X7	386/333	MDW	B		7 00a	11 30a	X7	304/397	MDW	B	
10 20a	3 10p		344/309	MDW	L		9 30a	2 05p	7	318/177	MDW	S	
2 25p	6 15p	6	172/305	MDW	S		12 30p	5 10p		308/365	MDW	L	
3 25p	7 40p		388/307	MDW	D		4 35p	8 10p	X6	332/379	MDW	D	
5 30p	9 35p	X6	378/337	MDW	S								
<b>To Detroit</b>							<b>From Detroit</b>						
7 00a	11 20a	X7	386/304	MDW	S		8 00a	9 54a	X7	301/375	MDW	S	
10 20a	1 50p		344/318	MDW	S		9 10a	11 30a	X7	303/397	MDW	S/	
12 30p	4 50p		376/308	MDW	S		12 30p	2 05p		309/177	MDW	S	
2 25p	5 50p	X6	172/122	MDW	S/		3 30p	5 10p		305/365	MDW	S/	
3 25p	6 50p	X6	388/310	MDW	S/		6 10p	8 10p	X6	121/379	MDW	S	
5 30p	9 20p	X6	378/312	MDW	S		7 10p	9 20p	X6	311/389	MDW	S/	
<b>To Ft. Lauderdale</b>							<b>From Ft. Lauderdale</b>						
3 25p	10 05p		388/519	MDW	S		9 15a	2 05p		542/177	MDW	S	
<b>To Kansas City</b>							<b>From Kansas City</b>						
7 00a	10 00a	X7	386/157	MDW	S		7 10a	9 54a	X7	138/375	MDW	S	
10 20a	2 00p		344/129	MDW	S		10 20a	2 05p		154/177	MDW	S	
12 30p	3 30p		376/181	MDW	S		2 20p	5 10p		122/365	MDW	S/	
2 25p	5 15p		172/153	MDW	S/		5 35p	8 10p	X6	152/379	MDW	S	
5 30p	8 30p	X6	378/151	MDW	S								
<b>To Miami</b>							<b>From Miami</b>						
7 00a	12 25p	X7	386/511	MDW	S		8 30a	2 05p		542/177	MDW	S	
3 25p	10 40p		388/519	MDW	S								
<b>To New York/White Plains</b>							<b>From New York/White Plains</b>						
Airports: L-LaGuardia W-White Plains							Airports: L-LaGuardia W-White Plains						
7 00a	12 00nL	X7	386	1	B		7 20aL	9 54a	X67	185/375	MDW	B	
10 20a	3 00pL		344/390	MDW	L		8 25aW	2 05p	X7	183/177	MDW	S	
10 20a	5 05pWX6		344/142	MDW	L		8 30aL	11 30a	X7	397	1	B	
12 30p	6 00pL		376/382	MDW	S		11 30aL	2 05p	X67	193/177	MDW	L	
3 25p	8 00pL		388	1	D		11 30aL	2 05p	67	393/177	MDW	L	
5 30p	9 55pL	X6	378/180	MDW	D		2 30pL	5 10p		365	1	S	
							4 00pL	8 10p	X6	391/379	MDW	S	
							5 35pW	9 20p	X6	186/389	MDW	D	
							6 30pL	9 20p	X6	389	1	D	
<b>To Orlando</b>							<b>From Orlando</b>						
10 20a	3 40p		344/545	MDW	S		4 10p	8 10p	X6	518/379	MDW	S	
<b>To Philadelphia</b>							<b>From Philadelphia</b>						
10 20a	3 00p		344	1	L		7 10a	9 54a	X7	375	1	B	
12 30p	4 55p		376	1	S		11 30a	2 05p	7	377/177	MDW	L	
2 25p	7 15p	X6	172	1	D		11 30a	2 05p	X7	177	1	L	
5 30p	9 55p	X6	378	1	S		3 30p	6 10p	X6	361	1	S	
							5 30p	8 10p	X6	379	1	D	
<b>To St. Croix</b>							<b>From St. Croix</b>						
7 00a	4 30p	X7	386/511	MDW	S		Consult Midway Or Your Travel Agent						
<b>To St. Thomas</b>							<b>From St. Thomas</b>						
7 00a	3 35p	X7	386/511	MDW	S		Consult Midway Or Your Travel Agent						
<b>To Tampa</b>							<b>From Tampa</b>						
8 35a	2 10p	X7	348/503	MDW	S		8 40a	2 05p		544/177	MDW	S	
3 25p	9 55p		388/523	MDW	S		4 30p	8 10p	X6	520/379	MDW	S	

## MINNEAPOLIS/ST. PAUL (Cont'd)

Leave	Arrive	Freq.	Flight Number	Via/ Stops	Meals	Remarks	Leave	Arrive	Freq.	Flight Number	Via/ Stops	Meals	Remarks
<b>To Washington, DC</b>							<b>From Washington, DC</b>						
National Airport							National Airport						
10 20a	2 20p		344/156	MDW	L		7 35a	9 54a	X7	157/375	MDW	B	
12 30p	5 20p		376/120	MDW	S		11 25a	2 05p		129/177	MDW	L	
3 25p	7 59p	X6	388/150	MDW	D		2 40p	5 10p		153/365	MDW	S	
5 30p	9 50p	X6	378/152	MDW	S		5 45p	8 10p	X6	151/379	MDW	D	
							6 55p	9 20p	X6	186/389	MDW	D	
<b>To West Palm Beach</b>							<b>From West Palm Beach</b>						
8 35a	3 25p	X7	348/503	MDW	S		3 55p	8 10p	X6	510/379	MDW	S	
<b>To White Plains</b>							<b>From White Plains</b>						
10 20a	5 05p	X6	344/142	MDW	L		8 25a	2 05p	X7	183/177	MDW	S	
							5 35p	9 20p	X6	186/389	MDW	D	
<b>NEW YORK/WHITE PLAINS</b>													
Reservations and Information 1-800-621-5700													
Airports: L-LaGuardia W-White Plains													
<b>To Chicago</b>							<b>From Chicago</b>						
Midway Airport							Midway Airport						
7 20aL	8 30a	X67	185	0	B		7 00a	10 00aL	X67	384	0	B	
8 25aW	10 35a	X7	183	1	S		8 00a	10 55aL	X67	192	0	B	
8 30aL	9 40a	X7	397	0	B		8 00a	10 55aL	6	392	0	B	
10 30aL	11 35a	6	187	0	S		9 00a	12 00nL		386	0	B	
10 30aL	11 35a	X6	387	0	S		12 00n	3 00pL		390	0	L	
11 30aL	12 30p	X67	193	0	L		1 05p	5 05pWX6		142	1	L	
11 30aL	12 30p	67	393	0	L		3 00p	6 00pL		382	0	S	
2 30pL	3 35p		365	0	S		5 00p	8 00pL		388	0	D	
4 00pL	5 10p		391	0	S		6 00p	8 55pL	X6	396	0	D	
5 35pW	7 45p	X6	186	1	D		7 00p	9 55pL	X6	180	0	D	
6 30pL	7 40p	X6	389	0	D								
8 30pL	9 40p	X6	399	0	S								
<b>To Dallas/Ft. Worth</b>							<b>From Dallas/Ft. Worth</b>						
7 20aL	11 00a	X67	185/333	MDW	B		7 00a	3 00pL	X7	304/390	MDW	B	
8 25aW	3 10p	X7	183/309	MDW	L		9 30a	3 00pL	7	318/390	MDW	L	
11 30aL	3 10p	X67	193/309	MDW	L		9 30a	5 05pW7		318/142	MDW	L	
11 30aL	3 10p	67	393/309	MDW	L		12 30p	6 00pL		308/382	MDW	L	
2 30pL	6 15p	6	365/305	MDW	S		4 35p	9 55pL	X6	332/180	MDW	D	
4 00pL	7 40p		391/307	MDW	D								
<b>To Kansas City</b>							<b>From Kansas City</b>						
7 20aL	10 00a	X67	185/157	MDW	B		7 10a	12 00nL	X7	138/386	MDW	B	
8 25aW	2 00p	X7	183/129	MDW	S		10 20a	3 00pL		154/390	MDW	L	
11 30aL	2 00p	X67	193/129	MDW	L		10 20a	5 05pWX6		154/142	MDW	L	
11 30aL	2 00p	67	393/129	MDW	L		2 20p	8 00pL		122/388	MDW	D	
2 30pL	5 15p		365/153	MDW	S		3 50p	8 55pL	X6	150/396	MDW	D	
4 00pL	8 30p	X6	391/151	MDW	S		5 35p	9 55pL	X6	152/180	MDW	D	
<b>To Minneapolis/St. Paul</b>							<b>From Minneapolis/St. Paul</b>						
7 20aL	9 54a	X67	185/375	MDW	B		7 00a	12 00nL	X7	386	1	B	
8 25aW	2 05p	X7	183/177	MDW	S		10 20a	3 00pL		344/390	MDW	L	
8 30aL	11 30a	X7	397	1	B		10 20a	5 05pWX6		344/142	MDW	L	
11 30aL	2 05p	X67	193/177	MDW	L		12 30p	6 00pL		376/382	MDW	S	
11 30aL	2 05p	67	393/177	MDW	L		3 25p	8 00pL		388	1	D	
2 30pL	5 10p		365	1	S		5 30p	9 55pL	X6	378/180	MDW	D	
4 00pL	8 10p	X6	391/379	MDW	S								
5 35pW	9 20p	X6	186/389	MDW	D								
6 30pL	9 20p	X6	389	1	D								
<b>To Washington, DC</b>							<b>From Washington, DC</b>						
National Airport							National Airport						
8 25aW	9 25a	X7	183	0	S		7 10a	8 10aWX7		189	0	S	
5 35pW	6 35p	X6	186	0	S		4 05p	5 05pWX6		142	0	S	



FEATURING...



EFFECTIVE JULY 1, 1985

## ORLANDO

Reservations and Information 1-800-621-5700

To Chicago						From Chicago					
Midway Airport						Midway Airport					
9 00a	12 25p	506/309	DTW	S		8 15a	1 20p	565	2	S	
1 50p	5 10p	X6 530/141	CLE	S		9 30a	3 10p	X7 304/515	DTW	S	
3 35p	6 45p	520	2	S		12 10p	3 40p	545	0	S	
4 10p	5 40p	518	0	S		3 00p	8 15p	308/509	DTW	S	
To Cincinnati						From Cincinnati					
3 35p	6 25p	520	1	S		10 35a	1 20p	565	1	S	
4 10p	9 15p	518/512	MDW	S							
To Cleveland						From Cleveland					
9 00a	12 30p	506	1	S		12 50p	3 10p	515	0	S	
1 50p	4 10p	530	0	S		4 30p	8 15p	509	1	S	
4 10p	9 05p	X6 518/332	MDW	S							
To Detroit						From Detroit					
9 00a	11 30a	506	0	S		8 00a	1 20p	X7 301/565	MDW	S	
1 50p	5 05p	530	1	S		11 55a	3 10p	515	1	S	
4 10p	9 20p	X6 518/312	MDW	S		5 45p	8 15p	509	0	S	
To Kansas City						From Kansas City					
4 10p	8 30p	X6 518/151	MDW	S		7 10a	3 10p	X7 138/515	CLE	S	
						10 20a	3 40p	154/545	MDW	S	
To Miami						From Miami					
8 30p	9 20p	509	0			7 50a	8 40a	506	0		
To Minneapolis/St. Paul						From Minneapolis/St. Paul					
4 10p	8 10p	X6 518/379	MDW	S		10 20a	3 40p	344/545	MDW	S	
To Tampa						From Tampa					
3 35p	4 05p	515	0			12 50p	1 20p	565	0		

## PHILADELPHIA

Reservations and Information 1-800-621-5700

To Chicago						From Chicago					
Midway Airport						Midway Airport					
7 10a	8 08a	X7 375	0	B		7 05a	9 50a	X7 174	0	B	
11 30a	12 28p	X7 177	0	L		12 15p	3 00p	344	0	L	
11 30a	12 28p	7 377	0	L		2 10p	4 55p	376	0	S	
3 30p	4 28p	361	0	S		4 30p	7 15p	X6 172	0	D	
5 30p	6 28p	X6 379	0	D		7 10p	9 55p	X6 378	0	S	
7 40p	8 38p	X6 173	0	S							
To Dallas/Ft. Worth						From Dallas/Ft. Worth					
7 10a	11 00a	X7 375/333	MDW	B		7 00a	3 00p	X7 304/344	MDW	L	
11 30a	3 10p	X7 177/309	MDW	L		9 30a	3 00p	7 318/344	MDW	L	
11 30a	3 10p	7 377/309	MDW	L		12 30p	7 15p	X6 308/172	MDW	D	
3 30p	7 40p	361/307	MDW	D		4 35p	9 55p	X6 332/378	MDW	D	
5 30p	9 35p	X6 379/337	MDW	D							
To Kansas City						From Kansas City					
7 10a	10 00a	X7 375/157	MDW	B		10 20a	3 00p	154/344	MDW	L	
11 30a	2 00p	X7 177/129	MDW	L		2 20p	7 15p	X6 122/172	MDW	D	
11 30a	2 00p	7 377/129	MDW	L		5 35p	9 55p	X6 152/378	MDW	S	
5 30p	8 30p	X6 379/151	MDW	D							
To Minneapolis/St. Paul						From Minneapolis/St. Paul					
7 10a	9 54a	X7 375	1	B		10 20a	3 00p	344	1	L	
11 30a	2 05p	7 377/177	MDW	L		12 30p	4 55p	376	1	S	
11 30a	2 05p	X7 177	1	L		2 25p	7 15p	X6 172	1	D	
3 30p	6 10p	X6 361	1	S		5 30p	9 55p	X6 378	1	S	
5 30p	8 10p	X6 379	1	D							

## ST. CROIX

Reservations and Information 1-800-621-5700

To Chicago						From Chicago					
Midway Airport						Midway Airport					
4 55p	10 10p	516	1	S		8 30a	4 30p	511	2	S	
To Cincinnati						From Cincinnati					
Consult Midway Or Your Travel Agent						8 00a	4 30p	511	3	S	
To Cleveland						From Cleveland					
Consult Midway Or Your Travel Agent						8 00a	4 30p	X7 333/511	MDW	S	
To Detroit						From Detroit					
Consult Midway Or Your Travel Agent						8 00a	4 30p	X7 301/511	MDW	S	
To Miami						From Miami					
4 55p	7 40p	516	0	S		1 00p	4 30p	511	1	S	
To Minneapolis/St. Paul						From Minneapolis/St. Paul					
Consult Midway Or Your Travel Agent						7 00a	4 30p	X7 386/511	MDW	S	
To St. Thomas						From St. Thomas					
Consult Midway Or Your Travel Agent						4 05p	4 30p	511	0		

## ST. THOMAS

Reservations and Information 1-800-621-5700

To Chicago						From Chicago					
Midway Airport						Midway Airport					
4 05p	10 10p	516	2	S		8 30a	3 35p	511	1	S	
To Cincinnati						From Cincinnati					
Consult Midway Or Your Travel Agent						8 00a	3 35p	511	2	S	
To Cleveland						From Cleveland					
Consult Midway Or Your Travel Agent						8 00a	3 35p	X7 333/511	MDW	S	
To Detroit						From Detroit					
Consult Midway Or Your Travel Agent						8 00a	3 35p	X7 301/511	MDW	S	
To Miami						From Miami					
4 05p	7 40p	516	1	S		1 00p	3 35p	511	0	S	
To Minneapolis/St. Paul						From Minneapolis/St. Paul					
Consult Midway Or Your Travel Agent						7 00a	3 35p	X7 386/511	MDW	S	
To St. Croix						From St. Croix					
Consult Midway Or Your Travel Agent						4 05p	4 30p	511	0		

## TAMPA

Reservations and Information 1-800-621-5700

To Chicago						From Chicago					
Midway Airport						Midway Airport					
8 40a	10 10a	544	0	S		8 15a	12 30p	565	1	S	
12 50p	5 10p	X6 530/141	CLE	S		10 40a	2 10p	503	0	S	
2 35p	5 40p	510	1	S		6 25p	9 55p	523	0	S	
4 30p	6 45p	520	1	S							
To Cincinnati						From Cincinnati					
4 30p	6 25p	520	0	S		10 35a	12 30p	565	0	S	



FEATURING...



&



EFFECTIVE JULY 1, 1985

## TAMPA (Cont'd)

Leave	Arrive	Freq.	Flight Number	Via/ Stops	Meals	Remarks	Leave	Arrive	Freq.	Flight Number	Via/ Stops	Meals	Remarks
<b>To Cleveland</b>							<b>From Cleveland</b>						
8 40a	2 05p		544/330	MDW	S		9 50a	2 10p	X7	339/503	MDW	S	
12 50p	4 10p		530	1	S		12 50p	4 05p		515	1	S	
4 30p	9 05p	X6	520/332	MDW	S		3 20p	9 55p		331/523	MDW	S	
							5 05p	9 55p	X6	141/523	MDW	S	
<b>To Detroit</b>							<b>From Detroit</b>						
8 40a	1 50p		544/318	MDW	S		8 00a	12 30p	X7	301/565	MDW	S	
12 50p	5 05p		530	2	S		9 10a	2 10p	X7	303/503	MDW	S	
4 30p	9 20p	X6	520/312	MDW	S		11 55a	4 05p		515	2	S	
							3 30p	9 55p		305/523	MDW	S	
							6 10p	9 55p	X6	121/523	MDW	S	
<b>To Kansas City</b>							<b>From Kansas City</b>						
8 40a	2 00p		544/129	MDW	S		7 10a	2 10p	X7	138/503	MDW	S	
4 30p	8 30p	X6	520/151	MDW	S		3 50p	9 55p		150/523	MDW	S	
<b>To Miami</b>							<b>From Miami</b>						
10 10p	11 00p		523	0			7 30a	8 20a		544	0		
<b>To Minneapolis/St. Paul</b>							<b>From Minneapolis/St. Paul</b>						
8 40a	2 05p		544/177	MDW	S		8 35a	2 10p	X7	348/503	MDW	S	
4 30p	8 10p	X6	520/379	MDW	S		3 25p	9 55p		388/523	MDW	S	
<b>To Orlando</b>							<b>From Orlando</b>						
12 50p	1 20p		565	0			3 35p	4 05p		515	0		
<b>To West Palm Beach</b>							<b>From West Palm Beach</b>						
2 35p	3 25p		503	0			Consult Midway Or Your Travel Agent						

## WASHINGTON, DC

National Airport

Reservations and Information 1-800-621-5700

<b>To Chicago</b> Midway Airport							<b>From Chicago</b> Midway Airport						
7 35a	8 20a	X7	157	0	B		7 25a	10 00a	X7	158	0	B	
9 45a	10 35a	X7	183	0	S		11 45a	2 20p		156	0	L	
11 25a	12 15p		129	0	L		1 05p	3 40p	X6	142	0	L	
2 40p	3 30p		153	0	S		2 45p	5 20p		120	0	S	
5 45p	6 35p	X6	151	0	D		5 25p	7 59p	X6	150	0	D	
6 55p	7 45p	X6	186	0	D		7 15p	9 50p	X6	152	0	S	
<b>To Dallas/Ft. Worth</b>							<b>From Dallas/Ft. Worth</b>						
7 35a	11 00a	X7	157/333	MDW	B		7 00a	2 20p	X7	304/156	MDW	L	
11 25a	3 10p		129/309	MDW	L		9 30a	2 20p	7	318/156	MDW	L	
2 40p	6 15p	6	153/305	MDW	S		12 30p	5 20p		308/120	MDW	L	
2 40p	7 40p		153/307	MDW	D		4 35p	9 50p	X6	332/152	MDW	D	
5 45p	9 35p	X6	151/337	MDW	D								
<b>To Kansas City</b>							<b>From Kansas City</b>						
7 35a	10 00a	X7	157	1	B		10 20a	2 20p		154/156	MDW	L	
11 25a	2 00p		129	1	L		3 50p	7 59p	X6	150	1	D	
2 40p	5 15p		153	1	S		5 35p	9 50p	X6	152	1	S	
5 45p	8 30p	X6	151	1	D								
<b>To Minneapolis/St. Paul</b>							<b>From Minneapolis/St. Paul</b>						
7 35a	9 54a	X7	157/375	MDW	B		10 20a	2 20p		344/156	MDW	L	
11 25a	2 05p		129/177	MDW	L		12 30p	5 20p		376/120	MDW	S	
2 40p	5 10p		153/365	MDW	S		3 25p	7 59p	X6	388/150	MDW	D	
5 45p	8 10p	X6	151/379	MDW	D		5 30p	9 50p	X6	378/152	MDW	S	
6 55p	9 20p	X6	186/389	MDW	D								
<b>To New York/White Plains</b>							<b>From New York/White Plains</b>						
Airports: L-LaGuardia W-White Plains							Airports: L-LaGuardia W-White Plains						
7 10a	8 10a	WX7	189	0	S		8 25a	9 25a	X7	183	0	S	
4 05p	5 05p	WX6	142	0	S		5 35p	6 35p	X6	186	0	S	

## WASHINGTON, DC (Cont'd)

Leave	Arrive	Freq.	Flight Number	Via/ Stops	Meals	Remarks	Leave	Arrive	Freq.	Flight Number	Via/ Stops	Meals	Remarks
<b>To White Plains</b>							<b>From White Plains</b>						
7 10a	8 10a	X7	189	0	S		8 25a	9 25a	X7	183	0	S	
4 05p	5 05p	X6	142	0	S/		5 35p	6 35p	X6	186	0	S/	

## WEST PALM BEACH

Reservations and Information 1-800-621-5700

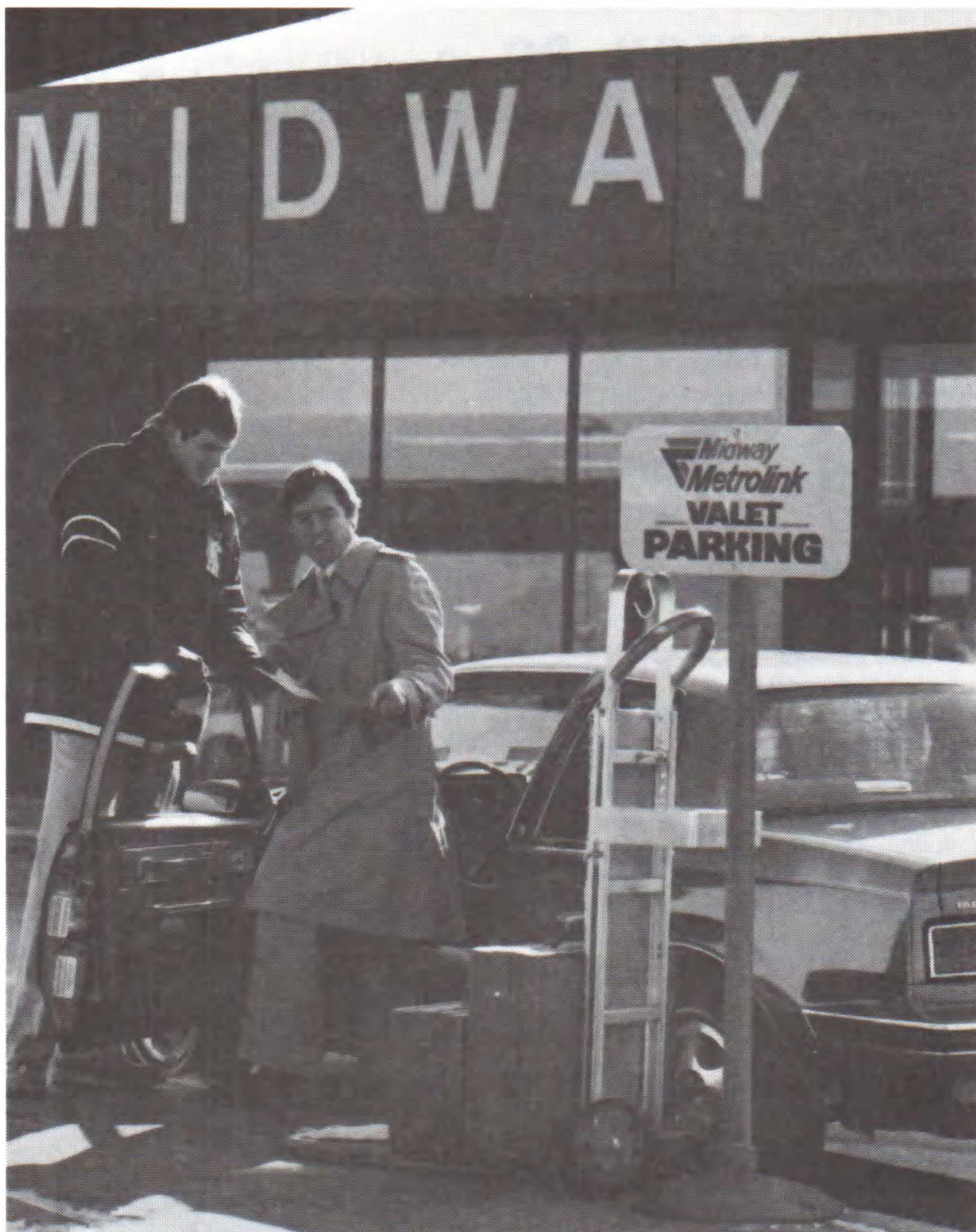
<b>To Chicago</b> Midway Airport							<b>From Chicago</b> Midway Airport						
3 55p	5 40p		510	0	S		10 40a	3 25p		503	1	S	
<b>To Cincinnati</b>							<b>From Cincinnati</b>						
3 55p	9 15p		510/512	MDW	S		10 35a	3 25p		565/503	TPA	S	
<b>To Cleveland</b>							<b>From Cleveland</b>						
3 55p	9 05p	X6	510/332	MDW	S		9 50a	3 25p	X7	339/503	MDW	S	
<b>To Detroit</b>							<b>From Detroit</b>						
3 55p	9 20p	X6	510/312	MDW	S		9 10a	3 25p	X7	303/503	MDW	S	
<b>To Kansas City</b>							<b>From Kansas City</b>						
3 55p	8 30p	X6	510/151	MDW	S		7 10a	3 25p	X7	138/503	MDW	S	
<b>To Minneapolis/St. Paul</b>							<b>From Minneapolis/St. Paul</b>						
3 55p	8 10p	X6	510/379	MDW	S		8 35a	3 25p	X7	348/503	MDW	S	
<b>To Tampa</b>							<b>From Tampa</b>						
Consult Midway Or Your Travel Agent							2 35p 3 25p 503 0						

## WHITE PLAINS

Reservations and Information 1-800-621-5700

<b>To Chicago</b> Midway Airport							<b>From Chicago</b> Midway Airport						
8 25a	10 35a	X7	183	1	S		1 05p	5 05p	X6	142	1	L	
5 35p	7 45p	X6	186	1	D								
<b>To Dallas/Ft. Worth</b>							<b>From Dallas/Ft. Worth</b>						
8 25a	3 10p	X7	183/309	MDW	L		9 30a	5 05p	7	318/142	MDW	L	
<b>To Kansas City</b>							<b>From Kansas City</b>						
8 25a	2 00p	X7	183/129	MDW	S		10 20a	5 05p	X6	154/142	MDW	L	
<b>To Minneapolis/St. Paul</b>							<b>From Minneapolis/St. Paul</b>						
8 25a	2 05p	X7	183/177	MDW	S		10 20a	5 05p	X6	344/142	MDW	L	
5 35p	9 20p	X6	186/389	MDW	D								
<b>To Washington, DC</b> National Airport							<b>From Washington, DC</b> National Airport						
8 25a	9 25a	X7	183	0	S		7 10a	8 10a	X7	189	0	S	
5 35p	6 35p	X6	186	0	S/		4 05p	5 05p	X6	142	0	S/	

**We'll park your car,  
and have it waiting at the door  
when you return.**



Everything is handled for you. Just pull up to Midway Airport—you'll find our valet parking only a few feet from the door—and we'll help you with your luggage, park your car in a fenced lot with 24-hour security, and have your car waiting at the door on your return. The cost: \$10.00 the first day and \$8.00 every day thereafter.

That's first-class valet parking service at Midway Airport. That's the way Midway Airlines® does everything.



## MIDWAY AIRLINES GENERAL INFORMATION

Information below is excerpted from rules applicable to transportation provided by Midway Airlines. The full text of Midway's Contract of Carriage may be inspected at any of Midway's airport and city ticket offices. You may also receive free of charge, the full text of Midway's Contract of Carriage by writing to Midway Airlines, Office of Consumer Affairs, 5700 South Cicero, Chicago, IL 60638.

**AIRCRAFT** — Midway Metrolink's jet fleet features the DC9-10, accommodating 65 passengers, and DC9-30, accommodating 94 passengers, both offering MetroClub and MetroClass seating. Midway Express' jet fleet operates with Boeing 737 equipment accommodating 128 passengers.

**BAGGAGE** — Checked baggage should be locked. Regulations require name identification on outside. Name labels are available at Midway ticket counters. Do not place money, jewelry, medication or prescriptions or other expensive personal items in baggage which is to be checked. These items should be carried personally by you, as Midway accepts no responsibility or liability for these items in case of loss or delay.

Articles that are unsuitably packaged, fragile and/or perishables are accepted as checked baggage only at the passenger's own risk. Checked baggage is subject to inspection and passengers may be required to present identification.

**Free baggage allowance** — For each ticketed passenger, Midway allows three free checked pieces. For size limitations contact Midway Reservations. Excess baggage — extra charges apply to additional and oversized pieces and rates are higher for transportation to/from the Virgin Islands. Certain items, such as skis and golf clubs, will be accepted as one item under your free baggage allowance. Check with Midway Reservations for additional information.

**Carry-on baggage** — Federal Aviation Administration safety regulations require that all baggage that cannot be stowed under a seat or in an approved overhead compartment must be checked.

Midway Airlines' liability for lost, damaged or delayed in delivery of personal baggage is limited to \$1,250 per fare-paying passenger. Excess valuation may be purchased for \$1.00 additional \$100 valuation at check-in time. Midway accepts no responsibility or liability for loss of jewelry, currency, negotiable or other instruments and securities, business documents and other similar valuable or irreplaceable articles included in checked baggage, with or without the knowledge of Midway.

**Claim** — Damaged or lost baggage must be reported, in person, within four hours of passenger's arrival at destination.

**Animals** — Midway Airlines accepts domestic dogs and cats as excess baggage provided passengers furnish their own air-worthy kennels. Pet must accompany passenger on the same flight and will be checked and carried in a pressurized, air-conditioned baggage compartment. There will be a charge of \$21.00.

**CHILDREN** — One child under two (2) years of age, not occupying a seat, will be carried free with a passenger paying the applicable adult fare.

**CREDIT CARDS** — Midway Airlines will accept American Express, Master Charge, Bank Americard/VISA, Carte Blanche, Diners Club and Air Travel Cards.

**HAZARDOUS MATERIALS** — Federal regulations restrict carriage on aircraft of items classified as hazardous materials. These materials include, but are not limited to, flammable gases—liquid and solid, non-flammable compressed gas, explosives, poison, corrosives, oxidizing agents, radioactive material, etiologic agents, and magnetized materials.

**NO SMOKING** — Sections are provided on all Midway aircraft for non-smokers. Generally, the forward portion of each section is reserved for non-smokers. Signs are posted in the cabin designating the no smoking sections.

**ON-BOARD SERVICE** — Both Midway Metrolink and Midway Express serve complimentary coffee and soft drinks on all flights. Beer and wine may be purchased for \$1.00 and cocktails for \$2.00. Metrolink's MetroClub seating includes complimentary beverages.

**PASSENGER CHECK-IN PROCEDURE** — Midway Airlines requests that passengers purchase their tickets and have them validated/confirmed at the ticket counter. Reservation of passengers presenting themselves at the Midway Airlines boarding gate less than ten minutes before scheduled departure of a domestic and less than 30 minutes for international flights will be subject to cancellation. Passengers with pre-assigned seats must present themselves at the departure gate at least 15 minutes before scheduled departure time; otherwise, those seats are subject to reassignment to other passengers. Passengers traveling from the U. S. Virgin Islands must check-in for their flight one hour and 30 minutes before scheduled departure to allow ample time for customs and immigration clearance.

**REFUNDS — LOST TICKETS** — When a passenger loses his ticket, or a portion of his ticket, he will be required to purchase another ticket at the appropriate fare before transportation will be furnished between the points covered by the lost ticket. Requests for refunds of lost tickets must be made in writing to Revenue Accounting, Midway Airlines, 5700 South Cicero, Chicago, IL 60638. There will be a 120 day processing period and a surcharge of \$20.00. Additional restrictions apply. Forms available at Midway's airport ticket counters.

**SCHEDULES AND OPERATIONS** — Midway undertakes to use its best efforts to transport the passenger and baggage with reasonable dispatch. Times shown in timetables or elsewhere are not guaranteed, and form no part of the Contract of Carriage. Midway may, without notice, substitute alternate carriers or aircraft, and may alter or omit stopping places shown on the ticket in case of necessity. Schedules are subject to change without notice. Midway is not responsible or liable for making connections, or for failing to operate any flight according to schedule, or for changing the schedule of any flight. Certain flights will not operate during holiday periods. Contact Midway Airlines for details.

**SECURITY** — For your security, all passengers and their hand-carried items must be inspected in accordance with the government-sponsored security program. Passengers should proceed through security inspection at least 20 minutes prior to departure time, for domestic flights.