



MID-SOUTH AIRLINES

Flight Schedule

Effective APRIL 25, 1982

- **WASHINGTON, D. C.**
- **DANVILLE, VA.**
- **RALEIGH/DURHAM**
- **ROCKY MOUNT/WILSON**
- **PINEHURST/SOUTHERN PINES**
- **RICHMOND**
- **NEW BERN/MOREHEAD CITY**

**N. C. RESERVATIONS - TOLL FREE
1-800-672-4642**

**OTHER STATES - TOLL FREE
1-800-334-9564**

**SOUTHERN PINES
(919) 692-3578**



**MID-SOUTH AIRLINES
POST OFFICE BOX 118
SOUTHERN PINES, NORTH CAROLINA 28387**

TO:



MID-SOUTH AIRLINES

Flight Schedule

Effective APRIL 25, 1982

- **WASHINGTON, D. C.**
- **DANVILLE, VA.**
- **RALEIGH/DURHAM**
- **ROCKY MOUNT/WILSON**
- **PINEHURST/SOUTHERN PINES**
- **RICHMOND**
- **NEW BERN/MOREHEAD CITY**

**N. C. RESERVATIONS - TOLL FREE
1-800-672-4642**

**OTHER STATES - TOLL FREE
1-800-334-9564**

**SOUTHERN PINES
(919) 692-3578**

**PLACE
STAMP
HERE**

GENERAL INFORMATION

JOINT FARES

In addition to our discount fares (Bandit, military and excursion), MSA offers substantial savings on joint fares with other carriers. Joint fares are significantly less than individual segments. Please contact your travel agent or call our toll free reservations number.

AIR FREIGHT

Interline connections with all carriers to any point in the U.S.A. (Member of Air Cargo, Inc.) Rates are as low as \$17.00.

BANDIT SMALL PARCEL SERVICE

Our service guarantees your small parcel to move on a specified MSA flight to any city we serve, for only \$20.00 including tax, as long as the parcel is taken to our ticket counter at least 30 minutes prior to flight departure.

CHECK-IN TIMES

Passengers must check-in at airport counter 30 minutes before scheduled departure time. Reservations not claimed by this deadline are subject to cancellation and resale to standby passengers.

RESPONSIBILITY FOR DEPARTURE, ARRIVALS, CONNECTIONS

MSA will not be responsible for damages resulting from the failure to depart or arrive at times stated in this timetable, nor for errors herein, nor for failure to make connections with planes of other lines or of this Company. Schedules subject to change without notice. Safety is our primary consideration.

HOLIDAY SCHEDULE

Since holiday schedules may differ, please call MSA reservations for this information.

BAGGAGE LIABILITY

Liability for the loss of damage of baggage is limited to \$750.00 per occurrence. MSA does not accept liability for the loss or damage of any item such as jewelry, negotiable instruments, currency, antiques, or other such items.

MSA 102-80

DANVILLE, VA.

DEPART	ARRIVE	FREQ.	FLT. NO.	REMARKS
TO CHICAGO, ILL.				
7:27A	10:50A	X67	171/AA349	DCA
FROM CHICAGO, ILL.				
2:20P	7:58P	X67	UA472/174/156	DCA
TO NEW BERN, N.C.				
8:10P	10:37P	X67	156/157	2
FROM NEW BERN, N.C.				
5:30A	7:17A	X67	171	2
TO NEW YORK, N.Y.				
L7:27A	11:30A	X67	171/NY12	DCA
FROM NEW YORK, N.Y.				
L5:00P	7:58P	X67	EAAS/174/156	DCA
TO PHILADELPHIA, PA.				
7:27A	11:45A	X67	171/AL936	DCA
FROM PHILADELPHIA, PA.				
4:00P	7:58P	X67	AL 988/174/156	DCA
TO PINEHURST/SOUTHERN PINES, N.C.				
8:10P	9:50P	X67	156/175	RDU
FROM PINEHURST/SOUTHERN PINES, N.C.				
6:20A	7:17A	X67	151/171	RDU
TO RALEIGH/DURHAM, N.C.				
8:10P	8:37P	X67	156	0
FROM RALEIGH/DURHAM, N.C.				
6:50A	7:17A	X67	171	0
5:50P	7:58P	X67	155/156	2
TO RICHMOND, VA.				
7:27A	8:10A	X67	171	0
FROM RICHMOND, VA.				
7:15P	7:58P	X67	156	0
TO WASHINGTON, D.C.				
7:27A	9:00A	X67	171	1
FROM WASHINGTON, D.C.				
5:58P	7:58P	X67	174/156	RIC

NEW BERN / MOREHEAD CITY

DEPART	ARRIVE	FREQ.	FLT. NO.	REMARKS
TO ATLANTA, GA.				
5:30A	8:20A	X67	171/EA585	RDU
8:25P	11:00P	X67	175/DL597	RDU
FROM ATLANTA, GA.				
8:14P	10:37P	X67	EA576/157	RDU
TO BOSTON, MASS.				
5:30A	9:50A	X67	171/PI306	RDU
8:05A	12:05P	X67	151/DL204	DCA
2:30P	7:00P	X67	173/EA866	DCA

NEW BERN / MOREHEAD CITY

NEW BERN / MOREHEAD CITY

(Cont'd)

DEPART	ARRIVE	FREQ.	FLT. NO.	REMARKS
FROM BOSTON, MASS.				
9:00A	1:42P	X67	NW291/152	DCA
11:00A	1:45P	X67	PI327/172	RDU
3:46P	8:12P	X67	DL715/174	DCA
6:00P	10:37P	X67	PI347/157	RDU
TO CHICAGO, ILL.				
5:30A	8:53A	X67	171/UA749	RDU
2:00P	5:18P	X67	153/UA724	RDU
2:30P	5:05P	X67	173/PI52	RIC
FROM CHICAGO, ILL.				
7:05A	1:42P	X67	UA220/152	DCA
2:20P	8:12P	X67	UA472/174	DCA
3:00P	8:12P	X67	PI392/174	RIC
TO DALLAS, TEXAS				
5:30A	9:40A	X67	171/PI641	RDU
FROM DALLAS, TEXAS				
CONSULT MID-SOUTH OR YOUR TRAVEL AGENT				
TO DANVILLE, VA.				
5:30A	7:17A	X67	171	2
4:55P	7:58P	X67	155/156	3
FROM DANVILLE, VA.				
8:10P	10:37P	X67	156/157	2
TO LOS ANGELES, CAL.				
5:30A	11:18A	X67	171/DL363	RDU
FROM LOS ANGELES, CAL.				
12:30P	10:37P	X67	DL706/157	RDU
TO MIAMI, FLA.				
5:30A	10:03A	X67	171/PI256/281	RDU
4:55P	10:55P	X67	155/PI289/616	RDU
FROM MIAMI, FLA.				
9:50A	1:45P	X67	PI622/346/172	RDU
12:45P	4:42P	X67	EA894/154	RDU
5:50P	10:37P	X67	PI286/240/157	RDU
TO NEW YORK, N.Y.				
E5:30A	8:19A	X67	171/PI306	RDU
L5:30A	8:17A	X67	171/EA584	RDU
L2:00P	6:10P	X67	153/EA626	RDU
L2:30P	5:10P	X67	173/PI354	RIC
FROM NEW YORK, N.Y.				
L9:00A	1:42P	X67	NY5/152	DCA
E1:00P	4:42P	X67	PI333/154	RDU
L4:50P	8:12P	X67	PI279/174	RIC

X67 - Daily except Saturday & Sunday.

6 - Operates Saturday only. 7 - Operates Sunday only.

Airport Abbreviations: RDU - Raleigh; DCA - Washington, D. C.;

RIC - Richmond; EWN - New Bern; RWI - Rocky Mount/Wilson.

L - LaGuardia; J - Kennedy; E-Newark.

At Raleigh, check in with Eastern Airlines. At Richmond and Washington, check in with Piedmont Airlines.

DEPART	ARRIVE	FREQ.	FLT. NO.	REMARKS
TO PHILADELPHIA, PA.				
5:30A	8:59A	X67	171/AK380	RDU
2:00P	5:59P	X67	153/AK312	RDU
4:55P	9:00P	X6	155/AK388	RDU
FROM PHILADELPHIA, PA.				
9:15A	1:42P	X67	AL964/152	DCA
4:00P	8:12P	X67	AL988/174	DCA
6:40P	10:37P	X67	EA697/157	RDU
TO PINEHURST/SOUTHERN PINES, N.C.				
2:00P	3:17P	X67	153	1
8:25P	9:50P	X67	175	1
FROM PINEHURST/SOUTHERN PINES, N.C.				
6:20A	7:45A	X67	151	1
3:27P	4:42P	X67	154	1
TO RALEIGH/DURHAM, N.C.				
5:30A	6:30A	X67	171	1
7:35A	8:15A	6	181	0
12:55P	1:35P	7	158	0
1:30P	2:10P	6	183	0
2:00P	2:40P	X67	153	0
4:55P	5:35P	X67	155	0
8:25P	9:05P	X67	175	0
FROM RALEIGH/DURHAM, N.C.				
7:00A	7:45A	X67	151	0
12:20P	1:00P	6	182	0
1:05P	1:45P	X67	172	0
2:39P	3:19P	7	159	0
4:02P	4:42P	X67	154	0
5:30P	6:10P	6	184	0
5:50P	8:12P	X67	155/174	RWI
9:35P	10:37P	X67	157	1
TO RICHMOND, VA.				
5:30A	8:10A	X67	171	3
2:30P	3:50P	X67	173	1
4:55P	7:05P	X67	155	2
FROM RICHMOND, VA.				
10:55A	1:45P	X67	172	2
12:25P	1:42P	X67	152	1
6:55P	8:12P	X67	174	1
7:15P	10:37P	X67	156/157	3
TO ROCKY MT./WILSON, N.C.				
5:30A	5:57A	X67	171	0
8:05A	8:32A	X67	151	0
2:30P	2:57P	X67	173	0
4:55P	6:15P	X67	155	1
8:25P	10:00P	X67	175/157	RDU
FROM ROCKY MT./WILSON, N.C.				
6:05A	7:45A	X67	171/151	RDU
11:45A	1:45P	X67	172	0
1:15P	1:42P	X67	152	0
7:45P	8:12P	X67	174	0
10:00P	10:37P	X67	157	0

NEW BERN / MOREHEAD CITY

(Cont'd)

DEPART	ARRIVE	FREQ.	FLT. NO.	REMARKS
TO WASHINGTON, D.C.				
5:30A	9:00A	X67	171	4
8:05A	10:00A	X67	151	1
8:55A	10:15A	7	152	0
2:30P	4:42P	X67	173	2
3:39P	4:59P	7	159	0
FROM WASHINGTON, D.C.				
10:00A	1:45P	X67	172	3
11:15A	12:35P	7	158	0
11:25A	1:42P	X67	152	2
5:58P	8:12P	X67	174	2
5:59P	7:19P	7	160	0

PINEHURST / SOUTHERN PINES

DEPART	ARRIVE	FREQ.	FLT. NO.	REMARKS
TO ATLANTA, GA.				
6:20A	8:20A	X67	151/EA585	RDU
3:27P	5:56P	X67	154/EA549	RDU
FROM ATLANTA, GA.				
12:05P	3:17P	X67	EA356/153	RDU
7:21P	9:50P	X67	DL566/175	RDU
TO BOSTON, MASS.				
6:20A	9:50A	X67	151/PI306	RDU
FROM BOSTON, MASS.				
11:00A	3:17P	X67	PI327/153	RDU
6:00P	9:50P	X67	PI347/175	RDU
TO DALLAS, TEXAS				
6:20A	9:40A	X67	151/PI641	RDU
FROM DALLAS, TEXAS				
10:30A	3:17P	X67	PI640/153	RDU
TO DANVILLE, VA.				
6:20A	7:17A	X67	151/171	RDU
FROM DANVILLE, VA.				
8:10P	9:50P	X67	156/175	RDU
TO LOS ANGELES, CAL.				
6:20A	11:18A	X67	151/DL363	RDU
FROM LOS ANGELES, CAL.				
12:30P	9:50P	X67	DL706/175	RDU
TO MIAMI, FLA.				
6:20A	10:03A	X67	151/PI256/281	RDU
FROM MIAMI, FLA.				
5:50P	9:50P	X67	PI286/240/175	RDU
TO NEW BERN, N.C.				
6:20A	7:45A	X67	151	1
3:27P	4:42P	X67	154	1
FROM NEW BERN, N.C.				
2:00P	3:17P	X67	153	1
8:25P	9:50P	X67	175	1

PINEHURST / SOUTHERN PINES

(Cont'd)

DEPART	ARRIVE	FREQ.	FLT. NO.	REMARKS
TO NEW YORK, N.Y.				
L6:20A	8:17A	X67	151/EA584	RDU
E6:20A	8:19A	X67	151/PI306	RDU
L3:27P	6:10P	X67	154/EA626	RDU
FROM NEW YORK, N.Y.				
J6:54P	9:50P	X67	EA355/175	RDU
TO PHILADELPHIA, PA.				
6:20A	8:59A	X67	151/AK380	RDU
3:27P	5:59P	X67	154/AK312	RDU
FROM PHILADELPHIA, PA.				
6:40P	9:50P	X67	EA697/175	RDU
TO RALEIGH/DURHAM, N.C.				
6:20A	6:40A	X67	151	0
2:20P	2:40P	7	161	0
3:27P	3:47P	X67	154	0
FROM RALEIGH/DURHAM, N.C.				
2:58P	3:17P	X67	153	0
3:30P	3:50P	7	162	0
9:30P	9:50P	X67	175	0
TO RICHMOND, VA.				
6:20A	8:10A	X67	151/171	RDU
FROM RICHMOND, VA.				
12:25P	3:17P	X67	152/153	3
7:15P	9:50P	X67	156/175	RDU
TO ROCKY MT./WILSON, N.C.				
6:20A	8:32A	X67	151	2
3:27P	6:15P	X67	154/155	RDU
FROM ROCKY MT./WILSON, N.C.				
1:15P	3:17P	X67	152/153	2
7:45P	9:50P	X67	174/175	2
TO WASHINGTON, D.C.				
6:20A	9:00A	X67	151/171	RDU
6:20A	10:00A	X67	151	3
FROM WASHINGTON, D.C.				
11:25A	3:17P	X67	152/153	4
5:58P	9:50P	X67	174/175	4

RALEIGH / DURHAM, N. C.

DEPART	ARRIVE	FREQ.	FLT. NO.	REMARKS
TO DANVILLE, VA.				
6:50A	7:17A	X67	171	0
5:50P	7:58P	X67	155/156	2
FROM DANVILLE, VA.				
8:10P	8:37P	X67	156	0



MID-SOUTH AIRLINES

RALEIGH / DURHAM, N. C.

(Cont'd)

DEPART	ARRIVE	FREQ.	FLT. NO.	REMARKS
--------	--------	-------	----------	---------

TO NEW BERN/MOREHEAD CITY, N.C.

7:00A	7:45A	X67	151	0
12:20P	1:00P	6	182	0
1:05P	1:45P	X67	172	0
2:39P	3:19P	7	159	0
4:02P	4:42P	X67	154	0
5:30P	6:10P	6	184	0
5:50P	8:12P	X67	155/174	RWI
9:35P	10:37P	X67	157	1

FROM NEW BERN/MOREHEAD CITY, N.C.

5:30A	6:30A	X67	171	1
7:35A	8:15A	6	181	0
12:55P	1:35P	7	158	0
1:30P	2:10P	6	183	0
2:00P	2:40P	X67	153	0
4:55P	5:35P	X67	155	0
8:25P	9:05P	X67	175	0

TO PINEHURST/SOUTHERN PINES, N.C.

2:58P	3:17P	X67	153	0
3:30P	3:50P	7	162	0
9:30P	9:50P	X67	175	0

FROM PINEHURST/SOUTHERN PINES, N.C.

6:20A	6:40A	X67	151	0
2:20P	2:40P	7	161	0
3:27P	3:47P	X67	154	0

TO RICHMOND, VA.

6:50A	8:10A	X67	171	1
1:05P	3:50P	X67	172/173	2
5:50P	7:05P	X67	155	1

FROM RICHMOND, VA.

10:55A	12:10P	X67	172	1
12:25P	2:40P	X67	152/153	2
6:55P	9:05P	X67	174/175	2
7:15P	8:37P	X67	156	1

TO ROCKY MT./WILSON, N.C.

7:00A	8:32A	X67	151	1
1:05P	2:57P	X67	172/173	1
5:50P	6:15P	X67	155	0
9:35P	10:00P	X67	157	0

FROM ROCKY MT./WILSON, N.C.

6:05A	6:30A	X67	171	0
11:45A	12:10P	X67	172	0
1:15P	2:40P	X67	152/153	1
6:25P	8:37P	X67	155/156	2
7:45P	9:05P	X67	174/175	1

TO WASHINGTON, D.C.

6:50A	9:00A	X67	171	2
7:00A	10:00A	X67	151	2
1:05P	4:42P	X67	172/173	3
2:39P	4:59P	7	159	1

FROM WASHINGTON, D.C.

10:00A	12:10P	X67	172	2
11:15A	1:35P	7	158	1
11:25A	2:40P	X67	152/153	3
5:58P	8:37P	X67	174/156	RIC
5:58P	9:05P	X67	174/175	3

RICHMOND, VA.

DEPART	ARRIVE	FREQ.	FLT. NO.	REMARKS
--------	--------	-------	----------	---------

TO DANVILLE, VA.

7:15P	7:58P	X67	156	0
-------	-------	-----	-----	---

FROM DANVILLE, VA.

7:27A	8:10A	X67	171	0
-------	-------	-----	-----	---

TO NEW BERN, N.C.

10:55A	1:45P	X67	172	2
12:25P	1:42P	X67	152	1
6:55P	8:12P	X67	174	1
7:15P	10:37P	X67	156/157	3

FROM NEW BERN, N.C.

5:30A	8:10A	X67	171	3
2:30P	3:50P	X67	173	1
4:55P	7:05P	X67	155	2

TO PINEHURST/SOUTHERN PINES, N.C.

12:25P	3:17P	X67	152/153	3
7:15P	9:50P	X67	156/175	RDU

FROM PINEHURST/SOUTHERN PINES, N.C.

6:20A	8:10A	X67	151/171	RDU
-------	-------	-----	---------	-----

TO RALEIGH/DURHAM, N.C.

10:55A	12:10A	X67	172	1
12:25P	2:40P	X67	152/153	2
6:55P	9:05P	X67	174/175	2
7:15P	8:37P	X67	156	1

FROM RALEIGH/DURHAM, N.C.

6:50A	8:10A	X67	171	1
1:05P	3:50P	X67	172/173	2
5:50P	7:05P	X67	155	1

TO ROCKY MT./WILSON, N.C.

10:55A	11:35A	X67	172	0
12:25P	1:05P	X67	152	0
6:55P	7:35P	X67	174	0
7:15P	10:00P	X67	156/157	2

FROM ROCKY MT./WILSON, N.C.

6:05A	8:10A	X67	171	2
8:45A	12:05A	X67	151/152	1
3:10P	3:50P	X67	173	0
6:25P	7:05P	X67	155	0

TO WASHINGTON, D.C.

8:19A	9:00A	X67	171	0
4:02P	4:42P	X67	173	0

FROM WASHINGTON, D.C.

10:00A	10:40A	X67	172	0
11:25A	12:05P	X67	152	0
5:58P	6:38P	X67	174	0

MID-SOUTH AIRLINES

ROCKY MOUNT / WILSON, N. C.

DEPART	ARRIVE	FREQ.	FLT. NO.	REMARKS
TO ATLANTA, GA.				
6:05A	8:20A	X67	171/EA585	RDU
FROM ATLANTA, GA.				
3:22P	6:15P	X67	EA626/155	RDU
8:14P	10:00P	X67	EA576/157	RDU
TO BOSTON, MASS.				
6:05A	9:50A	X67	171/PI306	RDU
8:45A	12:05P	X67	151/DL204	DCA
3:10P	7:00P	X67	173/EA866	DCA
FROM BOSTON, MASS.				
7:30A	11:35A	X67	NY51/172	DCA
3:46P	7:35P	X67	DL715/174	DCA
TO CHICAGO, ILL.				
6:05A	8:53A	X67	171/UA749	RDU
1:15P	5:18P	X67	152/UA724	RDU
3:10P	5:05P	X67	173/PI52	RIC
FROM CHICAGO, ILL.				
3:00P	7:35P	X67	PI392/174	RIC
5:00P	10:00P	X67	UA670/157	RDU
TO DALLAS, TEXAS				
6:05A	9:40A	X67	171/P1641	RDU
FROM DALLAS, TEXAS				
CONSULT MID-SOUTH OR YOUR TRAVEL AGENT				
TO DANVILLE, VA.				
6:05A	7:17A	X67	171	1
6:25P	7:58P	X67	155/156	1
FROM DANVILLE, VA.				
CONSULT MID-SOUTH OR YOUR TRAVEL AGENT				
TO LOS ANGELES, CAL.				
6:05A	11:18A	X67	171/DL363	RDU
3:10P	9:30P	X67	173/WA505	DCA
FROM LOS ANGELES, CAL.				
8:00A	7:35P	X67	WA566/174	DCA
TO MIAMI, FLA.				
6:05A	10:03A	X67	171/PI256/281	RDU
11:45A	5:03P	X67	172/PI327/285	RDU
FROM MIAMI, FLA.				
9:50A	2:57P	X67	PI622/346/172	RDU
5:50P	10:00P	X67	PI286/240/157	RDU
TO NEW BERN, N.C.				
6:05A	7:45A	X67	171/151	RDU
11:45A	1:45P	X67	172	1
1:15P	1:42P	X67	152	0
7:45P	8:12P	X67	174	0
10:10P	10:37P	X67	157	0
FROM NEW BERN, N.C.				
5:30A	5:57A	X67	171	0
8:05A	8:32A	X67	151	0
2:30P	2:57P	X67	173	0
4:55P	6:15P	X67	155	1
8:25P	10:00P	X67	175/157	RDU

ROCKY MOUNT / WILSON, N. C.

(Cont'd)

DEPART	ARRIVE	FREQ.	FLT. NO.	REMARKS
TO NEW YORK, N.Y.				
L8:45A	12:00N	X67	151/NY20	DCA
L3:10P	7:30P	X67	173/NY34	DCA
FROM NEW YORK, N.Y.				
L7:00A	11:35A	X67	NY1/172	DCA
L9:00A	1:05P	X67	NY5/152	DCA
E9:40A	1:05P	X67	NY303/152	DCA
TO PHILADELPHIA, PA.				
6:05A	8:59A	X67	171/AK380	RDU
3:10P	7:05P	X67	173/AK349	DCA
FROM PHILADELPHIA, PA.				
8:40A	11:35A	X67	AK381/172	DCA
TO PINEHURST/SOUTHERN PINES, N.C.				
1:15P	3:17P	X67	152/153	2
7:45P	9:50P	X67	174/175	2
FROM PINEHURST/SOUTHERN PINES, N.C.				
6:20A	8:32A	X67	151	2
3:27P	6:15P	X67	154/155	RDU
TO RALEIGH, N.C.				
6:05A	6:30A	X67	171	0
11:45A	12:10P	X67	172	0
1:15P	2:40P	X67	152/153	1
6:25P	8:37P	X67	155/156	2
7:45P	9:05P	X67	174/175	1
FROM RALEIGH, N.C.				
7:00A	8:32A	X67	151	1
1:05P	2:57P	X67	172/173	1
5:50P	6:15P	X67	155	0
9:35P	10:00P	X67	157	0
TO RICHMOND, VA.				
6:05A	8:10A	X67	171	2
8:45A	12:05P	X67	151/152	1
3:10P	3:50P	X67	173	0
6:25P	7:05P	X67	155	0
FROM RICHMOND, VA.				
10:55A	11:35A	X67	172	0
12:25P	1:05P	X67	152	0
6:55P	7:35P	X67	174	0
7:15P	10:00P	X67	156/157	2
TO WASHINGTON, D.C.				
6:05A	9:00A	X67	171	3
8:45A	10:00A	X67	151	0
3:10P	4:42P	X67	173	1
FROM WASHINGTON, D.C.				
10:00A	11:35A	X67	172	1
11:25A	1:05P	X67	152	1
5:58P	7:35P	X67	174	1

MID-SOUTH

AIRLINES

WASHINGTON, D. C.

DEPART	ARRIVE	FREQ.	FLT. NO.	REMARKS
TO DANVILLE, VA.				
5:58P	7:58P	X67	174/156	RIC
FROM DANVILLE, VA.				
7:27A	9:00A	X67	171	1
TO NEW BERN/MOREHEAD CITY, N.C.				
10:00A	1:45P	X67	172	3
11:15A	12:35P	7	158	0
11:25A	1:42P	X67	152	2
5:58P	8:12P	X67	174	2
5:59P	7:19P	7	160	0
FROM NEW BERN/MOREHEAD CITY, N.C.				
5:30A	9:00A	X67	171	4
8:05A	10:00A	X67	151	1
8:55A	10:15A	7	152	0
2:30P	4:42P	X67	173	2
3:39P	4:59P	7	159	0
TO PINEHURST/SOUTHERN PINES, N.C.				
11:25A	3:17P	X67	152/153	4
5:58P	9:50P	X67	174/175	4
FROM PINEHURST/SOUTHERN PINES, N.C.				
6:20A	9:00A	X67	151/171	RDU
6:20A	10:00A	X67	151	3
TO RALEIGH, N.C.				
10:00A	12:10P	X67	172	2
11:15A	1:35P	7	158	1
11:25A	2:40P	X67	152/153	3
5:58P	8:37P	X67	174/156	RIC
5:58P	9:05P	X67	174/175	3
FROM RALEIGH, N.C.				
6:50A	9:00A	X67	171	2
7:00A	10:00A	X67	151	2
1:05P	4:42P	X67	172/173	3
2:39P	4:59P	7	159	1
TO RICHMOND, VA.				
10:00A	10:40A	X67	172	0
11:25A	12:05P	X67	152	0
5:58P	6:38P	X67	174	0
FROM RICHMOND, VA.				
8:19A	9:00A	X67	171	0
4:02P	4:42P	X67	173	0
TO ROCKY MT./WILSON, N.C.				
10:00A	11:35A	X67	172	1
11:25A	1:05P	X67	152	1
5:58P	7:35P	X67	174	1
FROM ROCKY MT./WILSON, N.C.				
6:05A	9:00A	X67	171	3
8:45A	10:00A	X67	151	0
3:10P	4:42P	X67	173	1

ADD MY NAME TO THE MAILING LIST:

Mid-South Airlines maintains an extensive list of individuals and corporations receiving copies of our system timetables. If you wish to be included on our mailing list, and receive a copy of our latest schedule free of charge, complete this coupon and mail.

Please send me a schedule and include me on your mailing list:

Name _____

Company _____

Title _____

Mailing Address _____

City _____

State _____

Zip Code _____

(Detach and Mail Today)

**MID-SOUTH
AIRLINES**



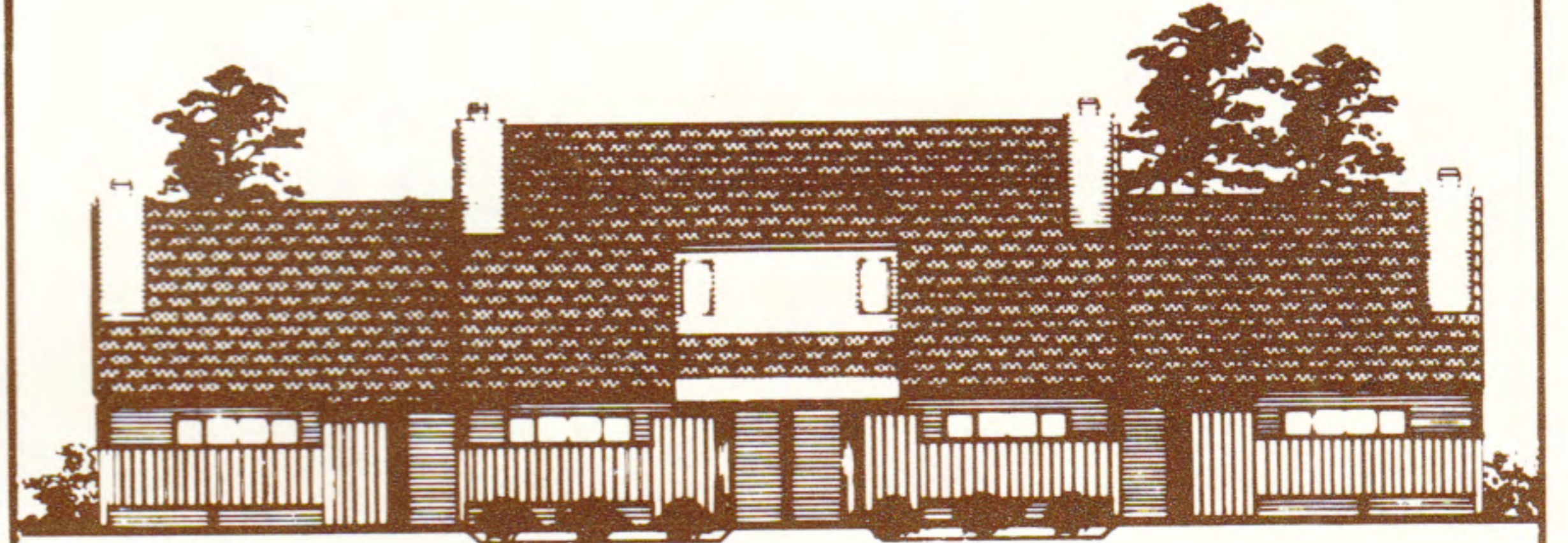
PLACE
STAMP
HERE



MID-SOUTH AIRLINES
POST OFFICE BOX 118
SOUTHERN PINES, NORTH CAROLINA 28387

Fly Mid-South To Your Plantation

in River Bend, N.C.



Plantation Landing, an enchanting Townhouse community situated near historic New Bern, the Colonial Capital of North Carolina. Located adjacent to:

- full service marina
- an 18 hole golf course
- lighted tennis courts
- racquet and swim club
- swimming pools
- and all the refinements of Country Club living.

It's all for you at
Plantation Landing

for information call or write,
Omni Properties, Ltd.
Homestead Square
P.O. Box 5052
New Bern, NC 28560
(919) 638-1797