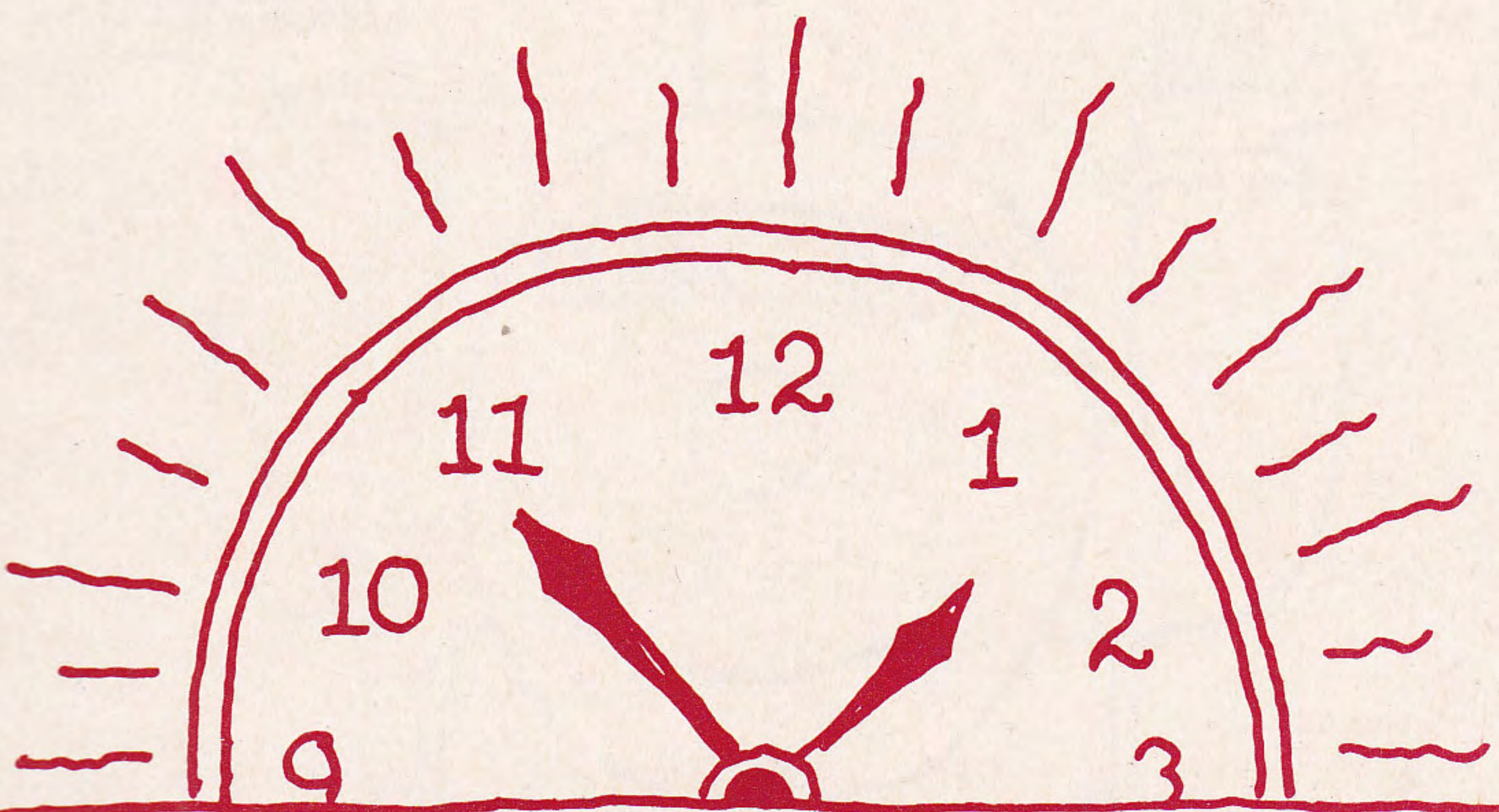


**SYSTEM TIMETABLE**

**NEW YORK AIR**

**SCHEDULE EFFECTIVE**

**1-7-86**





**NEW YORK AIR**

**YOU'VE GOT  
OUR NUMBER.**

**RESERVATIONS**

Boston .....	(617) 569-8400
Cincinnati .....	(513) 241-5255
Cleveland .....	(216) 589-5799
Detroit .....	(313) 961-7272
Ft. Lauderdale .....	(305) 761-7833
Hartford .....	(203) 560-1185
Jacksonville .....	(904) 358-7799
New Orleans .....	(504) 523-7816
New York City .....	(212) 839-9533
	(718) 565-1100
Nassau/Suffolk .....	(516) 242-1000
Westchester .....	(914) 681-0001
Newark .....	(201) 623-0770
Orlando .....	(305) 295-6000
Rochester .....	(800) 221-9300
Springfield .....	(413) 733-6111
Tampa .....	(813) 885-2181
Washington .....	(202) 588-2300
Nationwide .....	(800) 221-9300
New York Air Connection .....	(800) 221-9300

**CITY TICKET  
OFFICES**

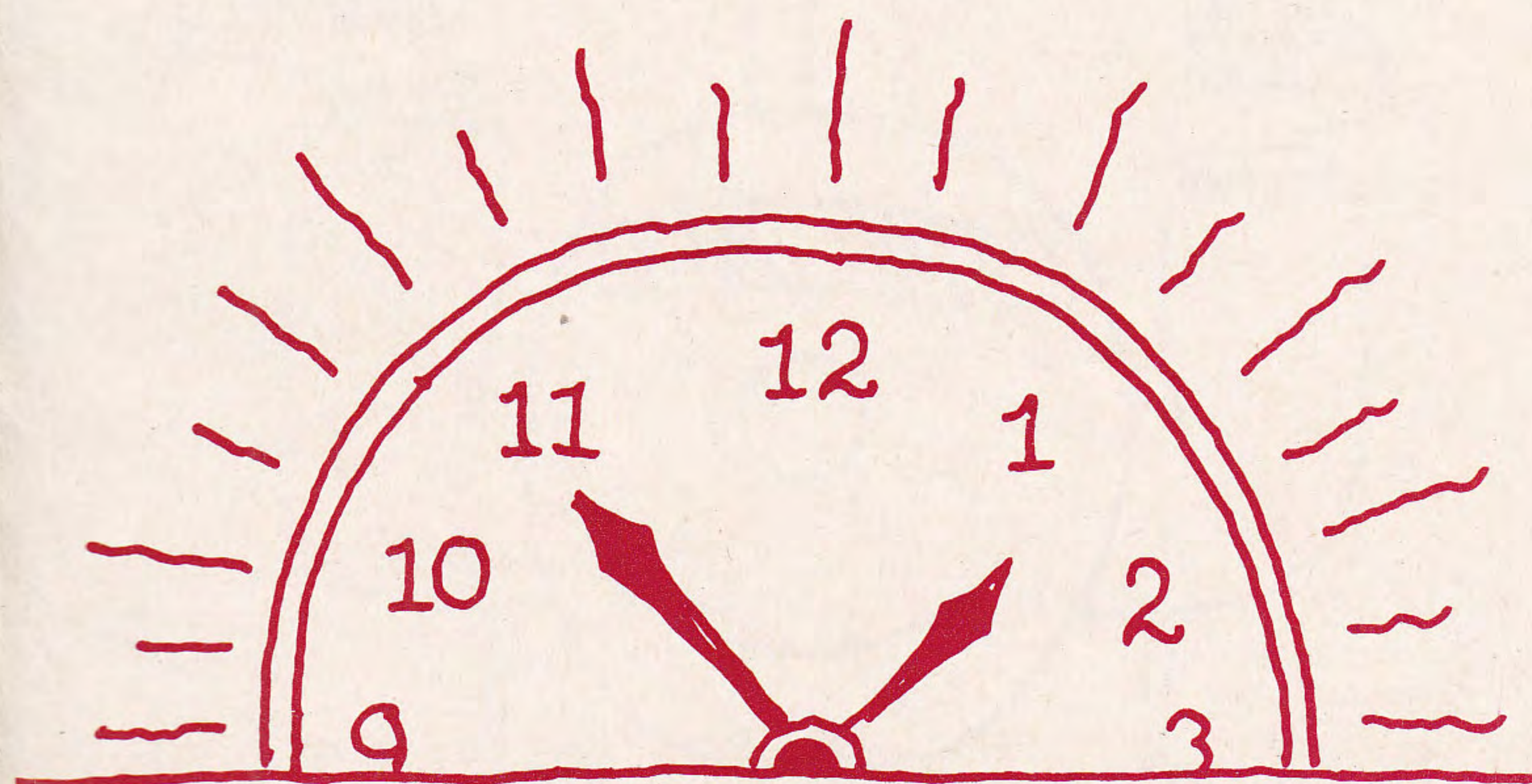
Boston: 155 Federal Street  
New York City: 1 World Trade Center Lobby  
and 100 East 42nd Street  
New Orleans: 235 O'Keefe Avenue  
Rochester: Midtown Plaza  
Washington: 1830 K Street N.W.

**SYSTEM TIMETABLE**

**NEW YORK AIR**

**SCHEDULE EFFECTIVE**

**1-7-86**



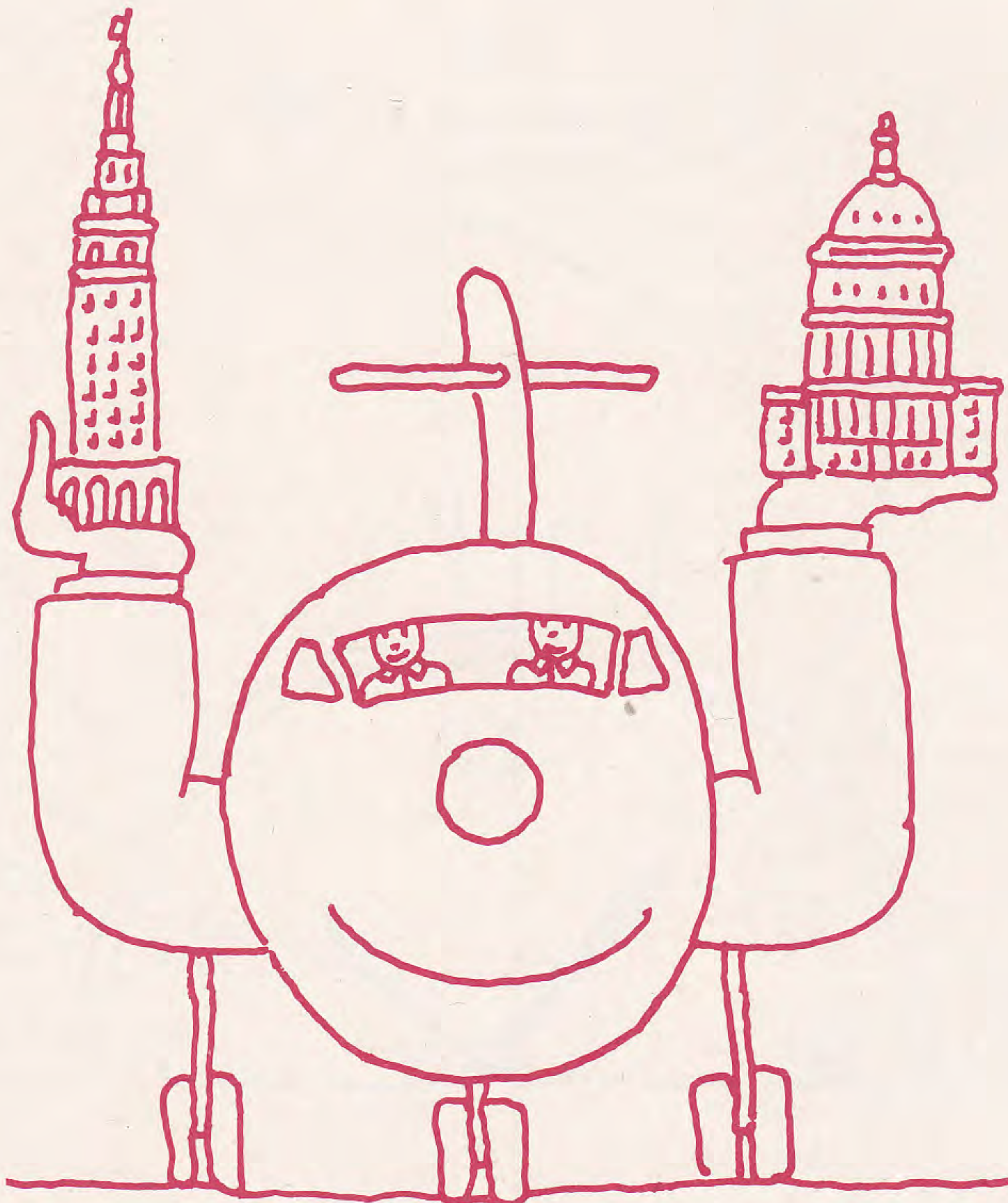


# WASHINGTON, D.C. IS JUSTA HOPKINS AWAY FROM CLEVELAND

Starting January 7th, New York Air takes off three times every weekday with nonstop service from Washington Dulles to Cleveland Hopkins International Airport.

The service is new — the way we serve you isn't. Now New York Air can fly you from Cleveland to Washington for just \$29. And Cleveland to Florida for \$99. And that's for every seat, every flight, every day through February 12.

So not only have we added Cleveland to our map, but also Washington, D.C. and Florida are just a Hopkins away.



Leave	Arrive	Freq.	Flight No.	Stops/Via	Leave	Arrive	Freq.	Flight No.	Stops/Via
<b>From ALLENTOWN, PA</b>					<b>From BOSTON</b>				
Reservations (800) 221-9300					Reservations (617) 569-8400				
<b>To Washington/National</b>					<b>To Charlottesville, VA</b>				
805a	900a	ExSaSu	921	0	640a	905a	ExSaSu	87/951	IAD
455p	545p	ExSa	925	0	845a	1110a	ExSu	73/953	IAD
705p	800p	ExSaSu	927	0	1215p	300p	ExSu	75/955	IAD
					135p	400p	ExSa	77/957	IAD
					610p	845p	ExSa	81/968	IAD
<b>From BINGHAMTON, NY</b>					<b>Cincinnati</b>				
Reservations (800) 221-9300					945a 130p Daily 89/135 IAD				
<b>To Ft. Lauderdale</b>					<b>Cleveland</b>				
700a	1105a	ExSaSu	900/143	IAD	1215p	350p	Daily	75	1
905a	125p	ExSaSu	911/73	IAD	610p	1015p	ExSa	81/641	IAD
650p	1210a	ExSaSu	915/137	IAD	<b>Denver</b>				
<b>Jacksonville</b>					850a	1110a	Daily	CO15	0
700a	1135a	ExSaSu	900/141	IAD	E-1/17/86				
<b>New Orleans</b>					855a	1115a	Daily	CO15	0
700a	1115a	ExSaSu	900/381	IAD	D-1/16/86				
650p	1125p	ExSaSu	915/385	IAD	235p	505p	ExSa	CO93	0
<b>Orlando</b>					E-1/17/86				
700a	1105a	ExSaSu	900/203	IAD	240p	500p	Daily	CO93	0
<b>Tampa</b>					D-1/16/86				
700a	1110a	ExSaSu	900/87	IAD	505p	725p	Daily	CO91	0
905a	115p	ExSaSu	911/145	IAD	D-1/16/86				
<b>Washington/Dulles</b>					505p	735p	Daily	CO91	0
700a	810a	ExSaSu	900	0	E-1/17/86				
905a	1015a	ExSaSu	911	0	<b>Detroit</b>				
330p	440p	ExSa	913	0	810a	1215p	Daily	253/320	EWR
650p	759p	ExSaSu	915	0	1245p	435p	ExSa	259/467	EWR
<b>Washington/National</b>					300p	625p	Daily	273/465	EWR
225p	335p	ExSaSu	917	0	515p	850p	Su Only	277/469	EWR
					730p	1055p	ExSa	269	1
					<b>Ft. Lauderdale</b>				
					640a	1105a	ExSu	87/143	IAD
					845a	125p	Daily	73	1
					135p	615p	Daily	77/721	IAD
					705p	1210a	ExSa	83/137	IAD

Continued next page

Free Cocktails Served on All Peak Flights. For Snack Service, Please Consult Your Travel Agent or New York Air.

BOS-Boston EWR-Newark  
LGA-LaGuardia IAD-Washington (Dulles)  
CO-Continental Airlines



# NEW YORK AIR

Leave	Arrive	Freq.	Flight No.	Stops/Via	Leave	Arrive	Freq.	Flight No.	Stops/Via
<b>From</b>					<b>New York/LaGuardia</b>				
<b>BOSTON</b>					(cont'd)				
<b>(Cont'd)</b>									
<b>Houston/Intercontinental</b>					<b>New York/Newark</b>				
900a	205p	Daily	105/CO125	LGA	650a	800a	ExSu	251	0
945a	220p	ExSa	89/CO199	IAD	810a	920a	Daily	253	0
1055a	205p	Daily	CO177	0	1245p	155p	ExSa	259	0
135p	705p	Daily	77/CO197	IAD	300p	415p	Daily	273	0
		D-1/16/86			515p	630p	SuOnly	277	0
135p	715p	Daily	77/CO197	IAD	730p	845p	ExSa	269	0
		E-1/17/86			<b>Norfolk, VA</b>				
415p	710p	Daily	CO139	0	640a	930a	ExSaSu	87/901	IAD
430p	935p	ExSa	79/CO193	IAD	845a	1210p	SaOnly	73/970	IAD
600p	1045p	Daily	123/CO129	LGA	1215p	310p	ExSaSu	75/903	IAD
		D-1/16/86			430p	745p	ExSa	79/907	IAD
600p	1050p	ExSa	123/CO129	LGA	<b>Orlando</b>				
		E-1/17/86			640a	1105a	ExSu	87/203	IAD
<b>Jacksonville</b>					810a	1245p	Daily	253	1
640a	1135a	ExSu	87/141	IAD	135p	600p	Daily	77/642	IAD
135p	535p	Daily	77/147	IAD	<b>Tampa</b>				
<b>Manassas, VA</b>					640a	1110a	ExSu	87	1
430p	800p	ExSa	79/906	IAD	650a	1105a	ExSu	251/771	EWR
<b>New Orleans</b>					845a	115p	Daily	73/145	IAD
650a	1055a	ExSu	251	1	135p	610p	Daily	77	1
135p	510p	Daily	77/205	IAD	<b>Washington/Dulles</b>				
300p	710p	Daily	273	1	640a	810a	ExSu	87	0
705p	1125p	ExSa	83/385	IAD	700a	1010a	ExSu	101/145	LGA
<b>Newport News, VA</b>					845a	1015a	Daily	73	0
845a	1140a	SaOnly	73/970	IAD	945a	1115a	Daily	89	0
1215p	320p	ExSa	75/945	IAD	1215p	135p	Daily	75	0
430p	815p	ExSa	79/907	IAD	135p	305p	Daily	77	0
<b>New York/LaGuardia</b>					430p	600p	Daily	79	0
700a	800a	ExSu	101	0	500p	730p	ExSa	121/149	LGA
800a	900a	ExSu	103	0	610p	740p	ExSa	81	0
900a	1000a	Daily	105	0	705p	840p	ExSa	83	0
1000a	1100a	Daily	107	0	959p	1125p	ExSa	85	0
1100a	1200n	ExSa	109	0	<b>Washington/National</b>				
100p	159p	Daily	113	0	700a	930a	ExSu	101/3	LGA
300p	359p	ExSa	117	0	705a	840a	ExSaSu	51	0
400p	459p	Daily	119	0	800a	1030a	ExSu	103/5	LGA
500p	600p	ExSa	121	0	900a	1130a	Daily	105/7	LGA
600p	700p	Daily	123	0	1000a	1230p	ExSa	107/9	LGA
700p	800p	ExSa	125	0					

Free Cocktails Served on All Peak Flights. For Snack Service, Please Consult Your Travel Agent or New York Air.

BOS-Boston  
LGA-LaGuardia  
CO-Continental Airlines  
EWR-Newark  
IAD-Washington (Dulles)

# NEW YORK AIR

Leave	Arrive	Freq.	Flight No.	Stops/Via	Leave	Arrive	Freq.	Flight No.	Stops/Via
<b>Washington/National</b>					<b>New York/LaGuardia</b>				
(cont'd)									
1100a	130p	ExSa	109/11	LGA	930a	100p	ExSu	952/138	IAD
1240p	159p	ExSu	55	0	120p	345p	ExSu	954/136	IAD
1245p	325p	ExSa	259/305	EWR	340p	550p	ExSu	956/140	IAD
100p	330p	Daily	113/23	LGA	545p	735p	ExSa	967/146	IAD
215p	359p	Daily	61	0	<b>New York/White Plains</b>				
300p	530p	ExSa	117/27	LGA	120p	430p	ExSaSu	954/386	IAD
400p	630p	Daily	119/29	LGA	<b>Orlando</b>				
550p	725p	ExSa	65	0	655a	1105a	ExSaSu	950/203	IAD
600p	830p	Daily	123/33	LGA	930a	1245p	SaOnly	952/661	IAD
700p	930p	ExSa	125/35	LGA	120p	600p	ExSu	954/642	IAD
835p	1000p	ExSa	67	0	<b>Rochester, NY</b>				
<b>From</b>									
<b>CHARLOTTESVILLE,</b>									
<b>VA</b>									
Reservations (800) 221-9300									
<b>To</b>									
<b>Boston</b>									
930a	1215p	ExSu	952/74	IAD	930a	1255p	ExSu	952/202	IAD
120p	400p	ExSu	954/86	IAD	120p	335p	ExSu	954/204	IAD
340p	620p	ExSu	956/84	IAD	<b>Tampa</b>				
415p	700p	ExSa	958/76	IAD	655a	1110a	ExSaSu	950/87	IAD
545p	925p	ExSa	967/80	IAD	930a	115p	ExSu	952/145	IAD
<b>Cincinnati</b>					120p	610p	ExSu	954/77	IAD
415p	730p	ExSa	958/651	IAD	<b>Washington/Dulles</b>				
<b>Cleveland</b>					655a	725a	ExSaSu	950	0
655a	945a	ExSaSu	950/151	IAD	930a	1000a	ExSu	952	0
120p	350p	ExSu	954/75	IAD	120p	150p	ExSu	954	0
<b>Ft. Lauderdale</b>					340p	410p	ExSu	956	0
655a	1105a	ExSaSu	950/143	IAD	415p	445p	ExSa	958	0
930a	125p	ExSu	952/73	IAD	545p	615p	ExSa	967	0
120p	615p	ExSu	954/721	IAD	<b>From</b>				
<b>Hartford/Springfield</b>					<b>CINCINNATI</b>				
655a	950a	ExSaSu	950/150	IAD	Reservations (513) 241-5255				
340p	605p	ExSaSu	956/158	IAD	<b>To</b>				
<b>Jacksonville</b>					<b>Boston</b>				
120p	535p	ExSu	954/147	IAD	155p	620p	Daily	642/84	IAD
<b>New Orleans</b>					800p	1055p	ExSa	210/82	IAD
120p	510p	ExSu	954/205	IAD	<b>Charlottesville, VA</b>				
					155p	400p	ExSa	642/957	IAD
					<b>Ft. Lauderdale</b>				
					155p	615p	Daily	642/721	IAD
					800p	1210a	ExSa	210/137	IAD

Free Cocktails Served on All Peak Flights. For Snack Service, Please Consult Your Travel Agent or New York Air.

BOS-Boston  
LGA-LaGuardia  
CO-Continental Airlines  
EWR-Newark  
IAD-Washington (Dulles)

Continued next page



# NEW YORK AIR

Leave	Arrive	Freq.	Flight No.	Stops/Via	Leave	Arrive	Freq.	Flight No.	Stops/Via
<b>From</b>					<b>Hartford/Springfield</b>				
<b>CINCINNATI</b>					650a 950a ExSu 150 1				
<b>(Cont'd)</b>					1010a 125p Daily 138/154 IAD				
<b>Hartford/Springfield</b>					<b>Jacksonville</b>				
155p	605p	ExSa	642/158	IAD	650a	1135a	ExSu	150/141	IAD
800p	1045p	ExSa	210/160	IAD	<b>New Orleans</b>				
<b>Jacksonville</b>					650a 1115a ExSu 150/381 IAD				
155p	535p	Daily	642/147	IAD	<b>Newport News, VA</b>				
<b>New Orleans</b>					650a 915a ExSaSu 150/941 IAD				
155p	510p	Daily	642/205	IAD	420p	815p	ExSa	640/907	IAD
800p	1125p	ExSa	210/385	IAD	<b>New York/LaGuardia</b>				
<b>New York/LaGuardia</b>					1010a 100p Daily 138 1				
155p	550p	Daily	642/140	IAD	420p	735p	ExSa	640/146	IAD
800p	1030p	ExSa	210/142	IAD	<b>Norfolk, VA</b>				
<b>New York/White Plains</b>					650a 930a ExSaSu 150/901 IAD				
800p	1040p	ExSa	210/388	IAD	420p	745p	ExSa	640/907	IAD
<b>Orlando</b>					<b>Orlando</b>				
155p	600p	Daily	642	1	650a	1105a	ExSu	150/203	IAD
<b>Rochester, NY</b>					<b>Rochester, NY</b>				
800p	1050p	ExSa	210	1	1010a	1255p	ExSu	138/202	IAD
<b>Tampa</b>					<b>Tampa</b>				
155p	610p	Daily	642/77	IAD	650a	1110a	ExSu	150/87	IAD
<b>Washington/Dulles</b>					<b>Washington/Dulles</b>				
155p	305p	Daily	642	0	650a	800a	ExSu	150	0
800p	910p	ExSa	210	0	1010a	1120a	Daily	138	0
<b>From</b>					<b>Washington/Dulles</b>				
<b>CLEVELAND</b>					420p 540p ExSa 640 0				
<b>Reservations (216) 589-5799</b>					<b>Rochester, NY</b>				
<b>To</b>					820a 335p Daily CO384/204 IAD				
<b>Boston</b>					D-1/16/86				
1010a	110p	Daily	138/90	IAD	820a	335p	ExSu	CO384/204	IAD
<b>Charlottesville, VA</b>					E-1/17/86				
650a	905a	ExSaSu	150/951	IAD	325p	1040p	ExSa	CO382/388	IAD
<b>Ft. Lauderdale</b>					<b>Rochester, NY</b>				
650a	1105a	ExSu	150/143	IAD	820a	335p	Daily	CO384/204	IAD

Free Cocktails Served on All Peak Flights. For Snack Service, Please Consult Your Travel Agent or New York Air.

BOS-Boston EWR-Newark  
LGA-LaGuardia IAD-Washington (Dulles)  
CO-Continental Airlines

# NEW YORK AIR

Leave	Arrive	Freq.	Flight No.	Stops/Via	Leave	Arrive	Freq.	Flight No.	Stops/Via
<b>From</b>					<b>Washington/Dulles</b>				
<b>DENVER</b>					820a 140p Daily CO384 0				
<b>Reservations (303) 398-3000</b>					D-1/16/86				
<b>To</b>					820a 145p ExSu CO384 0				
<b>Boston</b>					E-1/17/86				
820a	155p	ExSu	CO92	0	1055a	420p	Daily	CO380	0
820a	200p	Daily	CO92	0	325p	845p	Daily	CO382	0
1040a	420p	Daily	CO96	0	640p	1150p	ExSa	CO388	0
1045a	425p	Daily	CO96	0	<b>Washington/National</b>				
330p	905p	Daily	CO10	0	1220a	759a	ExSaSu	CO316/301	EWR
<b>New York/LaGuardia</b>					810a	325p	ExSa	CO312/305	EWR
1105a	429p	Daily	CO462	0	1105a	630p	Daily	CO462/29	LGA
330p	905p	Daily	CO464	0	330p	1050p	ExSa	CO464/37	LGA
630p	1155p	Daily	CO466	0	<b>From</b>				
<b>New York/Newark</b>					<b>DETROIT</b>				
1220a	545a	ExSu	CO316	0	<b>Reservations (313) 961-7272</b>				
810a	140p	Daily	CO312	0	<b>To</b>				
1050a	420p	Daily	CO310	0	<b>Boston</b>				
1100a	415p	Daily	CO310	0	915a	1215p	ExSu	252	1
115p	645p	Daily	CO308	0	1250p	430p	SuOnly	478/272	EWR
335p	900p	Daily	CO314	0	1250p	530p	ExSa	478/262	EWR
640p	1155p	Daily	CO318	0	710p	1015p	ExSa	264	1
<b>New York/White Plains</b>					<b>New York/Newark</b>				
820a	430p	ExSa	CO384/386	IAD	655a	830a	ExSu	303	0
820a	430p	ExSaSu	CO384/386	IAD	915a	1045a	Daily	252	0
325p	1040p	ExSa	CO382/388	IAD	1250p	220p	Daily	478	0
<b>Rochester, NY</b>					510p	640p	Daily	474	0
820a	335p	Daily	CO384/204	IAD	710p	840p	ExSa	264	0
820a	335p	ExSu	CO384/204	IAD	915p	1045p	ExSa	476	0
325p	1050p	ExSa	CO382/210	IAD	<b>Orlando</b>				
<b>Washington/Dulles</b>					655a 1245p ExSu 303/253 EWR				
650a	800a	ExSu	150	0	<b>Washington/National</b>				
1010a	1120a	Daily	138	0	655a	1015a	ExSu	303	1
420p	540p	ExSa	640	0	915a	1259p	ExSaSu	252/323	EWR
<b>Free Cocktails Served on All Peak Flights. For Snack Service, Please Consult Your Travel Agent or New York Air.</b>					1250p	500p	ExSaSu	478/307	EWR
<b>BOS-Boston EWR-Newark</b>					1250p	505p	SuOnly	478/317	EWR
<b>LGA-LaGuardia IAD-Washington (Dulles)</b>					510p	800p	ExSa	474/315	EWR
<b>CO-Continental Airlines</b>									

Free Cocktails Served on All Peak Flights. For Snack Service, Please Consult Your Travel Agent or New York Air.

BOS-Boston EWR-Newark  
LGA-LaGuardia IAD-Washington (Dulles)  
CO-Continental Airlines



# NEW YORK AIR

Leave	Arrive	Freq.	Flight No.	Stops/Via	Leave	Arrive	Freq.	Flight No.	Stops/Via
<b>From</b>					<b>Boston</b>				
<b>ELKINS,</b>					845a	110p	ExSu	90	1
<b>WV</b>					1145a	400p	Daily	752/86	IAD
Reservations (800) 221-9300					155p	620p	Daily	140/84	IAD
					640p	1055p	ExSa	82	1
<b>To</b>					<b>Charlottesville, VA</b>				
<b>Boston</b>					1145a	300p	ExSu	752/955	IAD
115p	400p	ExSa	965/86	IAD	1145a	400p	ExSa	752/957	IAD
<b>Ft. Lauderdale</b>					155p	530p	ExSa	140/959	IAD
115p	615p	ExSa	965/721	IAD	<b>Cincinnati</b>				
<b>Jacksonville</b>					845a	130p	ExSu	90/135	IAD
115p	535p	ExSa	965/147	IAD	155p	730p	ExSa	140/651	IAD
<b>New Orleans</b>					<b>Cleveland</b>				
115p	510p	ExSa	965/205	IAD	1145a	350p	Daily	752/75	IAD
<b>New York/LaGuardia</b>					<b>Hartford/Springfield</b>				
115p	345p	ExSa	965/136	IAD	845a	125p	ExSu	90/154	IAD
<b>New York/White Plains</b>					155p	605p	ExSa	140/158	IAD
115p	430p	ExSa	965/386	IAD	640p	1045p	ExSa	82/160	IAD
<b>Orlando</b>					<b>New York/LaGuardia</b>				
115p	600p	ExSa	965/642	IAD	845a	100p	ExSu	90/138	IAD
<b>Rochester, NY</b>					1145a	345p	Daily	752/136	IAD
115p	335p	ExSa	965/204	IAD	155p	550p	Daily	140	1
<b>Tampa</b>					640p	1030p	ExSa	82/142	IAD
115p	610p	ExSa	965/77	IAD	<b>New York/White Plains</b>				
<b>Washington/Dulles</b>					1145a	430p	ExSa	752/386	IAD
115p	205p	ExSa	965	0	640p	1040p	ExSa	82/388	IAD
<b>Washington/National</b>					<b>Rochester, NY</b>				
1110a	1200n	ExSu	961	0	845a	1255p	ExSu	90/202	IAD
<b>From</b>					<b>FT. LAUDERDALE</b>				
Reservations (305) 761-7833					Reservations (305) 761-7833				
<b>To</b>					<b>Washington/Dulles</b>				
<b>Binghamton, NY</b>					845a	1105a	ExSu	90	0
155p	635p	ExSa	140/914	IAD	1145a	205p	Daily	752	0
					155p	415p	Daily	140	0
					640p	905p	ExSa	82	0

Free Cocktails Served on All Peak Flights. For Snack Service, Please Consult Your Travel Agent or New York Air.

BOS-Boston EWR-Newark  
LGA-LaGuardia IAD-Washington (Dulles)  
CO-Continental Airlines

# NEW YORK AIR

Leave	Arrive	Freq.	Flight No.	Stops/Via	Leave	Arrive	Freq.	Flight No.	Stops/Via
<b>From</b>					<b>Washington/Dulles</b>				
<b>HARTFORD/</b>					640a	759a	ExSu	151	0
<b>SPRINGFIELD</b>					1020a	1140a	ExSu	153	0
Hartford (203) 560-1185					155p	315p	Daily	157	0
Springfield (413) 733-6111					640p	800p	ExSa	161	0
<b>To</b>					<b>From</b>				
<b>Charlottesville, VA</b>					<b>HOUSTON</b>				
640a	905a	ExSaSu	151/951	IAD	<b>INTERCONTINENTAL</b>				
155p	530p	ExSa	157/959	IAD	Reservations (713) 821-2100				
<b>Cincinnati</b>					<b>To</b>				
1020a	130p	ExSu	153/135	IAD	<b>Boston</b>				
<b>Cleveland</b>					810a	230p	ExSu	CO128/114	LGA
640a	945a	ExSu	151	1	810a	230p	SuOnly	CO128/114	LGA
640p	1015p	ExSa	161/641	IAD	D-1/12/86				
<b>Ft. Lauderdale</b>					1100a	335p	Daily	CO136	0
640a	1105a	ExSu	151/143	IAD	1110a	530p	Daily	CO122/120	LGA
155p	615p	Daily	157/721	IAD	315p	925p	ExSa	CO190/80	IAD
640p	1210a	ExSa	161/137	IAD	655p	1145p	Daily	CO398	0
<b>Jacksonville</b>					<b>New York/LaGuardia</b>				
640a	1135a	ExSu	151/141	IAD	810a	1230p	ExSu	CO128	0
155p	535p	Daily	157/147	IAD	810a	1230p	SuOnly	CO128	0
<b>New Orleans</b>					D-1/12/86				
640a	1115a	ExSu	151/381	IAD	1110a	330p	Daily	CO122	0
640p	1125p	ExSa	161/385	IAD	255p	730p	Daily	CO124	0
<b>Newport News, VA</b>					640p	1055p	Daily	CO126	0
640a	915a	ExSaSu	151/941	IAD	<b>New York/Newark</b>				
<b>Norfolk, VA</b>					740a	1145a	Daily	CO140	0
640a	930a	ExSaSu	151/901	IAD	D-1/12/86				
<b>Orlando</b>					740a	1145a	ExSu	CO140	0
640a	1105a	ExSu	151/203	IAD	E-1/13/86				
155p	600p	Daily	157/642	IAD	1105a	310p	Daily	CO144	0
<b>Tampa</b>					130p	535p	Daily	CO146	0
640a	1110a	ExSu	151/87	IAD	645p	1050p	Daily	CO142	0
155p	610p	Daily	157/77	IAD	<b>Washington/Dulles</b>				
					800a	1150a	ExSa	CO194	0
					E-1/17/86				
					800a	1155a	ExSa	CO194	0
					D-1/16/86				
					125p	525p	Daily	CO192	0
					315p	655p	ExSa	CO190	0
					640p	1030p	Daily	CO198	0
					E-1/17/86				
					640p	1035p	Daily	CO198	0
					D-1/16/86				

Free Cocktails Served on All Peak Flights. For Snack Service, Please Consult Your Travel Agent or New York Air.

BOS-Boston EWR-Newark  
LGA-LaGuardia IAD-Washington (Dulles)  
CO-Continental Airlines



# NEW YORK AIR

Leave	Arrive	Freq.	Flight No.	Stops/Via	Leave	Arrive	Freq.	Flight No.	Stops/Via
<b>From JACKSONVILLE</b>					<b>From MORGANTOWN, WV</b>				
Reservations (904) 358-7799					Reservations (800) 221-9300				
<b>To Boston</b>					<b>To Washington/National</b>				
1205p	400p	Daily	204/86	IAD	710a	759a	ExSaSu	930	0
655p	1055p	ExSa	160/82	IAD	825a	915a	SaOnly	936	0
<b>Charlottesville, VA</b>					140p 230p ExSaSu 932 0				
1205p	300p	ExSu	204/955	IAD	240p	330p	SaOnly	938	0
1205p	400p	ExSa	204/957	IAD	605p	700p	ExSa	934	0
<b>Cleveland</b>					<b>From NEW ORLEANS</b>				
1205p	350p	Daily	204/75	IAD	Reservations (504) 523-7816				
<b>Hartford/Springfield</b>					<b>To Boston</b>				
655p	1045p	ExSa	160	1	700a	1215p	ExSu	74	1
<b>Newport News, VA</b>					1130a 620p SaOnly 386/84 IAD				
1205p	320p	ExSa	204/945	IAD	1150a	530p	ExSa	262	1
<b>New York/LaGuardia</b>					545p 1055p ExSa 388/82 IAD				
1205p	345p	Daily	204/136	IAD	<b>Charlottesville, VA</b>				
655p	1030p	ExSa	160/142	IAD	700a	1110a	ExSu	74/953	IAD
<b>New York/White Plains</b>					1130a 400p ExSa 386/957 IAD				
1205p	430p	ExSa	204/386	IAD	<b>Cincinnati</b>				
655p	1040p	ExSa	160/388	IAD	700a	130p	ExSu	74/135	IAD
<b>Rochester, NY</b>					<b>Detroit</b>				
1205p	335p	Daily	204	1	1150a	625p	Daily	262/465	EWR
655p	1050p	ExSa	160/210	IAD	<b>Hartford/Springfield</b>				
<b>Washington/Dulles</b>					700a 125p ExSu 74/154 IAD				
1205p	155p	Daily	204	0	545p	1045p	ExSa	388/160	IAD
655p	850p	ExSa	160	0	<b>Newport News, VA</b>				
<b>From MANASSAS, VA</b>					700a 1140a SaOnly 74/970 IAD				
Reservations (800) 221-9300					<b>New York/LaGuardia</b>				
<b>To Washington/National</b>					700a 100p ExSu 74/138 IAD				
615a	645a	ExSaSu	920	0	1130a	550p	Daily	386/140	IAD
					545p 1030p ExSa 388/142 IAD				

Free Cocktails Served on All Peak Flights. For Snack Service, Please Consult Your Travel Agent or New York Air.

BOS-Boston EWR-Newark  
LGA-LaGuardia IAD-Washington (Dulles)  
CO-Continental Airlines

# NEW YORK AIR

Leave	Arrive	Freq.	Flight No.	Stops/Via	Leave	Arrive	Freq.	Flight No.	Stops/Via
<b>From NEW ORLEANS (Cont'd)</b>					<b>Cleveland</b>				
Reservations (800) 221-9300					645a 945a ExSaSu 940/151 IAD				
<b>New York/Newark</b>					105p 350p SaOnly 971/75 IAD				
1150a	335p	Daily	262	0	650p 1015p ExSaSu 948/641 IAD				
555p	930p	SaOnly	754	0	<b>Hartford/Springfield</b>				
740p	1120p	ExSa	758	0	645a 950a ExSaSu 940/150 IAD				
<b>New York/White Plains</b>					930a 125p ExSu 942/154 IAD				
1130a	430p	ExSa	386	1	650p 1045p ExSaSu 948/160 IAD				
545p	1040p	ExSa	388	1	<b>Jacksonville</b>				
<b>Norfolk, VA</b>					645a 1135a ExSaSu 940/141 IAD				
700a	1210p	SaOnly	74/970	IAD	105p 535p SaOnly 971/147 IAD				
<b>Rochester, NY</b>					<b>New Orleans</b>				
700a	1255p	ExSu	74/202	IAD	645a 1115a ExSaSu 940/381 IAD				
545p	1050p	ExSa	388/210	IAD	105p 510p SaOnly 971/205 IAD				
<b>Washington/Dulles</b>					650p 1125p ExSaSu 948/385 IAD				
700a	1015a	ExSu	74	0	<b>New York/LaGuardia</b>				
1130a	245p	ExSa	386	0	930a 100p ExSu 942/138 IAD				
1130a	255p	SaOnly	386	0	105p 345p SaOnly 971/136 IAD				
545p	900p	ExSa	388	0	345p 735p ExSa 946/146 IAD				
<b>Washington/National</b>					650p 1030p ExSaSu 948/142 IAD				
1150a	505p	SuOnly	262/317	EWR	<b>New York/White Plains</b>				
<b>From NEWPORT NEWS, VA</b>					650p 1040p ExSaSu 948/388 IAD				
Reservations (800) 221-9300					<b>Orlando</b>				
<b>To Boston</b>					645a 1105a ExSaSu 940/203 IAD				
930a	1215p	ExSu	942/74	IAD	105p 600p SaOnly 971/642 IAD				
105p	400p	SaOnly	971/86	IAD	<b>Rochester, NY</b>				
345p	700p	ExSa	946/76	IAD	930a 1255p ExSu 942/202 IAD				
650p	959p	ExSaSu	948/92	IAD	105p 335p SaOnly 971/204 IAD				
<b>Cincinnati</b>					650p 1050p ExSaSu 948/210 IAD				
930a	130p	ExSu	942/135	IAD	<b>Tampa</b>				
345p	730p	ExSa	946/651	IAD	645a 1110a ExSaSu 940/87 IAD				
					930a 115p ExSu 942/145 IAD				
					105p 610p SaOnly 971/77 IAD				
					<b>Washington/Dulles</b>				
					645a 740a ExSaSu 940 0				
					930a 1025a ExSu 942 0				
					105p 200p SaOnly 971 0				
					345p 440p ExSa 946 0				
					650p 740p ExSaSu 948 0				

Free Cocktails Served on All Peak Flights. For Snack Service, Please Consult Your Travel Agent or New York Air.

BOS-Boston EWR-Newark  
LGA-LaGuardia IAD-Washington (Dulles)  
CO-Continental Airlines



# AT FIVE YEARS OLD, WE'RE KIND OF BIG FOR OUR AGE

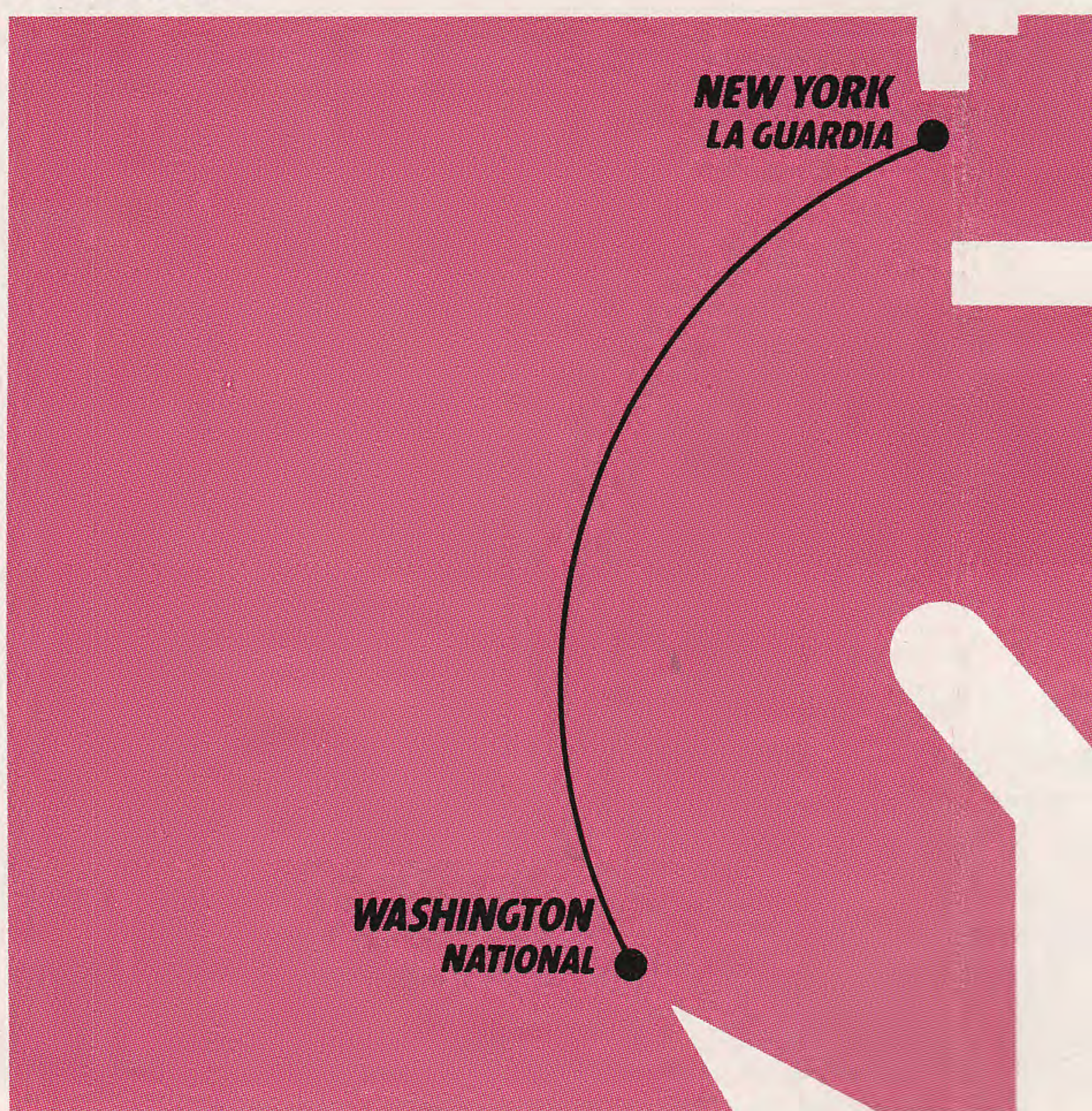
On December 19, 1980, New York Air was just a couple of planes to a couple of fine cities: D.C. and N.Y.C.

Today we're a lot more planes, a lot more cities and a lot more airline.

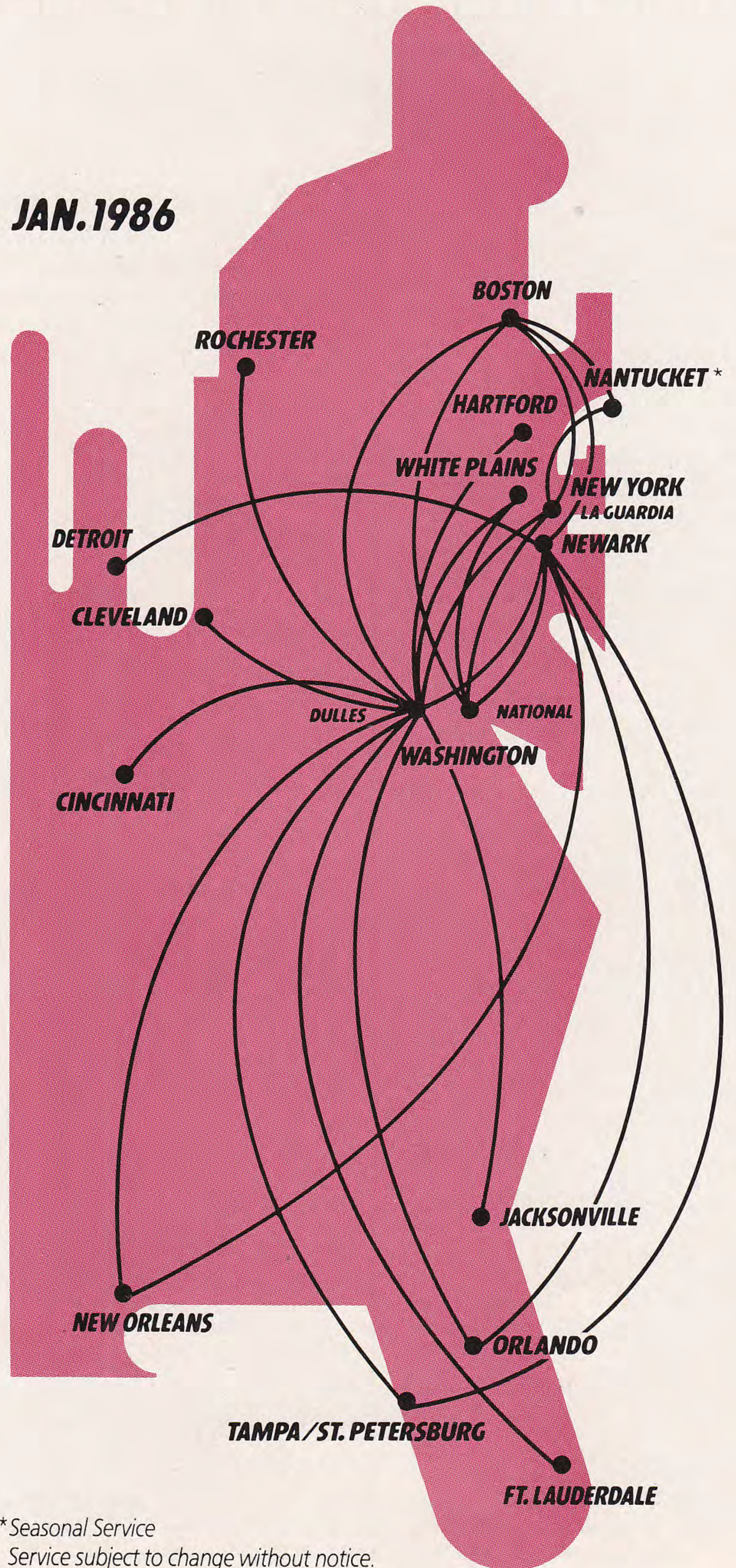
We're nonstop service to 17 cities — plus connections with Continental Airlines and the New York Air Connection.

We did it with spacious comfort, our complimentary amenities and our attention to convenient service and low fares. And the way it's working, it looks like the sky's the limit!

## DEC. 1980



## JAN. 1986



\* Seasonal Service  
Service subject to change without notice.



Leave	Arrive	Freq.	Flight No.	Stops/Via	Leave	Arrive	Freq.	Flight No.	Stops/Via
<b>From</b>					<b>Ft. Lauderdale</b>				
<b>NEW YORK</b>					650a	1105a	ExSu	143	1
<b>LAGUARDIA</b>					845a	125p	Daily	145/73	IAD
					145p	615p	Daily	147/721	IAD
					759p	1210a	ExSa	137	1
New York (212) 839-9533 (718) 565-1100					<b>Houston/Intercontinental</b>				
Nassau/Suffolk (516) 242-1000 Westchester (914) 681-0001					740a	1030a	Daily	CO127	0
<b>To</b>					E-1/17/86				
<b>Boston</b>					745a	1030a	Daily	CO127	0
730a	830a	ExSu	102	0	D-1/16/86				
830a	930a	ExSaSu	104	0	1115a	205p	Daily	CO125	0
930a	1030a	Daily	106	0	E-1/17/86				
1130a	1230p	Daily	110	0	1120a	205p	Daily	CO125	0
1230p	130p	ExSa	112	0	D-1/16/86				
130p	230p	Daily	114	0	420p	705p	Daily	CO123	0
330p	430p	ExSa	118	0	D-1/16/86				
430p	530p	Daily	120	0	420p	710p	Daily	CO123	0
530p	629p	ExSa	122	0	E-1/17/86				
630p	730p	Daily	124	0	800p	1045p	Daily	CO129	0
730p	830p	Daily	126	0	D-1/16/86				
830p	930p	ExSa	128	0	800p	1050p	ExSa	CO129	0
					E-1/17/86				
<b>Charlottesville, VA</b>					<b>Jacksonville</b>				
650a	905a	ExSaSu	143/951	IAD	740a	1135a	ExSu	141	1
845a	1110a	ExSu	145/953	IAD	145p	535p	Daily	147	1
145p	400p	ExSa	147/957	IAD	<b>Manassas, VA</b>				
620p	845p	ExSa	149/968	IAD	620p	805p	ExSaSu	149/948	IAD
					<b>New Orleans</b>				
<b>Cincinnati</b>					740a	1115a	ExSu	141/381	IAD
1035a	130p	Daily	135	1	145p	510p	Daily	147/205	IAD
					759p	1125p	ExSa	137/385	IAD
<b>Cleveland</b>					<b>Newport News, VA</b>				
650a	945a	ExSu	143/151	IAD	650a	915a	ExSaSu	143/941	IAD
620p	1015p	ExSa	149/641	IAD	845a	1140a	Sa Only	145/970	IAD
					<b>Norfolk, VA</b>				
<b>Denver</b>					650a	930a	ExSaSu	143/901	IAD
930a	1140a	Daily	CO461	0	845a	1210p	Sa Only	145/970	IAD
225p	440p	Daily	CO463	0	<b>Orlando</b>				
525p	740p	Daily	CO467	0	650a	1105a	ExSu	143/203	IAD
					845a	1245p	Sa Only	145/661	IAD
<b>Elkins, WV</b>					145p	600p	Daily	147/642	IAD
740a	1105a	ExSaSu	141/962	IAD	Continued next page				

Free Cocktails Served on All Peak Flights. For Snack Service, Please Consult Your Travel Agent or New York Air.

BOS-Boston EWR-Newark  
LGA-LaGuardia IAD-Washington (Dulles)  
CO-Continental Airlines

Leave	Arrive	Freq.	Flight No.	Stops/Via	Leave	Arrive	Freq.	Flight No.	Stops/Via
<b>From</b>					<b>From</b>				
<b>NEW YORK</b>					<b>NEW YORK</b>				
<b>LAGUARDIA</b>					<b>NEWARK</b>				
					<b>(Cont'd)</b>				
New York (212) 839-9533 (718) 565-1100					Reservations (201) 623-0770				
Nassau/Suffolk (516) 242-1000 Westchester (914) 681-0001					<b>To</b>				
<b>Tampa</b>					<b>Boston</b>				
650a	1110a	ExSu	143/87	IAD	800a	900a	ExSu	248	0
845a	115p	Daily	145	1	1115a	1215p	ExSu	252	0
145p	610p	Daily	147/77	IAD	130p	230p	Daily	258	0
					230p	330p	Daily	260	0
					315p	430p	Su Only	272	0
					415p	530p	ExSa	262	0
					915p	1015p	ExSa	264	0
<b>Washington/Dulles</b>					<b>Denver</b>				
650a	800a	ExSu	143	0	620a	820a	Daily	CO315	0
740a	905a	ExSu	141	0	925a	1125a	Daily	CO317	0
845a	1010a	Daily	145	0	E-1/17/86				
1035a	1145a	Daily	135	0	930a	1125a	Daily	CO317	0
145p	305p	Daily	147	0	D-1/16/86				
620p	730p	ExSa	149	0	240p	450p	Daily	CO309	0
759p	905p	ExSa	137	0	520p	730p	Daily	CO311	0
					D-1/16/86				
					525p	725p	Daily	CO311	0
					E-1/17/86				
					725p	930p	Daily	CO307	0
					E-1/17/86				
					945p	1145p	ExSa	CO319	0
<b>Washington/National</b>					<b>Detroit</b>				
730a	830a	ExSaSu	1	0	650a	845a	ExSu	461	0
830a	930a	ExSu	3	0	1030a	1215p	Daily	320	0
930a	1030a	Daily	5	0	250p	435p	Daily	467	0
1030a	1130a	Daily	7	0	440p	625p	Daily	465	0
1130a	1230p	ExSa	9	0	710p	850p	ExSa	469	0
1230p	130p	Daily	11	0	915p	1055p	ExSa	269	0
130p	230p	Daily	21	0	<b>Ft. Lauderdale</b>				
230p	330p	Daily	23	0	850a	125p	Su Only	753/73	IAD
330p	430p	ExSa	25	0	Continued next page				
430p	530p	Daily	27	0					
530p	630p	Daily	29	0					
630p	730p	Daily	31	0					
730p	830p	Daily	33	0					
830p	930p	ExSa	35	0					
1000p	1050p	ExSa	37	0					

Free Cocktails Served on All Peak Flights. For Snack Service, Please Consult Your Travel Agent or New York Air.

BOS-Boston EWR-Newark  
LGA-LaGuardia IAD-Washington (Dulles)  
CO-Continental Airlines



# NEW YORK AIR

Leave	Arrive	Freq.	Flight No.	Stops/Via
<b>From</b>				
<b>NEW YORK NEWARK</b>				
<b>(Cont'd)</b>				
<b>Houston/Intercontinental</b>				
720a	1000a	Daily	CO147	0
1225p	305p	ExSa	CO145	0
1225p	305p	Sa Only	CO145	0
E-1/18/86				
400p	640p	Daily	CO141	0
625p	905p	Daily	CO143	0
D-1/11/86				
625p	905p	ExSa	CO143	0
E-1/12/86				
<b>New Orleans</b>				
830a	1055a	Daily	251	0
440p	710p	Daily	273	0
<b>Orlando</b>				
959a	1245p	Daily	253	0
<b>Tampa</b>				
820a	1105a	Daily	771	0
850a	115p	Su Only	753/145	IAD
<b>Washington/Dulles</b>				
850a	1000a	Su Only	753	0
<b>Washington/National</b>				
700a	759a	ExSaSu	301	0
750a	900a	ExSu	321	0
905a	1015a	ExSu	303	0
1200n	1259p	ExSaSu	323	0
225p	325p	ExSa	305	0
350p	500p	ExSaSu	307	0
405p	505p	Su Only	317	0
610p	715p	ExSa	311	0
700p	800p	ExSa	315	0

Free Cocktails Served on All Peak Flights. For Snack Service, Please Consult Your Travel Agent or New York Air.

BOS-Boston  
LGA-LaGuardia  
CO-Continental Airlines  
EWR-Newark  
IAD-Washington (Dulles)

# NEW YORK AIR

Leave	Arrive	Freq.	Flight No.	Stops/Via
<b>From</b>				
<b>NORFOLK, VA</b>				
Reservations (800) 221-9300				
<b>To</b>				
<b>Boston</b>				
945a	110p	ExSaSu	902/90	IAD
1235p	400p	Sa Only	971/86	IAD
330p	620p	ExSaSu	904/84	IAD
635p	925p	ExSa	906/80	IAD
<b>Cincinnati</b>				
945a	130p	ExSaSu	902/135	IAD
330p	730p	ExSaSu	904/651	IAD
<b>Cleveland</b>				
1235p	350p	Sa Only	971/75	IAD
635p	1015p	ExSa	906/641	IAD
<b>Hartford/Springfield</b>				
945a	125p	ExSaSu	902/154	IAD
330p	605p	ExSaSu	904/158	IAD
635p	1045p	ExSa	906/160	IAD
<b>Jacksonville</b>				
1235p	535p	Sa Only	971/147	IAD
<b>New Orleans</b>				
1235p	510p	Sa Only	971/205	IAD
635p	1125p	ExSa	906/385	IAD
<b>New York/LaGuardia</b>				
945a	100p	ExSaSu	902/138	IAD
1235p	345p	Sa Only	971/136	IAD
635p	1030p	ExSa	906/142	IAD
<b>Orlando</b>				
1235p	600p	Sa Only	971/642	IAD
<b>Rochester, NY</b>				
945a	1255p	ExSaSu	902/202	IAD
1235p	335p	Sa Only	971/204	IAD
<b>Tampa</b>				
1235p	610p	Sa Only	971/77	IAD

Free Cocktails Served on All Peak Flights. For Snack Service, Please Consult Your Travel Agent or New York Air.

BOS-Boston  
LGA-LaGuardia  
CO-Continental Airlines  
EWR-Newark  
IAD-Washington (Dulles)

## Washington/Dulles

945a	1045a	ExSaSu	902	0
1235p	200p	Sa Only	971	1
330p	430p	ExSaSu	904	0
635p	735p	ExSa	906	0

## From ORLANDO

Reservations (305) 295-6000

<b>To</b>				
<b>Boston</b>				
1200n	400p	Daily	136/86	IAD
125p	530p	ExSa	762/262	EWR
630p	1055p	ExSa	641/82	IAD

## Charlottesville, VA

1200n	300p	ExSu	136/955	IAD
1200n	400p	ExSa	136/957	IAD

## Cleveland

1200n	350p	Daily	136/75	IAD
630p	1015p	ExSa	641	1

## Detroit

125p	625p	Daily	762/465	EWR
130p	625p	Sa Only	760/465	EWR

## Hartford/Springfield

630p	1045p	ExSa	641/160	IAD
------	-------	------	---------	-----

## Newport News, VA

1200n	320p	ExSa	136/945	IAD
-------	------	------	---------	-----

## New York/LaGuardia

1200n	345p	Daily	136	1
630p	1030p	ExSa	641/142	IAD

## New York/Newark

125p	355p	Daily	762	0
130p	410p	Sa Only	760	0

## New York/White Plains

1200n	430p	ExSa	136/386	IAD
630p	1040p	ExSa	641/388	IAD

Continued next page



# NEW YORK AIR

Leave	Arrive	Freq.	Flight No.	Stops/Via
<b>From</b>				
<b>ORLANDO</b>				
<b>(Cont'd)</b>				
<b>Rochester, NY</b>				
1200n	335p	Daily	136/204	IAD
630p	1050p	ExSa	641/210	IAD
<b>Washington/Dulles</b>				
1200n	200p	Daily	136	0
630p	830p	Daily	641	0
<b>Washington/National</b>				
1200n	530p	Daily	136/27	LGA
<b>From</b>				
<b>ROCHESTER,</b>				
<b>NY</b>				
Reservations (800) 221-9300				
<b>To</b>				
<b>Charlottesville, VA</b>				
650a	905a	ExSaSu	203/951	IAD
140p	400p	ExSa	205/957	IAD
<b>Cincinnati</b>				
400p	730p	ExSa	207/651	IAD
<b>Cleveland</b>				
650a	945a	ExSu	203/151	IAD
<b>Denver</b>				
650a	1130a	ExSu	203/CO385	IAD
<b>Ft. Lauderdale</b>				
650a	1105a	ExSu	203/143	IAD
140p	615p	Daily	205/721	IAD
<b>Jacksonville</b>				
650a	1135a	ExSu	203/141	IAD
140p	535p	Daily	205/147	IAD
<b>New Orleans</b>				
650a	1115a	ExSu	203/381	IAD
140p	510p	Daily	205	1

Leave	Arrive	Freq.	Flight No.	Stops/Via
<b>Newport News, VA</b>				
650a	915a	ExSaSu	203/941	IAD
400p	635p	ExSaSu	207/947	IAD
400p	815p	ExSa	207/907	IAD
<b>Norfolk, VA</b>				
650a	930a	ExSaSu	203/901	IAD
400p	745p	ExSa	207/907	IAD
<b>Orlando</b>				
650a	1105a	ExSu	203	1
140p	600p	Daily	205/642	IAD
<b>Tampa</b>				
650a	1110a	ExSu	203/87	IAD
140p	610p	Daily	205/77	IAD
<b>Washington/Dulles</b>				
650a	800a	ExSu	203	0
140p	250p	Daily	205	0
400p	510p	ExSa	207	0
<b>From</b>				
<b>TAMPA</b>				
Reservations (813) 885-2181				
<b>To</b>				
<b>Binghamton, NY</b>				
155p	635p	ExSa	84/914	IAD
<b>Boston</b>				
1135a	330p	Daily	260	1
1145a	400p	Daily	86	1
155p	620p	Daily	84	1
645p	1055p	ExSa	142/82	IAD
<b>Charlottesville, VA</b>				
1145a	300p	ExSu	86/955	IAD
1145a	400p	ExSa	86/957	IAD
155p	530p	ExSa	84/959	IAD
<b>Cincinnati</b>				
155p	730p	ExSa	84/651	IAD
<b>Cleveland</b>				
1145a	350p	Daily	86/75	IAD

Continued next page

Free Cocktails Served on All Peak Flights. For Snack Service, Please Consult Your Travel Agent or New York Air.

BOS-Boston  
LGA-LaGuardia  
EWR-Newark  
IAD-Washington (Dulles)  
CO-Continental Airlines

# NEW YORK AIR

Leave	Arrive	Freq.	Flight No.	Stops/Via
<b>From</b>				
<b>TAMPA</b>				
<b>(Cont'd)</b>				
<b>Detroit</b>				
1135a	435p	Daily	260/467	EWR
<b>Hartford/Springfield</b>				
155p	605p	ExSa	84/158	IAD
645p	1045p	ExSa	142/160	IAD
<b>Newport News, VA</b>				
1145a	320p	ExSa	86/945	IAD
155p	635p	ExSaSu	84/947	IAD
<b>New York/LaGuardia</b>				
1145a	345p	Daily	86/136	IAD
155p	550p	Daily	84/140	IAD
645p	1030p	ExSa	142	1
<b>New York/Newark</b>				
1135a	205p	Daily	260	0
<b>New York/White Plains</b>				
1145a	430p	ExSa	86/386	IAD
645p	1040p	ExSa	142/388	IAD
<b>Norfolk, VA</b>				
155p	620p	ExSa	84/905	IAD
<b>Rochester, NY</b>				
1145a	335p	Daily	86/204	IAD
645p	1050p	ExSa	142/210	IAD
<b>Washington/Dulles</b>				
1145a	200p	Daily	86	0
155p	410p	Daily	84	0
645p	900p	ExSa	142	0
<b>Washington/National</b>				
1135a	325p	ExSa	260/305	EWR

Leave	Arrive	Freq.	Flight No.	Stops/Via
<b>From</b>				
<b>WASHINGTON</b>				
<b>DULLES</b>				
Reservations (800) 221-9300				
<b>To</b>				
<b>Binghamton, NY</b>				
740a	850a	ExSaSu	910	0
205p	315p	ExSaSu	912	0
525p	635p	ExSa	914	0
<b>Boston</b>				
650a	820a	ExSaSu	70	0
700a	930a	ExSaSu	134/104	LGA
800a	930a	Sa Only	88	0
1045a	1215p	Daily	74	0
1145a	110p	Daily	90	0
1155a	230p	Daily	138/114	LGA
230p	400p	Daily	86	0
240p	530p	Daily	136/120	LGA
450p	620p	Daily	84	0
530p	700p	Daily	76	0
755p	925p	ExSa	80	0
830p	959p	ExSa	92	0
930p	1055p	ExSa	82	0
<b>Charlottesville, VA</b>				
835a	905a	ExSaSu	951	0
1040a	1110a	ExSu	953	0
230p	300p	ExSu	955	0
330p	400p	ExSa	957	0
500p	530p	ExSa	959	0
815p	845p	ExSa	968	0
<b>Cincinnati</b>				
1210p	130p	Daily	135	0
610p	730p	ExSa	651	0
<b>Cleveland</b>				
825a	945a	ExSu	151	0
230p	350p	Daily	75	0
855p	1015p	ExSa	641	0

Continued next page

Free Cocktails Served on All Peak Flights. For Snack Service, Please Consult Your Travel Agent or New York Air.

BOS-Boston  
LGA-LaGuardia  
EWR-Newark  
IAD-Washington (Dulles)  
CO-Continental Airlines



# NEW YORK AIR

Leave	Arrive	Freq.	Flight No.	Stops/Via	Leave	Arrive	Freq.	Flight No.	Stops/Via
<b>From</b>					<b>Jacksonville</b>				
<b>WASHINGTON DULLES</b>					935a 1135a ExSu 141 0				
<b>(Cont'd)</b>					335p 535p Daily 147 0				
<b>Denver</b>					<b>Manassas, VA</b>				
620a	815a	ExSu	CO381	0	745p	800p	ExSa	906	0
E-1/17/86					750p	805p	ExSaSu	948	0
625a	815a	ExSu	CO381	0	<b>New Orleans</b>				
D-1/16/86					935a	1115a	ExSu	381	0
925a	1130a	Daily	CO385	0	325p	510p	Daily	205	0
230p	440p	Daily	CO387	0	935p	1125p	ExSa	385	0
D-1/16/86					<b>Newport News, VA</b>				
230p	445p	Daily	CO387	0	820a	915a	ExSaSu	941	0
E-1/17/86					1045a	1140a	Sa Only	970	0
530p	745p	ExSa	CO383	0	235p	320p	ExSa	945	0
530p	745p	Sa Only	CO383	0	540p	635p	ExSaSu	947	0
D-1/11/86					645p	815p	ExSa	907	1
<b>Elkins, WV</b>					<b>New York/LaGuardia</b>				
1015a	1105a	ExSa	962	0	700a	759a	ExSu	134	0
<b>Ft. Lauderdale</b>					1155a	100p	Daily	138	0
835a	1105a	ExSu	143	0	240p	345p	Daily	136	0
1045a	125p	Daily	73	0	445p	550p	Daily	140	0
335p	615p	Daily	721	0	635p	735p	Daily	146	0
935p	1210a	ExSa	137	0	930p	1030p	ExSa	142	0
<b>Hartford/Springfield</b>					<b>New York/White Plains</b>				
835a	950a	ExSu	150	0	630a	740a	ExSaSu	380	0
1210p	125p	Daily	154	0	315p	430p	ExSa	386	0
450p	605p	ExSa	158	0	940p	1040p	ExSa	388	0
930p	1045p	ExSa	160	0	<b>Norfolk, VA</b>				
<b>Houston/Intercontinental</b>					830a	930a	ExSaSu	901	0
735a	1000a	Daily	CO195	0	1045a	1210p	Sa Only	970	1
E-1/17/86					210p	310p	ExSaSu	903	0
745a	1000a	Daily	CO195	0	520p	620p	ExSa	905	0
D-1/16/86					645p	745p	ExSa	907	0
1155a	220p	ExSa	CO199	0	<b>Orlando</b>				
E-1/17/86					845a	1105a	Daily	203	0
1205p	220p	ExSa	CO199	0	1030a	1245p	Sa Only	661	0
D-1/16/86					340p	600p	Daily	642	0
445p	705p	Daily	CO197	0	<b>Rochester, NY</b>				
D-1/16/86					1145a	1255p	ExSu	202	0
445p	715p	Daily	CO197	0	235p	335p	Daily	204	0
E-1/17/86					940p	1050p	ExSa	210	0
730p	935p	ExSa	CO193	0	Continued next page				

Free Cocktails Served on All Peak Flights. For Snack Service, Please Consult Your Travel Agent or New York Air.

BOS-Boston  
LGA-LaGuardia  
CO-Continental Airlines  
EWR-Newark  
IAD-Washington (Dulles)

# NEW YORK AIR

Leave	Arrive	Freq.	Flight No.	Stops/Via	Leave	Arrive	Freq.	Flight No.	Stops/Via
<b>From</b>					<b>Denver</b>				
<b>WASHINGTON DULLES</b>					655a 1125a ExSaSu 300/CO317 EWR				
<b>(Cont'd)</b>					730a 1140a ExSu 4/CO461 LGA				
<b>Tampa</b>					1230p 440p Daily 22/CO463 LGA				
840a	1110a	ExSu	87	0	230p	725p	ExSa	306/CO311	EWR
1045a	115p	Daily	145	0	E-1/17/86				
340p	610p	Daily	77	0	230p	730p	ExSa	306/CO311	EWR
<b>Reservations (202) 588-2300</b>					D-1/16/86				
<b>To</b>					<b>Detroit</b>				
<b>Allentown, PA</b>					905a 1215p ExSu 320 1				
659a	750a	ExSaSu	920	0	1200n	435p	ExSaSu	302/467	EWR
350p	440p	ExSaSu	924	0	130p	435p	Su Only	324/467	EWR
600p	650p	ExSaSu	926	0	230p	625p	ExSa	306/465	EWR
<b>Binghamton, NY</b>					435p 850p ExSa 310/469 EWR				
100p	210p	ExSaSu	916	0	755p	1145p	ExSa	312/CO319	EWR
530p	645p	ExSaSu	918	0	<b>Elkins, WV</b>				
<b>Boston</b>					959a 1050a ExSu 960 0				
650a	930a	ExSaSu	2/104	LGA	<b>Morgantown, WV</b>				
730a	1030a	ExSu	4/106	LGA	915a	1005a	ExSaSu	931	0
855a	1025a	ExSaSu	52	0	1230p	130p	Sa Only	937	0
905a	1215p	ExSu	320/252	EWR	259p	359p	ExSa	933	0
930a	1230p	ExSa	10/110	LGA	720p	820p	ExSa	935	0
1030a	130p	ExSa	12/112	LGA	<b>New Orleans</b>				
1100a	1225p	Sa Only	56	0	655a	1055a	ExSaSu	300/251	EWR
1130a	230p	Daily	20/114	LGA	230p	710p	ExSa	306/273	EWR
1200n	230p	ExSaSu	302/258	EWR	<b>New York/LaGuardia</b>				
130p	430p	ExSa	24/118	LGA	650a	740a	ExSaSu	2	0
230p	530p	Daily	26/120	LGA	730a	830a	ExSu	4	0
355p	520p	ExSa	58	0	830a	930a	ExSu	8	0
430p	730p	Daily	30/124	LGA	930a	1030a	ExSa	10	0
530p	830p	Daily	32/126	LGA	1030a	1129a	Daily	12	0
615p	740p	ExSa	60	0	1130a	1230p	Daily	20	0
745p	900p	ExSa	66	0	1230p	129p	Daily	22	0
755p	1015p	ExSa	312/264	EWR	130p	229p	ExSa	24	0
855p	1025p	ExSa	68	0	230p	330p	Daily	26	0
Continued next page					330p	429p	Daily	28	0
Continued next page					430p	529p	Daily	30	0
Continued next page					530p	630p	Daily	32	0
Continued next page					630p	730p	Daily	34	0
Continued next page					730p	830p	ExSa	36	0
Continued next page					830p	930p	ExSa	38	0

Free Cocktails Served on All Peak Flights. For Snack Service, Please Consult Your Travel Agent or New York Air.

BOS-Boston  
LGA-LaGuardia  
CO-Continental Airlines  
EWR-Newark  
IAD-Washington (Dulles)



# NEW YORK AIR

Leave	Arrive	Freq.	Flight No.	Stops/Via	Leave	Arrive	Freq.	Flight No.	Stops/Via
<b>From</b>					<b>New York/White Plains</b>				
<b>WASHINGTON NATIONAL</b>					540p	700p	ExSa	372	0
<b>(Cont'd)</b>					<b>Tampa</b>				
<b>New York/Newark</b>					655a	755a	ExSaSu	300	0
					905a	1005a	ExSu	320	0
					1000a	1100a	ExSu	322	0
					1200n	100p	ExSaSu	302	0
					130p	230p	SuOnly	324	0
					200p	300p	ExSaSu	304	0
					230p	330p	ExSa	306	0
					435p	535p	ExSa	310	0
					755p	855p	ExSa	312	0
					910p	1010p	ExSa	314	0
					655a	1105a	ExSaSu	300/771	EWR
					<b>For White Plains Service See New York</b>				

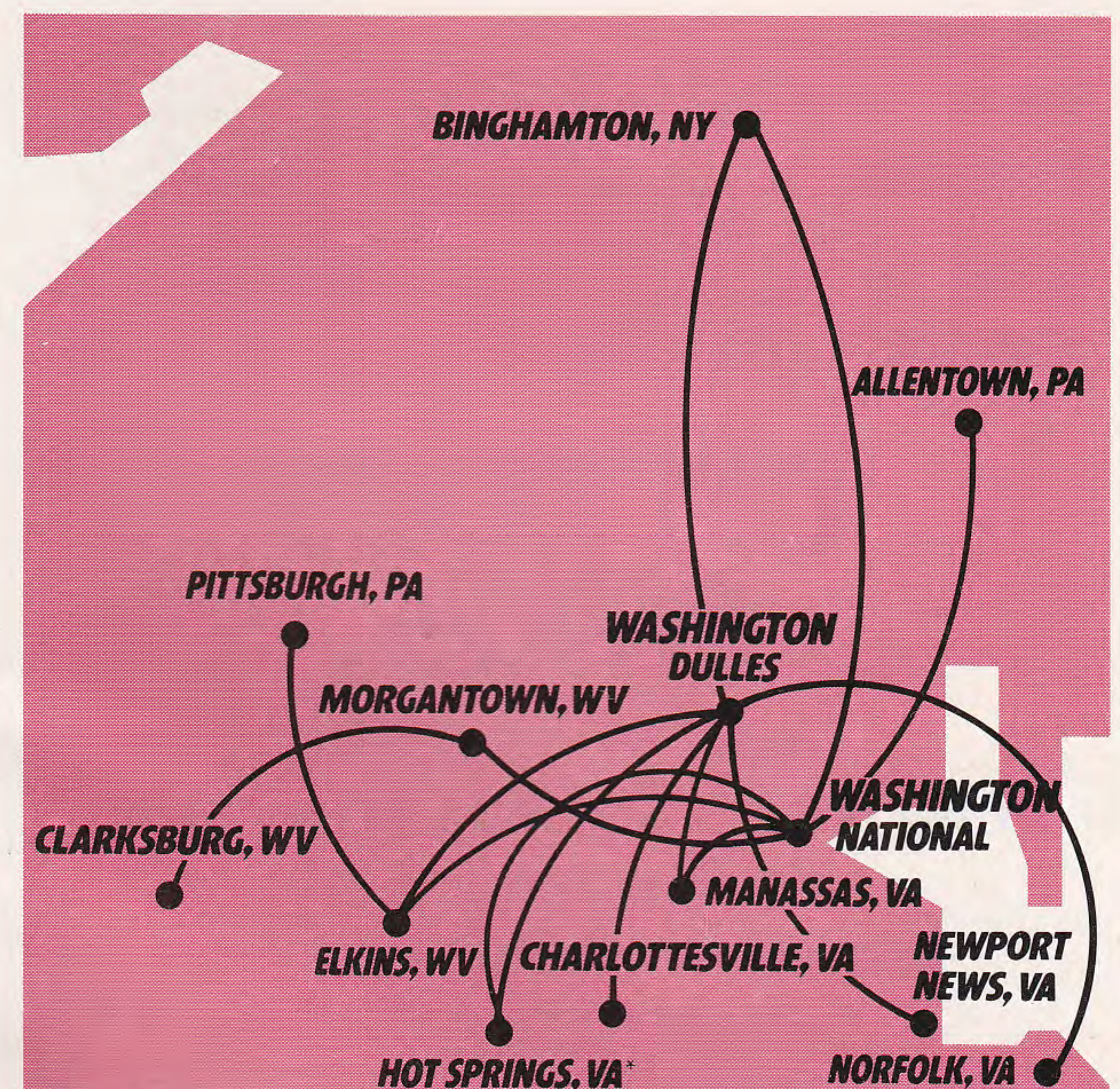
NEW YORK AIR

## NEW YORK AIR HAS BRANCHED OUT

It's called the NEW YORK AIR CONNECTION — 19 additional flights out of Dulles and 9 from National. To special destinations in Virginia, West Virginia and Pennsylvania.

Flying under New York Air's colors, the NEW YORK AIR CONNECTION, operated by Colgan Airways, provides convenient connections through Washington to all New York Air's major destinations.

It's just one more way we've added a few new branches to our family tree.



Free Cocktails Served on All Peak Flights. For Snack Service, Please Consult Your Travel Agent or New York Air.

BOS-Boston  
LGA-LaGuardia  
CO-Continental Airlines

EWR-Newark  
IAD-Washington (Dulles)

\* Seasonal Service

Service subject to change without notice.