

July 1, 1935
Eastern Standard Time

BOSTON-MAINE AIRWAYS CENTRAL VERMONT AIRWAYS

PASSENGERS
U.S. MAIL
AIR EXPRESS



Magnolia 7 (12) 35
"Always On Time"

July 1, 1935
Eastern Standard Time

BOSTON-MAINE AIRWAYS CENTRAL VERMONT AIRWAYS

PASSENGERS
U.S. MAIL
AIR EXPRESS



"Always On Time"

INFORMATION, RESERVATIONS, TICKETS

BOSTON, MASS.	North Station Airport Cent. Vt. Ry., 186 Tremont St.	Capitol 1400 Capitol 6000 Hubbard 2365
PORTLAND, ME	Union Station City Ticket Office Airport	Portland 2-0104 Portland 2-3745 Portland 4-4224
AUGUSTA, ME.	Railroad Station Airport	Augusta 2053 Augusta 1676
WATERVILLE, ME.	Railroad Station Airport	Waterville 42 Waterville 1816
BANGOR, ME.	Railroad Station Airport	Bangor 7304 Bangor 3534
BAR HARBOR, Me.	Railroad Ticket Office Airport	Bar Harbor 843 Ellsworth 163, Ring 4
MANCHESTER, N. H.	Railroad Station Airport	Manchester 367 Manchester 7860
CONCORD, N. H.	Railroad Station Airport	Concord 60 Concord 53156
WHITE RIVER JCT. VERMONT	Railroad Station Dartmouth College Airport	White River Jct. 179 Hanover 100 White River Jct. 115
MONTPELIER- BARRE, VERMONT	Railroad Station, Montpelier Railroad Station, Barre Airport	Montpelier 14 Barre 580 Montpelier 915
BURLINGTON, VERMONT	C. V.-B. R. T. Terminal Airport	Burlington 3610 Burlington 780
MONTREAL, P. O.	C. V. City Office 384 St. James St.	Marquette 7316
NEW YORK CITY	60 East 42nd St. 673 Fifth Ave.	Vanderbilt 3-1580 Wickersham 2-3200

Or any agent of the Boston and Maine and Maine Central Railroads or Central Vermont Railway, any Tourist or Travel Bureau or Hotel Porter. All seats are reserved. Reservations will not be made except on purchase of ticket or exchange order.

Any **Western Union** or **Postal Telegraph Office** will arrange air reservations and deliver tickets without extra charge.

BAGGAGE

Thirty five pounds of baggage will be carried free on each ticket. When weight allowance will permit, baggage in excess of thirty-five pounds will be carried and charged for at excess rates.

SHIP BY AIR EXPRESS

Minimum shipment $\frac{3}{4}$ pound—85c.; 1 pound—\$1.00. Door to door pick up and delivery service, no additional charge.

For complete rates and information, phone or address:
Railway Express Agency, Air Express Division
or any Western Union Office—package pick up by messenger with no extra cost.

USE AIR MAIL

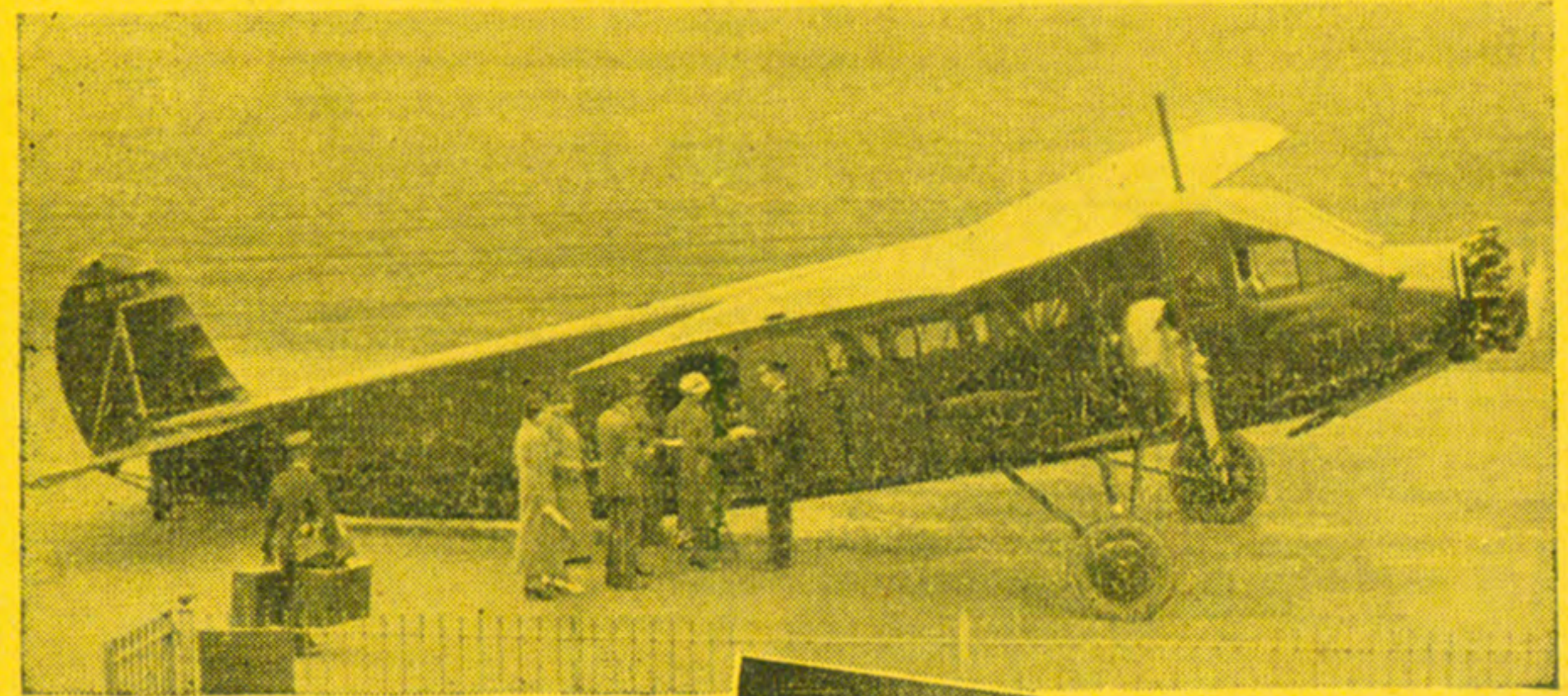
Tomorrow's Mail Today

Received First—Answered First
Six cents for the first ounce and each additional ounce.
Air mail closing times listed on Pages 3 and 4.

J. V. SHEEHAN

General Passenger Agent

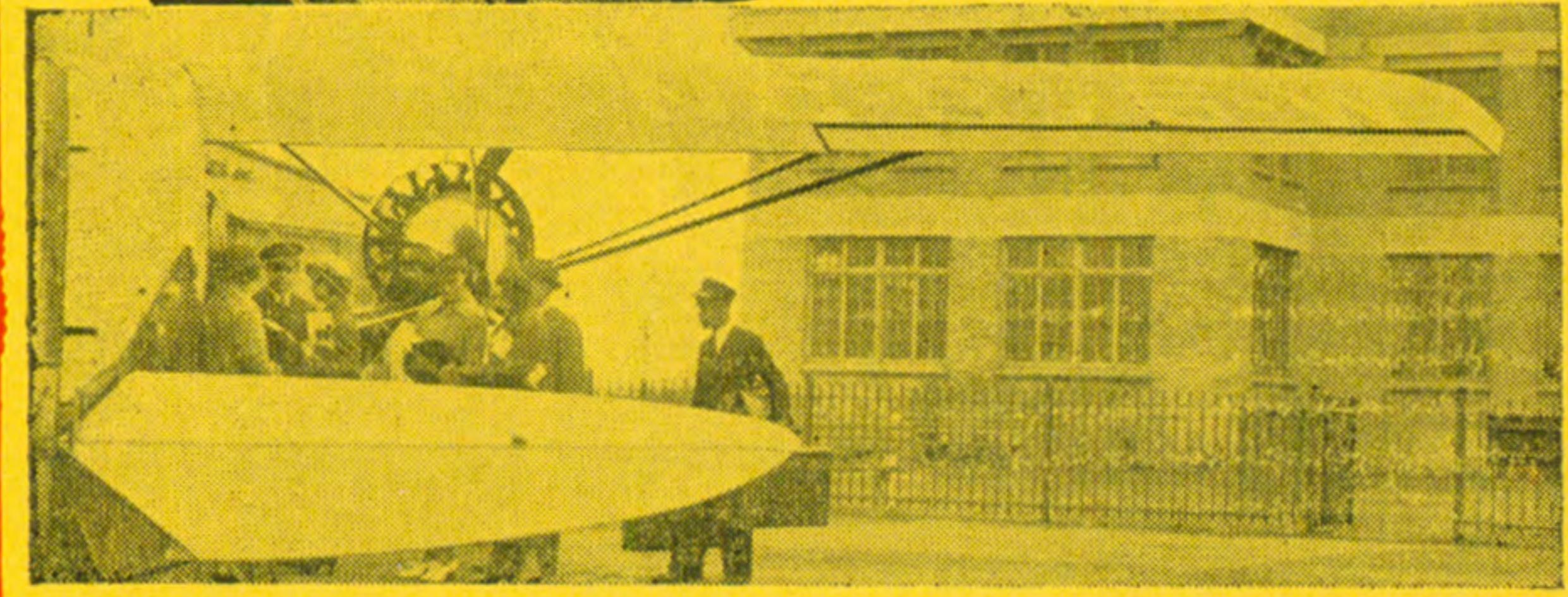
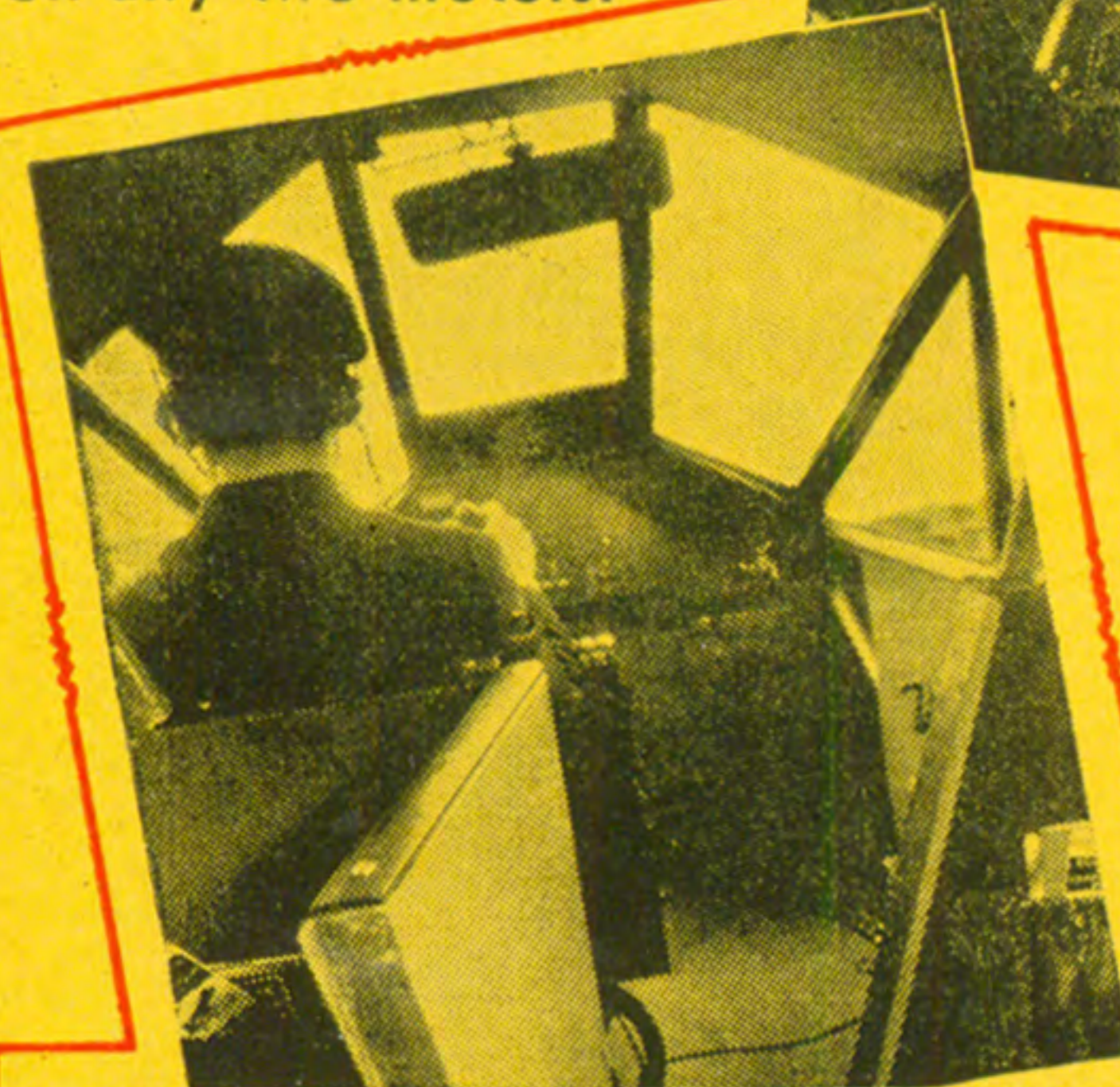
W. O. WRIGHT, Traffic Manager T. E. P. PRINGLE, Traffic Manager
Boston-Maine Airways, Inc. Central Vermont Airways, Inc.
BOSTON MASS



Pilots of the Boston-Maine, Central Vermont Airways are picked because of their training and experience. Radio equipment affords constant communication with ground stations. The trimotored planes fly fully loaded on any two motors.



Individual ventilators at each seat permit passengers to control the entrance of clean fresh air. Fares are so reasonable that almost everyone can afford the luxury and speed of plane travel.



FLY--SAVE TIME

DAILY SERVICE
PASSENGERS—MAIL—EXPRESS
BOSTON and

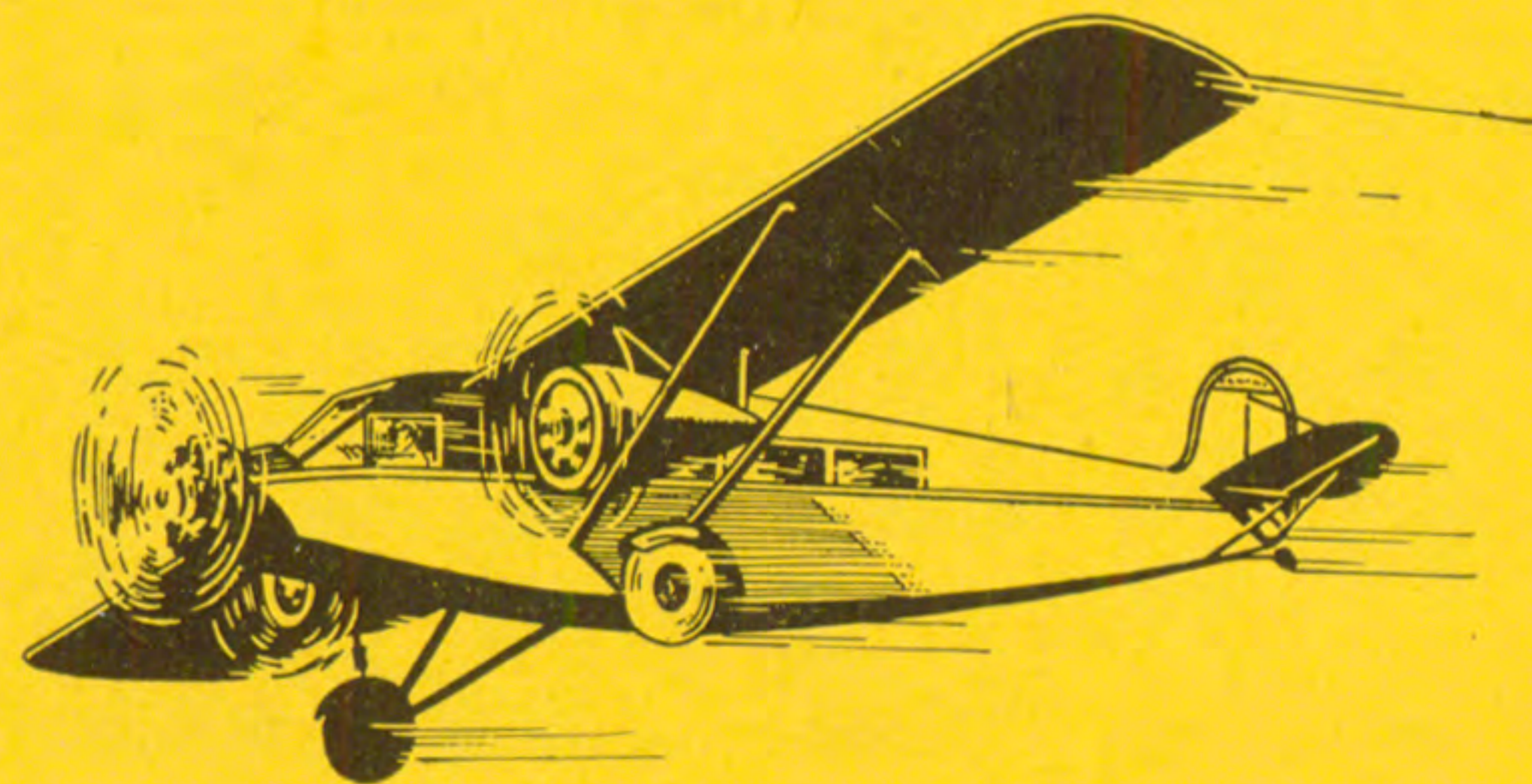
Portland, Me. Manchester, N. H.
Augusta, Me. Concord, N. H.
Waterville, Me. White River Jct., Vt.
Bangor, Me. Montpelier-Barre, Vt.
Bar Harbor, Me. Burlington, Vt.

Consult Agents for connecting schedules of other lines which provide through direct connections on All-Air or Air-Rail service between points on

BOSTON - MAINE AIRWAYS CENTRAL VERMONT AIRWAYS

and important off-line cities, a few of which are listed below

New York Chicago
Washington Los Angeles
Atlanta San Francisco



Boston - Maine Airways INC.

Paul F. Collins, President

In association with NATIONAL AIRWAYS, INC.

Amelia Earhart, Vice President

No. 2 Read Down		E. Standard Time		Read Up No. 1	
Daily A.M.	Miles	MAINE LINE Schedules—Airport to Airport		Daily P.M.	
10.00		Lv. ★BOSTON	Ar.	7.00	
11.05	95	Lv. PORTLAND, ME.	Lv.	6.05	
11.40	148	Lv. AUGUSTA, ME.	Lv.	5.25	
12.00	165	Lv. WATERVILLE, ME.	Lv.	5.05	
12.25	211	Ar. BANGOR, ME.	Lv.	4.30	
†12.35		Lv. BANGOR, ME.	Ar.	†4.15	
†12.55	245	Ar. BAR HARBOR, ME.	Lv.	†3.55	

†Service between Bangor and Bar Harbor operated daily to September 30.

Nos. 1 and 2 carry passengers, mail and express
All schedules subject to change without notice

LOW ROUND TRIP FARES

Fares Airport to Airport		Boston	Portland	Augusta	Waterville
PORTLAND	One Way	\$5.80			
	Round Trip	10.40			
AUGUSTA	One Way	8.90	\$3.20		
	Round Trip	16.00	5.70		
WATERVILLE	One Way	9.90	4.10	\$2.50	
	Round Trip	17.80	7.40	4.50	
BANGOR	One Way	12.60	6.90	3.80	\$2.80
	Round Trip	22.70	12.40	6.70	5.00
BAR HARBOR	One Way	14.70	8.90	5.80	4.80
	Round Trip	26.50	16.10	10.50	8.70

BANGOR TO BAR HARBOR \$2.50 One Way; \$4.50 Round Trip

ROUND TRIP TICKETS GOOD FOR RETURN ANY TIME

TRANSPORTATION TO AND FROM AIRPORTS

AT BOSTON

Air mail closes at Post-Office, 9.10 A.M.

★ Special Packard Limousine for plane connections.

Leaves Statler Hotel at 9.30 (E.S.T.) A.M., North Station at 9.40 (E.S.T.) A.M. and connects at Airport with inbound planes.

Fare, Fifty Cents

AT PORTLAND

Air mail closes at Post-Office, Trip 2, 10.45 A.M.; Trip 1, 5.40 P.M.

Between Stroudwater Airport and Union Station, Eastland Hotel or the Lafayette. Town Taxi.

Fare, Fifty Cents

Taxis leave for Airport 15 minutes before scheduled plane departure.

AT AUGUSTA

Air mail closes at Post-Office, Trip 2, 11.10 A.M.; Trip 1, 4.55 P.M.

Between Airport and business center. Call Leo's Taxi, Augusta 670. Running time 15 minutes.

Fare, Fifty Cents

AT WATERVILLE

Air mail closes at Post-Office, Trip 2, 11.30 A.M.; Trip 1, 4.35 P.M.

Between Airport and Railroad Station and 95 Main Street. Testa's Taxi Service. Taxis leave for Airport 30 minutes before scheduled plane departure. Phone Waterville 1822 or 42.

Fare, Forty Cents

AT BANGOR

Air mail closes at Post-Office, 4.00 P.M.

Between Airport and Maine Central Railroad Station and Bangor House. Kane's Taxi. Taxis leave for Airport 20 minutes before scheduled plane departure. Phone Bangor 7304.

Fare, Fifty Cents

AT BAR HARBOR AND ELLSWORTH

Between Airport and Maine Central Railroad ticket offices (phone Bar Harbor 843, Ellsworth 390). Limousines for plane connection leave Maine Central Railroad ticket offices 30 minutes before plane's departure.

Fare, One Dollar

Central Vermont Airways INC.

S. J. Solomon Vice President

No. 4 Read Down		E. Standard Time		Read Up No. 3	
Daily A.M.	Miles	N. H.-VT. LINE Schedules—Airport to Airport		Daily P.M.	
9.55		Lv. ★BOSTON	Ar.	6.55	
10.30	43	Lv. MANCHESTER, N. H.	Lv.	6.30	
10.50	62	Lv. CONCORD, N. H.	Lv.	6.10	
11.30	113	Lv. WHITE RIVER JCT., VT. (Dartmouth College)	Lv.	5.30	
†	153	Lv. †MONTPELIER-BARRE, VT.	Lv.	†	
12.20	191	Ar. BURLINGTON, VT.	Lv.	4.30	

Nos. 3 and 4 carry passengers, mail and express.

†Service temporarily discontinued.

ALL TIMES SHOWN ARE EASTERN STANDARD TIME

LOW ROUND TRIP FARES

Fares Airport to Airport		Boston	Man. ches- ter, N. H.	Con- cord, N. H.	White River Jct.	Mont- pelier-Barre
Manchester	One Way	\$2.70				
	Round Trip	4.80				
Concord	One Way	3.90				
	Round Trip	6.90				
Wh. River Jct.	One Way	6.90	\$4.30	\$3.10		
	Round Trip	12.50	7.70	5.50		
Mont-Barre†	One Way	9.30	6.70	5.50	\$2.50	
	Round Trip	16.80	12.00	9.90	4.50	
Burlington	One Way	11.50	8.90	7.70	4.60	\$2.50
	Round Trip	20.70	15.90	13.80	8.20	4.50

Round Trip Tickets Good for Return Any Time

AT MANCHESTER

Air mail closes at Post-Office—Trip 4, 9.45 A.M.; Trip 3, 5.45 P.M.

Between Airport & Manchester Sta. or Carpenter Hotel, call Checker Cab, phone Man. 90. Running time 15 minutes. Fare, Fifty Cents

AT CONCORD

Air mail closes at Post-Office—Trip 4, 10.30 A.M.; Trip 3, 5.50 P.M.

Between Airport and business center, call Yellow Cab Co. Phone Concord 2200. Running time 20 minutes. Fare, Fifty Cents

AT WHITE RIVER JCT.

Air mail closes at Post-Office—Trip 4, 11.15 A.M.; Trip 3, 5.15 P.M.

Between Airport and Coolidge Hotel. Call Coolidge Garage Taxi Service, phone White River Junction 94. Running time 15 minutes.

Fare, Fifty Cents

Between Airport and Hanover Inn. Call Thorburn, phone Hanover 190-W. Running time 25 minutes.

Fare, One Dollar

Between Airport and Rogers Hotel, Lebanon, N. H. Clark's Taxi Service, phone Lebanon 6. Running time 20 mins. Fare, Fifty Cents

AT BURLINGTON

Air mail closes at Post-Office, 4.00 P.M.

Between Airport and C. V.-B. R. T. Terminal opp. City Hall Park. Phone Burlington 3610. Running time 15 minutes. Fare, Fifty Cents

Read Down		AMERICAN AIRLINES		Read Up	
Daily A.M.	(Connecting Service) Airport to Airport	Daily P.M.			
7.15	Lv. NEW YORK Ar. (Newark Airport)	9.35			
8.30	Lv. HARTFORD Lv.				
9.15	Ar. BOSTON Lv.	8.00			

Fares: BOSTON-NEW YORK \$13.90 One Way \$25.02 Round Trip
BAR HARBOR-NEW YORK 28.60 One Way 51.52 Round Trip