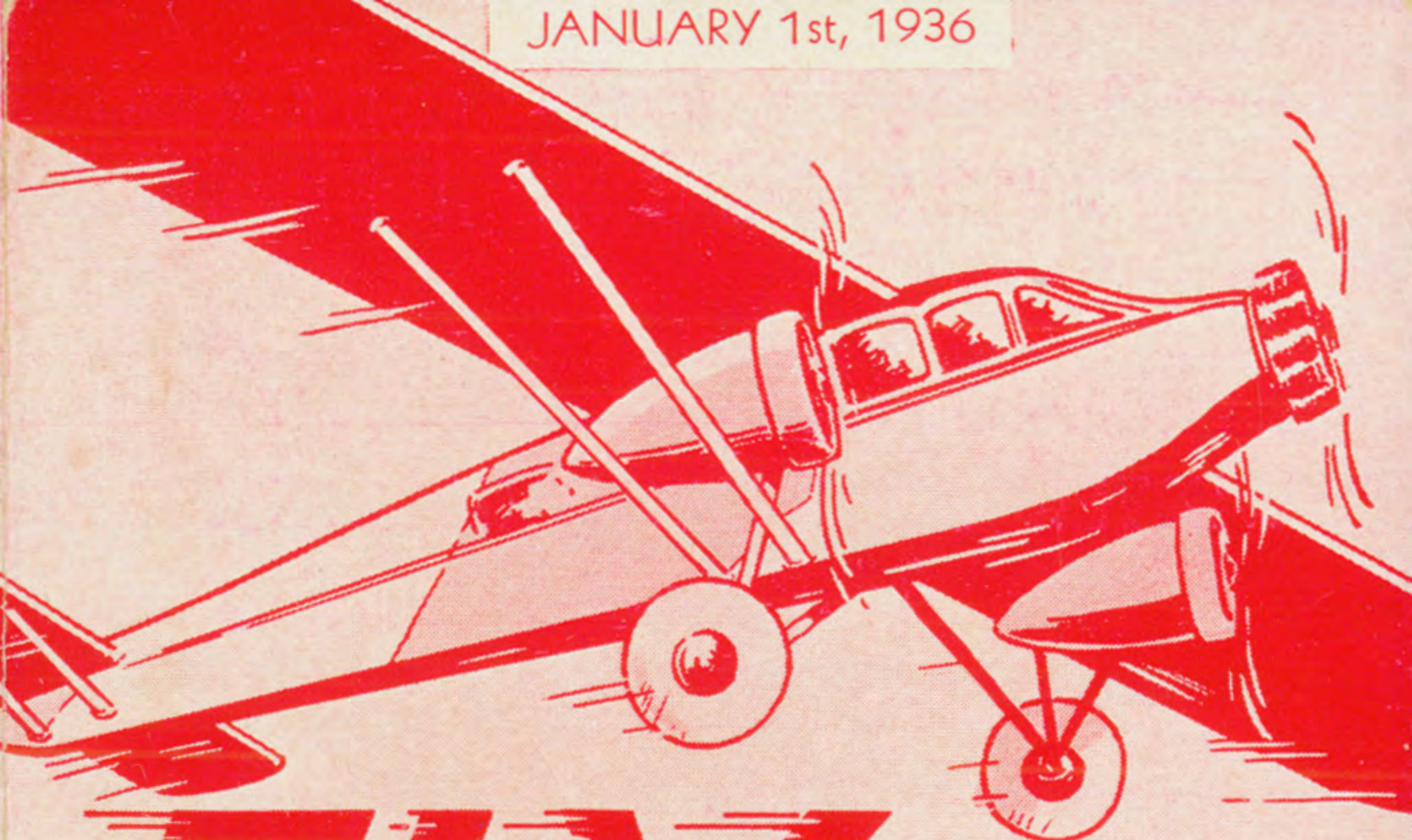


JANUARY 1st, 1936



FLY

for
BUSINESS
or **RECREATION**

**HEATED
PLANES**

YEAR
ROUND
SERVICE
TO
NORTHERN
NEW
ENGLAND

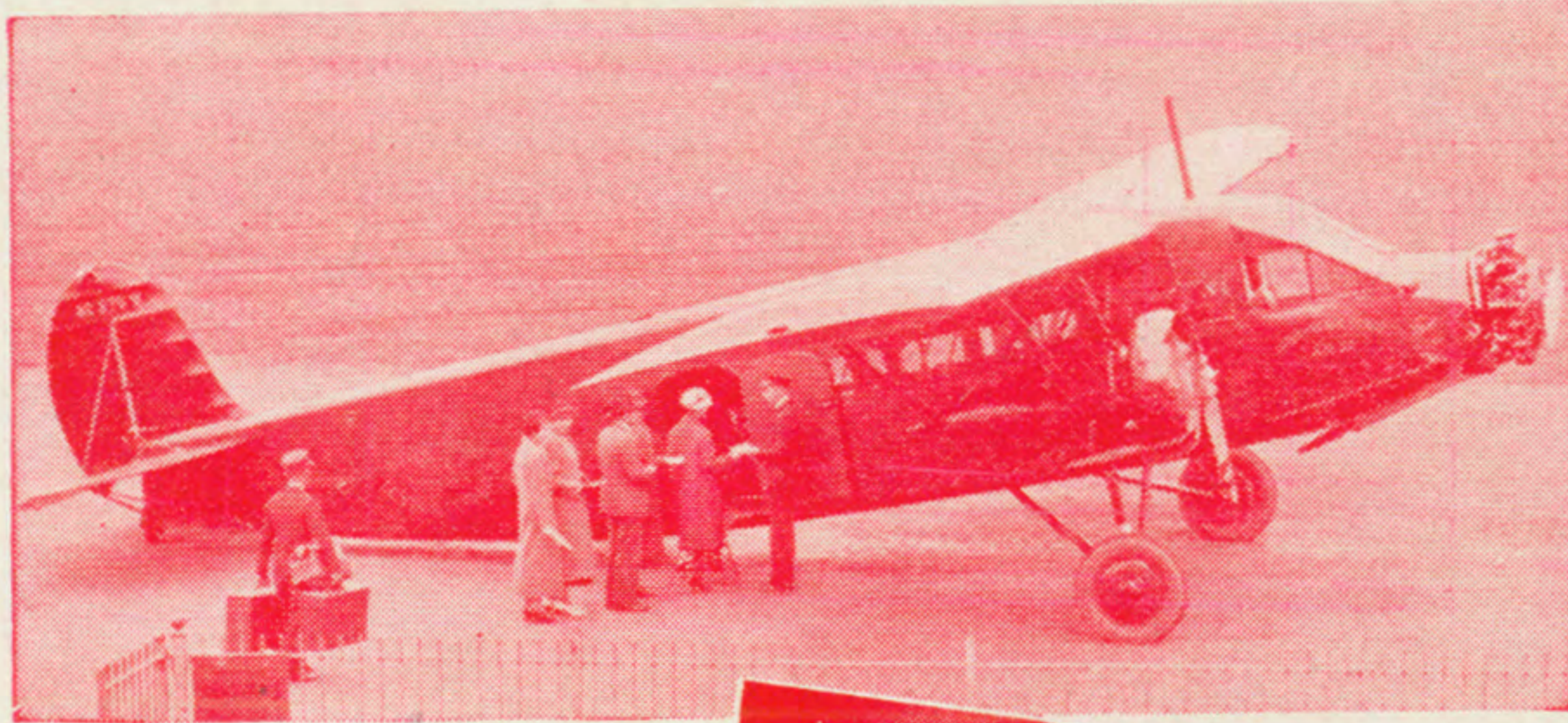
**LOW
WINTER
RATES**



**PASSENGERS
AIR EXPRESS
U.S. MAIL**



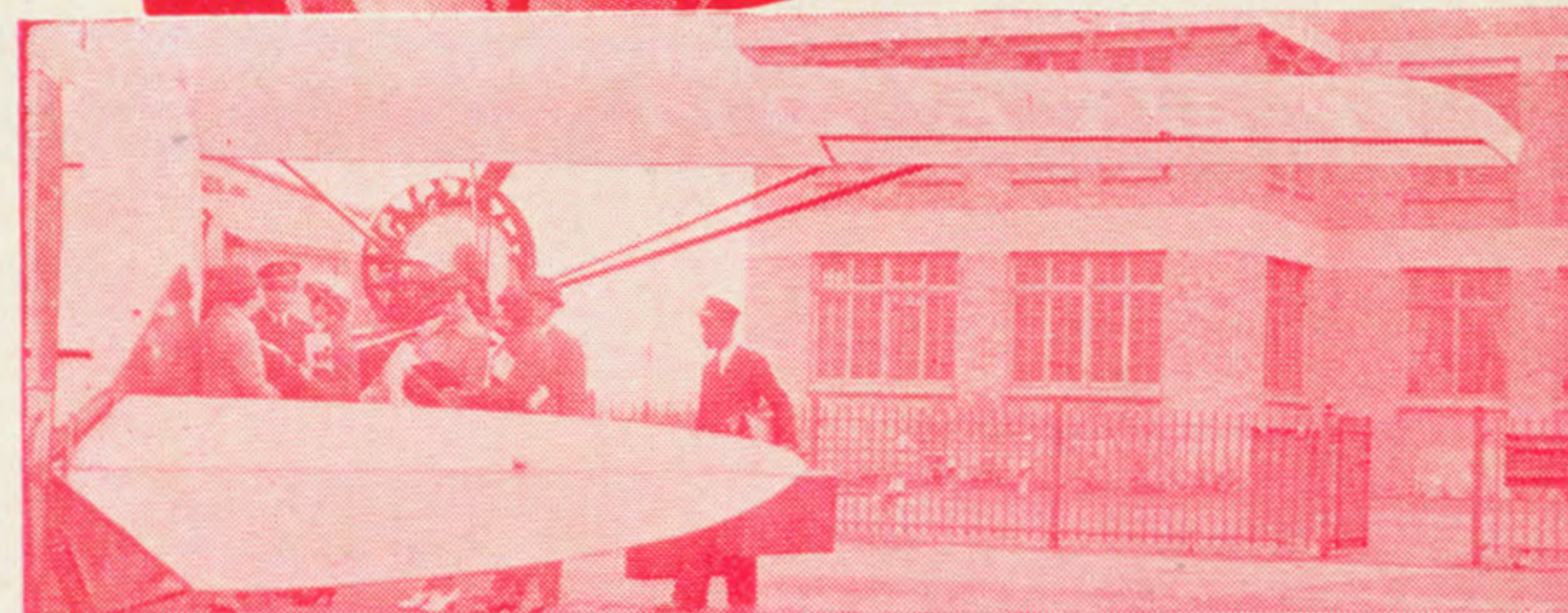
BOSTON-MAINE CENTRAL VERMONT AIRWAYS



Pilots of the Boston-Maine, Central Vermont Airways are picked because of their training and experience. Radio equipment affords constant communication with ground stations. The trimotored planes fly fully loaded on any two motors.



The cabin accommodates ten passengers. Controlled heat and individual ventilation assures comfortable temperatures at all times. Fares are so reasonable that almost everyone can afford the luxury and speed of plane travel.



Read Down		AMERICAN AIRLINES		Read Up	
Daily A.M.	Daily A.M.	(Connecting Service) Airport to Airport		Daily P.M.	Daily P.M.
10.00	7.15	Lv. NEW YORK	Ar.	7.25	2.39
Ex. Sun. & Hol.	7.59	Lv. NEW HAVEN	Lv.		
	8.30	Lv. HARTFORD	Lv.		1.11
11.27	9.15	Ar. BOSTON	Lv.	5.45	12.45

Fares: BOSTON-NEW YORK \$13.90 One Way \$25.02 Round Trip

INFORMATION, RESERVATIONS, TICKETS

BOSTON, MASS.	North Station Cent. Vt. Ry., 186 Tremont St	Capitol 1400 Hubbard 2365
PORTLAND, ME	Union Station City Ticket Office	Portland 2-0104 Portland 2-3745
AUGUSTA, ME.	Railroad Station	Augusta 2053
WATERVILLE, ME.	Railroad Station	Waterville 42
BANGOR, ME.	Railroad Station Airport. On Sundays Phone	Bangor 7304 Bangor 3534
BAR HARBOR, Me.	Railroad Ticket Office	Bar Harbor 843
ELLSWORTH, ME.	Railroad Station	Ellsworth 390
MANCHESTER, NH.	Railroad Station	Manchester 367
CONCORD, N. H.	Railroad Station	Concord 60
WHITE RIVER JCT VERMONT	Railroad Station B. & M. Ticket Office, Dartmouth College	White River Jct. 179 Hanover 100
MONTPELIER, BARRE, VT.	Railroad Station, Montpelier Railroad Station, Barre	Montpelier 14 Barre 580
BURLINGTON, VI.	C. V.-B. R. T. Terminal	Burlington 3610
MONTREAL, P. Q.	C. V. City Office 384 St. James St.	Marquette 7316
NEW YORK CITY	60 East 42nd St. 673 Fifth Ave.	Vanderbilt 3-1580 Wickersham 2-3200

Or any agent of the Boston and Maine and Maine Central Railroads or Central Vermont Railway, any Tourist or Travel Bureau or Hotel Porter. All seats are reserved. Reservations will be accepted only on purchase of ticket or exchange order.

Any Western Union or Postal Telegraph Office will arrange air reservations and deliver tickets without extra charge.

BAGGAGE

Thirty five pounds of baggage will be carried free on each ticket. When weight allowance will permit, baggage in excess of thirty-five pounds will be carried and charged for at excess rates.

SHIP BY AIR EXPRESS

Minimum shipment 3/4 pound—85c.; 1 pound—\$1.00. Door to door pick up and delivery service, no additional charge.

For complete rates and information, phone or address: Railway Express Agency, Air Express Division or any Western Union Office—package pick up by messenger with no extra cost.

USE AIR MAIL

Tomorrow's Mail Today

Received First—Answered First
Six cents for the first ounce and each additional ounce.
Air mail closing times listed on Pages 3 and 4.

J. V. SHEEHAN

General Passenger Agent

W. O. WRIGHT, Traffic Manager Boston-Maine Airways, Inc. T. E. P. PRINGLE, Traffic Manager Central Vermont Airways, Inc. BOSTON, MASS.

AIRLINES CONSOLIDATED TICKET OFFICE, Inc.

ELD. 5-2301

41 EAST 47th ST., NEW YORK

Printed In U. S. A.—1-1-36-10M



FLY for BUSINESS or RECREATION

HEATED PLANES

YEAR ROUND SERVICE TO NORTHERN NEW ENGLAND

LOW WINTER RATES



PASSENGERS AIR EXPRESS U.S. MAIL



BOSTON-MAINE CENTRAL VERMONT AIRWAYS

FLY--SAVE TIME

-- SAVE MONEY WINTER REDUCTION IN ROUND TRIP RATES

DAILY SERVICE
PASSENGERS—MAIL—EXPRESS

Consult Agents for connecting schedules of other lines which provide through direct connections on All-Air or Air-Rail service between points on

BOSTON - MAINE AIRWAYS CENTRAL VERMONT AIRWAYS

and important off-line cities, a few of which are listed below

New York	Chicago
Washington	Los Angeles
Atlanta	San Francisco
Miami	

Winter Flying Is Pleasant

Boston-Maine-Central Vermont Airways will fly 50% more miles each month this winter than last. Winter flying in heated planes is like riding in Pullman Cars, Comfortable, Warm and Safe.

USE --- U. S. AIR MAIL
Received First — Answered First

Boston - Maine Airways INC.

In association with NATIONAL AIRWAYS INC.

Read Down No. 6		E. Standard Time		Read Up No. 5 No. 1	
Ex.Sun & Hol.	Daily	Miles	MAINE LINE Schedules—Airport to Airport		Ex.Sun. & Hol.
+P.M.	A.M.		Lv.★BOSTON	Ar.	+A.M. P.M.
1.05	9.45		Lv.★BOSTON	Ar.	11.30 4.55
2.10	10.50	96	Lv. PORTLAND, ME.	Lv.	10.35 4.00
2.45	11.25	149	Lv. AUGUSTA, ME.	Lv.	9.55 3.20
3.05	11.45	166	Lv. WATERVILLE, ME.	Lv.	9.35 3.00
3.30	12.10	212	Ar. BANGOR, ME.	Lv.	9.00 2.25

All trips carry passengers, mail and express
+ Will not operate February 22
All schedules subject to change without notice

SPECIAL WINTER FARES

Fares Airport to Airport		Boston	Port-land	Augusta	Water-ville
PORTLAND	One Way Round Trip	\$5.80 8.60	Round Trip Tickets Good for Return on or before April 30, 1936		
AUGUSTA	One Way Round Trip	8.90 13.40	\$3.20 4.80		
WATERVILLE	One Way Round Trip	9.90 14.90	4.10 6.40	\$2.50 4.50	
BANGOR	One Way Round Trip	12.60 19.00	6.90 10.50	3.80 5.70	\$2.80 4.50

TRANSPORTATION TO AND FROM AIRPORTS

AT BOSTON

Air mail closes at Post-Office, Trip 2, 8.55 A.M., Trip 6, 12.15 P.M.
★ Special Packard Limousine for plane connections.
Leaves Statler Hotel at 9.20 A.M., 12.40 P.M.; North Station and Hotel Manger at 9.30 A.M., 12.50 P.M. and connects at Airport with inbound planes.
Fare, Fifty Cents

AT PORTLAND

Air mail closes at Post-Office, Trip 2, 10.30 A.M., Trip 6, 1.50 P.M., Trip 5, 10.10 A.M., Trip 1, 3.35 P.M.
Between Stroudwater Airport and Union Station, Eastland Hotel or the Lafayette. Town Taxi.
Taxis leave for Airport 15 minutes before scheduled plane departure.
Fare, Fifty Cents

AT AUGUSTA

Air mail closes at Post-Office, Trip 2, 10.55 A.M., Trip 6, 2.15 P.M., Trip 5, 9.25 A.M., Trip 1, 2.50 P.M.
Between Airport and business center. Call Leo's Taxi, Augusta 670.
Running time 15 minutes.
Fare, Fifty Cents

AT WATERVILLE

Air mail closes at Post-Office, Trip 2, 11.15 A.M., Trip 6, 2.35 P.M., Trip 5, 9.05 A.M., Trip 1, 2.30 P.M.
Between Airport and Railroad Station and 95 Main Street. Testa's Taxi Service. Taxis leave for Airport 30 minutes before scheduled plane departure. Phone Waterville 1822 or 42. Fare, Forty Cents

AT BANGOR

Air mail closes at Post-Office, Trip 5, 8.30 A.M., Trip 1, 1.55 P.M.
Between Airport and Maine Central Railroad Station and Bangor House. Kane's Taxi. Taxis leave for Airport 20 minutes before scheduled plane departure. Phone Bangor 7304. Fare, Fifty Cents

Central Vermont Airways INC.

No. 4 Read Down		E. Standard Time		Read Up No. 3	
Daily	Miles	N. H.-VT. LINE Schedules—Airport to Airport		Daily	
A.M.		Lv.★BOSTON	Ar.	P.M.	
9.50		Lv.★BOSTON	Ar.	5.00	
10.25	43	Lv. MANCHESTER, N. H.	Lv.	4.35	
10.45	62	Lv. CONCORD, N. H.	Lv.	4.15	
11.25	113	Lv. WHITE RIVER JCT., VT. (Dartmouth College)	Lv.	3.40	
11.55	153	Lv. MONTPELIER-BARRE, VT.	Lv.	3.10	
12.15	191	Ar. BURLINGTON, VT.	Lv.	2.40	

Nos. 3 and 4 carry passengers, mail and express.

ALL TIMES SHOWN ARE EASTERN STANDARD TIME

SPECIAL WINTER FARES

Fares Airport to Airport		Boston	Man-chester, N. H.	Con-cord, N. H.	White River Jct.	Mont-pel-ier-Barre
Manchester	One Way Round Trip	\$2.70 4.50	Round Trip Tickets Good for Return on or before April 30, 1936.			
Concord	One Way Round Trip	3.90 5.60				
Wh. River Jct.,	One Way Round Trip	6.90 10.20	\$4.30 6.40	\$3.10 4.60		
Mont-Barre	One Way Round Trip	9.30 13.80	6.70 10.00	5.50 8.20	\$2.50 4.50	
Burlington	One Way Round Trip	11.50 17.20	8.90 13.40	7.70 11.70	4.60 7.10	\$2.50 4.50

AT MANCHESTER

Air mail closes at Post-Office, Trip 4, 9.40 A.M., Trip 3, 3.50 P.M.
Between Airport & Manchester Sta. or Carpenter Hotel, call Checker Cab, phone Man. 90. Running time 15 minutes. Fare, Fifty Cents

AT CONCORD

Air mail closes at Post Office, Trip 4, 10.25 A.M., Trip 3, 3.55 P.M.
Between Airport and business center, call Yellow Cab Co.
Phone Concord 2200. Running time 20 minutes. Fare, Fifty Cents

AT WHITE RIVER JCT.

Air mail closes at Post-Office, Trip 4, 11.10 A.M., Trip 3, 3.25 P.M.
Between Airport and Coolidge Hotel. Call Coolidge Garage Taxi Service, phone White River Junction 94. Running time 15 minutes.
Between Airport and Hanover Inn. Call Thorburn, phone Hanover 190-W. Running time 25 minutes.
Between Airport and Rogers Hotel, Lebanon, N. H. Clark's Taxi Service, phone Lebanon 6. Running time 20 mins. Fare, Fifty Cents

AT BURLINGTON

Air mail closes at Post-Office, 2.10 P.M.
Between Airport and C. V.-B. R. T. Terminal opp. City Hall Park.
Phone Burlington 3610. Running time 15 minutes. Fare, Fifty Cents

AT MONTPELIER-BARRE

Air Mail closes at Post-Office, Trip 4, 11.25 A.M., Trip 3, 2.40 P.M.
Between Airport and business center Montpelier. Phone Montpelier 14. Running time 25 minutes.
Between Airport and business center Barre. Phone Barre 580. Running time 25 minutes. Fare Fifty Cents