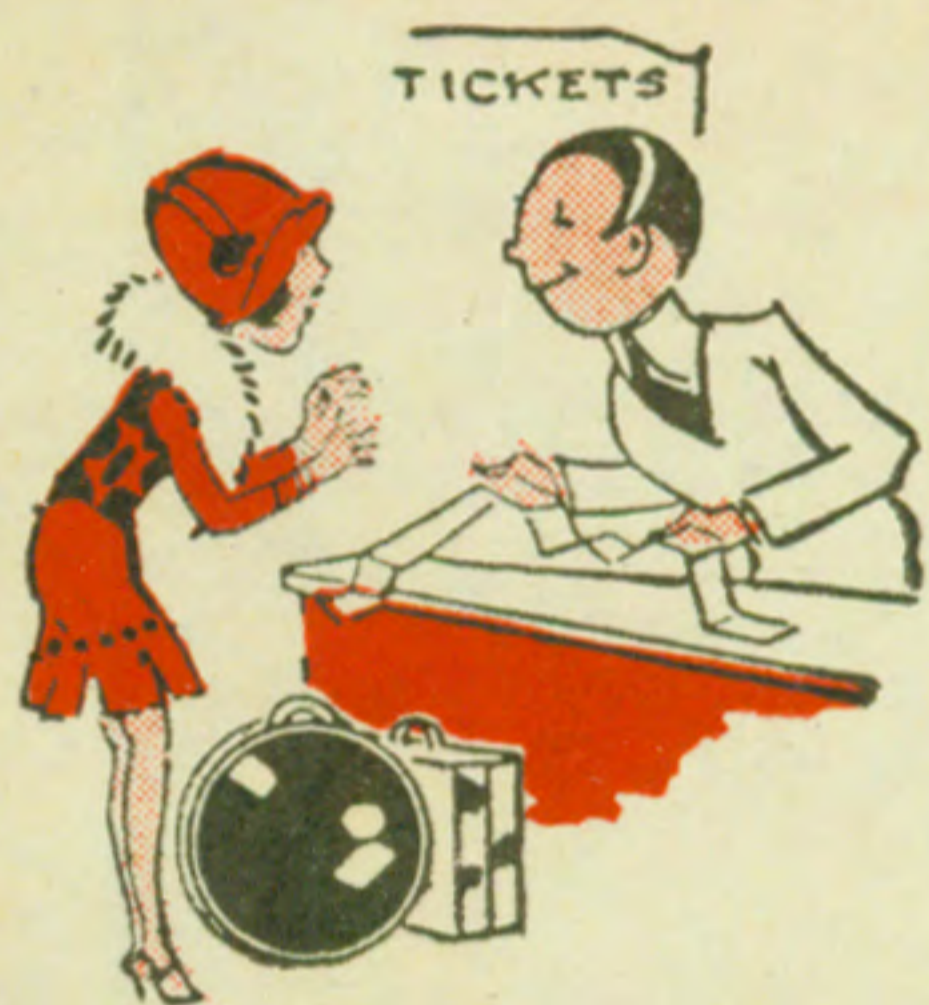


July 20, 1936  
Eastern Standard Time

# BOSTON-MAINE AIRWAYS CENTRAL VERMONT AIRWAYS



**AIR TICKETS**  
— AND —  
**RESERVATIONS**  
ON ALL AIRLINES

**AIRLINES TICKET AGENCY**  
OF E. K. SMITH, Inc. — 41 E. 47th ST.

**ELdorado 5-2300**



**"Always On Time"**

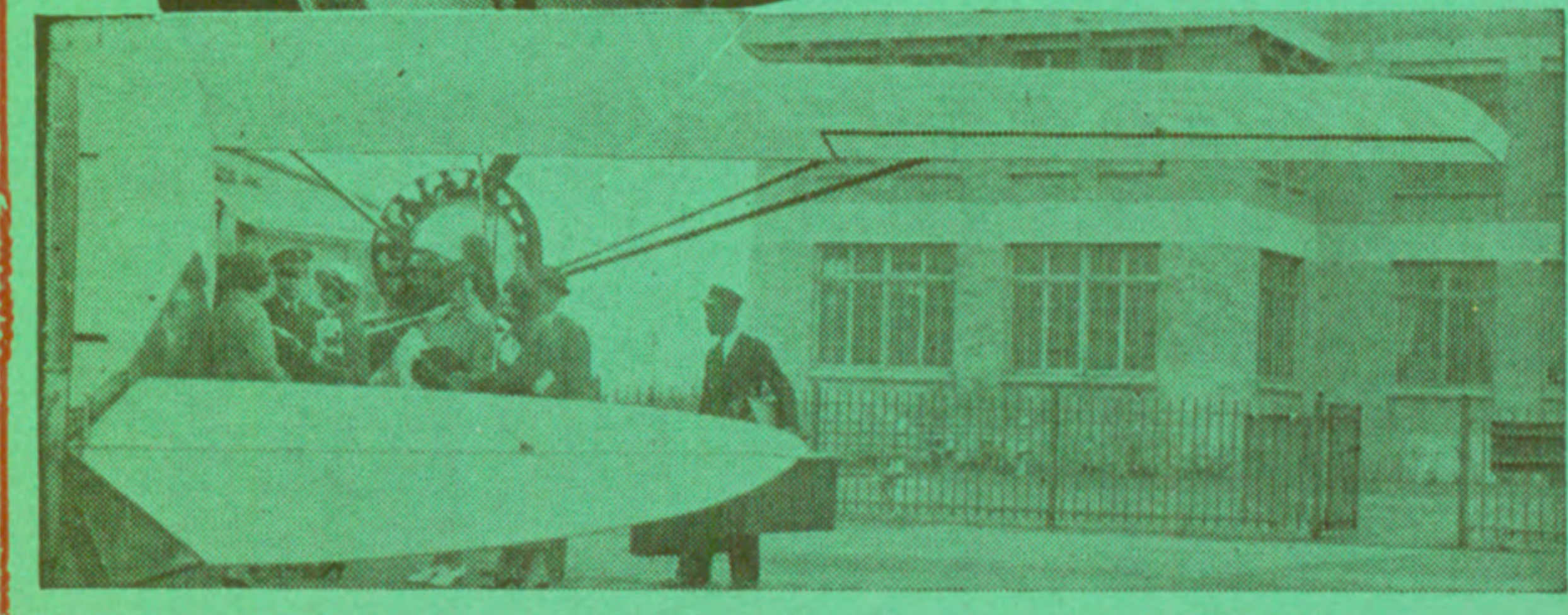
# BOSTON-MAINE AIRWAYS CENTRAL VERMONT AIRWAYS



Pilots of the Boston-Maine, Central Vermont Airways are picked because of their training and experience. Radio equipment affords constant communication with ground stations. The trimotored planes fly fully loaded on any two motors.



The cabin accommodates ten passengers. Controlled and individual ventilation assures comfortable temperatures at all times. Fares are so reasonable that almost everyone can afford the luxury and speed of plane travel.



Read Down		AMERICAN AIRLINES		Read Up	
Ex. Sun. P.M.	Daily P.M.	Daily A.M.	(Connecting Service) Airport to Airport	Daily A.M.	Daily P.M.
1.10	1.00	7.00	Lv. NEW YORK (Newark Airport)	Ar. 11.39	9.54
1.47			Lv. NEW HAVEN	Lv.	
2.07			Lv. HARTFORD	Lv.	
3.03	2.18	8.18	Ar. BOSTON	Lv. 10.15	8.30

Fares: BOSTON-NEW YORK \$13.90 One Way \$25.00 Round Trip

INFORMATION, RESERVATIONS, TICKETS

BOSTON, MASS.	North Station Cent. Vt. Ry., 186 Tremont St	Capitol 1400 Hubbard 2365
PORTLAND, ME.	Union Station City Ticket Office	Portland 2-0104 Portland 2-3745
AUGUSTA, ME.	Railroad Station	Augusta 2053
WATERVILLE, ME.	Railroad Station	Waterville 42
BANGOR, ME.	Railroad Station Airport. On Sundays Phone	Bangor 7304 Bangor 3534
BAR HARBOR, ME.	Railroad Ticket Office	Bar Harbor 843
ELLSWORTH, ME.	Railroad Station	Ellsworth 390
MANCHESTER, N.H.	Railroad Station	Manchester 367
CONCORD, N.H.	Railroad Station	Concord 60
WHITE RIVER JCT. VERMONT	Railroad Station B. & M. Ticket Office Dartmouth College	White River Jct. 179 Hanover 100
MONTPELIER, BARRE, VT.	Railroad Station, Montpelier Railroad Station, Barre	Montpelier 14 Barre 580
BURLINGTON, VT.	C. V.-B. R. T. Terminal	Burlington 3610
MONTREAL P. Q.	C. V. City Office 384 St. James St.	Marquette 7316
NEW YORK CITY	60 East 42nd St. 673 Fifth Ave.	Vanderbilt 3-1580 Wickersham 2-3200

Or any agent of the Boston and Maine and Maine Central Railroads or Central Vermont Railway, any Tourist or Travel Bureau or Hotel Porter. All seats are reserved. Reservations will be accepted only on purchase of ticket or exchange order.

Any Western Union or Postal Telegraph Office will arrange air reservations and deliver tickets without extra charge.

BAGGAGE

Thirty-five pounds of baggage will be carried free on each ticket. When weight allowance will permit, baggage in excess of thirty-five pounds will be carried and charged for at excess rates.

SHIP BY AIR EXPRESS

Minimum shipment 3/4 pound—85c.; 1 pound—\$1.00. Door to door pick up and delivery service, no additional charge.

For complete rates and information, phone or address: Railway Express Agency, Air Express Division or any Western Union Office—package pick up by messenger with no extra cost.

USE AIR MAIL

Tomorrow's Mail Today

Received First—Answered First  
Six cents for the first ounce and each additional ounce.  
Air mail closing times listed on Pages 3 and 4.

J. V. SHEEHAN

General Passenger Agent  
W. O. WRIGHT, Traffic Manager Boston-Maine Airways, Inc.  
T. E. P. PRINGLE, Traffic Manager Central Vermont Airways, Inc. BOSTON, MASS.

AIRLINES TICKET AGENCY OF E. K. SMITH, INC.  
EL DORADO 5-2300  
NEW YORK

**AIR TICKETS**  
— AND —  
**RESERVATIONS**  
ON ALL AIRLINES  
AIRLINES TICKET AGENCY  
OF E. K. SMITH, Inc. — 41 E. 47th ST.  
**ELdorado 5-2300**



# FLY—SAVE TIME

*Inexpensive—Scenic  
—Clean—Cool  
—Comfortable*

Consult Agents for connecting schedules of other lines which provide through direct connections on All-Air or Air-Rail service between points on

## BOSTON-MAINE AIRWAYS CENTRAL VERMONT AIRWAYS

and important off-line cities, a few of which are listed below

New York  
Washington  
Atlanta  
Chicago  
Los Angeles  
San Francisco  
Cleveland

### AIR EXPRESS

"The fastest way to rush packages and shipments. Call the Railway Express Agency for information on new low rates."

**USE --- U. S. AIR MAIL  
Received First—Answered First**

## Boston - Maine Airways Inc.

In association with NATIONAL AIRWAYS, INC.

Read Down No. 6		E. Standard Time		Read Up No. 5 No. 1	
Ex.Sun. & Hol. †P.M.	Daily A.M.	Miles	MAINE LINE Schedules—Airport to Airport		Daily P.M.
3.00	8.55		Lv. ★BOSTON	Ar.	9.25 6.55
4.05	10.00	96	Lv. PORTLAND, ME.	Lv.	8.25 5.55
4.40	10.35	149	Lv. AUGUSTA, ME.	Lv.	7.45 5.15
4.55	10.50	166	Lv. WATERTOWN, ME.	Lv.	7.30 5.00
5.20	11.15	212	Ar. BANGOR, ME.	Lv.	7.00 4.30
	11.30	245	Lv. BANGOR, ME.	Ar.	4.15
	11.50		Ar. BAR HARBOR, ME.	Lv.	3.55

All trips carry passengers, mail and express  
All schedules subject to change without notice  
†Will not operate Sept. 7.

### LOW ROUND TRIP FARES

Fares Airport to Airport	Boston	Port- land	Augusta	Water- ville	Bangor
PORTLAND One Way Round Trip	\$5.80 10.50	Round Trip Tickets Good for Return Any Time			
AUGUSTA One Way Round Trip	8.90 16.10	\$3.20 5.80			
WATERTOWN One Way Round Trip	10.00 18.00	4.20 7.60	\$2.50 4.50		
BANGOR One Way Round Trip	12.80 23.10	7.00 12.60	3.80 6.90	\$2.80 5.00	
BAR HARBOR One Way Round Trip	14.70 26.50	8.90 16.10	5.80 10.50	4.80 8.70	\$2.50 4.50

### TRANSPORTATION TO AND FROM AIRPORTS AT BOSTON

Air mail closes at Post-Office, Trip 2, 8.05 A.M., Trip 6, 2.10 P.M.  
★Special Packard Limousine for plane connections.  
Leaves Statler Hotel at 8.25 A.M., 2.30 P.M., North Station and Hotel Manger at 8.35 A.M., 2.40 P.M. and connects at Airport with inbound planes. **Fare, Fifty Cents**

### AT PORTLAND

Air mail closes at Post-Office, Trip 2, 9.40 A.M., Trip 6, 3.45 P.M.  
Trip 5, 8.00 A.M., Trip 1, 5.30 P.M.  
Between Stroudwater Airport and Union Station, Eastland Hotel or the Lafayette. Town Taxi. **Fare, Fifty Cents**  
Taxis leave for Airport 15 minutes before scheduled plane departure.

### AT AUGUSTA

Air mail closes at Post-Office, Trip 2, 10.05 A.M., Trip 6, 4.10 P.M.  
Trip 5, 7.15 A.M., Trip 1, 4.45 P.M.  
Between Airport and business center. Call North Taxi, Augusta 220. Running time 15 minutes. **Fare, Fifty Cents**

### AT WATERTOWN

Air mail closes at Post-Office, Trip 2, 10.20 A.M., Trip 6, 4.25 P.M.  
Trip 5, 7.00 A.M., Trip 1, 4.30 P.M.  
Between Airport and Railroad Station and 95 Main Street. Testa's Taxi Service. Taxis leave for Airport 30 minutes before scheduled plane departure. Phone Waterville 1822 or 42. **Fare, Forty Cents**

### AT BANGOR

Air mail closes at Post-Office, Trip 5, 6.30 A.M., Trip 1, 3.45 P.M.  
Between Airport and Maine Central Railroad Station and Bangor House. Kane's Taxi. Taxis leave for Airport 20 minutes before scheduled plane departure. Phone Bangor 7304. **Fare, Fifty Cents**

### AT BAR HARBOR AND ELLSWORTH

Between Airport and Maine Central Railroad ticket offices (phone Bar Harbor 843, Ellsworth 390). Limousines for plane connection leave Maine Central Railroad ticket offices 30 minutes before plane's departure. **Fare, One Dollar**

## Central Vermont Airways Inc.

No. 4 Read Down		E. Standard Time		Read Up No. 3	
Daily A.M.	Miles	N. H.-VT. LINE Schedules—Airport to Airport		Daily P.M.	
9.00		Lv. ★BOSTON	Ar.	6.40	
9.35	43	Lv. MANCHESTER, N. H.	Lv.	6.15	
9.50	62	Lv. CONCORD, N. H.	Lv.	6.00	
10.25	113	Lv. WHITE RIVER JCT., VT. (Dartmouth College)	Lv.	5.30	
†10.55	153	Lv. MONTPELIER-BARRE, VT.	Lv.	†5.00	
11.15	191	Ar. BURLINGTON, VT.	Lv.	4.35	

Nos. 3 and 4 carry passengers, mail and express.

†Service to be resumed about August 15th.

ALL TIMES SHOWN ARE EASTERN STANDARD TIME

### LOW ROUND TRIP FARES

Fares Airport to Airport	Boston	Man- chester, N. H.	Con- cord, N. H.	White River Jct.	Mont- pelier- Barre
Manchester One Way Round Trip	\$2.60 4.70	Round Trip Tickets Good for Return Any Time			
Concord One Way Round Trip	3.80 6.90				
Wh. River Jct., One Way Round Trip	6.80 12.30	\$4.20 7.60	\$3.10 5.60		
Mont-Barre One Way Round Trip	9.20 16.60	6.80 12.30	5.50 9.90	\$2.50 4.50	
Burlington One Way Round Trip	11.50 20.70	8.90 16.10	7.70 13.90	4.60 8.30	\$2.50 4.50

### AT MANCHESTER

Air mail closes at Post-Office, Trip 4, 8.50 A.M., Trip 3, 5.30 P.M.  
Between Airport & Manchester Sta. or Carpenter Hotel, call Checker Cab, phone Man. 90. Running time 15 minutes. **Fare, Fifty Cents**

### AT CONCORD

Air mail closes at Post Office, Trip 4, 9.30 A.M., Trip 3, 5.40 P.M.  
Between Airport and business center, call Yellow Cab Co.  
Phone Concord 2200. Running time 20 minutes. **Fare, Fifty Cents**

### AT WHITE RIVER JCT.

Air mail closes at Post-Office, Trip 4, 10.10 A.M., Trip 3, 5.15 P.M.  
Between Airport and Coolidge Hotel. Call Coolidge Garage Taxi Service, phone White River Junction 94. Running time 15 minutes. **Fare, Fifty Cents**  
Between Airport and Hanover Inn. Call Thorburn, phone Hanover 190-W. Running time 25 minutes. **Fare, One Dollar**  
Between Airport and Rogers Hotel, Lebanon, N. H. Clark's Taxi Service, phone Lebanon 6. Running time 20 mins. **Fare, Fifty Cents**

### AT MONTPELIER-BARRE

Air Mail closes at Post-Office, Trip 4, 10.25 A.M., Trip 3, 4.35 P.M.  
Between Airport and business center Montpelier. Phone Montpelier 14. Running time 25 minutes. **Fare, Fifty Cents**  
Between Airport and business center Barre. Phone Barre 580. Running time 25 minutes. **Fare, Fifty Cents**

### AT BURLINGTON

Air mail closes at Post-Office, 4.05 P.M.  
Between Airport and C. V.-B. R. T. Terminal opp. City Hall Park. Phone Burlington 3610. Running time 15 minutes. **Fare, Fifty Cents**