

October 24, 1936

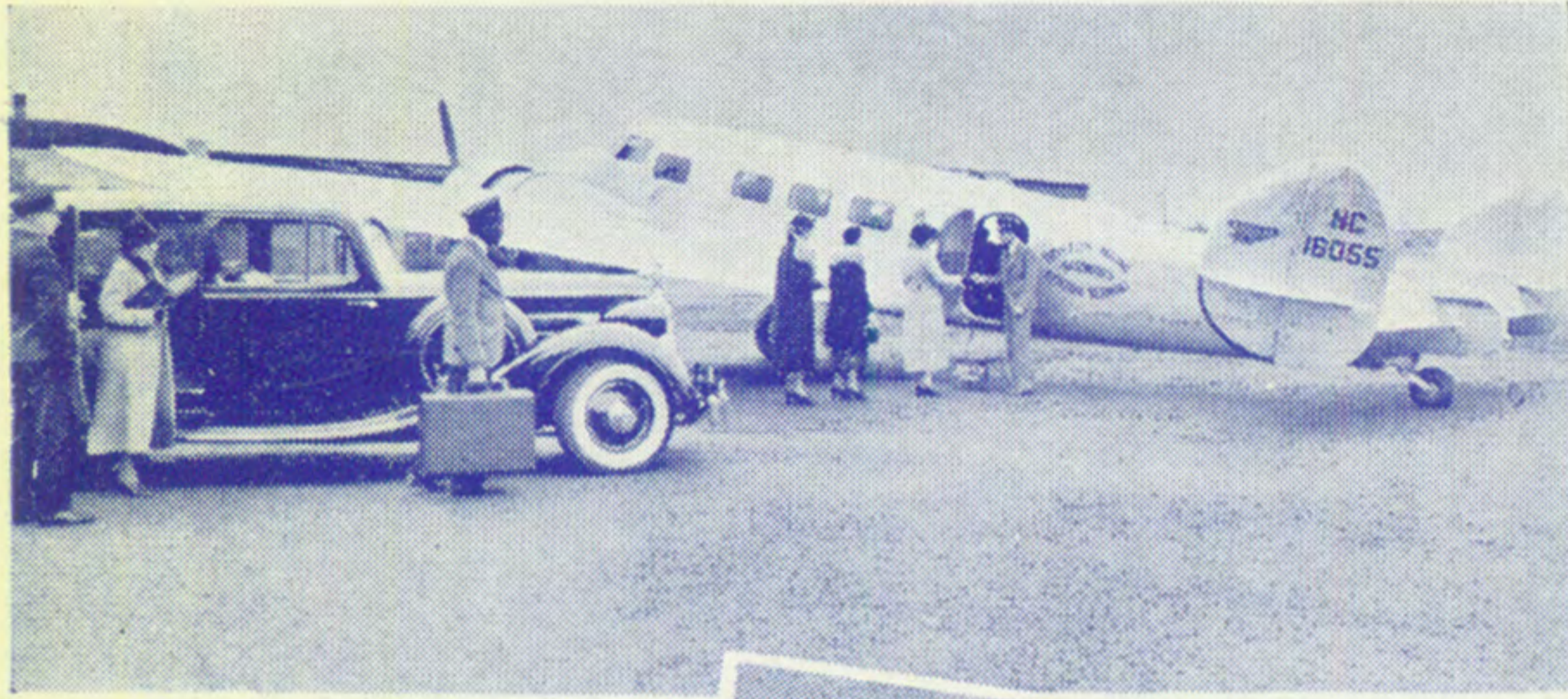
# BOSTON-MAINE CENTRAL VERMONT AIRWAYS



PASSENGERS  
AIR EXPRESS  
U.S. MAIL



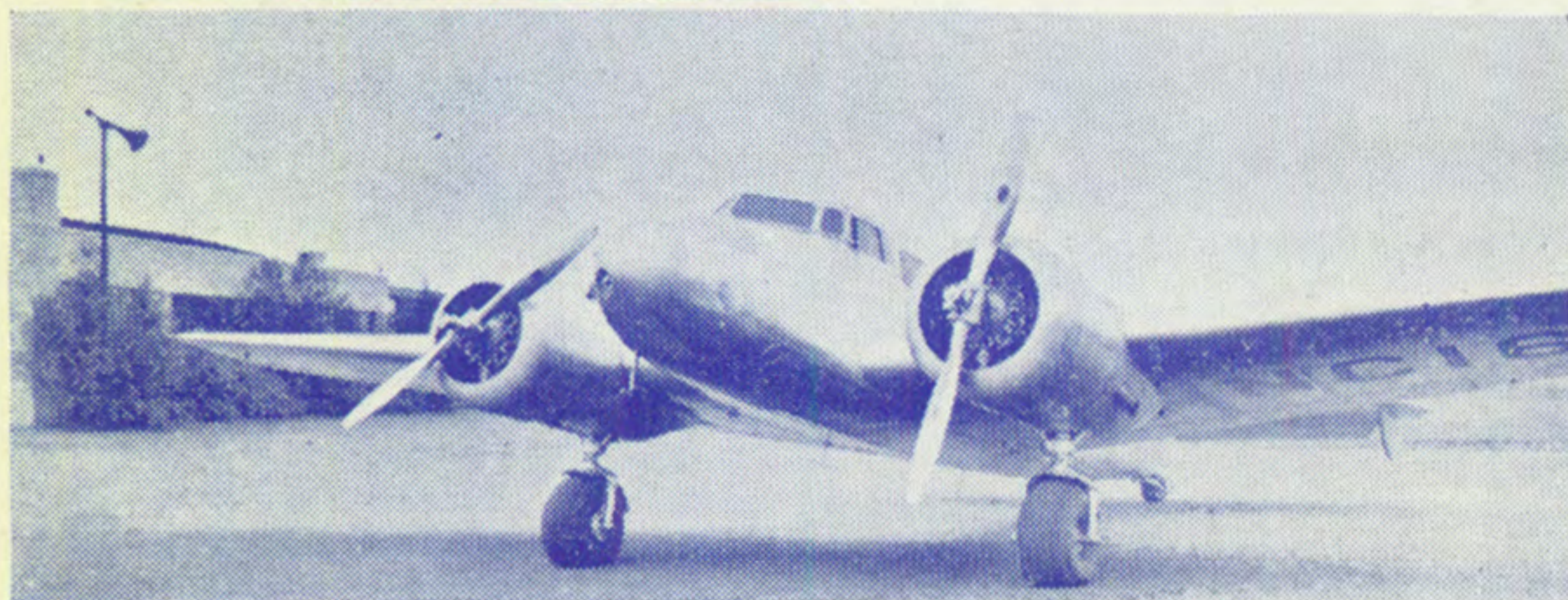
## SAFE-SURE TRAVEL



New Lockheed Electra planes. Two pilots, 2-way radio. Constant communication between ground and ship affords immediate bulletins of any weather changes. Ships equipped with all latest safety and flying devices.



Luxurious cabin accommodations for 10 passengers. Individual reading light and ventilator at each seat. Planes can take off and fly on either of two powerful motors.



Read Down		AMERICAN AIRLINES		Read Up	
Daily P.M.	Daily A.M.	(Connecting Service) Airport to Airport		Daily P.M.	Daily P.M.
10.30	7.00	Lv. NEW YORK (Newark Airport)	Ar.	2.14	7.35
		Lv. NEW HAVEN	Lv.		6.54
		Lv. HARTFORD	Lv.		6.28
11.48	8.18	Ar. BOSTON	Lv.	12.50	5.15
					5.30

Fares: BOSTON-NEW YORK \$13.90 One Way \$25.00 Round Trip

**INFORMATION, RESERVATIONS, TICKETS**

BOSTON, MASS.	North Station Cent. Vt. Ry., 186 Tremont St	Capitol 1400 Hubbard 2365
BOSTON, MASS.	Airport,	East Boston 2500
PORTLAND, ME.	Union Station City Ticket Office	Portland 2-0104 Portland 2-3745 Portland 4-4224
PORTLAND, ME.	Airport	Portland 4-4224
AUGUSTA, ME.	Railroad Station	Augusta 2053
AUGUSTA, ME.	Airport	Augusta 1676-W
WATERVILLE, ME.	Railroad Station	Waterville 42
WATERVILLE, ME.	Airport	Waterville 1816
BANGOR, ME.	Railroad Station	Bangor 7304
BANGOR, ME.	Airport	Bangor 3534
BAR HARBOR, ME.	Railroad Ticket Office	Bar Harbor 843
ELLSWORTH, ME.	Railroad Station	Ellsworth 390
MANCHESTER, N.H.	Railroad Station	Manchester 367
MANCHESTER, N. H.	Airport	Manchester 7860
CONCORD, N.H.	Railroad Station	Concord 60
CONCORD, N. H.	Airport	Concord 3156
WHITE RIVER JCT.	Railroad Station	White River Jct. 179
WHITE RIVER JCT., VERMONT	VT. Airport B. & M. Ticket Office Dartmouth College	White River Jct. 115 Hanover 100
MONTPELIER, BARRE, VT.	Railroad Station, Montpelier	Montpelier 14
BARRE-MONTPELIER, VT.	Railroad Station, Barre	Barre 580
BURLINGTON, VT.	VT. Airport	Barre-Mont'plr 915
BURLINGTON, VT.	C. V.-B. R. T. Terminal	Burlington 3610
BURLINGTON, VT.	Airport	Burlington 780
MONTREAL P. Q.	C. V. City Office 384 St. James St.	Marquette 7316
NEW YORK CITY	60 East 42nd St. 673 Fifth Ave.	Vanderbilt 3-1580 Wickersham 2-3200

Or any agent of the Boston and Maine and Maine Central Railroads or Central Vermont Railway, any Tourist or Travel Bureau or Hotel Porter.  
All seats are reserved. Reservations will be accepted only on purchase of ticket or exchange order.

Any **Western Union** or **Postal Telegraph Office** will arrange air reservations and deliver tickets without extra charge.

**BAGGAGE**

Thirty-five pounds of baggage will be carried free on each ticket. When weight allowance will permit, baggage in excess of thirty-five pounds will be carried and charged for at excess rates.

**SHIP BY AIR EXPRESS**

Minimum shipment 3/4 pound—85c.; 1 pound—\$1.00. Door to door pick up and delivery service, no additional charge.

**Tomorrow's Mail Today**

Received First—Answered First  
J. V. SHEEHAN

General Passenger Agent

W. O. WRIGHT, Traffic Manager Boston-Maine Airways, Inc.  
T. E. P. PRINGLE, Traffic Manager Central Vermont Airways, Inc.  
BOSTON, MASS.

October 24, 1936

**BOSTON-MAINE  
CENTRAL VERMONT  
AIRWAYS**



**PASSENGERS  
AIR EXPRESS  
U.S. MAIL**



**SAFE-SURE  
TRAVEL**

# FLY—SAVE TIME

*Inexpensive—Scenic*  
*—Clean—Warm*  
*—Comfortable*

Consult Agents for connecting schedules of other lines which provide through direct connections on All-Air or Air-Rail service between points on

## BOSTON-MAINE AIRWAYS CENTRAL VERMONT AIRWAYS

and important off-line cities, a few of which are listed below

New York	Chicago
Washington	Los Angeles
Atlanta	San Francisco
Cleveland	

### AIR EXPRESS

"The fastest way to rush packages and shipments. Call the Railway Express Agency for information on new low rates."

**USE --- U. S. AIR MAIL**  
**Received First — Answered First**

## Boston - Maine Airways Inc.

Read Down		E. Standard Time		Read Up	
No. 6	No. 2			No. 5	No. 1
Ex.Sun. & Hol.	Daily	Miles	MAINE LINE		Ex.Sun. & Hol.
#P.M.	A.M.		Schedules—Airport to Airport		#P.M.
1.38	8.50		Lv. ★BOSTON	Ar.	12.12
2.19	9.31	96	Lv. PORTLAND, ME.	Lv.	11.34
2.44	9.56	149	Lv. AUGUSTA, ME.	Lv.	11.09
2.56	10.08	166	Lv. WATERTVILLE, ME.	Lv.	10.57
3.13	10.25	212	Ar. BANGOR, ME.	Lv.	10.35
					5.00
					4.22
					3.57
					3.45
					3.23

#Will not operate Nov. 26 or Dec. 25.

All trips carry passengers, mail and express  
 All schedules subject to change without notice

### LOW ROUND TRIP FARES

Fares	Boston	Port-land	Augusta	Water-ville
Portland One Way	\$5.80			
Portland Round Trip	10.50			
Augusta One Way	8.90	\$3.20		
Augusta Round Trip	16.10	5.80		
Waterville One Way	10.00	4.20	\$2.50	
Waterville Round Trip	18.00	7.60	4.50	
Bangor One Way	12.80	7.00	3.80	\$2.80
Bangor Round Trip	23.10	12.60	6.90	5.00

Round Trip Tickets Good for Return Any Time

### TRANSPORTATION TO AND FROM AIRPORTS

#### AT BOSTON

Air mail closes at Post-Office, Trip 2, 8.00 A.M., Trip 6, 12.48 P.M.  
 ★Special Packard Limousine for plane connections.  
 Leaves Statler Hotel at 8.20 A.M., 1.08 P.M., North Station and Hotel Manger at 8.30 A.M., 1.18 P.M.  
 Fare, Fifty Cents

#### AT PORTLAND

Air mail closes at Post-Office, Trip 2, 9.11 A.M., Trip 6, 1.59 P.M., Trip 5, 11.09 A.M., Trip 1, 3.57 P.M.  
 Between Stroudwater Airport and Union Station, Eastland Hotel or the Lafayette. Town Taxi.  
 Taxis leave for Airport 15 minutes before scheduled plane departure.  
 Fare, Fifty Cents

#### AT AUGUSTA

Air mail closes at Post-Office, Trip 2, 9.26 A.M., Trip 6, 2.14 P.M., Trip 5, 10.39 A.M., Trip 1, 3.27 P.M.  
 Between Airport and business center. Call North Taxi, Augusta 220. Running time 15 minutes.  
 Fare, Fifty Cents

#### AT WATERTVILLE

Air mail closes at Post-Office, Trip 2, 9.38 A.M., Trip 6, 2.26 P.M., Trip 5, 10.27 A.M., Trip 1, 3.15 P.M.  
 Between Airport and Railroad Station and 95 Main Street. Testa's Taxi Service. Taxis leave for Airport 30 minutes before scheduled plane departure. Phone Waterville 1822 or 42. Fare, Forty Cents

#### AT BANGOR

Air mail closes at Post-Office, Trip 5, 10.05 A.M., Trip 1, 2.38 P.M.  
 Between Airport and Maine Central Railroad Station and Bangor House. Kane's Taxi. Taxis leave for Airport 20 minutes before scheduled plane departure. Phone Bangor 7304. Fare, Fifty Cents

## Central Vermont Airways Inc.

No. 4 Read Down		E. Standard Time		Read Up No. 3	
Daily	Miles	N. H.-VT. LINE		Daily	
A.M.		Schedules Airport to Airport		P.M.	
8.55		Lv. ★BOSTON	Ar.	4.55	
9.17	43	Lv. MANCHESTER, N. H.	Lv.	4.38	
9.30	62	Lv. CONCORD, N. H.	Lv.	4.25	
9.55	113	Lv. WHITE RIVER JCT., VT. (Dartmouth College)	Lv.	4.00	
10.15	153	Lv. BARRE-MONTPELIER, VT.	Lv.	3.40	
10.29	191	Ar. BURLINGTON, VT.	Lv.	3.21	

ALL TIMES SHOWN ARE EASTERN STANDARD TIME

### LOW ROUND TRIP FARES

Fares	Boston	Man-chester, N. H.	Con-cord, N. H.	White River Jct.	Barre Mont-pelier
Manchester One Way	\$2.60				
Manchester Round Trip	4.70				
Concord One Way	3.80				
Concord Round Trip	6.90				
Wh. River Jct. One Way	6.80	\$4.20	\$3.10		
Wh. River Jct. Round Trip	12.30	7.60	5.60		
Barre-Mont One Way	9.20	6.80	5.50	\$2.50	
Barre-Mont Round Trip	16.60	12.30	9.90	4.50	
Burlington One Way	11.50	8.90	7.70	4.60	\$2.50
Burlington Round Trip	20.70	16.10	13.90	8.30	4.50

Round Trip Tickets Good for Return Any Time

#### AT MANCHESTER, N. H.

Air mail closes at Post-Office, Trip 4, 8.32 A.M., Trip 3, 3.53 P.M.  
 Between Airport & Manchester Sta. or Carpenter Hotel, call Checker Cab, phone Man. 90. Running time 15 minutes. Fare, Fifty Cents

#### AT CONCORD, N. H.

Air mail closes at Post-Office, Trip 4, 9.10 A.M., Trip 1, 4.05 P.M.  
 Between Airport and business center, call Yellow Cab Co.  
 Phone Concord 2200. Running time 20 minutes. Fare, Fifty Cents

#### AT WHITE RIVER JCT., VT.

Air mail closes at Post-Office, Trip 4, 9.40 A.M., Trip 1, 3.45 P.M.  
 Between Airport and Coolidge Hotel. Call Coolidge Garage Taxi Service, phone White River Junction 94. Running time 15 minutes.  
 Between Airport and Hanover Inn. Call Thorburn, phone Hanover 190-W. Running time 25 minutes. Fare, One Dollar  
 Between Airport and Rogers Hotel, Lebanon, N. H. Clark's Taxi Service, phone Lebanon 6. Running time 20 mins. Fare, Fifty Cents

#### AT BARRE-MONTPELIER, AIRPORT

Air mail closes at Post-Office, Trip 4, 9.45 A.M., Trip 1, 3.15 P.M.  
 Between Airport and business center Montpelier. Phone Montpelier 14. Running time 25 minutes. Fare, Fifty Cents  
 Between Airport and business center Barre. Phone Barre 580. Running time 25 minutes. Fare, Fifty Cents

#### AT BURLINGTON, VT.

Air mail closes at Post-Office, 2.51 P.M.  
 Between Airport and C. V.-B. R. T. Terminal opp. City Hall Park. Phone Burlington 3610. Running time 15 minutes. Fare, Fifty Cents