



PACIFIC EXPRESS™

System Timetable

Effective October 1, 1982

**THE AIRLINE THAT
GIVES YOU
MORE TO...**

**BOISE
CHICO
FRESNO
LOS ANGELES
MEDFORD
OAKLAND
PALM SPRINGS
PORTLAND
SACRAMENTO
SAN FRANCISCO
SAN JOSE
SANTA ROSA
STOCKTON**

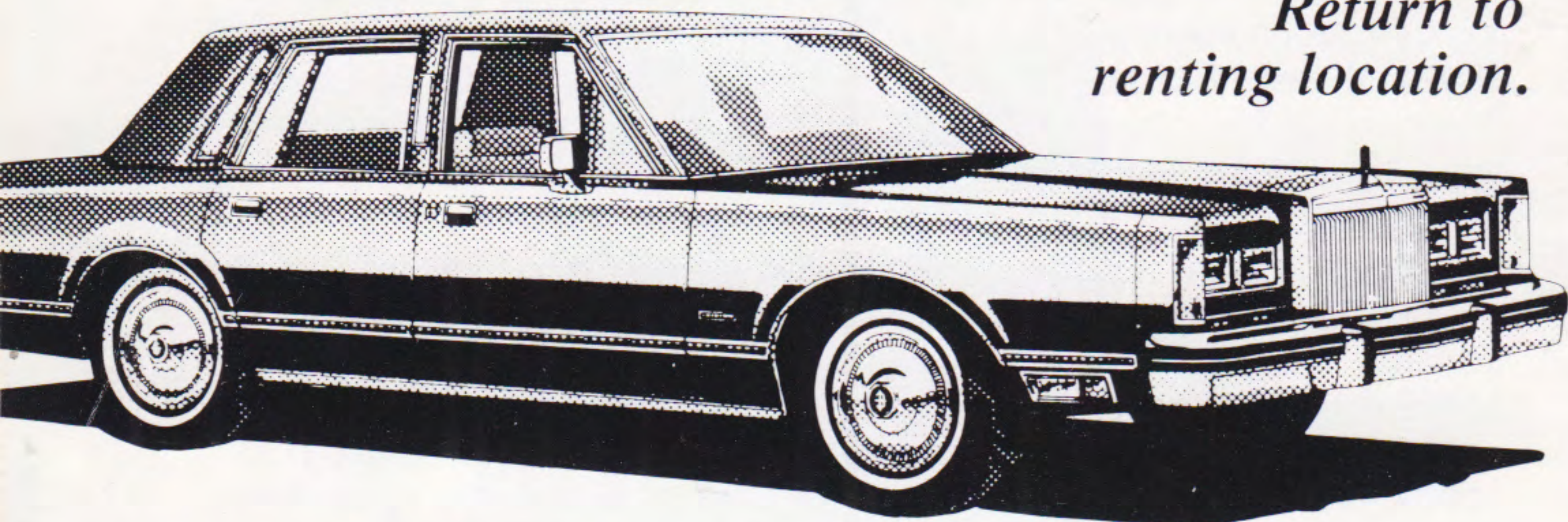


WE GIVE YOU MORE...

A Lincoln for **\$29** *per day!*

\$29 per day weekends, \$39 per day weekdays.

*Return to
renting location.*



To get this super bargain, just fly Pacific Express to any of the six listed destinations, and show a copy of your flight ticket at the Budget airport counter when you rent. SFO (San Francisco), LAX (Los Angeles), PDX (Portland), SJC (San Jose), PSP (Palm Springs), OAK (Oakland). Check with Budget for conditions and rental requirements.

Partners in Travel

You are entitled to two things when you travel—the best service and honest value. We'll give you both, without fail. Budget, the world's largest discount car rental system, is famous for its Great Rates, as is Pacific Express, the new low fare, luxury airline. As for service, there just is none better. Let us prove the point—Pacific Express and Budget will add courtesy and consideration to the bargain.

Budget

rent a car



Partners in Travel



**PACIFIC
EXPRESS™**

System Timetable

Effective October 1, 1982

**THE AIRLINE THAT
GIVES YOU
MORE TO...**

BOISE

CHICO

FRESNO

LOS ANGELES

MEDFORD

OAKLAND

PALM SPRINGS

PORTLAND

SACRAMENTO

SAN FRANCISCO

SAN JOSE

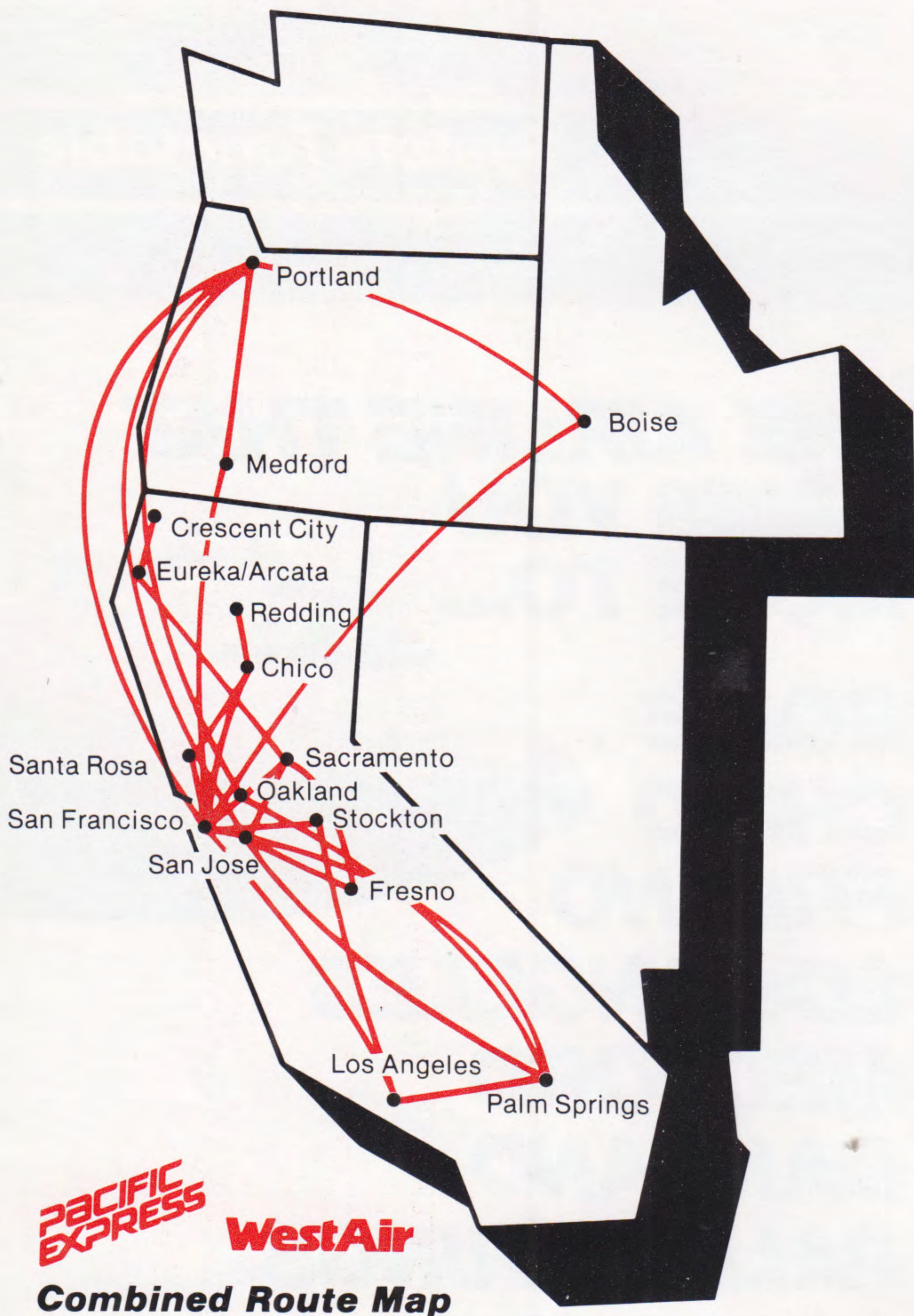
SANTA ROSA

STOCKTON

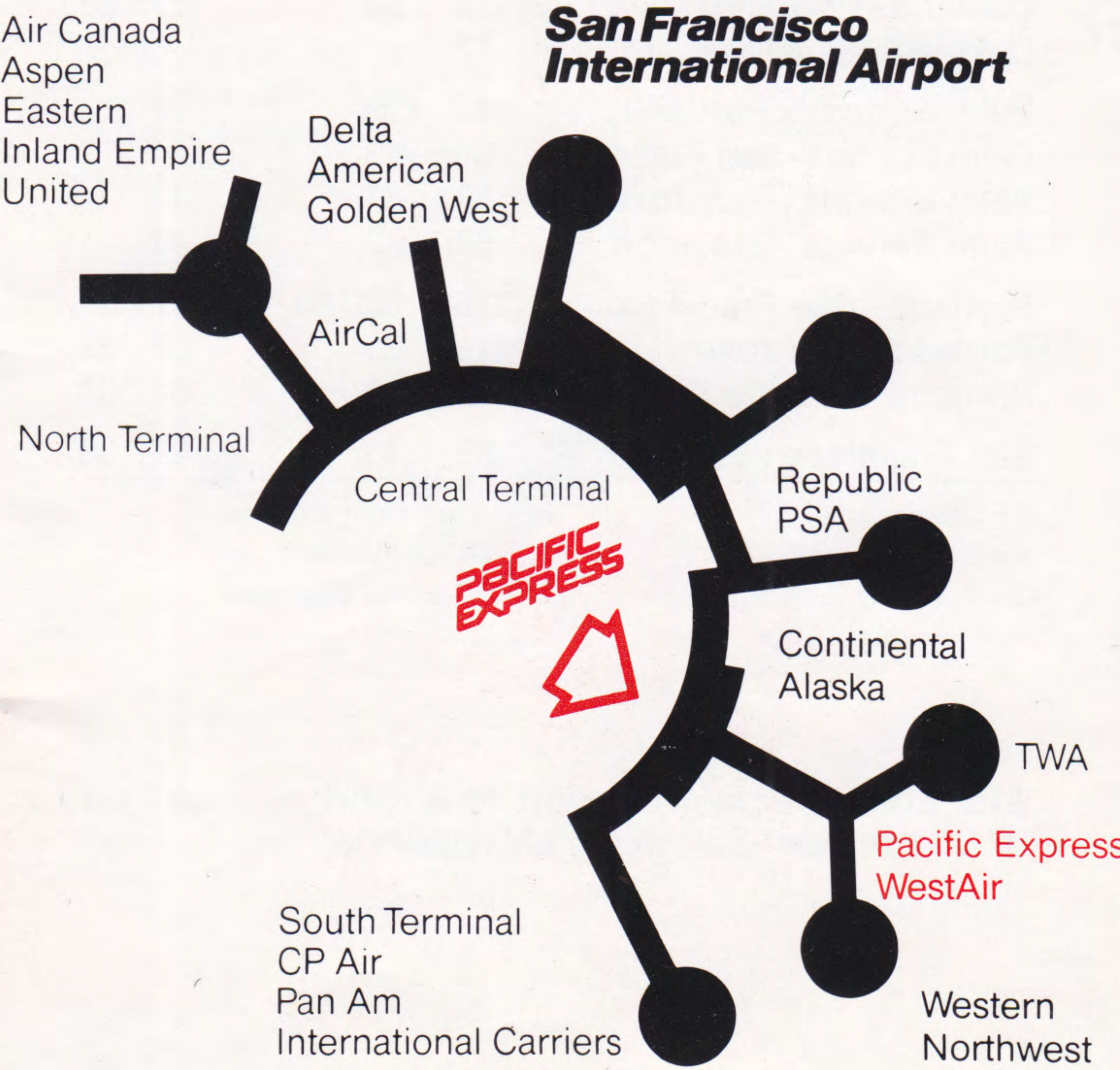


**INTRODUCING THE AIRLINE THAT GIVES YOU MORE...
 MORE LEG ROOM, MORE CARRY ON LUGGAGE SPACE
 AND MORE SERVICE TO THE WEST.**

ALL FLIGHTS PROVIDED WITH ROLLS ROYCE POWERED ONE ELEVEN TWIN JETS.



Los Angeles International Airport



San Francisco International Airport

**ONLY JET SERVICE FROM
 ALL 3 BAY AREA AIRPORTS TO
 PORTLAND, BOISE AND
 PALM SPRINGS.**

EXPRESS FARE SUMMARY

Effective October 1, 1982

All fares are one-way and include 8% Transportation Tax. All fares and schedules are subject to change without notice.

City Pair	Y	K	Q	U	YCH	KSC
Boise - Chico	\$133.	\$103.			\$67.	\$83.
Boise - Los Angeles	133.	113.	\$93.	\$93.	67.	93.
Boise - Medford	113.	83.			57.	63.
Boise - Oakland	113.	83.			57.	63.
Boise - Palm Springs	133.	113.			67.	
Boise - Portland	103.	83.	63.	63.	52.	63.
Boise - San Francisco	103.	83.	63.	63.	57.	63.
Boise - San Jose	113.	83.			57.	63.
Boise - Stockton	133.	103.			67.	83.
Chico - Los Angeles	103.	83.			57.	63.
Chico - Medford	123.	103.			62.	83.
Chico - Palm Springs	113.	93.			57.	
Chico - Portland	133.	113.			67.	93.
Chico - San Francisco	59.	43.			30.	33.
Los Angeles - Medford	133.	113.	93.		67.	93.
Los Angeles - Palm Springs	53.	43.			27.	
Los Angeles - Portland	133.	113.	93.	93.	67.	93.
Los Angeles - San Francisco	71.	46.	39.	30.	36.	39.
Los Angeles - Stockton	71.	51.	46.		36.	40.
Medford - Palm Springs	143.	123.			72.	
Medford - Portland	73.	53.			37.	43.
Medford - San Francisco	73.	53.			37.	43.
Oakland - Palm Springs	83.	63.			42.	
Oakland - Portland	113.	83.			57.	63.
Oakland - San Jose	12.					
Palm Springs - Portland	143.	123.			72.	
Palm Springs - San Francisco	83.	63.			41.	
Palm Springs - San Jose	83.	63.			41.	
Palm Springs - Stockton	83.	63.			41.	
Portland - San Francisco	113.	83.	63.	63.	57.	63.
Portland - San Jose	113.	83.			57.	63.
Portland - Stockton	123.	103.			62.	83.
San Francisco - Stockton	53.	43.			27.	33.

Y = Coach

K = Economy

Q = Economy (Limited)

U = Midnight Express

YCH = Children

KSC = Seat Clearance

PACIFIC EXPRESS PAC

\$15. Small package airport to airport service. (up to 25 pounds) \$30. (26 to 50 pounds)

RESERVATIONS AND INFORMATION

Please call your Travel Agent or Pacific Express.

Anaheim	714-761-9110
Boise	208-342-3542
Chico	916-893-4929
Compton	213-630-6885
Culver City	213-202-8089
Eureka	800-822-8129
Fremont	415-794-8441
Fresno	800-822-8181
Glendale	213-507-7665
Hayward	415-881-4700
Inglewood	213-671-4038
Los Angeles	213-485-0294
Medford	503-773-1475
Oakland	415-836-6176
Pasadena	213-796-4994
Palm Springs	714-320-7921
Portland	503-226-0194
Redding	916-221-1890
Riverside	714-359-5115
Sacramento	916-442-0353
San Francisco	415-362-0676
San Jose	408-293-2199
San Rafael	415-499-0562
Santa Rosa	707-585-3771
Sunnyvale	408-749-8800
Stockton	209-474-0256
Van Nuys	213-994-6501
Ventura	805-653-6155
Northern California	800-822-8129
Southern California	800-822-8181
Outside California	800-824-9129



"Fly the Pacific Express Way"

JET SEAT CLEARANCE SALE



While other airlines are busy matching fares we're busy cutting ours. Our Seat Clearance fares apply to most of our destinations. First come, first served. Just buy your ticket at the Pacific Express counter in the airport the night before your flight, from 7 P.M. to 10 P.M. Then relax. There's no standing by on day of departure; your ticket automatically reserves your seat. More low fares to more places. That's the Pacific Express way. For details, call Pacific Express.



"Fly the Pacific Express Way"

GENERAL INFORMATION

CREDIT CARDS — Pacific Express will accept American Express, Master Charge, BankAmericard/VISA, and Air Travel Cards.

AIRCRAFT

Pacific Express utilizes BAC 1-11 jet aircraft on flights #100-199. WestAir Commuter utilizes Cessna 402 (prop) and De Havilland Dash-6 jet props on flights #200-999.

SECURITY

For your security all passengers and their handcarried items must be inspected in accordance with the government-sponsored security program. Passengers should proceed through security inspection at least 30 minutes prior to departure time.

CHECK-IN

Pacific Express requests that passengers be at the Pacific Express boarding gate for check-in at least 20 minutes before scheduled departure time. Reservations of passengers presenting themselves at the Pacific Express boarding gate less than 10 MINUTES before the scheduled departure of a flight will be subject to cancellation.

BAGGAGE

BAGGAGE LIABILITY — Passenger name identification must be placed on the outside of all checked baggage. Baggage identification labels are available from Pacific Express at no cost. Liability for baggage between points in the U.S. will not exceed \$750.00 unless you declare a higher valuation and pay an extra charge. Excess valuation cannot be declared for certain checked valuable items such as jewelry, negotiable instruments, currency and antiques.

FREE BAGGAGE ALLOWANCE — (Per Passenger) 1 piece of baggage with linear dimensions (length + height + width) not exceeding 62 inches, plus 1 piece of baggage with linear dimensions not exceeding 55 inches. One or more additional pieces, totaling not more than 45 inches may be carried on board provided it fits beneath the seat; approximate dimensions not to exceed 10" x 16" x 19". In addition to size, no single piece can weigh more than 70 pounds.

EXCESS BAGGAGE — A standard fee of \$7.00 will be charged for each of the first four pieces, and \$28.00 for each additional piece. The items listed below are subject to the special charges regardless of the total baggage carried.

Bicycles—\$14.00 Scuba Gear — \$7.00
Surfboards — \$14.00 Household Pets — \$21.00

ARTICLES THAT ARE RESTRICTED IN PASSENGER BAGGAGE

Medicinal and toilet articles necessary for the passenger during the journey in quantities that do not exceed 75 ounces (net weight ounces and fluid ounces), and the capacity of each container other than an aerosol container, does not exceed 16 fluid ounces or 1 pound of material may be carried without prior approval but for safety reasons, restricted articles, such as those listed below shall not be carried in the passenger's baggage without consent of and prior arrangement with the carrier:

- Compressed gases (flammable, non-flammable and poisonous)
- Corrosives (such as acids, alkalis and wet cell batteries)
- Explosives, munitions, fireworks and flares
- Flammable liquids and solids (such as lighter or heating fuels, matches and articles which are easily ignited)
- Oxidizing materials (such as bleaching powder and peroxides)
- Poisons and tear gases
- Radioactive materials
- Other restricted articles (such as mercury, magnetized materials, offensive or irritating materials).

NO SMOKING

Sections are provided on all Pacific Express aircraft for non-smokers. Generally, the forward portion of the aircraft is reserved for non-smokers. Signs are posted in the cabin designating the no smoking sections.

DENIED BOARDING COMPENSATION

Compensation will be paid if the flight for which you have a confirmed reservation is unable to accommodate you and departs without you. Subject to the exceptions prescribed in the tariff on file, compensation will be in amounts from \$37.50 to \$200.00 depending upon the ticket value.

**PACIFIC
EXPRESS**

Pacific Express and WestAir
General Offices
1103 Fortress
Chico, CA 95926 (916) 893-6500