

# PACIFIC EXPRESS™

*System Timetable*

Effective January 3, 1983



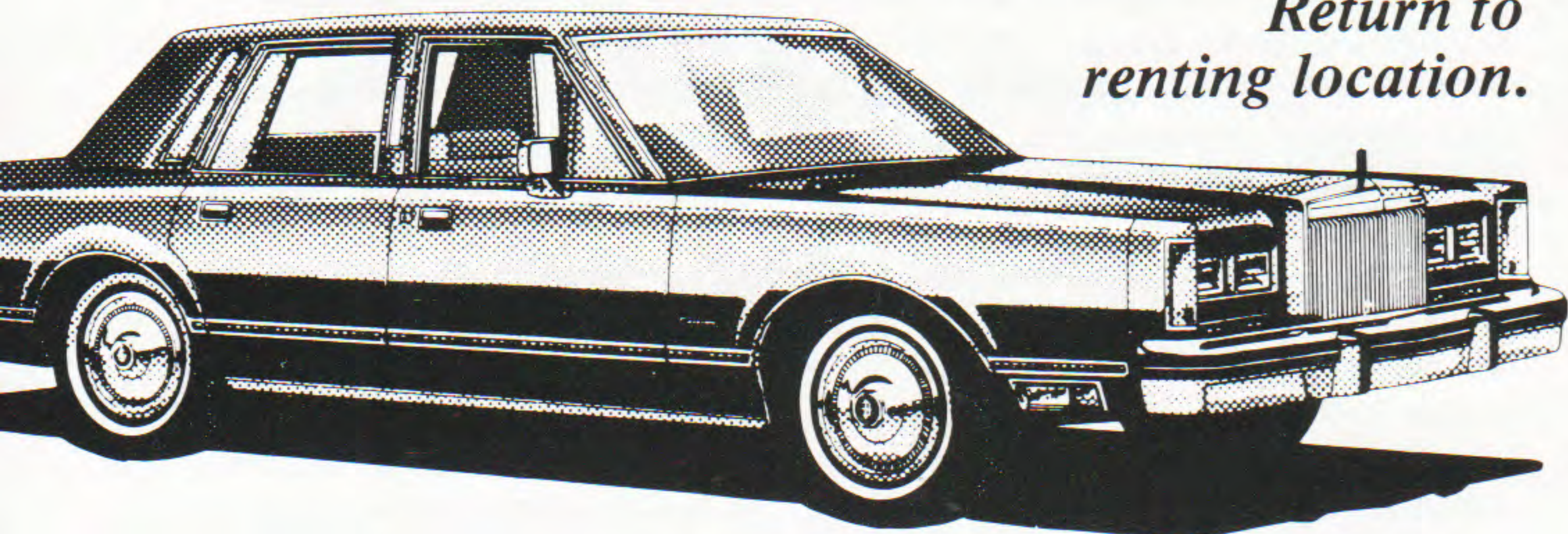
**MORE SERVICE TO  
PALM SPRINGS...  
...FROM  
SAN FRANCISCO,  
SAN JOSE, OAKLAND,  
PORTLAND, BOISE,  
MEDFORD, CHICO, AND  
LOS ANGELES.**

**WE GIVE YOU MORE...**

*A Lincoln for* **\$29** *per day!*

*\$29 per day weekends, \$39 per day weekdays.*

*Return to  
renting location.*



*To get this super bargain, just fly Pacific Express to any of the six listed destinations, and show a copy of your flight ticket at the Budget airport counter when you rent. SFO (San Francisco), LAX (Los Angeles), PDX (Portland), SJC (San Jose), PSP (Palm Springs), OAK (Oakland). Check with Budget for conditions and rental requirements.*

### **Partners in Travel**

*You are entitled to two things when you travel—the best service and honest value. We'll give you both, without fail. Budget, the world's largest discount car rental system, is famous for its Great Rates, as is Pacific Express, the new low fare, luxury airline. As for service, there just is none better. Let us prove the point—Pacific Express and Budget will add courtesy and consideration to the bargain.*

**Budget**

rent a car



*Partners in Travel*

**PACIFIC  
EXPRESS™**

**System Timetable**

Effective January 3, 1983



**MORE SERVICE TO  
PALM SPRINGS...**

**...FROM**

**SAN FRANCISCO,  
SAN JOSE, OAKLAND,  
PORTLAND, BOISE,  
MEDFORD, CHICO, AND  
LOS ANGELES.**

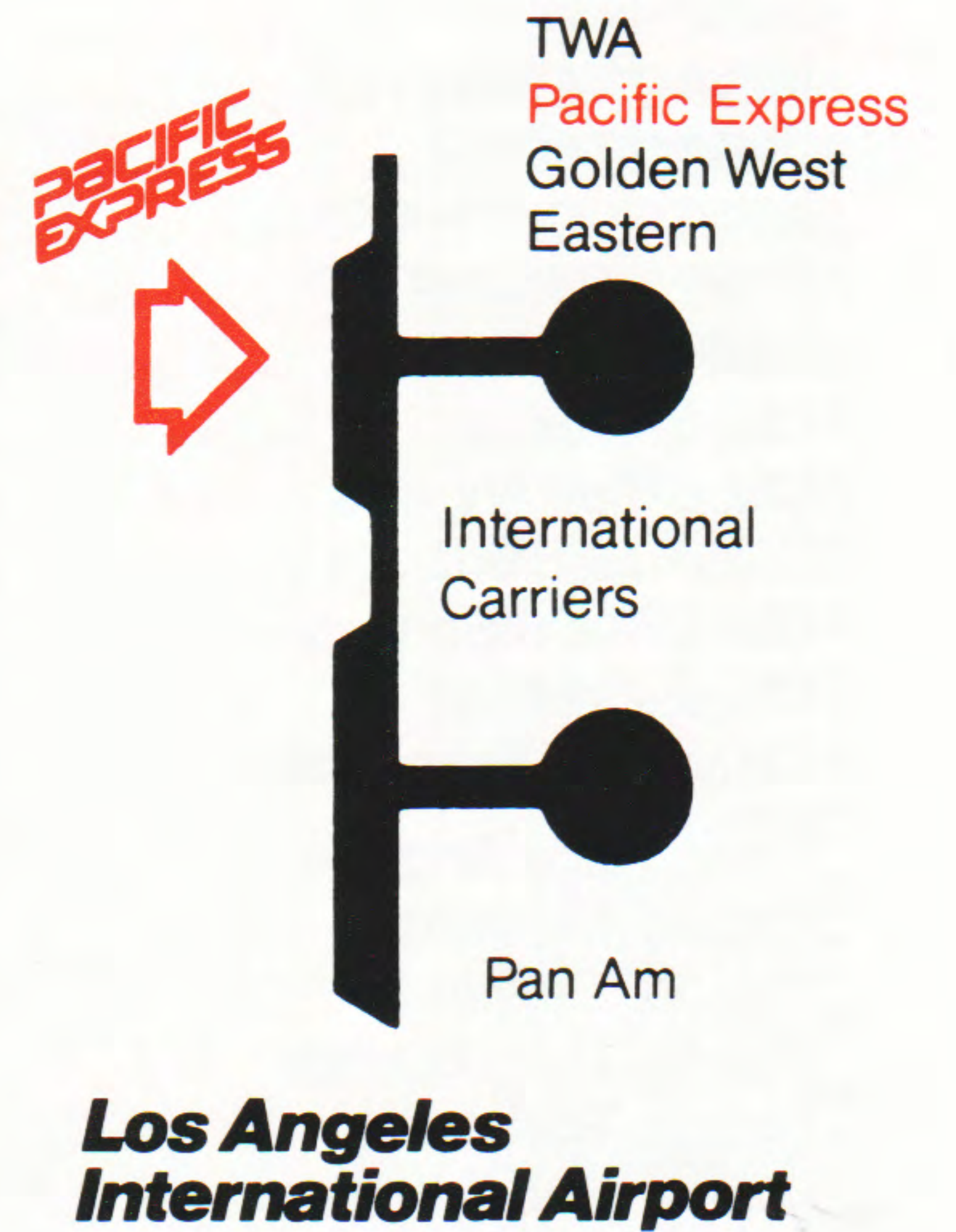
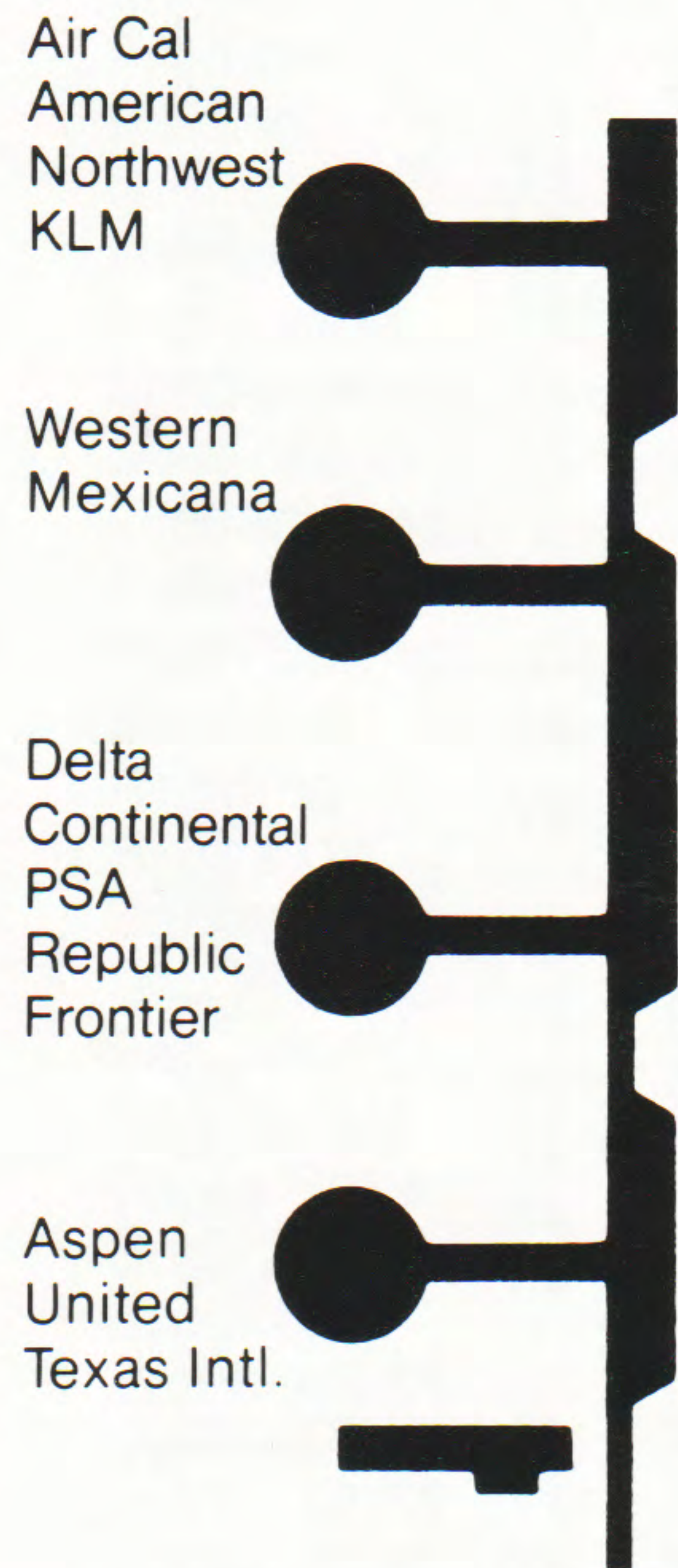
**INTRODUCING THE AIRLINE THAT GIVES YOU MORE...  
 MORE LEG ROOM, MORE CARRY-ON LUGGAGE SPACE,  
 WITH COMPLIMENTARY BEVERAGES, WINE, BEER, AND  
 COCKTAILS\*. CONTINENTAL BREAKFAST ON ALL  
 FLIGHTS BEFORE 9 AM.**

**ALL FLIGHTS PROVIDED WITH ROLLS ROYCE POWERED ONE ELEVEN TWIN JETS.**



**NEW JET SERVICE BETWEEN  
 FRESNO AND SAN JOSE,  
 OAKLAND, PORTLAND, BOISE,  
 LOS ANGELES AND STOCKTON.**

\*Beverages, Cocktails and Continental Breakfast are included in the price of the ticket.



## EXPRESS FARE SUMMARY

Effective January, 3, 1983

All fares are one-way and include 8% Transportation Tax. All fares and schedules are subject to change without notice.

City Pair	Y	K	Q	U	YCH
Boise - Chico	\$137.	\$107.			\$70.
Boise - Fresno	149.	125.			75.
Boise - Los Angeles	151.	117.	97.		77.
Boise - Medford		87.			62.
Boise - Oakland	121.	87.			62.
Boise - Palm Springs	151.	127.			77.
Boise - Portland	107.	87.	67.		55.
Boise - San Francisco	121.	87.	71.		62.
Boise - San Jose	121.	87.			62.
Boise - Stockton	137.	107.			70.
Chico - Fresno	105.	85.			53.
Chico - Los Angeles	107.	85.			55.
Chico - Medford			86.		65.
Chico - Palm Springs	117.	97.			60.
Chico - Portland	137.	100.			70.
Chico - San Francisco	61.	41.			32.
Fresno - Los Angeles	67.	47.			34.
Fresno - Medford			92.		65.
Fresno - Oakland	67.	47.			34.
Fresno - Palm Springs	89.	65.			45.
Fresno - Portland	135.	125.			68.
Fresno - San Francisco	67.	47.			34.
Fresno - San Jose	67.	47.			34.
Fresno - Stockton	55.	45.			26.
Los Angeles - Medford			84.		70.
Los Angeles - Palm Springs	57.	47.		37.	30.
Los Angeles - Portland	137.	117.	97.	97.	70.
Los Angeles - San Francisco	77.	47.	39.	30.	40.
Los Angeles - San Jose	77.	49.			40.
Los Angeles - Stockton	77.	57.			40.
Medford - Palm Springs			112.		70.
Medford - Portland	69.	59.	45.		40.
Medford - San Francisco	69.	59.	45.		40.
Oakland - Palm Springs	87.	67.			47.
Oakland - Portland	117.	85.	75.	71.	60.
Oakland - San Jose	17.				
Palm Springs - Portland	147.	127.			77.
Palm Springs - San Francisco	87.	67.		57.	47.
Palm Springs - San Jose	87.	67.			47.
Palm Springs - Stockton	87.	67.			47.
Portland - San Francisco	117.	85.	75.	71.	62.
Portland - San Jose	117.	85.	75.	71.	62.
Portland - Stockton	127.	117.			65.
San Francisco - Stockton	57.	47.			30.

Y = Coach      U = Midnight Express      Q = Economy (Limited)  
K = Economy      YCH = Children

## PACIFIC EXPRESS PAC

\$15. Small package airport to airport service. (up to 25 pounds) \$30. (26 to 50 pounds)

## RESERVATIONS AND INFORMATION

Please call your Travel Agent or Pacific Express.

Anaheim	714-761-9110
Boise	208-342-3542
Chico	916-893-4929
Compton	213-630-6885
Culver City	213-202-8089
Eureka	707-445-8456
Fremont	415-794-8441
Fresno	800-822-8129
Glendale	213-507-7665
Hayward	415-881-4700
Inglewood	213-671-4038
Los Angeles	213-485-0294
Medford	503-773-1475
Oakland	415-836-6176
Pasadena	213-796-4994
Palm Springs	714-320-7921
Portland	503-226-0194
Redding	916-221-1890
Riverside	714-359-5115
Sacramento	916-442-0353
San Francisco	415-362-0676
San Jose	408-293-2199
San Rafael	415-499-0562
Santa Rosa	707-585-3771
Sunnyvale	408-749-8800
Stockton	209-474-0256
Van Nuys	213-994-6501
Ventura	805-653-6155
Northern California	800-822-8129
Southern California	800-822-8181
Outside California	800-824-9129



"Fly the Pacific Express Way"

**BOISE (BOI) Res. 208-342-3542**

Flight #	Leave	Arrive	Stops/ Via	Freq.	Flight #	Leave	Arrive	Stops/ Via	Freq.
<b>To Chico</b>					<b>From Chico</b>				
115/602	9:25A	1:00P	SFO	D	707/118	10:00A	4:05P	SFO	x 6
<b>To Fresno</b>					<b>From Fresno</b>				
151/963	7:45A	1:45P	SJC	x 6, 7	150	6:55A	12:40P	3	x 6, 7
115/142	9:25A	1:15P	LAX	D	964/152	10:40A	6:05P	SJC	x 5, 6, 7
153/155	2:00P	8:20P	SJC	x 6					
155	4:30P	8:20P	3	x 6					
<b>To Los Angeles</b>					<b>From Los Angeles</b>				
115	9:25A	11:30A	1	D	110/150	6:45A	12:50P	PDX	x 6, 7
153/121	2:00P	9:15P	PDX	x 6	118	11:55A	4:05P	1	D
118/121	4:30P	9:15P	PDX	D					
<b>To Medford</b>					<b>From Medford</b>				
153/121	2:00P	6:20P	PDX	x 6	110/150	9:30A	12:40P	PDX	x 6, 7
155/121	4:30P	6:20P	PDX	D					
<b>To Oakland</b>					<b>From Oakland</b>				
151	7:45A	10:35A	2	x 7	150	8:35A	12:40P	1	x 6, 7
153	2:00P	4:10P	1	x 6	152	2:00P	6:05P	1	x 5, 7
155	4:30P	6:35P	1	x 6					
<b>To Palm Springs</b>					<b>From Palm Springs</b>				
151	7:45A	12:25P	3	x 7	152	11:30A	6:05P	3	x 5, 7
<b>To Portland</b>					<b>From Portland</b>				
151	7:45A	7:50A	0	x 7	115	7:00A	9:00A	0	D
153	2:00P	2:05P	0	x 6	150	10:40A	12:40P	0	x 6, 7
155	4:30P	4:35P	0	x 6	152	4:00P	6:05P	0	x 5, 7
<b>To Sacramento</b>					<b>From Sacramento</b>				
115/964	7:45A	12:25P	SJC	x 6, 7	707/118	10:45A	4:05P	SFO	x 6
115/804	9:25A	11:55A	SFO	x 6	963/152	12:00N	6:05P	SJC	x 5, 7
					509/118	12:05P	4:05P	SFO	x 6, 7
<b>To San Francisco</b>					<b>From San Francisco</b>				
115	9:25A	9:55A	0	D	110/150	8:15A	12:40P	PDX	x 6, 7
155/121	4:30P	7:40P	PDX	x 6	118	1:30P	4:05P	0	D
<b>To San Jose</b>					<b>From San Jose</b>				
151	7:45A	9:55A	1	x 7	150	7:55A	12:40P	2	x 6, 7
153	2:00P	5:00P	2	x 6	152	1:15P	6:05P	2	x 5, 7
155	4:30P	7:25P	2	x 6	155	4:30P	7:25P	2	x 6
					156	5:20P	9:30P	1	5, 7

**CHICO (CIC) Res. 916-893-4929**

Flight #	Leave	Arrive	Stops/ Via	Freq.	Flight #	Leave	Arrive	Stops/ Via	Freq.
<b>To Boise</b>					<b>From Boise</b>				
707/118	10:00A	4:05P	SFO	x 6	115/602	9:25A	1:00P	SFO	D
<b>To Los Angeles</b>					<b>From Los Angeles</b>				
111	7:15A	9:35A	1	D	110/602	6:45A	1:00P	SFO	D
315/121	6:00P	9:15P	SFO	x 6	118/306	11:55A	4:55P	SFO	x 6, 7
					120/126	3:50P	9:45P	SFO	D

**CHICO (CIC) Res. 916-893-4929**

Flight #	Leave	Arrive	Stops/ Via	Freq.	Flight #	Leave	Arrive	Stops/ Via	Freq.
<b>To Medford</b>					<b>From Medford</b>				
499/110	5:30A	9:15A	SFO	x 6, 7	121/126	6:35P	9:45P	SFO	D
<b>To Palm Springs</b>					<b>From Palm Springs</b>				
111	7:15A	10:40P	2	D	162/306	1:20P	4:55P	SFO	x 6, 7
707/161	10:00A	2:10P	SFO	x 6	126	7:20P	9:45P	1	D
603/125	2:40P	6:55P	SFO	x 6					
<b>To Portland</b>					<b>From Portland</b>				
707/118	10:00A	4:35P	SFO	x 6	115/602	7:00A	1:00P	SFO	D
					161/604	10:45A	2:50P	SFO	x 6, 7
					121/126	5:30P	9:45P	SFO	D
<b>To San Francisco</b>					<b>From San Francisco</b>				
111	7:15A	7:59A	0	D	602	11:50A	1:00P	0	D
603	2:40P	3:50P	0	x 6	318	4:30P	5:30P	0	x 6, 7
315	6:00P	7:00P	0	x 6	126	9:00P	9:45P	0	D

**FRESNO (FAT) Res. 800-822-8129**

Flight #	Leave	Arrive	Stops/ Via	Freq.	Flight #	Leave	Arrive	Stops/ Via	Freq.
<b>To Boise</b>					<b>From Boise</b>				
150	6:55A	12:40P	3	x 6, 7	151/963	7:45A	1:45P	SJC	x 6, 7
964/152	10:40A	6:05P	SJC	x 5, 6, 7	115/142	9:25P	1:15P	LAX	D
					153/155	2:00P	8:20P	SJC	x 6
					155	4:30P	8:20P	3	x 6
<b>To Los Angeles</b>					<b>From Los Angeles</b>				
141	9:15A	10:00A	0	x 7	140	6:30A	7:20A	0	x 7
143	3:15P	4:05P	0	D	142	12:25P	1:15P	0	D
145	7:35P	8:25P	0	x 6	144	4:45P	5:35P	0	x 6
<b>To Oakland</b>					<b>From Oakland</b>				
150	6:55A	8:15A	1	x 7	155	6:55P	8:20P	1	x 6
<b>To Palm Springs</b>					<b>From Palm Springs</b>				
150/151	6:55A	12:25P	SJC	x 7	152/155	11:30A	8:20P	OAK	x 5, 6,
<b>To Portland</b>					<b>From Portland</b>				
150	6:55A	10:15A	2	x 7	151/963	8:20A	1:45P	SJC	x 6, 7
964/152	10:40A	3:35P	SJC	x 5, 6, 7	155	5:00P	8:20P	2	x 6
968/153	3:50P	7:00P	SJC	x 5, 6, 7					
<b>To San Jose</b>					<b>From San Jose</b>				
150	6:55A	7:35A	0	x 7	971	7:45A	8:40A	0	x 6, 7
964	10:40A	11:35A	0	x 6, 7	963	12:50P	1:45P	0	x 6, 7
968	3:50P	4:45P	0	x 6, 7	967	5:15P	6:10P	0	x 6
972	6:30P	7:25P	0	x 6	155	7:45P	8:20P	0	x 6
<b>To Stockton</b>					<b>From Stockton</b>				
140	7:35A	8:10A	0	x 7	141	8:30A	9:00A	0	x 7
142	1:30P	2:05P	0	D	143	2:25P	3:00P	0	D
144	5:50P	6:25P	0	x 6	145	6:45P	7:20P	0	x 6

Frequency code: x - Except, 1 - Monday, 2 - Tuesday, 3 - Wednesday, 4 - Thursday, 5 - Friday, 6 - Saturday, 7 - Sunday, D - Daily \* Indicates Midnight Express

**LOS ANGELES (LAX) Res. 213-485-0294**

Flight #	Leave	Arrive	Stops/ Via	Freq.	Flight #	Leave	Arrive	Stops/ Via	Freq.
<b>To Boise</b>					<b>From Boise</b>				
110/150	6:45A	12:40P	PDX	x 6, 7	115	9:25A	11:30A	1	D
118	11:55A	4:05P	1	D	153/121	2:00P	9:15P	PDX	x 6
					118/121	4:30P	9:15P	PDX	D
<b>To Chico</b>					<b>From Chico</b>				
110/602	6:45A	1:00P	SFO	D	111	7:15A	9:35A	1	D
118/306	11:55A	4:55P	SFO	x 6, 7	315/121	6:00P	9:15P	SFO	x 6
120/126	3:50P	9:45P	SFO	D					
<b>To Fresno</b>					<b>From Fresno</b>				
140	6:30A	7:20A	0	x 7	141	9:15A	10:00A	0	x 7
142	12:25P	1:15P	0	D	143	3:15P	4:05P	0	D
144	4:45P	5:35P	0	x 6	145	7:35P	8:25P	0	x 6
<b>To Medford</b>					<b>From Medford</b>				
110	6:45A	9:15A	1	D	121	6:35P	9:15P	1	D
<b>To Palm Springs</b>					<b>From Palm Springs</b>				
111	10:00A	10:40A	0	D	120	2:45P	3:25P	0	D
<b>To Portland</b>					<b>From Portland</b>				
110	6:45A	10:20A	2	x 7	115	7:00A	11:30A	2	D
118	11:55A	4:35P	2	D	121	5:30P	9:15P	2	D
*124	8:55P	11:59P	1	x 2, 3, 6	*131	8:50P	11:59P	1	x 2, 3, 6
<b>To Sacramento</b>					<b>From Sacramento</b>				
110/804	6:45A	11:55A	SFO	x 6	499/111	6:15A	9:35A	SFO	x 6, 7
118/316	11:55A	2:50P	SFO	x 6, 7	801/115	8:15A	11:30A	SFO	x 7
120/566	3:50P	9:45P	SFO	x 6	605/121	5:15P	9:15P	SFO	x 6
<b>To San Francisco</b>					<b>From San Francisco</b>				
110	6:45A	7:45A	0	D	111	8:20A	9:35A	0	D
118	11:55A	1:05P	0	D	115	10:15A	11:30A	0	D
120	3:50P	5:05P	0	D	121	8:00P	9:15P	0	D
*124	8:55P	10:05P	0	x 6	*131	10:50P	11:59P	0	x 5, 6, 7
<b>To Santa Rosa</b>					<b>From Santa Rosa</b>				
120/412	3:50P	7:00P	SFO	x 6	211/115	8:30A	11:30A	SFO	x 6,
<b>To Stockton</b>					<b>From Stockton</b>				
140	6:30A	8:10A	1	x 7	141	8:30A	10:00A	1	x 7
142	12:25P	2:05P	1	D	143	2:25P	4:05P	1	D
144	4:45P	6:25P	1	x 6	145	6:45P	8:25P	1	x 6

**MEDFORD (MFR) Res. 503-773-1475**

Flight #	Leave	Arrive	Stops/ Via	Freq.	Flight #	Leave	Arrive	Stops/ Via	Freq.
<b>To Boise</b>					<b>From Boise</b>				
110/150	9:30A	12:40P	PDX	x 6, 7	153/121	2:00P	6:20P	PDX	x 6
					155/121	4:30P	6:20P	PDX	D
<b>To Chico</b>					<b>From Chico</b>				
121/126	6:35P	9:45P	SFO	D	499/110	5:30A	9:15A	SFO	x 6, 7

Pacific Express utilizes BAC 1-11 jet aircraft on flights #100-199. WestAir Commuter utilizes Cessna 402 (prop) and De Havilland Dash-6 jet props on flights #200-999.

**MEDFORD (MFR) Res. 503-773-1475**

Flight #	Leave	Arrive	Stops/ Via	Freq.	Flight #	Leave	Arrive	Stops/ Via	Freq.
<b>To Los Angeles</b>					<b>From Los Angeles</b>				
121	6:35P	9:15P	1	D	110	6:45A	9:15A	1	D
<b>To Portland</b>					<b>From Portland</b>				
110	9:30A	10:20A	0	D	121	5:30P	6:20P	0	D
<b>To Sacramento</b>					<b>From Sacramento</b>				
121/566	6:35P	9:45P	SFO	x 6	499/110	6:15A	9:15A	SFO	x 6, 7
<b>To San Francisco</b>					<b>From San Francisco</b>				
121	6:35P	7:40P	0	D	110	8:15A	9:15A	0	D

**OAKLAND (OAK) Res. 415-836-6176**

Flight #	Leave	Arrive	Stops/ Via	Freq.	Flight #	Leave	Arrive	Stops/ Via	Freq.
<b>To Boise</b>					<b>From Boise</b>				
150	8:35A	12:40P	1	x 6, 7	151	7:45A	10:35A	2	x 7
152	2:00P	6:05P	1	x 5, 6	153	2:00P	4:10P	1	x 6
					155	4:30P	6:35P	1	x 6
<b>To Fresno</b>					<b>From Fresno</b>				
155	6:55P	8:20P	1	x 6	150	6:55A	8:15A	1	x 7
<b>To Palm Springs</b>					<b>From Palm Springs</b>				
151	11:00A	12:25P	0	D	152	11:30A	1:35P	1	x 5, 7
154	2:00P	3:25P	0	5, 7	154	11:30A	1:35P	1	5, 7
					158	4:10P	6:10P	1	5, 7
<b>To Portland</b>					<b>From Portland</b>				
150	8:35A	10:15A	0	x 7	151	8:20A	10:35A	1	D
152	2:00P	3:35P	0	x 5, 7	153	2:30P	4:10P	0	D
153	4:30P	7:00P	1	x 5, 7	155	5:00P	6:35P	0	x 6
156	4:30P	7:00P	1	5, 7					
158	6:30P	8:05P	0	5, 7					
<b>To San Jose</b>					<b>From San Jose</b>				
153	4:30P	5:00P	0	D	150	7:55A	8:15A	0	x 7
156	4:30P	5:00P	0	5, 7	151	10:15A	10:35A	0	D
155	6:55P	7:25P	0	x 6	152	1:15P	1:35P	0	x 5, 7
					154	1:15P	1:35P	0	5, 7
					158	5:50P	6:10P	0	5, 7

**PALM SPRINGS (PSP) Res. 714-320-7921**

Flight #	Leave	Arrive	Stops/ Via	Freq.	Flight #	Leave	Arrive	Stops/ Via	Freq.
<b>To Boise</b>					<b>From Boise</b>				
152	11:30A	6:05P	3	x 5, 7	151	7:45A	12:25P	3	x 7
<b>To Chico</b>					<b>From Chico</b>				
162/306	1:20P	4:55P	SFO	x 6, 7	111	7:15A	10:40A	2	D
126	7:20P	9:45P	1	D	707/161	10:00A	2:10P	SFO	x 6
					603/125	2:40P	6:55P	SFO	x 6

Frequency code: x - Except, 1 - Monday, 2 - Tuesday, 3 - Wednesday, 4 - Thursday, 5 - Friday, 6 - Saturday, 7 - Sunday, D - Daily \* Indicates Midnight Express

**PALM SPRINGS (PSP) Res. 714-320-7921**

Flight #	Leave	Arrive	Stops/ Via	Freq.	Flight #	Leave	Arrive	Stops/ Via	Freq.
<b>To Fresno</b>					<b>From Fresno</b>				
152/155	11:30A	8:20P	OAK	x 5, 6, 7	150/151	6:55P	12:25P	SJC	x 7
<b>To Los Angeles</b>					<b>From Los Angeles</b>				
120	2:45P	3:25P	0	D	111	10:00A	10:40A	0	D
<b>To Oakland</b>					<b>From Oakland</b>				
152	11:30A	1:35P	1	x 5, 7	151	11:00A	12:25P	0	D
154	11:30A	1:35P	1	5, 7	154	2:00P	3:25P	0	5, 7
158	4:10P	6:10P	1	5, 7					
<b>To Portland</b>					<b>From Portland</b>				
152	11:30A	3:35P	2	x 5, 7	151	8:20A	12:25P	2	D
162	1:20P	4:50P	1	D	161	10:45A	2:10P	1	D
158	4:10P	8:05P	2	5, 7					
<b>To Sacramento</b>					<b>From Sacramento</b>				
152/966	11:30A	4:10P	SJC	x 5, 6, 7	499/111	6:15A	10:40A	SFO	x 6, 7
162/306	1:20P	4:10P	SFO	x 6, 7	707/161	10:45A	2:10P	SFO	x 6, 7
126/566	7:20P	9:45P	SFO	x 6	317/125	3:20P	6:55P	SFO	x 6, 7
<b>To San Francisco</b>					<b>From San Francisco</b>				
162	1:20P	2:45P	0	D	111	8:20A	10:40A	1	D
120	2:45P	5:05P	1	D	161	12:45P	2:10P	0	D
126	7:20P	8:40P	0	D	125	5:35P	6:55P	0	D
<b>To San Jose</b>					<b>From San Jose</b>				
152	11:30A	12:55P	0	x 5, 7	151	10:15A	12:25P	1	D
154	11:30A	12:55P	0	5, 7	154	1:15P	3:25P	1	5, 7
158	4:10P	5:30P	0	5, 7					
<b>To Santa Rosa</b>					<b>From Santa Rosa</b>				
162/412	1:20P	2:45P	SFO	x 6	211/161	8:30A	2:10P	SFO	x 6, 7
120/412	2:45P	7:00P	SFO	x 6	311/125	1:00P	6:55P	SFO	x 6, 7
<b>To Stockton</b>					<b>From Stockton</b>				
120/144	2:45P	6:25P	LAX	x 6	931/111	6:30A	10:40A	SFO	x 7
					933/161	10:20A	2:10P	SFO	x 6, 7
<b>To Vancouver (YVR)</b>					<b>From Vancouver (YVR)</b>				
162/CP131	1:20P	7:35P	SFO	D	CP130/161	8:30A	2:10P	SFO	D
120/CP103	2:45P	9:30P	LAX	D	CP132/125	2:30P	6:55P	SFO	D

\*Flights to and from Vancouver for Palm Springs are connecting services on C.P. Air.

**PORTLAND (PDX) Res. 503-226-0194**

Flight #	Leave	Arrive	Stops/ Via	Freq.	Flight #	Leave	Arrive	Stops/ Via	Freq.
<b>To Boise</b>					<b>From Boise</b>				
115	7:00A	9:00A	0	D	151	7:45A	7:50A	0	x 7
150	10:40A	12:40P	0	x 6, 7	153	2:00P	2:05P	0	x 6
152	4:00P	6:05P	0	x 5, 7	155	4:30P	4:35P	0	x 6
<b>To Chico</b>					<b>From Chico</b>				
115/602	7:00A	1:00P	SFO	D	707/118	10:00A	4:35P	SFO	x 6
161/604	10:45A	2:50P	SFO	x 6, 7					
121/126	5:30P	9:45P	SFO	D					

Pacific Express utilizes BAC 1-11 jet aircraft on flights #100-199. WestAir Commuter utilizes Cessna 402 (prop) and De Havilland Dash-6 jet props on flights #200-999.

**PORTLAND (PDX) Res. 503-226-0194**

Flight #	Leave	Arrive	Stops/ Via	Freq.	Flight #	Leave	Arrive	Stops/ Via	Freq.
<b>To Portland</b>					<b>From Portland</b>				
151/963	8:20A	1:45P	SJC	x 6, 7	150	6:55A	10:15A	2	x 7
155	5:00P	8:20P	2	x 6	964/152	10:40A	3:35P	SJC	x 5, 6, 7
					968/153	3:50P	7:00P	SJC	x 5, 6, 7
<b>To Los Angeles</b>					<b>From Los Angeles</b>				
115	7:00A	11:30A	2	D	110	6:45A	10:20A	2	D
121	5:30P	9:15P	2	D	118	11:55A	4:35P	2	D
*131	8:50P	11:59P	1	x 2, 3, 6	*124	8:55P	11:59P	1	x 2, 3, 6
<b>To Medford</b>					<b>From Medford</b>				
121	5:30P	6:20P	0	D	110	9:30A	10:20	0	D
<b>To Oakland</b>					<b>From Oakland</b>				
151	8:20A	10:35A	1	D	150	8:35A	10:15A	0	x 7
153	2:30P	4:10P	0	D	152	2:00P	3:35P	0	x 5, 7
155	5:00P	6:35P	0	x 6	153	4:30P	7:00P	1	x 5, 7
					156	4:30P	7:00P	1	5, 7
					158	6:30P	8:05P	0	5, 7
<b>To Palm Springs</b>					<b>From Palm Springs</b>				
151	8:20A	12:25P	2	D	152	11:30A	3:35P	2	x 5, 7
161	10:45A	2:10P	1	D	162	1:20P	4:50P	1	D
					158	4:10P	8:05P	2	5, 7
<b>To Sacramento</b>					<b>From Sacramento</b>				
115/804	7:00A	11:55A	SFO	x 6	499/110	6:15A	10:20A	SFO	x 6, 7
161/604	10:45A	2:00P	SFO	x 6, 7	707/118	10:45A	4:35P	SFO	x 6
121/566	5:30P	9:45P	SFO	x 6	963/152	12:00N	3:35P	SJC	x 5, 6, 7
<b>To San Francisco</b>					<b>From San Francisco</b>				
115	7:00A	9:55A	1	D	110	8:15A	10:20A	1	D
161	10:45A	12:20P	0	D	118	1:30P	4:35P	1	D
121	5:30P	7:40P	1	D	162	3:10P	4:50P	0	x 2, 3
*131	8:50P	10:25P	0	x 2, 3, 5	*124	10:25P	11:59P	0	x 2, 3, 6
<b>To San Jose</b>					<b>From San Jose</b>				
151	8:20A	9:55A	0	D	150	7:55A	10:15A	1	x 7
153	2:30P	5:00P	1	D	152	1:15P	3:35P	1	x 5, 7
155	5:00P	7:25P	1	x 6	153	5:20P	7:00P	0	x 5, 7

**SACRAMENTO (SMF) Res. 916-442-0353**

Flight #	Leave	Arrive	Stops/ Via	Freq.	Flight #	Leave	Arrive	Stops/ Via	Freq.
<b>To Boise</b>					<b>From Boise</b>				
707/118	10:40A	4:05P	SFO	x 6	151/964	7:45A	12:25P	SJC	x 6, 7
963/152	12:00N	6:05P	SJC	x 5, 6, 7	115/804	9:25A	11:55A	SFO	x 6
509/118	12:05P	4:05P	SFO	x 6, 7					
<b>To Los Angeles</b>					<b>From Los Angeles</b>				
499/111	6:15A	9:35A	SFO	x 6, 7	110/804	6:45A	11:55A	SFO	x 6
801/115	8:15A	11:30A	SFO	x 7	118/316	11:55A	2:50P	SFO	x 6, 7
605/121	5:15P	9:15P	SFO	x 6	120/566	3:50P	9:45P	SFO	x 6

Frequency code: x - Except, 1 - Monday, 2 - Tuesday, 3 - Wednesday, 4 - Thursday, 5 - Friday, 6 - Saturday, 7 - Sunday, D - Daily \* Indicates Midnight Express

**SACRAMENTO (SMF) Res. 916-442-0353**

Flight #	Leave	Arrive	Stops/ Via	Freq.	Flight #	Leave	Arrive	Stops/ Via	Freq.
<b>To Medford</b>					<b>From Medford</b>				
499/110	6:15A	9:15A	SFO	x 6, 7	121/566	6:35P	9:45P	SFO	x 6
<b>To Palm Springs</b>					<b>From Palm Springs</b>				
499/111	6:15A	10:40A	SFO	x 6, 7	152/966	11:30A	4:10P	SJC	x 5, 6, 7
707/161	10:45A	2:10P	SFO	x 6	162/306	1:20P	4:10P	SFO	x 6, 7
317/125	3:20P	6:55P	SFO	x 6, 7	126/566	7:20P	9:45P	SFO	x 6
<b>To Sacramento</b>					<b>From Sacramento</b>				
499/110	6:15A	10:20A	SFO	x 6, 7	115/804	7:00A	11:55A	SFO	x 6
707/118	10:45A	4:35P	SFO	x 6	161/604	10:45A	2:00P	SFO	x 6, 7
963/152	12:00N	3:35P	SJC	x 5, 6, 7	121/566	5:30P	9:45P	SFO	x 6

**SAN FRANCISCO (SFO) Res. 415-362-0676**

Flight #	Leave	Arrive	Stops/ Via	Freq.	Flight #	Leave	Arrive	Stops/ Via	Freq.
<b>To Boise</b>					<b>From Boise</b>				
110/150	8:15A	12:40P	PDX	x 6, 7	115	9:25A	9:55A	0	D
118	1:30P	4:05P	0	D	155/121	4:30P	7:40P	PDX	x 6
<b>To Chico</b>					<b>From Chico</b>				
602	11:50A	1:00P	0	D	111	7:15A	7:59A	0	D
318	4:30P	5:30P	0	x 6, 7	603	2:40P	3:50P	0	x 6
126	9:00P	9:45P	0	D	315	6:00P	7:00P	0	x 6
<b>To Los Angeles</b>					<b>From Los Angeles</b>				
111	8:20A	9:35A	0	D	110	6:45A	7:59A	0	D
115	10:15A	11:30A	0	D	118	11:55A	1:05A	0	D
121	8:00P	9:15P	0	D	130	3:50P	5:05P	0	D
*131	10:50P	11:59P	0	x 5, 6, 7	*124	8:55P	10:05P	0	x 6
<b>To Medford</b>					<b>From Medford</b>				
110	8:15A	9:15A	0	D	121	6:35P	7:40P	0	D
<b>To Palm Springs</b>					<b>From Palm Springs</b>				
111	8:20A	10:40A	1	D	162	1:20P	2:45P	0	D
161	12:45P	2:10P	0	D	120	2:45P	5:05P	1	D
125	5:35P	6:55P	0	D	126	7:20P	8:40P	0	D
<b>To Portland</b>					<b>From Portland</b>				
110	8:15A	10:20A	1	D	115	7:00A	9:55A	1	D
118	1:30P	4:35P	1	D	161	10:45A	12:20P	0	D
162	3:10P	4:50P	0	x 2, 3	121	5:30P	7:40P	1	D
*124	10:25P	11:59P	0	x 2, 3, 6	*131	8:50P	10:25P	0	x 2, 3, 5

**SAN JOSE (SJC) Res. 408-293-2199**

Flight #	Leave	Arrive	Stops/ Via	Freq.	Flight #	Leave	Arrive	Stops/ Via	Freq.
<b>To Boise</b>					<b>From Boise</b>				
150	7:55A	12:40P	2	x 6, 7	151	7:45A	9:55A	1	x 7
152	1:15P	6:05P	2	x 5, 7	153	2:00P	5:00P	2	x 6
155	4:30P	7:25P	2	x 6	155	4:30P	7:25P	2	x 6
156	5:20P	9:30P	1	5, 7					
<b>To Fresno</b>					<b>From Fresno</b>				
971	7:45A	8:40A	0	x 6, 7	150	6:55A	7:35A	0	x 7
963	12:50P	1:45P	0	x 6, 7	964	10:40A	11:35A	0	x 6, 7
967	5:15P	6:10P	0	x 6	968	3:50P	4:45P	0	x 6, 7
155	7:45P	8:20P	0	x 6	972	6:30P	7:25P	0	x 6

**SAN JOSE (SJC) Res. 408-293-2199**

Flight #	Leave	Arrive	Stops/ Via	Freq.	Flight #	Leave	Arrive	Stops/ Via	Freq.
<b>To Oakland</b>					<b>From Oakland</b>				
150	7:55A	8:15A	0	x 7	153	4:30P	5:00P	0	D
151	10:15A	10:35A	0	x 5, 7	156	4:30P	5:00P	0	5, 7
152	1:15P	1:35P	0	x 5, 7	155	6:55P	7:25P	0	x 6
154	1:15P	1:35P	0	5, 7					
158	5:50P	6:10P	0	5, 7					
<b>To Palm Springs</b>					<b>From Palm Springs</b>				
151	10:15A	12:25P	1	D	152	11:30A	12:55P	0	x 5, 7
154	1:15P	3:25P	1	5, 7	154	11:30A	1:35P	1	5, 7
					158	4:10P	6:10P	1	5, 7
<b>To Portland</b>					<b>From Portland</b>				
150	7:55A	10:15A	1	x 7	151	8:20A	9:55A	0	D
152	1:15P	3:35P	1	x 5, 7	153	2:30P	5:00P	1	D
153	5:20P	7:00P	0	x 5, 7	155	5:00P	7:25P	1	x 6
156	5:20P	7:00P	0	5, 7					
158	5:50P	8:05P	1	5, 7					

**SANTA ROSA (STS) Res. 707-585-3771**

Flight #	Leave	Arrive	Stops/ Via	Freq.	Flight #	Leave	Arrive	Stops/ Via	Freq.
<b>To Los Angeles</b>					<b>From Los Angeles</b>				
211/115	8:30A	11:30A	SFO	x 6, 7	120/412	3:50P	7:00P	SFO	x 6
<b>To Palm Springs</b>					<b>From Palm Springs</b>				
211/161	8:30A	2:10P	SFO	6, 7	162/412	1:20P	2:45P	SFO	x 6
311/125	1:00P	6:55P	SFO	x 6, 7	120/412	2:45P	7:00P	SFO	x 6

**STOCKTON (SCK) Res. 209-474-0256**

Flight #	Leave	Arrive	Stops/ Via	Freq.	Flight #	Leave	Arrive	Stops/ Via	Freq.
<b>To Fresno</b>					<b>From Fresno</b>				
141	8:30A	9:00A	0	x 7	140	7:35A	8:10A	0	x 7
143	2:25P	3:00P	0	D	142	1:30P	2:05P	0	D
145	6:45P	7:20P	0	x 6	144	5:50P	6:25P	0	x 6
<b>To Los Angeles</b>					<b>From Los Angeles</b>				
141	8:30A	10:00A	1	x 7	140	6:30A	7:20A	0	x 7
143	2:25P	4:05P	1	D	142	12:25P	1:15P	0	D
145	6:45P	8:25P	1	x 6	144	4:45P	5:35P	0	x 6
<b>To Palm Springs</b>					<b>From Palm Springs</b>				
931/111	6:30A	10:40A	SFO	x 7	120/144	2:45P	6:25P	LAX	x 6
933/161	10:20A	2:10P	SFO	x 6, 7					

**VANCOUVER (YVR) Res. 604-682-1411**

Flight #	Leave	Arrive	Stops/ Via	Freq.	Flight #	Leave	Arrive	Stops/ Via	Freq.
<b>To Palm Springs</b>					<b>From Palm Springs</b>				
CP130/161	8:30A	2:10P	SFO	D	162/CP133	1:20P	7:35P	SFO	D
CP132/125	2:30P	6:55P	SFO	D	120/CP103	2:45P	9:30P	LAX	D

\*Flights to and from Vancouver and Palm Springs are connecting service on C.P. Air.

Frequency code: x - Except, 1 - Monday, 2 - Tuesday, 3 - Wednesday, 4 - Thursday, 5 - Friday, 6 - Saturday, 7 - Sunday, D - Daily \* Indicates Midnight Express



# MORE SERVICE TO PALM SPRINGS...

...FROM  
**SAN FRANCISCO,  
SAN JOSE, OAKLAND,  
PORTLAND, BOISE,  
MEDFORD, CHICO, AND  
LOS ANGELES.**

Only Pacific Express can jet you to Palm Springs from all these cities and give you more for the price.

Complimentary beverages, wine, beer and cocktails\* on all flights. Complimentary Continental Breakfast on all flights departing before 9 a.m. We let you select your favorite seat. And give you loads of leg room. And extra room to store your carry-on luggage. On our jets you get flight attendants who really care. All for lower fares in the air. Pacific Express, no wonder we're taking off... the Pacific Express way.

\*Beverages and Continental Breakfast included in the price of ticket (except the Midnight Express).



## GENERAL INFORMATION

**CREDIT CARDS**—Pacific Express will accept American Express, Master Charge, BankAmericard/Visa, Universal Air Travel Cards, Carte Blanche, and Diner's Club.

### AIRCRAFT

Pacific Express utilizes BAC 1-11 jet aircraft on flights #100-199. WestAir Commuter utilizes Cessna 402 (Prop) and De Havilland Dash-6 jet props on flights #200-999.

### SECURITY

For your security all passengers and their handcarried items must be inspected in accordance with the government-sponsored security program. Passengers should proceed through security inspection at least 30 minutes prior to departure time.

### CHECK-IN

Pacific Express requests that passengers be at the Pacific Express boarding gate for check-in at least 20 minutes before scheduled departure time. Reservations of passengers presenting themselves at the Pacific Express boarding gate less than 10 MINUTES before the scheduled departure of a flight will be subject to cancellation.

### BAGGAGE

**BAGGAGE LIABILITY**—Passenger name identification must be placed on the outside of all checked baggage. Baggage identification labels are available from Pacific Express at no cost. Liability for baggage between points in the U.S. will not exceed \$750.00 unless you declare a higher valuation and pay an extra charge. Excess valuation cannot be declared for certain checked valuable items such as jewelry, negotiable instruments, currency and antiques.

**FREE BAGGAGE ALLOWANCE**—(Per Passenger) 1 piece of baggage with linear dimensions (length + height + width) not exceeding 62 inches, plus 1 piece of baggage with linear dimensions not exceeding 55 inches. One or more additional pieces, totaling not more than 45 inches may be carried on board provided it fits beneath the seat; approximate dimensions not to exceed 10" x 16" x 19". In addition to size, no single piece can weigh more than 70 pounds.

**EXCESS BAGGAGE**—A standard fee of \$7.00 will be charged for each of the first four pieces, and \$28.00 for each additional piece. The items listed below are subject to the special charges regardless of the total baggage carried.

Bicycles—\$14.00

Scuba Gear—\$7.00

Surfboards—\$14.00

Household Pets—\$21.00

### ARTICLES THAT ARE RESTRICTED IN PASSENGER BAGGAGE

Medicinal and toilet articles necessary for the passenger during the journey in quantities that do not exceed 75 ounces (net weight ounces and fluid ounces), and the capacity of each container other than an aerosol container, does not exceed 16 fluid ounces or 1 pound of material may be carried without prior approval but for safety reasons, restricted articles, such as those listed below shall not be carried in the passenger's baggage without consent of and prior arrangement with the carrier:

Compressed gases (flammable, non-flammable and poisonous); Corrosives (such as acids, alkalis and wet cell batteries); Explosives, munitions, fireworks and flares; Flammable liquids and solids (such as lighter or heating fuels, matches and articles which are easily ignited); Oxidizing materials (such as bleaching powder and peroxides); Poisons and tear gases; Radioactive materials; Other restricted articles (such as mercury, magnetized materials, offensive or irritating materials).

### NO SMOKING

Sections are provided on all Pacific Express aircraft for non-smokers. Generally, the forward portion of the aircraft is reserved for non-smokers. Signs are posted in the cabin designating the no smoking sections.

### DENIED BOARDING COMPENSATION

Compensation will be paid if the flight for which you have a confirmed reservation is unable to accommodate you and departs without you. Subject to the exceptions prescribed in the tariff on file, compensation will be in amounts from \$37.50 to \$200.00 depending upon the ticket value.



Pacific Express and WestAir  
General Offices  
1103 Fortress Street  
Chico CA 95926 (916) 893-6500