

**PACIFIC
EXPRESS™**

System Time Table
Effective February 1, 1983



**NEW
SACRAMENTO,
BAKERSFIELD,
LAS VEGAS AND
RENO SERVICE**

*...and more flights to
Palm Springs than any
other airline*

ROLLS ROYCE POWERED JET SERVICE TO THE WEST



PACIFIC EXPRESS™

System Time Table
Effective February 1, 1983



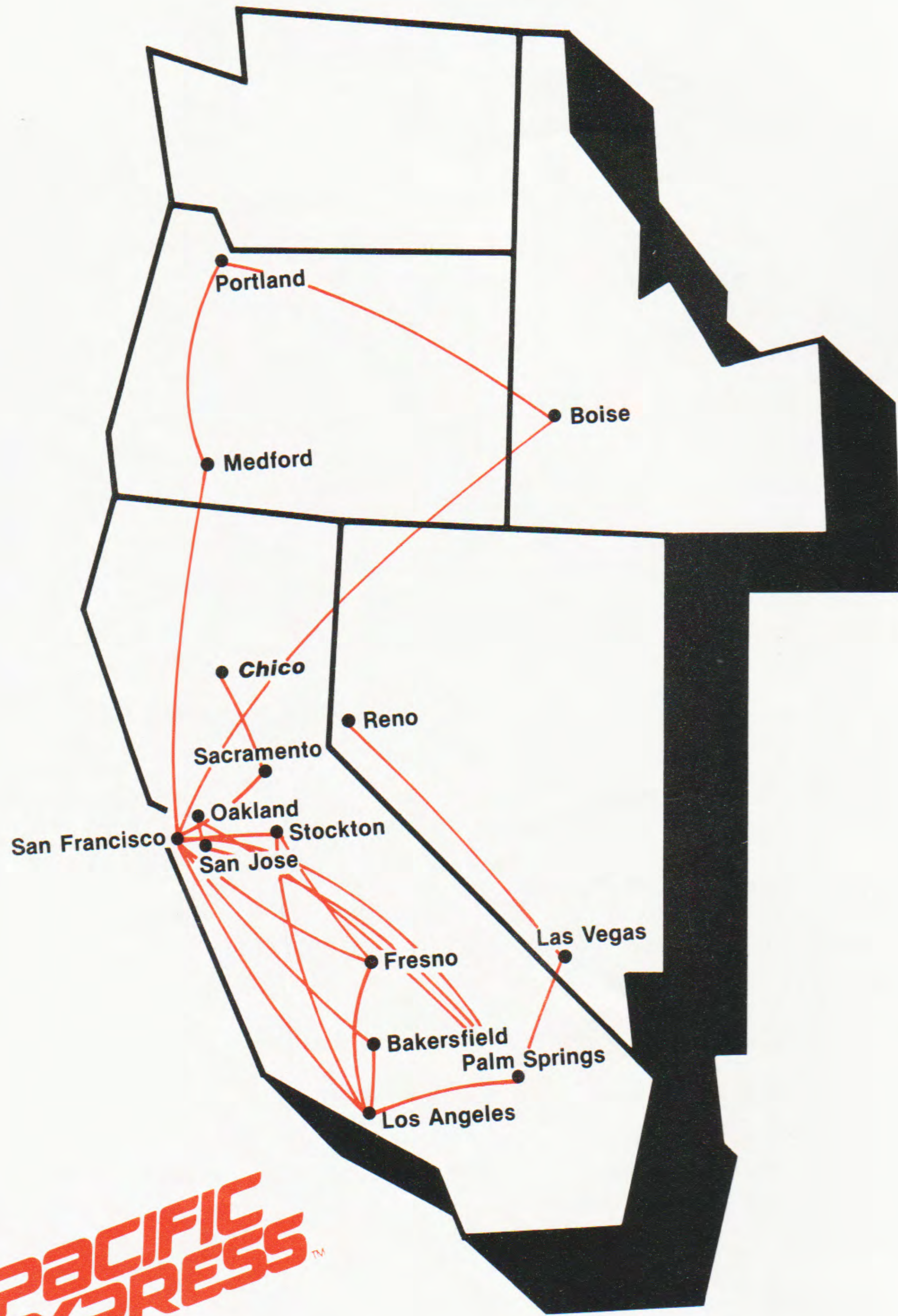
**NEW
SACRAMENTO,
BAKERSFIELD,
LAS VEGAS AND
RENO SERVICE**
*... and more flights to
Palm Springs than any
other airline*

PACIFIC EXPRESS™

Call Your Travel Agent

**INTRODUCING THE AIRLINE THAT GIVES YOU MORE...
 MORE LEG ROOM, MORE CARRY-ON LUGGAGE SPACE,
 WITH COMPLIMENTARY BEVERAGES, WINE, BEER, AND
 COCKTAILS*. CONTINENTAL BREAKFAST ON ALL
 FLIGHTS BEFORE 9 AM.**

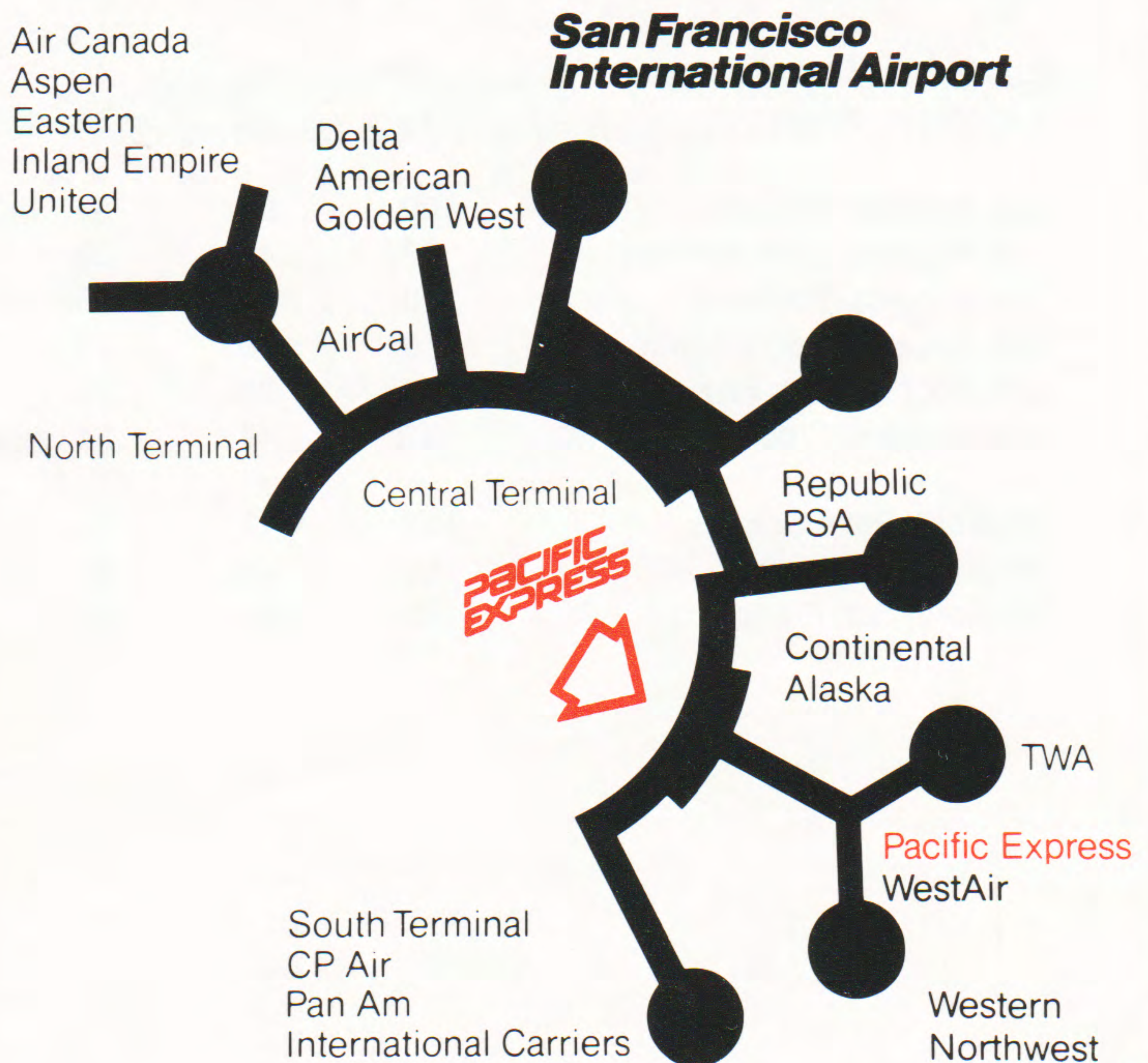
ALL FLIGHTS PROVIDED WITH ROLLS ROYCE POWERED ONE ELEVEN TWIN JETS.



PACIFIC EXPRESS™

**NEW JET SERVICE TO
 RENO, LAS VEGAS,
 SACRAMENTO
 AND BAKERSFIELD.**

*Beverages, Cocktails and Continental Breakfast are included in the price of the ticket.



EXPRESS FARE SUMMARY

Effective February 1 1983

All fares are one-way and include 8% Transportation Tax. All fares and schedules are subject to change without notice. Fares listed for non-stop and direct flights only.

City Pair	K	B	KCH
Bakersfield - Boise	\$110.	\$ 90.	\$ 55.
Bakersfield - Chico	91.	81.	46.
Bakersfield - Los Angeles	49.	39.	25.
Bakersfield - Medford	104.	84.	52.
Bakersfield - Palm Springs	67.	47.	34.
Bakersfield - Portland	110.	90.	55.
Bakersfield - Sacramento	71.	61.	36.
Bakersfield - San Francisco	71.	61.	36.
Boise - Chico	107.	87.	54.
Boise - Los Angeles	110.	90.	55.
Boise - Palm Springs	127.	107.	64.
Boise - Portland	83.	63.	42.
Boise - San Francisco	89.	69.	45.
Chico - Los Angeles	85.	65.	43.
Chico - Medford	107.	87.	54.
Chico - Palm Springs	97.	77.	49.
Chico - Sacramento	30.	20.	15.
Chico - San Francisco	50.	30.	25.
Fresno - Los Angeles	47.	39.	24.
Fresno - Palm Springs	89.	69.	45.
Fresno - Sacramento	47.	39.	24.
Fresno - San Francisco	47.	39.	24.
Fresno - Stockton	30.	20.	15.
Las Vegas - Palm Springs	83.	63.	42.
Las Vegas - Reno	75.	55.	38.
Los Angeles - Medford	102.	84.	51.
Los Angeles - Palm Springs	57.	47.	29.
Los Angeles - Portland	110.	90.	55.
Los Angeles - Sacramento	50.	39.	25.
Los Angeles - San Francisco	49.	39.	25.
Los Angeles - Stockton	67.	47.	34.
Medford - Palm Springs	137.	117.	69.
Medford - Portland	69.	49.	35.
Medford - San Francisco	69.	49.	35.

Oakland - Palm Springs	89.	69.	45.
Oakland - San Jose	17.	10.	10.
Palm Springs - Portland	145.	125.	73.
Palm Springs - Reno	139.	119.	70.
Palm Springs - Sacramento	99.	79.	50.
Palm Springs - San Francisco	89.	69.	45.
Palm Springs - San Jose	89.	69.	45.
Portland - San Francisco	75.	65.	38.
Sacramento - San Francisco	31.	21.	16.
San Francisco - Stockton	45.	35.	23.
San Jose - Stockton	45.	35.	23.

K = Economy
B = Advance Purchase

KCH = Children

Ask your travel agent or call Pacific Express reservations about further discounts, which include stand-by fares, military fares, senior citizen fares, student fares, and family travel discounts.

PACIFIC EXPRESS PAC

\$15. Small package airport to airport service. (up to 25 pounds) \$30. (26 to 50 pounds)

RESERVATIONS AND INFORMATION

Please call your Travel Agent or Pacific Express.

Anaheim	714-761-9110
Bakersfield	1-800-JET-TRIP
Boise	208-342-3542
Chico	916-893-4929
Compton	213-630-6885
Culver City	213-202-8089
Eureka	707-445-8456
Fremont	415-794-8441
Fresno	1-800-JET-TRIP
Glendale	213-507-7665
Hayward	415-881-4700
Inglewood	213-671-4038
Las Vegas	1-800-JET-TRIP
Los Angeles	213-485-0294
Medford	1-800-JET-TRIP
Oakland	415-836-6176
Pasadena	213-796-4994
Palm Springs	714-320-7921
Portland	503-226-0194
Redding	916-221-1890
Reno	1-800-JET-TRIP
Riverside	714-359-5115
Sacramento	916-442-0353
San Francisco	415-362-0676
San Jose	408-293-2199
San Rafael	415-499-0562
Santa Rosa	707-585-3771
Sunnyvale	408-749-8800
Stockton	209-474-0256
Van Nuys	213-994-6501
Ventura	805-653-6155

Anywhere in U.S. including California
1-800-JET-TRIP
(1-800-538-8747)



"Fly the Pacific Express Way"

BAKERSFIELD (BFL) Res. 1-800-JET-TRIP

Flight #	Leave	Arrive	Stops/ Via	Freq.	Flight #	Leave	Arrive	Stops/ Via	Freq.
To Boise					From Boise				
130/142	7:50A	1:10P	SFO	x6,7	137	1:30P	4:55P	2	6
					133	5:00P	6:50P	1	x6
To Chico					From Chico				
132	5:50P	8:25P	2	x5,6,7	131	6:45A	9:30A	2	x6,7
To Los Angeles					From Los Angeles				
131	9:50A	10:20A	0	x6,7	130	7:00A	7:30A	0	x7
135	9:50A	10:20A	0	6	132	5:00P	5:30P	0	D
137	5:15P	5:45P	0	6					
133	7:10P	7:40P	0	x6					
To Medford					From Medford				
130	7:50A	10:05A	1	x7	Call Your Travel Agent				
To Palm Springs					From Palm Springs				
131/115	9:50A	1:55P	LAX	x6,7	132	4:00P	5:30P	1	D
To Portland					From Portland				
130	7:50A	11:10A	2	x7	137	2:00P	4:55P	1	6
					133	2:25P	6:50P	2	x2,3,6
To Sacramento					From Sacramento				
132	5:50P	7:35P	1	x5,6,7	131	7:35A	9:30A	1	x6,7
To San Francisco					From San Francisco				
130	7:50A	8:45A	0	x7	135	8:00A	9:30A	1	6
132	5:50P	6:45P	0	D	131	8:30A	9:30A	0	x6,7
					137	4:00P	4:55P	0	6
					133	5:55P	6:50P	0	x6

BOISE (BOI) Res. 208-342-3542

Flight #	Leave	Arrive	Stops/ Via	Freq.	Flight #	Leave	Arrive	Stops/ Via	Freq.
To Bakersfield					From Bakersfield				
137	1:30P	4:55P	2	6	130/142	7:50A	1:10P	SFO	x6,7
133	5:00P	6:50P	1	x6					
To Chico					From Chico				
137/164	1:30P	5:30P	SFO	6	131/142	6:45A	1:10P	SFO	x6,7
133/132	5:00P	8:25P	SFO	x5,6,7	161/144	8:30A	1:10P	SFO	6
To Los Angeles					From Los Angeles				
115	10:30A	12:59P	1	D	144	7:50A	1:10P	3	6
133	5:00P	7:40P	2	x6	142	8:30A	1:10P	2	x6
117	9:20P	11:30P	1	5,7	116	1:45P	5:50P	1	x6
					110	1:45P	7:25P	2	6
					118	8:10P	11:15P	1	5,7
To Medford					From Medford				
114/163	7:20P	12:30P	PDX	x7	130/133	10:20A	4:35P	PDX	x2,3,6,7
To Palm Springs					From Palm Springs				
115	10:30A	1:55P	2	D	116	12:40P	5:50P	2	x6
					110	12:40P	7:25P	3	6
To Portland					From Portland				
114	7:20A	7:29A	0	x7	115	8:00A	10:09A	0	x7
142	1:30P	1:39P	0	x2,3,6	133	2:25P	4:34P	0	x2,3,6
137	1:30P	1:39P	0	6	110	5:20P	7:25P	0	6
116	6:10P	6:15P	0	x6	117	6:45P	8:50P	0	x6

Pacific Express utilizes BAC 1-11 jet aircraft on flights.

BOISE (BOI) Con't. Res. 208-342-3542

Flight #	Leave	Arrive	Stops/ Via	Freq.	Flight #	Leave	Arrive	Stops/ Via	Freq.
To Sacramento					From Sacramento				
137/164	1:30P	4:35P	SFO	6	131/142	7:35A	1:10P	SFO	x6,7
133/132	5:00P	7:35P	SFO	x5,6,7	161/144	9:20A	1:10P	SFO	6
133/168	5:00P	9:25P	SFO	5,7	122/142	9:20A	1:10P	SFO	x6,7
To San Francisco					From San Francisco				
115	10:30A	11:15A	0	D	142	10:35A	1:10P	0	x6
137	1:30P	3:40P	1	6	144	10:35A	1:10P	0	6
133	5:00P	5:40P	0	x6	116	3:15P	5:50P	0	x6
117	9:20P	10:00P	0	5,7	110	3:20P	7:25P	1	6
					118	9:45P	11:15P	0	5,7

CHICO (CIC) Res. 916-893-4929

Flight #	Leave	Arrive	Stops/ Via	Freq.	Flight #	Leave	Arrive	Stops/ Via	Freq.
To Bakersfield					From Bakersfield				
131	6:45A	9:30A	2	x6,7	132	5:50P	8:25P	2	x5,6,7
To Boise					From Boise				
131/142	6:45A	1:10P	SFO	x6,7	137/164	1:30P	5:30P	SFO	6
161/144	8:30A	1:10P	SFO	6	133/132	5:00P	8:25P	SFO	x5,6,7
To Los Angeles					From Los Angeles				
131	6:45A	10:20A	3	x6,7	110/164	1:45P	5:30P	SFO	6
161/115	8:30A	12:59P	SFO	6,7	132	5:00P	8:25P	3	x5,6,7
					132/168	5:00P	10:15P	SFO	5,7
To Medford					From Medford				
131/130	6:45A	10:05A	SFO	x6,7	163/164	12:45P	SFO	6	
To Palm Springs					From Palm Springs				
131/161	6:45A	11:30A	SFO	x6,7	164	2:25P	5:30P	2	6
161	8:30A	11:30A	2	6,7	132	4:00P	8:25P	4	x5,6,7
					168	7:20P	10:15P	2	5,7
To Portland					From Portland				
131/130	6:45A	11:10A	SFO	x6,7	137/164	2:00P	5:30P	SFO	6
161/144	8:30A	1:39P	SFO	6	133/132	2:25P	8:25P	SFO	1,4
161/142	8:30A	1:39P	SFO	7					
To Sacramento					From Sacramento				
131	6:45A	7:15A	0	x6,7	164	5:00P	5:30P	0	6
161	8:30A	9:00A	0	6,7	132	7:55P	8:25P	0	x5,6,7
					168	9:45P	10:15P	0	5,7
To San Francisco					From San Francisco				
131	6:45A	8:05A	1	x6,7	164	4:05P	5:30P	1	6
161	8:30A	9:50A	1	6,7	132	7:05P	8:25P	1	x5,6,7
					168	8:55P	10:15P	1	5,7

FRESNO (FAT) Res. 800-JET-TRIP

Flight #	Leave	Arrive	Stops/ Via	Freq.	Flight #	Leave	Arrive	Stops/ Via	Freq.
To Los Angeles					From Los Angeles				
123	8:50A	9:45A	0	D	122	7:10A	8:00A	0	x6,7
125	3:05P	4:00P	0	x6	144	7:50A	8:45A	0	6
127	6:00P	6:55P	0	x6	124	11:00A	11:55A	0	x6
147	6:00P	6:55P	0	6	148	3:00P	3:55P	0	6
					126	7:30P	8:25P	0	x6

Frequency code: x - Except, 1 - Monday, 2 - Tuesday, 3 - Wednesday, 4 - Thursday, 5 - Friday, 6 - Saturday, 7 - Sunday, D - Daily

FRESNO (FAT) Con't. Res. 1-800-JET-TRIP

Flight #	Leave	Arrive	Stops/ Via	Freq.	Flight #	Leave	Arrive	Stops/ Via	Freq.
To Medford					From Medford				
120/130	6:20A	10:05A	SFO	x7	163/127	12:45P	5:40P	SFO	x6
To Palm Springs					From Palm Springs				
123	8:50A	10:45A	1	D	110/148	12:40P	3:55P	LAX	6
					132/126	4:00P	8:25P	LAX	x6
To Portland					From Portland				
120/130	6:20A	11:10A	SFO	x7	115/125	8:00A	2:45P	SFO	x6,7
122/142	8:15A	1:39P	SFO	x2,3,6,7	163/127	11:40A	5:40P	SFO	x6
144	9:05A	1:39P	3	6					
To Sacramento					From Sacramento				
122	8:15A	9:00A	0	x6,7	127	4:55P	5:40P	0	x6
To San Francisco					From San Francisco				
120	6:20A	7:05A	0	x7	123	7:45A	8:30A	0	D
122	8:15A	9:50A	1	x6,7	125	1:55P	2:45P	0	x6
144	9:05A	10:15A	1	6	127	4:05P	5:40P	1	x6
124	12:15P	12:59P	0	x6	129	9:55P	10:40P	0	x6
126	8:40P	9:25P	0	x6					
To Stockton					From Stockton				
144	9:05A	9:35A	0	6	147	5:10P	5:40P	0	6
148	4:10P	4:40P	0	6					

LAS VEGAS (LAS) Res. 1-800-JET-TRIP

Flight #	Leave	Arrive	Stops/ Via	Freq.	Flight #	Leave	Arrive	Stops/ Via	Freq.
To Palm Springs					From Palm Springs				
173	10:35A	11:25A	0	x7	176	3:30P	4:10P	0	D
175	2:00P	2:50P	0	7					
To Reno					From Reno				
172	7:15A	8:30A	0	x7	173	9:00A	10:15A	0	x7
174	10:45A	11:55A	0	7	175	12:30P	1:45P	0	7
176	4:30P	5:45P	0	D	177	6:15P	7:30P	0	D

LOS ANGELES (LAX) Res. 213-485-0294

Flight #	Leave	Arrive	Stops/ Via	Freq.	Flight #	Leave	Arrive	Stops/ Via	Freq.
To Bakersfield					From Bakersfield				
130	7:00A	7:30A	0	x7	131	9:50A	10:20A	0	x6,7
132	5:00P	5:30P	0	D	135	9:50A	10:20A	0	6
					137	5:15P	5:45P	0	6
					133	7:10P	7:40P	0	x6
To Boise					From Boise				
144	7:50A	1:10P	3	6	115	10:30A	12:59P	1	0
142	8:30A	1:10P	2	x6	133	5:00P	7:40P	2	x6
116	1:45P	5:50P	1	x6	117	9:20P	11:30P	1	5,7
110	1:45P	7:25P	2	6					
118	8:10P	11:15P	1	5,7					
To Chico					From Chico				
110/164	1:45P	5:30P	SFO	6	131	6:45A	10:20A	3	x6,7
132	5:00P	8:25P	3	x5,6,7	161/115	8:30A	12:59P	SFO	6,7
132/168	5:00P	10:15P	SFO	5,7					

Pacific Express utilizes BAC 1-11 jet aircraft on flights.

LOS ANGELES (LAX) Con't. Res. 213-485-0294

Flight #	Leave	Arrive	Stops/ Via	Freq.	Flight #	Leave	Arrive	Stops/ Via	Freq.
To Fresno					From Fresno				
122	7:10A	8:00A	0	x6,7	123	8:50A	9:45A	0	D
144	7:50A	8:45A	0	6	125	3:05P	4:00P	0	x6
124	11:00A	11:55A	0	x6	127	6:00P	6:55P	0	x6
148	3:00P	3:55P	0	6	147	6:00P	6:55P	0	6
126	7:30P	8:25P	0	x6					

Flight #	Leave	Arrive	Stops/ Via	Freq.	Flight #	Leave	Arrive	Stops/ Via	Freq.
To Medford					From Medford				
130	7:00A	10:05A	2	x7	163/127	12:45P	6:55P	SFO	x6
					163/137	12:45P	5:45P	SFO	6

Flight #	Leave	Arrive	Stops/ Via	Freq.	Flight #	Leave	Arrive	Stops/ Via	Freq.
To Palm Springs					From Palm Springs				
123	10:05A	10:45A	0	D	110	12:40P	1:25P	0	6
115	1:15P	1:55P	0	D	116	12:40P	1:25P	0	x6
					132	4:00P	4:40P	0	D
					160	9:00P	9:40P	0	5,7

Flight #	Leave	Arrive	Stops/ Via	Freq.	Flight #	Leave	Arrive	Stops/ Via	Freq.
To Portland					From Portland				
130	7:00A	11:10A	3	x7	115	8:00A	12:59P	2	x7
144	7:50A	1:39P	4	6	137	2:00P	5:45P	2	6
142	8:30A	1:39P	3	x2,3,6	133	2:25P	7:40P	3	x2,3,6
116	1:45P	6:15P	2	x6	117	6:45P	11:30P	2	5,7
110	1:45P	5:00P	1	6					

Flight #	Leave	Arrive	Stops/ Via	Freq.	Flight #	Leave	Arrive	Stops/ Via	Freq.
To Sacramento					From Sacramento				
122	7:10A	9:00A	1	x6,7	131	7:35A	10:20A	2	x6,7
132	5:00P	7:35P	2	x5,6,7	127	4:55P	6:55P	1	x6

Flight #	Leave	Arrive	Stops/ Via	Freq.	Flight #	Leave	Arrive	Stops/ Via	Freq.
To San Francisco					From San Francisco				
130	7:00A	8:45A	1	x7	141	6:15A	7:59A	1	x6,7
122	7:10A	9:50A	2	x6,7	123	7:45A	9:45A	1	D
144	7:50A	10:15A	2	6	135	8:00A	10:20A	2	6
142	8:30A	10:15A	1	x6	131	8:30A	10:20A	1	x6,7
124	11:00A	12:59P	1	x6	115	11:40A	12:59P	0	D
116	1:45P	3:00P	0	x6	125	1:55P	4:00P	1	x6
110	1:45P	3:00P	0	6	137	4:00P	5:45P	1	6
132	5:00P	6:45P	1	D	127	4:05P	6:55P	2	x6
126	7:30P	9:25P	1	x6	133	5:55P	7:40P	1	x6
118	8:10P	9:25P	0	5,7	117	10:15P	11:30P	0	5,7
160	10:00P	11:15P	0	5,7					

Flight #	Leave	Arrive	Stops/ Via	Freq.	Flight #	Leave	Arrive	Stops/ Via	Freq.
To Stockton					From Stockton				
144	7:50A	9:35A	1	6	141	7:00A	7:59A	0	x6,7
142	8:30A	9:35A	0	x6	135	8:50A	10:20A	1	6
148	3:00P	4:40P	1	6	147	5:10P	6:55P	1	6
146	5:15P	6:20P	0	x6	145	6:50P	8:00P	0	x6

Frequency code: x - Except, 1 - Monday, 2 - Tuesday, 3 - Wednesday, 4 - Thursday, 5 - Friday, 6 - Saturday, 7 - Sunday, D - Daily

MEDFORD (MFR) Res. 1-800-JET-TRIP

Flight #	Leave	Arrive	Stops/ Via	Freq.	Flight #	Leave	Arrive	Stops/ Via	Freq.
To Bakersfield					From Bakersfield				
163/133	12:45P	6:50P	SFO	x6	130	7:50A	10:05A	1	x7

Flight #	Leave	Arrive	Stops/ Via	Freq.	Flight #	Leave	Arrive	Stops/ Via	Freq.
To Boise					From Boise				
130/133	10:20A	4:34P	PDX	x2,3,6,7	114/163	7:20P	12:30P	PDX	x7

Flight #	Leave	Arrive	Stops/ Via	Freq.	Flight #	Leave	Arrive	Stops/ Via	Freq.
To Chico					From Chico				
163/164	12:45P	5:30P	SFO	6	131/130	6:45A	10:05A	SFO	x6,7

Flight #	Leave	Arrive	Stops/ Via	Freq.	Flight #	Leave	Arrive	Stops/ Via	Freq.
To Fresno					From Fresno				
163/127	12:45P	5:40P	SFO	x6	120/130	6:20A	10:05A	SFO	x7

Flight #	Leave	Arrive	Stops/ Via	Freq.	Flight #	Leave	Arrive	Stops/ Via	Freq.
To Los Angeles					From Los Angeles				
163/127	12:45P	6:55P	SFO	x6	130	7:00A	10:05A	2	x7
163/137	12:45P	5:45P	SFO	6					

Flight #	Leave	Arrive	Stops/ Via	Freq.	Flight #	Leave	Arrive	Stops/ Via	Freq.
To Palm Springs					From Palm Springs				
163	12:45P	3:30P	1	D					Call Your Travel Agent

Flight #	Leave	Arrive	Stops/ Via	Freq.	Flight #	Leave	Arrive	Stops/ Via	Freq.
To Portland					From Portland				
130	10:20A	11:10A	0	D	163	11:40P	12:30P	0	D

Flight #	Leave	Arrive	Stops/ Via	Freq.	Flight #	Leave	Arrive	Stops/ Via	Freq.
To San Francisco					From San Francisco				
163	12:45P	1:50P	0	D	130	9:00A	10:05A	0	D

OAKLAND (OAK) Res. 415-836-6176

Flight #	Leave	Arrive	Stops/ Via	Freq.	Flight #	Leave	Arrive	Stops/ Via	Freq.
To Palm Springs					From Palm Springs				
162	1:25P	2:45P	0	D	162	11:15A	1:05P	1	D
166	5:35P	6:55P	0	x6	166	3:15P	5:15P	1	x6

Flight #	Leave	Arrive	Stops/ Via	Freq.	Flight #	Leave	Arrive	Stops/ Via	Freq.
To San Jose					From San Jose				
					162	12:55P	1:05P	0	D
					166	4:55P	5:15P	0	x6

PALM SPRINGS (PSP) Res. 714-320-7921

Flight #	Leave	Arrive	Stops/ Via	Freq.	Flight #	Leave	Arrive	Stops/ Via	Freq.
To Bakersfield					From Bakersfield				
132	4:00P	5:30P	1	D	131/115	9:50A	1:55P	LAX	x6,7
To Boise					From Boise				
116	12:40P	5:50P	2	x6	115	10:30A	1:55P	2	D
110	12:40P	7:25P	3	6					

Pacific Express utilizes BAC 1-11 jet aircraft on flights.

PALM SPRINGS (PSP) Con't. Res. 714-320-7921

Flight #	Leave	Arrive	Stops/ Via	Freq.	Flight #	Leave	Arrive	Stops/ Via	Freq.
To Chico					From Chico				
164	2:25P	5:30P	2	6	131/161	6:45P	11:30P	SFO	x6,7
132	4:00P	8:25P	4	x5,6,7	161	8:30A	11:30A	2	6,7
168	7:20P	10:15P	2	5,7					
To Fresno					From Fresno				
110/148	12:40P	3:55P	LAX	6	123	8:50A	10:45A	1	D
132/126	4:00P	8:25P	LAX	x6					
To Las Vegas					From Las Vegas				
176	3:30P	4:10P	0	P	173	10:35A	11:25A	0	x7
					175	2:00P	2:50P	0	7
To Los Angeles					From Los Angeles				
110	12:40P	1:25P	0	6	123	10:05A	10:45A	D	
116	12:40P	1:25P	0	x6	115	1:15P	1:55P	0	D
132	4:00P	4:40P	0	D					
160	9:00P	9:40P	0	5,7					
To Medford					From Medford				
Call Your Travel Agent					163	12:45P	3:30P	1	D
To Oakland					From Oakland				
162	11:15A	1:05P	1	D	162	1:25P	2:45P	0	D
166	3:15P	5:15P	1	x6	166	5:35P	6:55P	0	x6
To Portland					From Portland				
116	12:40P	6:15P	3	x6	115	8:00A	1:55P	3	x7
110	12:40P	5:00P	2	6	163	11:40A	3:30P	2	D
To Reno					From Reno				
176	3:30P	5:45P	1	D	173	9:00A	11:25A	1	x7
					175	12:30P	2:50P	1	7
To Sacramento					From Sacramento				
164	2:25P	4:35P	1	D	161	9:20A	11:30A	1	D
132	4:00P	7:35P	3	x5,6,7					
168	7:20P	9:25P	1	5,7					
To San Francisco					From San Francisco				
110	12:40P	3:00P	1	6	123	7:45A	10:45A	2	D
116	12:40P	3:00P	1	x6	161	10:10A	11:30A	0	D
164	2:25P	3:45P	0	D	115	11:40A	1:55P	1	D
132	4:00P	6:45P	2	D	163	2:10P	3:30P	0	D
170	5:40P	7:00P	0	6	165	7:15P	8:35P	0	5,7
168	7:20P	8:40P	0	x6					
160	9:00P	11:15P	1	5,7					
To San Jose					From San Jose				
162	1:15A	12:35P	0	D	162	12:55P	2:45P	1	D
166	3:15P	4:35P	0	x6	166	4:55P	6:55P	1	x6
To Stockton					From Stockton				
110/148	12:40P	4:40P	LAX	6	141/123	7:00A	10:45A	LAX	x6,7
132/146	4:00P	6:20P	LAX	x6	142/115	9:50A	1:55P	SFO	x6
To Vancouver (YVR)					From Vancouver				
164/cp133	2:25P	7:35P	SFO	D	cp130/115	8:30A	1:55P	SFO	D
132/cp103	4:00P	9:30P	LAX	D					

Vancouver for Palm Springs are connecting services on C.P. Air.

Frequency code: x - Except, 1 - Monday, 2 - Tuesday, 3 - Wednesday, 4 - Thursday, 5 - Friday, 6 - Saturday, 7 - Sunday, D - Daily,

PORTLAND (PDX) Res. 503-226-0194

Flight #	Leave	Arrive	Stops/ Via	Freq.	Flight #	Leave	Arrive	Stops/ Via	Freq.
To Bakersfield					From Bakersfield				
137	2:00P	4:55P	1	6	130	7:50A	11:10A	2	x7
133	2:25P	6:50P	2	x2,3,6					
To Boise					From Boise				
115	8:00A	10:09A	0	x7	114	7:20A	7:29A	0	x7
133	2:25P	4:34P	0	x2,3,6	142	1:30P	1:39P	0	x2,3,6
110	5:20P	7:25P	0	6	137	1:30P	1:39P	0	6
117	6:45P	8:50P	0	x6	116	6:10P	6:15P	0	x6
To Chico					From Chico				
137/164	2:00P	5:30P	SFO	6	131/130	6:45A	11:10A	SFO	x6,7
133/132	2:25P	8:25P	SFO	1,4	161/144	8:30A	1:39P	SFO	6
					161/142	8:30A	1:39P	SFO	7
To Fresno					From Fresno				
115/125	8:00A	2:45P	SFO	x6,7	120/130	6:20A	11:10A	SFO	x7
163/127	11:40A	5:40P	SFO	x6	122/142	8:15A	1:39P	SFO	x2,3,6,7
					144	9:05A	1:39P	3	6
To Los Angeles					From Los Angeles				
115	8:00A	12:59P	2	x7	130	7:00A	11:10A	3	x7
137	2:00P	5:45P	2	6	144	7:50A	1:39P	4	6
133	2:25P	7:40P	3	x2,3,6	142	8:30A	1:39P	3	x2,3,6
117	6:45P	11:30P	0	2,5,7	116	1:45P	6:15P	2	x6
					110	1:45P	5:00P	1	6
To Medford					From Medford				
163	11:40P	12:30P	0	D	130	10:20A	11:10A	0	D
To Palm Springs					From Palm Springs				
115	8:00A	1:55P	3	x7	116	12:40P	6:15P	3	x6
163	11:40A	3:30P	2	D	110	12:40P	5:00P	2	6
To Sacramento					From Sacramento				
133/132	2:25P	7:35P	SFO	1,4	131/130	7:35A	11:10A	SFO	x6,7
To San Francisco					From San Francisco				
115	8:00A	11:15A	1	x7	130	9:00A	11:10A	1	D
163	11:40A	1:50P	1	D	142	10:35A	1:39P	1	x2,3,6
137	2:00P	3:40P	0	6	144	10:35P	1:39P	1	6
133	2:25P	5:40P	1	x2,3,6	116	3:15P	6:15P	1	x6
117	6:45P	10:00P	1	5,7	110	3:20P	5:00P	0	6

RENO (RNO) Res. 1-800-JET-TRIP

Flight #	Leave	Arrive	Stops/ Via	Freq.	Flight #	Leave	Arrive	Stops/ Via	Freq.
To Las Vegas					Las Vegas				
173	9:00A	10:15A	0	x7	172	7:15A	8:30A	0	x7
175	12:30P	1:45P	0	7	174	10:45A	11:55A	0	7
177	6:15P	7:30P	0	D	176	4:30P	5:45P	0	D

RENO (RNO) Con't. Res. 1-800-JET-TRIP

Flight #	Leave	Arrive	Stops/ Via	Freq.	Flight #	Leave	Arrive	Stops/ Via	Freq.
To Palm Springs					From Palm Springs				
173	9:00A	11:25A	1	x7	176	3:30P	5:45P	1	D
175	12:30P	2:50P	1	7					

SACRAMENTO (SMF) Res. 916-442-0353

Flight #	Leave	Arrive	Stops/ Via	Freq.	Flight #	Leave	Arrive	Stops/ Via	Freq.
To Bakersfield					From Bakersfield				
131	7:35A	9:30A	1	x6,7	132	5:50P	7:35P	1	x5,6,7
To Boise					From Boise				
131/142	7:35A	1:10P	SFO	x6,7	137/164	1:30P	4:35P	SFO	6
122/142	9:20A	1:10P	SFO	x6,7	133/132	5:00P	7:35P	SFO	x5,6,7
161/144	9:20A	1:10P	SFO	6	133/168	5:00P	9:25P	SFO	5,7
To Chico					From Chico				
164	5:00P	5:30P	0	6	131	6:45A	7:15A	0	x6,7
132	7:55P	8:25P	0	x5,6,7	161	8:30A	9:00A	0	6,7
168	9:45P	10:15P	0	5,7					

Flight #	Leave	Arrive	Stops/ Via	Freq.	Flight #	Leave	Arrive	Stops/ Via	Freq.
To Fresno					From Fresno				
127	4:55P	5:40P	0	x6	122	8:15A	9:00A	0	x6,7
To Los Angeles					From Los Angeles				
131	7:35A	10:20A	2	x6,7	122	7:10A	9:00A	1	x6,7
127	4:55P	6:55P	1	x6	132	5:00P	7:35P	2	x5,6,7
To Palm Springs					From Palm Springs				
161	9:20A	11:30A	1	D	164	2:25P	4:35P	1	D
					132	4:00P	7:35P	3	x5,6,7
					168	7:20P	9:25P	1	5,7

Flight #	Leave	Arrive	Stops/ Via	Freq.	Flight #	Leave	Arrive	Stops/ Via	Freq.
To Portland					From Portland				
131/130	7:35A	11:10A	SFO	x6,7	133/132	2:25P	7:35P	SFO	1,4
To San Francisco					From San Francisco				
131	7:35A	8:05A	0	x6,7	127	4:05P	4:35P	0	x6
122	9:20A	9:50A	0	x6,7	132	7:05P	7:35P	0	x5,6,7
161	9:20A	9:50A	0	6,7	168	8:55P	9:25P	0	5,7

SAN FRANCISCO (SFO) Res. 415-362-0676

Flight #	Leave	Arrive	Stops/ Via	Freq.	Flight #	Leave	Arrive	Stops/ Via	Freq.
To Bakersfield					From Bakersfield				
135	8:00A	9:30A	1	6	130	7:50A	8:45A	0	x7
131	8:30A	9:30A	0	x6,7	132	5:50P	6:45P	0	D
137	4:00P	4:55P	0	6					
133	5:55P	6:50P	0	x6					
To Boise					From Boise				
142	10:35A	1:10P	0	x6	115	10:30A	11:15A	0	D
144	10:35A	1:10P	0	6	137	1:30P	3:40P	1	6
116	3:15P	5:50P	0	x6	133	5:00P	5:40P	0	x6
110	3:20P	7:25P	1	6	117	9:20P	10:00P	0	5,7
118	9:45P	11:15P	0	5,7					

Frequency code: x - Except, 1 - Monday, 2 - Tuesday, 3 - Wednesday, 4 - Thursday, 5 - Friday, 6 - Saturday, 7 - Sunday, D - Daily,

SAN FRANCISCO (SFO) Con't. Res. 415-362-0676

Flight #	Leave	Arrive	Stops/ Via	Freq.	Flight #	Leave	Arrive	Stops/ Via	Freq.
To Chico					From Chico				
164	4:05P	5:30P	1	6	131	6:45A	8:05A	1	x6,7
132	7:05P	8:25P	1	x5,6,7	161	8:30A	9:50A	1	6,7
168	8:55P	10:15P	1	5,7					
To Fresno					From Fresno				
123	7:45A	8:30A	0	D	120	6:20A	7:05A	0	x7
125	1:55P	2:45P	0	x6	122	8:15A	9:50A	1	x6,7
127	4:05P	5:40P	1	x6	144	9:05A	10:15A	1	6
129	9:55P	10:40P	0	x6	124	12:15P	12:59P	0	x6
					126	8:40P	9:25P	0	x6

Flight #	Leave	Arrive	Stops/ Via	Freq.	Flight #	Leave	Arrive	Stops/ Via	Freq.
To Los Angeles					From Los Angeles				
141	6:15A	7:59A	1	x6,7	130	7:00A	8:45A	1	x7
123	7:45A	9:45A	1	D	122	7:10A	9:50A	2	x6,7
135	8:00A	10:20A	2	6	144	7:50A	10:15A	2	6
131	8:30A	10:20A	1	x6,7	142	8:30A	10:15A	1	x6
115	11:40A	12:59P	0	D	124	11:00A	12:59P	1	x6
125	1:55P	4:00P	1	x6	116	1:45P	3:00P	0	x6
137	4:00P	5:45P	1	6	110	1:45P	3:00P	0	6
127	4:05P	6:55P	2	x6	132	5:00P	6:45P	1	D
133	5:55P	7:40P	1	x6	126	7:30P	9:25P	1	x6
117	10:15P	11:30P	0	5,7	118	8:10P	9:25P	0	5,7
					160	10:00P	11:15P	0	5,7

Flight #	Leave	Arrive	Stops/ Via	Freq.	Flight #	Leave	Arrive	Stops/ Via	Freq.
To Medford					From Medford				
130	9:00A	10:05A	0	D	163	12:45P	1:50P	0	D
To Palm Springs					From Palm Springs				
123	7:45A	10:45A	2	D	110	12:40P	3:00P	1	6
161	10:10A	11:30A	0	D	116	12:40P	3:00P	1	x6
115	11:40A	1:55P	1	D	164	2:25P	3:45P	0	D
163	2:10P	3:30P	0	D	132	4:00P	6:45P	2	D
165	7:15P	8:35P	0	5,7	170	5:40P	7:00P	0	6
					168	7:20P	8:40P	0	x6
					160	9:00P	11:15P	1	5,7

Flight #	Leave	Arrive	Stops/ Via	Freq.	Flight #	Leave	Arrive	Stops/ Via	Freq.
To Portland					From Portland				
130	9:00A	11:10A	1	D	115	8:00A	11:15A	1	x7
142	10:35A	1:39P	1	x2,3,6	163	11:40A	1:50P	1	D
144	10:35A	1:39P	1	6	137	2:00P	3:40P	0	6
116	3:15P	6:15P	1	x6	133	2:25P	5:40P	1	x2,3,6
110	3:20P	5:00P	0	6	117	6:45P	10:00P	1	5,7

Flight #	Leave	Arrive	Stops/ Via	Freq.	Flight #	Leave	Arrive	Stops/ Via	Freq.
To Sacramento					From Sacramento				
127	4:05P	4:35P	0	x6	131	7:35A	8:05A	0	x6,7
132	7:05P	7:35P	0	x5,6,7	122	9:20A	9:50A	0	x6,7
168	8:55P	9:25P	0	5,7	161	9:20A	9:50A	0	6,7

Flight #	Leave	Arrive	Stops/ Via	Freq.	Flight #	Leave	Arrive	Stops/ Via	Freq.
To Stockton					From Stockton				
141	6:15A	6:40A	0	x6,7	142	9:50A	10:15A	0	x6
135	8:00A	8:30A	0	6	144	9:50A	10:15A	0	6

Frequency code: x - Except, 1 - Monday, 2 - Tuesday, 3 - Wednesday, 4 - Thursday, 5 - Friday, 6 - Saturday, 7 - Sunday, D - Daily,

SAN JOSE (SJC) Res. 408-293-2199

Flight #	Leave	Arrive	Stops/ Via	Freq.	Flight #	Leave	Arrive	Stops/ Via	Freq.
----------	-------	--------	---------------	-------	----------	-------	--------	---------------	-------

To Oakland

162	12:55P	1:05P	0	D
166	4:55P	5:15P	0	x6

From Oakland

Call Your Travel Agent

To Palm Springs

162	12:55P	2:45P	1	D
166	4:55P	6:55P	1	x6

From Palm Springs

162	11:15A	12:35P	0	D
166	3:15P	4:35P	0	x6

STOCKTON (SCK) Res. 209-474-0256

Flight #	Leave	Arrive	Stops/ Via	Freq.	Flight #	Leave	Arrive	Stops/ Via	Freq.
----------	-------	--------	---------------	-------	----------	-------	--------	---------------	-------

To Fresno

147	5:10P	5:40P	0	6
-----	-------	-------	---	---

From Fresno

144	9:05A	9:35A	0	6
148	4:10P	4:40P	0	6

To Los Angeles

141	7:00A	7:59A	0	x6,7
135	8:50A	10:20A	1	6
147	5:10P	6:55P	1	6
145	6:50P	8:00P	0	x6

From Los Angeles

144	7:50A	9:35A	1	6
142	8:30A	9:35A	0	x6
148	3:00P	4:40P	1	6
146	5:15P	6:20P	0	x6

To Palm Springs

141/123	7:00A	10:45A	LAX	x6,7
142/115	9:50A	1:55P	SFO	x6

From Palm Springs

110/148	12:40P	4:40P	LAX	6
132/146	4:00P	6:20P	LAX	x6

To San Francisco

142	9:50A	10:15A	0	x6
144	9:50A	10:15A	0	6

From San Francisco

141	6:15	6:40A	0	x6,7
135	8:00A	8:30A	0	6

VANCOUVER (YVR) Res. 604-682-1411

Flight #	Leave	Arrive	Stops/ Via	Freq.	Flight #	Leave	Arrive	Stops/ Via	Freq.
----------	-------	--------	---------------	-------	----------	-------	--------	---------------	-------

To Palm Springs

cp130/115	8:30A	1:55P	SFO	D
-----------	-------	-------	-----	---

From Palm Springs

164/cp133	2:25P	7:35P	SFO	D
132/cp103	4:00P	9:30P	LAX	D

*Flights to and from Vancouver and Palm Springs are connecting service on C.P. Air.



"Fly the Pacific Express Way"

**MORE SERVICE TO
PALM SPRINGS...**

**...FROM FRESNO,
STOCKTON, RENO,
SAN FRANCISCO,
SAN JOSE, OAKLAND,
PORTLAND, BOISE,
MEDFORD, CHICO,
LAS VEGAS,
SACRAMENTO AND
LOS ANGELES.**

Only Pacific Express can jet you to Palm Springs from all these cities and give you more for the price.

Complimentary beverages, wine, beer and cocktails* on all flights. Complimentary Continental Breakfast on all flights departing before 9 a.m. We let you select your favorite seat. And give you loads of leg room. And extra room to store your carry-on luggage. On our jets you get flight attendants who really care. All for lower fares in the air. Pacific Express, no wonder we're taking off... the Pacific Express way.

*Beverages and Continental Breakfast included in the price of ticket (except the Midnight Express).



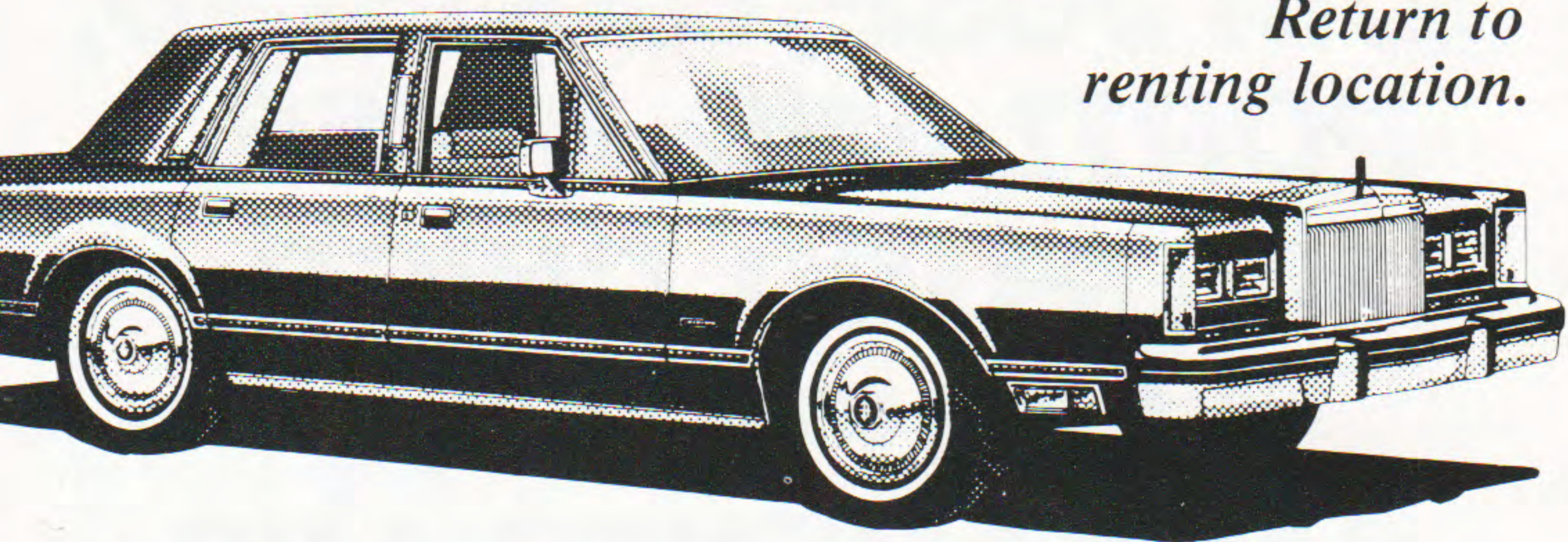
"Fly the Pacific Express Way"

WE GIVE YOU MORE...

A Lincoln for **\$29** per day!

\$29 per day weekends, \$39 per day weekdays.

Return to
renting location.



To get this super bargain, just fly Pacific Express to any of the six listed destinations, and show a copy of your flight ticket at the Budget airport counter when you rent. SFO (San Francisco), LAX (Los Angeles), PDX (Portland), SJC (San Jose), PSP (Palm Springs), OAK (Oakland). Check with Budget for conditions and rental requirements.

Partners in Travel

You are entitled to two things when you travel—the best service and honest value. We'll give you both, without fail. Budget, the world's largest discount car rental system, is famous for its Great Rates, as is Pacific Express, the new low fare, luxury airline. As for service, there just is none better. Let us prove the point—Pacific Express and Budget will add courtesy and consideration to the bargain.

Budget

rent a car



Partners in Travel

GENERAL INFORMATION

CREDIT CARDS—Pacific Express will accept American Express, Master Charge, BankAmericard/Visa, Universal Air Travel Cards, Carte Blanche, and Diner's Club.

AIRCRAFT

Pacific Express utilizes BAC 1-11 jet aircraft on flights.

SECURITY

For your security all passengers and their handcarried items must be inspected in accordance with the government-sponsored security program. Passengers should proceed through security inspection at least 30 minutes prior to departure time.

CHECK-IN

Pacific Express requests that passengers be at the Pacific Express boarding gate for check-in at least 20 minutes before scheduled departure time. Reservations of passengers presenting themselves at the Pacific Express boarding gate less than 10 MINUTES before the scheduled departure of a flight will be subject to cancellation.

BAGGAGE LIABILITY—Passenger name identification must be placed on the outside of all checked baggage. Baggage identification labels are available from Pacific Express at no cost. Liability for baggage between points in the U.S. will not exceed \$750.00 unless you declare a higher valuation and pay an extra charge. Excess valuation cannot be declared for certain checked valuable items such as jewelry, negotiable instruments, currency and antiques.

FREE BAGGAGE ALLOWANCE—(Per Passenger) 1 piece of baggage with linear dimensions (length + height + width) not exceeding 62 inches, plus 1 piece of baggage with linear dimensions not exceeding 55 inches. One or more additional pieces, totaling not more than 45 inches may be carried on board provided it fits beneath the seat; approximate dimensions not to exceed 10" x 16" x 19". In addition to size, no single piece can weigh more than 70 pounds.

EXCESS BAGGAGE—A standard fee of \$7.00 will be charged for each of the first four pieces, and \$28.00 for each additional piece. The items listed below are subject to the special charges regardless of the total baggage carried.

Bicycles—\$14.00

Scuba Gear—\$7.00

Surfboards—\$14.00

Household Pets—\$21.00

ARTICLES THAT ARE RESTRICTED IN PASSENGER BAGGAGE

Medicinal and toilet articles necessary for the passenger during the journey in quantities that do not exceed 75 ounces (net weight ounces and fluid ounces), and the capacity of each container other than an aerosol container, does not exceed 16 fluid ounces or 1 pound of material may be carried without prior approval but for safety reasons, restricted articles, such as those listed below shall not be carried in the passenger's baggage without consent of and prior arrangement with the carrier:

Compressed gases (flammable, non-flammable and poisonous); Corrosives (such as acids, alkalis and wet cell batteries); Explosives, munitions, fireworks and flares; Flammable liquids and solids (such as lighter or heating fuels, matches and articles which are easily ignited); Oxidizing materials (such as bleaching powder and peroxides); Poisons and tear gases; Radioactive materials; Other restricted articles (such as mercury, magnetized materials, offensive or irritating materials).

NO SMOKING

Sections are provided on all Pacific Express aircraft for non-smokers. Generally, the forward portion of the aircraft is reserved for non-smokers. Signs are posted in the cabin designating the no smoking sections.

DENIED BOARDING COMPENSATION

If you are denied boarding on a flight for which you have a confirmed reservation, you may be eligible for Denied Boarding Compensation. Check with a Pacific Express representative for details.

PACIFIC EXPRESS™

Pacific Express Inc.
General Offices
1103 Fortress Street
Chico CA 95926 (916) 893-6500