

PAN AM<sup>®</sup>

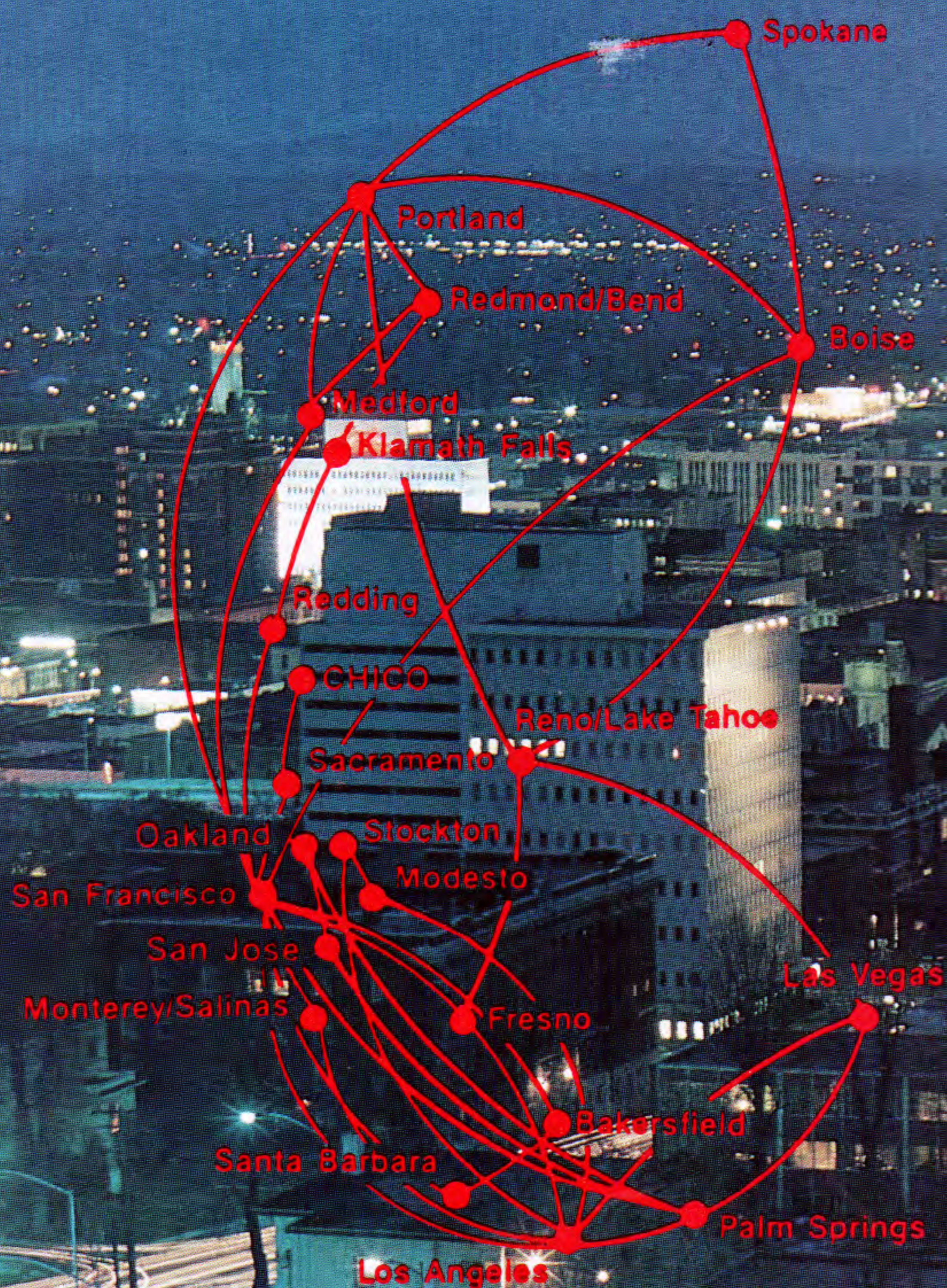
# PACIFIC EXPRESS<sup>™</sup>

System Timetable  
Effective February 1, 1984

Introducing  
PanAm/Pacific Express  
New Jet Service To  
Spokane, Washington  
New 737-200 Jets  
Join The Pacific Express Fleet



Earn Pan Am WorldPass<sup>SM</sup>  
Mileage from 22 Cities in  
the West...to the World.



PAN AM<sup>®</sup>  
**PACIFIC  
EXPRESS<sup>™</sup>**

System Timetable  
Effective February 1, 1984

PAN AM<sup>®</sup>  
**PACIFIC  
EXPRESS<sup>™</sup>**

Call Your Travel Agent

Introducing  
PanAm/Pacific Express  
New Jet Service To  
Spokane, Washington  
New 737-200 Jets  
Join The Pacific Express Fleet



# Introducing Pan Am/Pacific to the world.



The Pan Am/Pacific Express is operated by Pacific Express to provide connecting service between four western states and Pan Am's Los Angeles and San Francisco gateways to the world. With one ticket, one check-in, all seat assignments for connecting flights and one baggage check-in. One call to either Pacific Express or Pan Am does it all.

**Making a connection** at Los Angeles or San Francisco is quick and simple. Your baggage is automatically transferred to your outbound flight, so all you need do is proceed to the appropriate departure gate.

**On your Pan Am international flight**, you'll experience the luxury of a Pan Am 747 or L-1011 Clipper®—the world's most preferred aircraft. With your choice of service: First Class Sleeperette® Service—gracious and luxurious, Clipper® Class—our separate section business class, and Cabin Class<sup>SM</sup>—superior service at our most affordable fares.

**Pan Am WorldPass<sup>SM</sup> members** earn big rewards when they fly The Pan Am/Pacific Express with mileage credits for every flight. And additional credits at participating hotels and car rental locations. When you fly First Class you earn a bonus of 50% more than the actual mileage flown. Clipper Class travel earns an extra 25%.

# Express

With convenient connections to Pan Am's U.S. cities. To Europe, Africa, Asia, The Middle East, The Orient, The South Pacific and Latin America.

Pan Am FT WorldPass			
Name _____			
WorldPass Number _____		Flight Number _____	
Month / Day	Fare Paid F C Y	From PA Departure City	To PA Destination City
<input type="checkbox"/> Change of Address.		<input type="checkbox"/> Please send me more WorldPass coupons.	

Each 10,000 mile credit earns an upgrade in service or free travel. Our ultimate reward: 30 days unlimited First Class travel for two. Anywhere in the world Pan Am flies.\* For details, call 1-800-348-8000.

\*For specific flight information and reservations call your Travel Agent, Corporate Travel Department or your Pan Am/Pacific Express Office.

<b>In California call:</b>		<b>In Idaho call:</b> 800-227-4840
Sacramento	441-7212	<b>In Nevada call:</b> 800-421-2707
San Jose	244-9411	
All other cities,		<b>In Oregon call:</b>
Northern California	800-792-0740	Portland 227-6671
Southern California	800-262-1801	All other cities 800-227-4840



The Pan Am/Pacific Express is operated by Pacific Express.



# EXPRESS FARE SUMMARY

Effective February 1, 1984

All fares are one-way or round-trip and include 8% Transportation Tax. All fares and schedules are subject to change without notice.

City Pair	K*	BE7**	V***
<b>Bakersfield</b> —Boise	163.	269.	127.
—Chico	132.	218.	92.
—Fresno	62.	102.	43.
—Klamath Falls	154.	255.	108.
—Monterey/Salinas	100.	165.	70.
—Portland	160.	264.	121.
—Redding	131.	216.	92.
—Redmond/Bend	154.	255.	108.
—Sacramento	96.	158.	75.
—Santa Barbara	58.	96.	29.
<b>Boise</b> —Chico	158.	260.	110.
—Fresno	149.	246.	109.
—Klamath Falls	158.	260.	110.
—Las Vegas	158.	260.	79.
—Los Angeles	154.	254.	124.
—Medford	139.	229.	97.
—Monterey/Salinas	139.	229.	119.
—Palm Springs	169.	279.	119.
—Portland	95.	157.	80.
—Redding	153.	253.	107.
—Redmond/Bend	147.	243.	103.
—Reno/Lake Tahoe	99.	163.	79.
—Sacramento	125.	206.	100.
—San Francisco	134.	221.	109.
—Santa Barbara	182.	299.	127.
—Spokane	89.	147.	79.
<b>Chico</b> —Los Angeles	119.	196.	99.
—Medford	143.	235.	100.
—Palm Springs	120.	197.	84.
—Portland	149.	246.	104.
—Redmond/Bend	109.	181.	77.
—Sacramento	54.	88.	27.
—San Francisco	75.	124.	55.
—Santa Barbara	132.	218.	92.
<b>Fresno</b> —Klamath Falls	139.	229.	97.
—Las Vegas	85.	140.	70.
—Los Angeles	60.	99.	50.
—Monterey/Salinas	87.	144.	61.
—Palm Springs	95.	157.	75.
—Redding	105.	173.	75.
—Redmond/Bend	142.	234.	100.
—Reno/Lake Tahoe	75.	124.	38.
—Sacramento	69.	114.	49.
—San Francisco	60.	99.	44.
—Spokane	177.	293.	135.
<b>Klamath Falls</b> —Los Angeles	140.	231.	119.
—Monterey/Salinas	130.	215.	91.
—Palm Springs	152.	251.	107.
—Portland	92.	152.	82.
—Redding	58.	96.	29.
—Redmond/Bend	58.	96.	29.
—Reno/Lake Tahoe	140.	230.	98.
—Sacramento	130.	215.	91.
—San Francisco	104.	171.	83.
—Santa Barbara	147.	243.	103.
<b>Las Vegas</b> —Los Angeles	60.	99.	30.
—Medford	162.	267.	113.
—Monterey/Salinas	115.	191.	81.
—Palm Springs	85.	140.	43.
—Portland	142.	234.	109.
—Redmond/Bend	162.	267.	113.
—Reno/Lake Tahoe	84.	139.	65.
—San Francisco	85.	141.	60.
—Spokane	189.	312.	149.

City Pair	K*	BE7**	V***
<b>Los Angeles</b> —Modesto	89.	147.	69.
—Monterey/Salinas	91.	150.	71.
—Palm Springs	60.	99.	30.
—Portland	150.	248.	109.
—Redding	135.	223.	99.
—Redmond/Bend	149.	246.	119.
—Reno/Lake Tahoe	89.	147.	69.
—Sacramento	89.	147.	69.
—San Francisco	84.	139.	42.
—Spokane	175.	289.	135.
—Stockton	89.	147.	69.
<b>Medford</b> —Palm Springs	173.	286.	125.
—Portland	79.	130.	40.
—Redmond/Bend	58.	96.	41.
—Sacramento	109.	181.	77.
—San Francisco	99.	163.	50.
<b>Modesto</b> —Stockton	34.	56.	23.
<b>Monterey/Salinas</b> —Palm Springs	100.	165.	70.
—Portland	145.	239.	115.
—Redding	99.	163.	69.
—Redmond/Bend	120.	197.	84.
—Sacramento	52.	86.	42.
—San Francisco	49.	81.	25.
—Santa Barbara	87.	144.	61.
—Spokane	167.	275.	114.
<b>Oakland</b> —Palm Springs	95.	157.	75.
—San Jose	33.	54.	23.
<b>Palm Springs</b> —Portland	165.	272.	125.
—Redding	143.	235.	100.
—Redmond/Bend	160.	264.	111.
—Reno/Lake Tahoe	131.	216.	92.
—Sacramento	115.	190.	95.
—San Francisco	95.	157.	75.
—San Jose	89.	147.	69.
—Spokane	199.	328.	159.
<b>Portland</b> —Redding	109.	180.	89.
—Redmond/Bend	79.	130.	69.
—Reno/Lake Tahoe	109.	180.	89.
—Sacramento	150.	248.	130.
—San Francisco	119.	196.	89.
—Santa Barbara	153.	253.	121.
—Spokane	89.	147.	69.
—Stockton	143.	235.	100.
<b>Redding</b> —Redmond/Bend	76.	125.	52.
—San Francisco	85.	140.	65.
—Santa Barbara	129.	213.	109.
—Spokane	179.	296.	149.
<b>Redmond/Bend</b> —Reno/Lake Tahoe	153.	253.	107.
—Sacramento	109.	181.	77.
—San Francisco	109.	180.	89.
—Santa Barbara	153.	253.	107.
—Spokane	126.	208.	88.
—Stockton	109.	181.	77.
<b>Reno/Lake Tahoe</b> —Spokane	149.	246.	119.
<b>Sacramento</b> —San Francisco	39.	65.	29.
—Santa Barbara	101.	166.	79.
—Spokane	177.	292.	124.
<b>San Francisco</b> —Santa Barbara	91.	150.	71.
—Spokane	159.	262.	119.
<b>Santa Barbara</b> —Spokane	177.	293.	127.

\* K=Economy Fare.

\*\* BE7=Economy Round-Trip Excursion Fare. Seven day advance purchase required, fully refundable.

\*\*\*V=Economy One-Way Fare. Fully refundable. Seats are limited.

Children's Fare is 50% of K Fare



# RESERVATIONS AND PACIFIC EXPRESS PAC™ INFORMATION

Please call your Travel Agent or Pacific Express Reservations.

Anaheim	714-761-9110
Bakersfield	805-325-4935
Boise	208-342-3542
Chico	916-893-4929
Fresno	209-432-8600
Glendale	213-507-7665
Inglewood	213-671-4038
Klamath Falls	503-884-0141
Las Vegas	702-382-0221
Los Angeles	213-485-0294
Medford	503-773-1475
Modesto	209-523-9099
Monterey	408-372-4111
Oakland	415-836-6176
Palm Springs	619-320-7921
Portland	503-226-0194
Redding	916-221-1890
Redmond/Bend	503-923-2233
Reno	702-322-3801
Sacramento	916-442-0353
San Francisco	415-362-0676
San Jose	408-293-2199
Santa Barbara	805-964-3561
Santa Rosa	707-585-3771
Spokane	1-800-JET-TRIP
Stockton	209-474-0256
Vancouver, B.C.	604-682-1411
Van Nuys	213-994-6501
Ventura	805-653-6155

Anywhere in U.S. including California 1-800-JET-TRIP (1-800-538-8747)



## BAKERSFIELD (BFL)

Res. 805-325-4935

Flight #	Leave	Arrive	Stops/ Via	Freq.	Flight #	Leave	Arrive	Stops/ Via	Freq.
<b>To Boise</b>					<b>From Boise</b>				
902/852	9:10A	2:30P	SFO	6,7	853/877	2:45P	6:30P	SFO	6,7
906	12:55P	5:55P	2	x6,7					
<b>To Chico</b>					<b>From Chico</b>				
884	6:45P	9:30P	2	6,7	869	6:15A	8:55A	2	D
904	7:30P	10:00P	2	x6,7					
<b>To Fresno</b>					<b>From Fresno</b>				
902/921	9:10A	12:25P	SFO	x7	910/905	8:50A	12:30P	SFO	x6,7
906/917	12:55P	4:50P	SFO	x6,7	914/877	3:25P	6:30P	SFO	6
<b>To Klamath Falls</b>					<b>From Klamath Falls</b>				
902/920	9:10A	2:05P	SFO	D	881/869	5:50A	8:55A	SFO	x7
884/850	6:45P	10:00P	SFO	7					
<b>To Monterey/Salinas</b>					<b>From Monterey/Salinas</b>				
902/877	9:10A	2:00P	SFO	x6,7	Call Your Travel Agent				
<b>To Portland</b>					<b>From Portland</b>				
902/920	9:10A	3:55P	SFO	D	Call Your Travel Agent				
906	12:55P	6:25P	3	x6,7					
<b>To Redding</b>					<b>From Redding</b>				
902/920	9:10A	1:15P	SFO	D	881/869	6:40A	8:55A	SFO	D
884/848	6:45P	10:05P	SFO	6					
884/850	6:45P	9:15P	SFO	7					
<b>To Redmond/Bend</b>					<b>From Redmond/Bend</b>				
902/920	9:10A	3:00P	SFO	D	Call Your Travel Agent				
<b>To Sacramento</b>					<b>From Sacramento</b>				
902	9:10A	11:55A	2	7	869	7:00A	8:55A	1	D
902/880	9:10A	12:15P	SFO	x6,7					
884	6:45P	8:50P	1	6,7					
904	7:30P	9:20P	1	x6,7					
<b>To San Francisco</b>					<b>From San Francisco</b>				
902	9:10A	11:00A	1	D	869	7:55A	8:55A	0	D
906	12:55P	2:50P	1	x6,7	905	11:25A	12:30P	0	x6,7
884	6:45P	7:45P	0	6,7	877	4:45P	6:30P	1	6,7
904	7:30P	8:30P	0	x6,7	903	5:30P	7:15P	1	x6,7
<b>To Santa Barbara</b>					<b>From Santa Barbara</b>				
902	9:10A	9:40A	0	D	884	6:00P	6:30P	0	6,7
906	12:55P	1:25P	0	x6,7	904	6:45P	7:15P	0	x6,7
<b>To Spokane</b>					<b>From Spokane</b>				
906	12:55P	7:45P	4	x6,7	Call Your Travel Agent				

## BOISE (BOI)

Res. 208-342-3542

Flight #	Leave	Arrive	Stops/ Via	Freq.	Flight #	Leave	Arrive	Stops/ Via	Freq.
<b>To Bakersfield</b>					<b>From Bakersfield</b>				
853/877	2:45P	6:30P	SFO	6,7	902/852	9:10A	2:30P	SFO	6,7
					906	12:55P	5:55P	2	x6,7
<b>To Chico</b>					<b>From Chico</b>				
Call Your Travel Agent					869/860	6:15A	1:45P	SFO	x6,7

Frequency code: x—Except, 1—Monday, 2—Tuesday, 3—Wednesday, 4—Thursday  
5—Friday, 6—Saturday, 7—Sunday, D—Daily



**BOISE (BOI) (Cont'd)**

Res. 208-342-3542

Flight #	Leave	Arrive	Stops/ Via	Freq.	Flight #	Leave	Arrive	Stops/ Via	Freq.
<b>To Fresno</b>					<b>From Fresno</b>				
921	10:35A	12:25P	1	x7	910/852	8:50A	2:30P	SFO	7
853/917	2:45P	4:50P	SFO	6	888	1:45P	5:00P	1	6,7
					912	3:10P	6:20P	1	x6,7
<b>To Klamath Falls</b>					<b>From Klamath Falls</b>				
847/919	2:15P	5:50P	PDX	x6,7	Call Your Travel Agent				
<b>To Las Vegas</b>					<b>From Las Vegas</b>				
875	11:50A	1:30P	1	D	856/852	7:00A	2:30P	SFO	6
847	2:15P	6:00P	2	x6,7	874/912	2:00P	6:20P	RNO	x6,7
					874/915	2:00P	9:20P	PDX	7
<b>To Los Angeles</b>					<b>From Los Angeles</b>				
921	10:35A	1:35P	2	x7	852	9:35A	2:30P	2	6,7
853	2:45P	5:45P	2	6,7	888	12:30P	5:00P	2	6,7
					912	2:00P	6:20P	2	x6,7
					854	3:30P	8:20P	2	7
<b>To Medford</b>					<b>From Medford</b>				
847/867	2:15P	6:20P	PDX	x6,7	860	10:25A	1:45P	1	x6,7
<b>To Monterey/Salinas</b>					<b>From Monterey/Salinas</b>				
921/877	10:35A	2:00P	SFO	x6,7	852	10:50A	2:30P	1	6,7
853	2:45P	4:15P	1	6,7	854	4:50P	8:20P	1	7
<b>To Palm Springs</b>					<b>From Palm Springs</b>				
921/865	10:35A	1:30P	SFO	x7	860	7:00A	1:45P	3	x6,7
847/867	2:15P	9:25P	PDX	x5,6,7	888	11:35A	5:00P	3	6,7
					890/854	2:45P	8:20P	SFO	7
<b>To Portland</b>					<b>From Portland</b>				
922	7:25A	7:40A	0	x7	921	8:15A	10:20A	0	x7
847	2:15P	2:30P	0	x6,7	860	11:35A	1:45P	0	x6,7
906	6:10P	6:25P	0	x6,7	915	7:10P	9:20P	0	7
854	8:35P	8:45P	0	7	883	8:20P	10:30P	0	x6,7
<b>To Redding</b>					<b>From Redding</b>				
921/920	10:35A	1:15P	SFO	x7	881/860	6:40A	1:45P	SFO	x6,7
847/919	2:15P	6:40P	PDX	x6,7					
<b>To Redmond/Bend</b>					<b>From Redmond/Bend</b>				
847/919	2:15P	4:55P	PDX	x6,7	Call Your Travel Agent				
<b>To Reno/Lake Tahoe</b>					<b>From Reno/Lake Tahoe</b>				
875	11:50A	12:00P	0	D	888	2:50P	5:00P	0	6,7
847	2:15P	4:30P	1	x6,7	912	4:10P	6:20P	0	x6,7
<b>To Sacramento</b>					<b>From Sacramento</b>				
921/880	10:35A	12:15P	SFO	x6,7	869/860	7:00A	1:45P	SFO	x6,7
					877/906	12:35P	5:55P	SFO	x6,7
<b>To San Francisco</b>					<b>From San Francisco</b>				
921	10:35A	11:15A	0	x7	860	9:00A	1:45P	2	x6,7
847/867	2:15P	7:45P	PDX	x6,7	852	11:45A	2:30P	0	6,7
853	2:45P	3:15P	0	6,7	906	3:20P	5:55P	0	x6,7
					854	5:45P	8:20P	0	7
<b>To Santa Barbara</b>					<b>From Santa Barbara</b>				
853/877	2:45P	5:45P	SFO	6,7	902/852	9:55A	2:30P	SFO	6,7
					906	1:45P	5:55P	1	x6,7

**BOISE (BOI) (Cont'd)**

Res. 208-342-3542

Flight #	Leave	Arrive	Stops/ Via	Freq.	Flight #	Leave	Arrive	Stops/ Via	Freq.
<b>To Spokane</b>					<b>From Spokane</b>				
922	7:25A	9:00A	1	x7	921	6:55A	10:20A	1	x7
888	5:15P	5:15P	0	6,7	875	9:30A	11:30A	0	D
906	6:10P	7:45P	1	x6,7	915	5:45P	9:20P	1	7
912	6:35P	6:35P	0	x6,7	883	7:00P	10:30P	1	x6,7
854	8:35P	10:05P	1	7					

**CHICO (CIC)**

Res. 916-893-4929

Flight #	Leave	Arrive	Stops/ Via	Freq.	Flight #	Leave	Arrive	Stops/ Via	Freq.
<b>To Bakersfield</b>					<b>From Bakersfield</b>				
869	6:15A	8:55A	2	D	884	6:45P	9:30P	2	6,7
					904	7:30P	10:00P	2	x6,7
<b>To Boise</b>					<b>From Boise</b>				
869/860	6:15A	1:45P	SFO	x6,7	Call Your Travel Agent				
<b>To Fresno</b>					<b>From Fresno</b>				
Call Your Travel Agent					918/904	7:45P	10:00P	SFO	x6,7
<b>To Los Angeles</b>					<b>From Los Angeles</b>				
869/881	6:15A	8:59A	SFO	D	854/884	3:30P	9:30P	SFO	6,7
					918/904	6:30P	10:00P	SFO	x6,7
<b>To Medford</b>					<b>From Medford</b>				
869/860	6:15A	10:10A	SFO	x6	867/904	6:35P	10:00P	SFO	x6,7
869/870	6:15A	9:25A	SFO	6					
<b>To Palm Springs</b>					<b>From Palm Springs</b>				
869/863	6:15A	11:15A	SFO	x7	858/884	6:10P	9:30P	SFO	7
869/879	6:15A	11:15A	SFO	7					
<b>To Portland</b>					<b>From Portland</b>				
869/860	6:15A	11:15A	SFO	x6	919/884	4:15P	9:30P	SFO	7
869/870	6:15A	11:15A	SFO	6	919/904	4:15P	10:00P	SFO	x6,7
					867/904	5:30P	10:00P	SFO	x6,7
<b>To Redmond/Bend</b>					<b>From Redmond/Bend</b>				
869/870	6:15A	10:20A	SFO	6	919/884	5:10P	9:30P	SFO	6
<b>To Sacramento</b>					<b>From Sacramento</b>				
869	6:15A	6:40A	0	D	884	9:05P	9:30P	0	6,7
					904	9:35P	10:00P	0	x6,7
<b>To San Francisco</b>					<b>From San Francisco</b>				
869	6:15A	7:35A	1	D	884	8:15P	9:30P	1	6,7
					904	8:45P	10:00P	1	x6,7
<b>To Santa Barbara</b>					<b>From Santa Barbara</b>				
869	6:15A	9:40A	3	D	884	6:00P	9:30P	3	6,7
					904	6:45P	10:00P	3	x6,7

**FRESNO (FAT)**

Res. 209-432-8600

Flight #	Leave	Arrive	Stops/ Via	Freq.	Flight #	Leave	Arrive	Stops/ Via	Freq.
<b>To Bakersfield</b>					<b>From Bakersfield</b>				
910/905	8:50A	12:30P	SFO	x6,7	902/921	9:10A	12:25P	SFO	x7
914/877	3:25P	6:30P	SFO	6	906/917	12:55P	4:50P	SFO	x6,7

Frequency code: x—Except, 1—Monday, 2—Tuesday, 3—Wednesday, 4—Thursday  
5—Friday, 6—Saturday, 7—Sunday, D—Daily



**FRESNO (FAT) (Cont'd)****Res. 209-432-8600**

Flight #	Leave	Arrive	Stops/ Via	Freq.	Flight #	Leave	Arrive	Stops/ Via	Freq.
<b>To Boise</b>					<b>From Boise</b>				
910/852	8:50A	2:30P	SFO	7	921	10:35A	12:25P	1	x7
888	1:45P	5:00P	1	6,7	853/917	2:45P	4:50P	SFO	6
912	3:10P	6:20P	1	x6,7					
<b>To Klamath Falls</b>					<b>From Klamath Falls</b>				
916/920	11:00A	2:05P	SFO	x7	881/916	5:50A	10:45A	LAX	x7
<b>To Las Vegas</b>					<b>From Las Vegas</b>				
912/847	3:10P	6:00P	RNO	x6,7	856/916	7:00A	10:45A	LAX	6
917/908	5:10P	9:15P	LAX	1,2	856/921	7:00A	12:25P	SFO	6
917/926	5:10P	10:25P	LAX	5	874/859	2:00P	5:55P	RNO	6
					876/878	6:25P	8:45P	RNO	x6
					857/924	6:45P	10:25P	LAX	1,2
<b>To Los Angeles</b>					<b>From Los Angeles</b>				
907	6:15A	7:10A	0	x6,7	910	7:40A	8:35A	0	x6
909	8:30A	9:25A	0	D	916	9:50A	10:45A	0	x7
923	12:25P	1:20P	0	7	888	12:30P	1:25P	0	6,7
921	12:40P	1:35P	0	x7	912	2:00P	2:55P	0	x6,7
917	5:10P	6:05P	0	x7	914	2:15P	3:10P	0	6
859	6:15P	7:10P	0	6	918	6:30P	7:25P	0	x7
878	9:00P	9:55P	0	x6	924	9:30P	10:25P	0	x5,6
<b>To Monterey/Salinas</b>					<b>From Monterey/Salinas</b>				
907/880	6:15A	10:35A	LAX	x6,7	877/918	2:15P	7:25P	LAX	x6,7
916/877	11:00A	2:00P	SFO	x6,7	853/918	4:45P	7:25P	LAX	x7
<b>To Palm Springs</b>					<b>From Palm Springs</b>				
909	8:30A	10:30A	1	7	860/921	7:00A	12:25P	SFO	x6,7
916/865	11:00A	1:30P	SFO	x7	888	11:35P	1:25P	1	6,7
923	12:25P	2:25P	1	7	864/917	1:50P	4:50P	SFO	x7
<b>To Portland</b>					<b>From Portland</b>				
910/920	8:50A	3:55P	SFO	x6	921	8:15A	12:25P	2	x7
916/920	11:00A	3:55P	SFO	x7	859	3:25P	5:55P	1	6
888/874	1:45P	5:00P	RNO	6,7					
<b>To Redding</b>					<b>From Redding</b>				
910/920	8:50A	1:15P	SFO	x6	881/916	6:40A	10:45A	LAX	x7
916/920	11:00A	1:15P	SFO	x7					
<b>To Redmond/Bend</b>					<b>From Redmond/Bend</b>				
910/920	8:50A	3:00P	SFO	x6	Call Your Travel Agent				
916/920	11:00A	3:00P	SFO	x7					
<b>To Reno/Lake Tahoe</b>					<b>From Reno/Lake Tahoe</b>				
888	1:45P	2:30P	0	6,7	859	5:10P	5:55P	0	6
912	3:10P	3:55P	0	x6,7	878	8:00P	8:45P	0	x6
<b>To Sacramento</b>					<b>From Sacramento</b>				
910/880	8:50A	12:15P	SFO	x6,7	877/917	12:35P	4:50P	SFO	x6,7
918/904	7:45P	9:20P	SFO	x6,7					
<b>To San Francisco</b>					<b>From San Francisco</b>				
910	8:50A	9:35A	0	x6	909	7:15A	8:05A	0	D
916	11:00A	11:45A	0	x7	923	11:20A	12:05P	0	7
914	3:25P	4:15P	0	6	921	11:35A	12:25P	0	x7
918	7:45P	8:30P	0	x7	917	4:00P	4:50P	0	x7
<b>To Spokane</b>					<b>From Spokane</b>				
888	1:45P	5:15P	2	6,7	921	6:55A	12:25P	3	x7
912	3:10P	6:35P	2	x6,7					

**KLAMATH FALLS (LMT)****Res. 503-884-0141**

Flight #	Leave	Arrive	Stops/ Via	Freq.	Flight #	Leave	Arrive	Stops/ Via	Freq.
<b>To Bakersfield</b>					<b>From Bakersfield</b>				
881/869	5:50A	8:55A	SFO	x7	902/920	9:10A	2:05P	SFO	D
					884/850	6:45P	10:00P	SFO	7
<b>To Boise</b>					<b>From Boise</b>				
Call Your Travel Agent					847/919	2:15P	5:50P	PDX	x6,7
<b>To Fresno</b>					<b>From Fresno</b>				
881/916	5:50A	10:45A	LAX	x7	916/920	11:00A	2:05P	SFO	x7
<b>To Los Angeles</b>					<b>From Los Angeles</b>				
881	5:50A	8:59A	2	x7	920	10:45A	2:05P	2	D
919	6:05P	9:30P	2	6	854/850	3:30P	10:00P	SFO	7
<b>To Monterey/Salinas</b>					<b>From Monterey/Salinas</b>				
881/852	5:50A	10:35A	LAX	6	852/920	10:50A	2:05P	SFO	6,7
881/880	5:50A	10:35A	LAX	x6,7	880/920	10:50A	2:05P	SFO	x6,7
<b>To Palm Springs</b>					<b>From Palm Springs</b>				
881/863	5:50A	11:15A	SFO	x7	868/850	3:40P	10:00P	SFO	x6,7
919/867	6:05P	9:25P	SFO	x5,6,7	858/850	6:10P	10:00P	SFO	7
919/885	6:05P	9:50P	SFO	6,7					
<b>To Portland</b>					<b>From Portland</b>				
920	2:20P	3:55P	1	D	919	4:15P	5:50P	1	D
<b>To Redding</b>					<b>From Redding</b>				
881	5:50A	6:25A	0	x7	920	1:30P	2:05P	0	D
919	6:05P	6:40P	0	D	850	9:30P	10:00P	0	x6
<b>To Redmond/Bend</b>					<b>From Redmond/Bend</b>				
920	2:20P	3:00P	0	D	919	5:10P	5:50P	0	D
<b>To Reno/Lake Tahoe</b>					<b>From Reno/Lake Tahoe</b>				
Call Your Travel Agent					952/919	1:15P	5:50P	PDX	6,7
<b>To Sacramento</b>					<b>From Sacramento</b>				
919/884	6:05P	8:50P	SFO	7	Call Your Travel Agent				
919/904	6:05P	9:20P	SFO	x6,7					
<b>To San Francisco</b>					<b>From San Francisco</b>				
881	5:50A	7:30A	1	x7	920	12:25P	2:05P	1	D
919	6:05P	7:50P	1	D	850	8:25P	10:00P	1	x6
<b>To Santa Barbara</b>					<b>From Santa Barbara</b>				
881/869	5:50A	9:40A	SFO	x7	902/920	9:55A	2:05P	SFO	D
					884/850	6:00P	10:00P	SFO	7

**LAS VEGAS (LAS)****Res. 702-382-0221**

Flight #	Leave	Arrive	Stops/ Via	Freq.	Flight #	Leave	Arrive	Stops/ Via	Freq.
<b>To Boise</b>					<b>From Boise</b>				
856/852	7:00A	2:30P	SFO	6	875	11:50A	1:30P	1	D
874/883	2:00P	10:30P	PDX	x6,7	847	2:15P	6:00P	2	x6,7
874/915	2:00P	9:20P	PDX	7					

Frequency code: x—Except, 1—Monday, 2—Tuesday, 3—Wednesday, 4—Thursday  
5—Friday, 6—Saturday, 7—Sunday, D—Daily



**LAS VEGAS (LAS) (Cont'd)**

**Res. 702-382-0221**

Flight #	Leave	Arrive	Stops/ Via	Freq.	Flight #	Leave	Arrive	Stops/ Via	Freq.
<b>To Fresno</b>					<b>From Fresno</b>				
874/859	2:00P	5:55P	RNO	6	888/847	1:45P	6:00P	RNO	7
876/878	6:25P	8:45P	RNO	x6	912/847	3:10P	6:00P	RNO	x6,7
857/924	6:45P	10:25P	LAX	1,2	917/908	5:10P	9:15P	LAX	1,2
					917/926	5:10P	10:25P	LAX	5
<b>To Los Angeles</b>					<b>From Los Angeles</b>				
856	7:00A	8:00A	0	6	908	8:15P	9:15P	0	1,2
857	6:45P	7:45P	0	1,2	926	9:25P	10:25P	0	5,7
844	9:15P	10:25P	0	5,7					
<b>To Medford</b>					<b>From Medford</b>				
874/867	2:00P	6:20P	PDX	x6,7	860/847	10:25A	6:00P	BOI	x6,7
<b>To Modesto</b>					<b>From Modesto</b>				
Call Your Travel Agent					845/926	8:05P	10:25P	LAX	5,7
<b>To Monterey/Salinas</b>					<b>From Monterey/Salinas</b>				
856/852	7:00A	10:35A	LAX	6	853/908	4:45P	9:15P	LAX	1,2
<b>To Oakland</b>					<b>From Oakland</b>				
Call Your Travel Agent					871	1:30P	3:50P	1	6
<b>To Palm Springs</b>					<b>From Palm Springs</b>				
Call Your Travel Agent					871	3:05P	3:50P	0	6
<b>To Portland</b>					<b>From Portland</b>				
874	2:00P	5:00P	1	D	847	3:00P	6:00P	1	x6
<b>To Redmond/Bend</b>					<b>From Redmond/Bend</b>				
874/885	2:00P	6:00P	PDX	6,7	Call Your Travel Agent				
<b>To Reno/Lake Tahoe</b>					<b>From Reno/Lake Tahoe</b>				
872	7:00A	8:10A	0	x6,7	873	8:35A	9:45A	0	x6,7
874	2:00P	3:15P	0	D	875	12:15P	1:30P	0	D
876	6:25P	7:40P	0	x6	847	4:45P	6:00P	0	x6
<b>To San Francisco</b>					<b>From San Francisco</b>				
856	7:00A	9:35A	1	6	917/926	4:00P	10:25P	LAX	5
884	9:15P	11:50P	1	5,7	961/926	7:50P	10:25P	LAX	7
<b>To San Jose</b>					<b>From San Jose</b>				
Call Your Travel Agent					871	12:50P	3:50P	2	6
<b>To Spokane</b>					<b>From Spokane</b>				
874/912	2:00P	6:35P	RNO	x6,7	875	9:30A	1:30P	2	D

**LOS ANGELES (LAX)**

**Res. 213-485-0294**

Flight #	Leave	Arrive	Stops/ Via	Freq.	Flight #	Leave	Arrive	Stops/ Via	Freq.
<b>To Boise</b>					<b>From Boise</b>				
852	9:35A	2:30P	2	6,7	921	10:35A	1:35P	2	x7
888	12:30P	5:00P	2	6,7	853	2:45P	5:45P	2	6,7
912	2:00P	6:20P	2	x6,7					
854	3:30P	8:20P	2	7					
<b>To Chico</b>					<b>From Chico</b>				
854/884	3:30P	9:30P	SFO	6,7	869/881	6:15A	8:59A	SFO	D
918/904	6:30P	10:00P	SFO	x6,7					

**LOS ANGELES (LAX) (Cont'd)**

**Res. 213-485-0294**

Flight #	Leave	Arrive	Stops/ Via	Freq.	Flight #	Leave	Arrive	Stops/ Via	Freq.
<b>To Fresno</b>					<b>From Fresno</b>				
910	7:40A	8:35A	0	x6	907	6:15A	7:10A	0	x6,7
916	9:50A	10:45A	0	x7	909	8:30A	9:25A	0	D
888	12:30P	1:25P	0	6,7	923	12:25P	1:20P	0	7
912	2:00P	2:55P	0	x6,7	921	12:40P	1:35P	0	x7
914	2:15P	3:10P	0	6	917	5:10P	6:05P	0	x7
918	6:30P	7:25P	0	x7	859	6:15P	7:10P	0	6
924	9:30P	10:25P	0	x5,6	878	9:00P	9:55P	0	x6
<b>To Klamath Falls</b>					<b>From Klamath Falls</b>				
920	10:45A	2:05P	2	D	881	5:50A	8:59A	2	x7
854/850	3:30P	10:00P	SFO	7	919	6:05P	9:30P	2	6
<b>To Las Vegas</b>					<b>From Las Vegas</b>				
908	8:15P	9:15P	0	1,2	856	7:00A	8:00A	0	6
926	9:25P	10:25P	0	5,7	857	6:45P	7:45P	0	1,2
					844	9:15P	10:15P	0	5,7
<b>To Modesto</b>					<b>From Modesto</b>				
842	7:00A	8:10A	0	D	843	8:25A	10:05A	1	D
846	6:10P	7:50P	1	D	845	8:05P	9:00P	0	D
<b>To Monterey/Salinas</b>					<b>From Monterey/Salinas</b>				
852	9:35A	10:35A	0	6,7	851	2:00P	3:00P	0	6,7
880	9:35A	10:35A	0	x6,7	877	2:15P	3:10P	0	x6,7
854	3:30P	4:30P	0	D	853	4:45P	5:45P	0	D
<b>To Palm Springs</b>					<b>From Palm Springs</b>				
909	9:45A	10:30A	0	7	888	11:35A	12:15P	0	6,7
923	1:40P	2:25P	0	7					
<b>To Portland</b>					<b>From Portland</b>				
920	10:45A	3:55P	4	D	921	8:15A	1:35P	3	x7
854	3:30P	8:45P	3	7	859	3:25P	7:10P	2	6
					919	4:15P	9:30P	4	6
<b>To Redding</b>					<b>From Redding</b>				
920	10:45A	1:15P	1	D	881	6:40A	8:59A	1	D
854/850	3:30P	9:15P	SFO	7	919	7:00P	9:30P	1	6
848	7:40P	10:05P	1	6					
<b>To Redmond/Bend</b>					<b>From Redmond/Bend</b>				
920	10:45A	3:00P	3	D	919	5:10P	9:30P	3	6
<b>To Reno/Lake Tahoe</b>					<b>From Reno/Lake Tahoe</b>				
888	12:30P	2:30P	1	6,7	859	5:10P	7:10P	1	6
912	2:00P	3:55P	1	x6,7	878	8:00P	9:55P	1	x6
<b>To Sacramento</b>					<b>From Sacramento</b>				
910/902	7:40A	11:55A	SFO	7	869/881	7:00A	8:59A	SFO	D
880	9:35A	12:15P	SFO	x6,7	851	12:15P	3:00P	2	7
854/884	3:30P	8:50P	SFO	6,7	877	12:35P	3:10P	2	x6,7
918/904	6:30P	9:20P	SFO	x6,7					
<b>To San Francisco</b>					<b>From San Francisco</b>				
910	7:40A	9:35A	1	x6	909	7:15A	9:25A	1	D
856	8:20A	9:35A	0	6	881	7:50A	8:59A	0	D
852	9:35A	11:25A	1	6,7	923	11:20A	1:20P	1	7
880	9:35A	11:25A	1	x6,7	921	11:35A	1:35P	1	x7
916	9:50A	11:45A	1	x7	851	1:15P	3:00P	1	6,7
920	10:45A	12:05P	0	D	877	1:30P	3:10P	1	x6,7
914	2:15P	4:15P	1	6	853	3:40P	5:45P	1	6,7
854	3:30P	5:25P	1	6,7	917	4:00P	6:05P	1	x7
918	6:30P	8:30P	1	x7	961	7:50P	9:00P	0	7
848	7:40P	9:00P	0	6	919	8:10P	9:30P	0	6
844	10:35P	11:50P	0	5,7					

Frequency code: x—Except, 1—Monday, 2—Tuesday, 3—Wednesday, 4—Thursday, 5—Friday, 6—Saturday, 7—Sunday, D—Daily



**LOS ANGELES (LAX) (Cont'd) Res. 213-485-0294**

Flight #	Leave	Arrive	Stops/ Via	Freq.	Flight #	Leave	Arrive	Stops/ Via	Freq.
<b>To Spokane</b>					<b>From Spokane</b>				
888	12:30P	5:15P	3	6,7	921	6:55A	1:35P	4	x7
912	2:00P	6:35P	3	x6,7	875/853	9:30A	5:45P	BOI	6,7
854	3:30P	10:05P	4	7					
<b>To Stockton</b>					<b>From Stockton</b>				
842	7:00A	8:40A	1	D	843	8:55A	10:05A	0	D
846	6:10P	7:20	0	D	845	7:35P	9:00P	1	D

**MEDFORD (MFR) Res. 503-773-1475**

Flight #	Leave	Arrive	Stops/ Via	Freq.	Flight #	Leave	Arrive	Stops/ Via	Freq.
<b>To Boise</b>					<b>From Boise</b>				
860	10:25A	1:45P	1	x6,7	847/867	2:15P	6:20P	PDX	x6,7
<b>To Chico</b>					<b>From Chico</b>				
867/904	6:35P	10:00P	SFO	x6,7	869/860	6:15A	10:10A	SFO	x6
					869/870	6:15A	9:25A	SFO	6
<b>To Las Vegas</b>					<b>From Las Vegas</b>				
860/847	10:25A	6:00P	BOI	x6,7	874/867	2:00P	6:20P	PDX	x6,7
<b>To Palm Springs</b>					<b>From Palm Springs</b>				
867	6:35P	9:25P	1	x5,6,7	860	7:00A	10:10A	1	x6
885	7:05P	9:50P	1	6,7					
<b>To Portland</b>					<b>From Portland</b>				
870	9:40A	11:15A	1	6	867	5:30P	6:20P	0	x6,7
860	10:25A	11:15A	0	x6	885	5:30P	6:45P	1	6,7
<b>To Redmond/Bend</b>					<b>From Redmond/Bend</b>				
870	9:40A	10:20A	0	6	920/867	3:15P	6:20P	PDX	x6,7
					885	6:15P	6:45P	0	6,7
<b>To Reno/Lake Tahoe</b>					<b>From Reno/Lake Tahoe</b>				
870/949	9:40A	1:00P	PDX	6	952/885	1:15P	6:45P	PDX	6,7
860/847	10:25A	4:30P	BOI	x6,7	874/867	3:30P	6:20P	PDX	x6,7
860/949	10:25A	1:00P	PDX	7	874/885	3:30P	6:45P	PDX	6,7
<b>To Sacramento</b>					<b>From Sacramento</b>				
867/904	6:35P	9:20P	SFO	x6,7	869/860	7:00A	10:10A	SFO	x6
					869/870	7:00A	9:25A	SFO	6
<b>To San Francisco</b>					<b>From San Francisco</b>				
867	6:35P	7:45P	0	x6,7	870	8:15A	9:25A	0	6
885	7:05P	8:15P	0	6,7	860	9:00A	10:10A	0	x6

**MODESTO (MOD) Res. 209-523-9099**

Flight #	Leave	Arrive	Stops/ Via	Freq.	Flight #	Leave	Arrive	Stops/ Via	Freq.
<b>To Los Angeles</b>					<b>From Los Angeles</b>				
843	8:25A	10:05A	1	D	842	7:00A	8:10A	0	D
845	8:05P	9:00P	0	D	846	6:10P	7:50P	1	D
<b>To Stockton</b>					<b>From Stockton</b>				
843	8:25A	8:40A	0	D	845	7:30P	7:50P	0	D

**MONTEREY/SALINAS (MRY) Res. 408-372-4111**

Flight #	Leave	Arrive	Stops/ Via	Freq.	Flight #	Leave	Arrive	Stops/ Via	Freq.
<b>To Boise</b>					<b>From Boise</b>				
852	10:50A	2:30P	1	6,7	921/877	10:35A	2:00P	SFO	x6,7
854	4:50P	8:20P	1	7	853	2:45P	4:15P	1	6,7
<b>To Fresno</b>					<b>From Fresno</b>				
877/918	2:15P	7:25P	LAX	x6,7	907/880	6:15A	10:35A	LAX	x6,7
853/918	4:45P	7:25P	LAX	x7	916/877	11:00A	2:00P	SFO	x6,7
<b>To Klamath Falls</b>					<b>From Klamath Falls</b>				
852/920	10:50A	2:05P	SFO	6,7	881/852	5:50A	10:35A	LAX	6
880/920	10:50A	2:05P	SFO	x6,7	881/880	5:50A	10:35A	LAX	x6,7
<b>To Las Vegas</b>					<b>From Las Vegas</b>				
853/908	4:45P	9:15P	LAX	1,2	856/852	7:00A	10:35A	LAX	6
<b>To Los Angeles</b>					<b>From Los Angeles</b>				
851	2:00P	3:00P	0	6,7	852	9:35A	10:35A	0	6,7
877	2:15P	3:10P	0	x6,7	880	9:35A	10:35A	0	x6,7
853	4:45P	5:45P	0	D	854	3:30P	4:30P	0	D
<b>To Palm Springs</b>					<b>From Palm Springs</b>				
852/849	10:50A	2:15P	SFO	7	886/851	11:00A	1:45P	SFO	7
852/865	10:50A	1:30P	SFO	6	888/854	11:35A	4:30P	LAX	6,7
880/865	10:50A	1:30P	SFO	x6,7	864/853	1:50P	4:15P	SFO	6
854/885	4:50P	9:50P	SFO	6,7					
<b>To Portland</b>					<b>From Portland</b>				
852/920	10:50A	3:55P	SFO	6,7	921/851	8:15A	1:45P	SFO	6
880/920	10:50A	3:55P	SFO	x6,7	921/877	8:15A	2:00P	SFO	x6,7
854	4:50P	8:45P	2	7					
<b>To Redding</b>					<b>From Redding</b>				
852/920	10:50A	1:15P	SFO	6,7	Call Your Travel Agent				
880/920	10:50A	1:15P	SFO	x6,7					
<b>To Redmond/Bend</b>					<b>From Redmond/Bend</b>				
852/920	10:50A	3:00P	SFO	6,7	Call Your Travel Agent				
880/920	10:50A	3:00P	SFO	x6,7					
<b>To Sacramento</b>					<b>From Sacramento</b>				
880	10:50A	12:15P	1	x6,7	851	12:15P	1:45P	1	7
854/884	4:50P	8:50P	SFO	6,7	877	12:35P	2:00P	1	x6,7
<b>To San Francisco</b>					<b>From San Francisco</b>				
852	10:50A	11:25A	0	6,7	851	1:15P	1:45P	0	6,7
880	10:50A	11:25A	0	x6,7	877	1:30P	2:00P	0	x6,7
854	4:50P	5:25P	0	6,7	853	3:40P	4:15P	0	6,7
<b>To Santa Barbara</b>					<b>From Santa Barbara</b>				
Call Your Travel Agent					902/851	9:55A	1:45P	SFO	6,7
					902/877	9:55A	2:00P	SFO	x6,7
<b>To Spokane</b>					<b>From Spokane</b>				
854	4:50P	10:05P	3	7	921/851	6:55A	1:45P	SFO	6,7
					921/877	6:55A	2:00P	SFO	x6,7

Frequency code: x—Except, 1—Monday, 2—Tuesday, 3—Wednesday, 4—Thursday  
5—Friday, 6—Saturday, 7—Sunday, D—Daily



**OAKLAND (OAK)**

Res. 416-836-6176

Flight #	Leave	Arrive	Stops/ Via	Freq.	Flight #	Leave	Arrive	Stops/ Via	Freq.
<b>To Las Vegas</b>					<b>From Las Vegas</b>				
871	1:30P	3:50P	1	6	Call Your Travel Agent				
<b>To Palm Springs</b>					<b>From Palm Springs</b>				
871	1:30P	2:50P	0	6	882	11:00A	1:10P	1	6
855	2:00P	3:15P	0	x6,7	866	11:35A	1:40P	1	x6,7
953	4:40P	5:55P	0	7	862	2:30P	4:20P	1	7
<b>To San Jose</b>					<b>From San Jose</b>				
Call Your Travel Agent					871	12:50P	1:10P	0	6
					866	1:20P	1:40P	0	x6,7
					953	4:00P	4:20P	0	7

**PALM SPRINGS (PSP)**

Res. 619-320-7921

Flight #	Leave	Arrive	Stops/ Via	Freq.	Flight #	Leave	Arrive	Stops/ Via	Freq.
<b>To Boise</b>					<b>From Boise</b>				
860	7:00A	1:45P	3	x6,7	921/865	10:35A	1:30P	SFO	x7
888	11:35A	5:00P	3	6,7	847/867	2:15P	9:25P	PDX	x5,6,7
890/854	2:45P	8:20P	SFO	7					
<b>To Chico</b>					<b>From Chico</b>				
858/884	6:10P	9:30P	SFO	7	869/863	6:15A	11:15A	SFO	x7
					869/879	6:15A	11:15A	SFO	7
<b>To Fresno</b>					<b>From Fresno</b>				
860/921	7:00A	12:25P	SFO	x6,7	909	8:30A	10:30A	1	7
888	11:35A	1:25P	1	6,7	916/865	11:00A	1:30P	SFO	x7
864/917	1:50P	4:50P	SFO	x7	923	12:25P	2:25P	1	7
<b>To Klamath Falls</b>					<b>From Klamath Falls</b>				
868/850	3:40P	10:00P	SFO	x6,7	881/863	5:50A	11:15A	SFO	x7
858/850	6:10P	10:00P	SFO	7	919/867	6:05P	9:25P	SFO	x5,6,7
					919/885	6:05P	9:50P	SFO	6,7
<b>To Las Vegas</b>					<b>From Las Vegas</b>				
871	3:05P	3:50P	0	6	Call Your Travel Agent				
<b>To Los Angeles</b>					<b>From Los Angeles</b>				
888	11:35A	12:15P	0	6,7	909	9:45A	10:30A	0	7
					923	1:40P	2:25P	0	7
<b>To Medford</b>					<b>From Medford</b>				
860	7:00A	10:10A	1	x6	867	6:35P	9:25P	1	x5,6,7
					885	7:05P	9:50P	1	6,7
<b>To Monterey/Salinas</b>					<b>From Monterey/Salinas</b>				
886/851	11:00A	1:45P	SFO	7	852/849	10:50A	2:15P	SFO	7
888/854	11:35A	4:30P	LAX	6,7	852/865	10:50A	1:30P	SFO	6
864/853	1:50P	4:15P	SFO	6	880/865	10:50A	1:30P	SFO	x6,7
					854/885	4:50P	9:50P	SFO	6,7
<b>To Oakland</b>					<b>From Oakland</b>				
882	11:00A	1:10P	1	6	871	1:30P	2:50P	0	6
866	11:35A	1:40P	1	x6,7	855	2:00P	3:15P	0	x6,7
862	2:30P	4:20P	1	7	953	4:40P	5:55P	0	7
<b>To Portland</b>					<b>From Portland</b>				
860	7:00A	11:15A	2	x6	921/865	8:15A	1:30P	SFO	x7
888/874	11:35A	5:00P	RNO	6,7	867	5:30P	9:25P	2	x5,6,7
890/854	2:45P	8:45P	SFO	7	885	5:30P	9:50P	3	6,7

**PALM SPRINGS (PSP) (Cont'd)** Res. 619-320-7921

Flight #	Leave	Arrive	Stops/ Via	Freq.	Flight #	Leave	Arrive	Stops/ Via	Freq.
<b>To Redding</b>					<b>From Redding</b>				
868/850	3:40P	9:15P	SFO	x6,7	881/863	6:40A	11:15A	SFO	x7
858/850	6:10P	9:15P	SFO	7	881/879	6:40A	11:15A	SFO	7
					919/867	7:00P	9:25P	SFO	x5,6,7
					919/885	7:00P	9:50P	SFO	6,7
<b>To Redmond/Bend</b>					<b>From Redmond/Bend</b>				
Call Your Travel Agent					919/861	5:10P	10:10P	SFO	5
					919/867	5:10P	9:25P	SFO	x5,6,7
					885	6:15P	9:50P	2	6,7
<b>To Reno</b>					<b>From Reno</b>				
888	11:35A	2:30P	2	6,7	Call Your Travel Agent				
<b>To Sacramento</b>					<b>From Sacramento</b>				
860/880	7:00A	12:15P	SFO	x6,7	869/863	7:00A	11:15A	SFO	x7
860/902	7:00A	11:55A	SFO	7	869/879	7:00A	11:15A	SFO	7
858/884	6:10P	8:50P	SFO	7	851/849	12:15P	2:15P	SFO	7
<b>To San Francisco</b>					<b>From San Francisco</b>				
860	7:00A	8:40A	0	x6	909	7:15A	10:30A	2	7
886	11:00A	12:40P	0	7	863	10:00A	11:15A	0	x7
864	1:50P	3:25P	0	x7	879	10:00A	11:15A	0	7
890	2:45P	4:25P	0	7	923	11:20A	2:25P	2	7
868	3:40P	5:10P	0	x6,7	865	12:15P	1:30P	0	x7
858	6:10P	7:30P	0	7	849	1:00P	2:15P	0	7
					867	8:05P	9:25P	0	x5,6,7
					885	8:30P	9:50P	0	6,7
					861	8:50P	10:10P	0	5
<b>To San Jose</b>					<b>From San Jose</b>				
882	11:00A	12:30P	0	6	871	12:50P	2:50P	1	6
866	11:35A	1:00P	0	x6,7	855	1:20P	3:15P	1	x6,7
862	2:30P	3:45P	0	7	953	4:00P	5:55P	1	7
<b>To Spokane</b>					<b>From Spokane</b>				
888	11:35A	5:15P	4	6,7	921/865	6:55A	1:30P	SFO	x7
890/854	2:45P	10:05P	SFO	7					
<b>To Vancouver, B.C.</b>					<b>From Vancouver, B.C.</b>				
860/8131	7:00A	1:35P	SFO	x6	8130/865	8:30A	1:30P	SFO	x7
					8132/867	4:00P	9:25P	SFO	x6

**PORTLAND (PDX)**

Res. 503-226-0194

Flight #	Leave	Arrive	Stops/ Via	Freq.	Flight #	Leave	Arrive	Stops/ Via	Freq.
<b>To Bakersfield</b>					<b>From Bakersfield</b>				
Call Your Travel Agent					902/920	9:10A	3:55P	SFO	D
					906	12:55P	6:25P	3	x6,7
<b>To Boise</b>					<b>From Boise</b>				
921	8:15A	10:20A	0	x7	922	7:25A	7:40A	0	x7
860	11:35A	1:45P	0	x6,7	847	2:15P	2:30P	0	x6,7
915	7:10P	9:20P	0	7	906	6:10P	2:30P	0	x6,7
883	8:20P	10:30P	0	x6,7	854	8:35P	8:45P	0	7

Flights to and from Vancouver, B.C. are connecting service to CP Air.



**PORTLAND (PDX) (Cont'd)**

Res. 503-226-0194

Flight #	Leave	Arrive	Stops/ Via	Freq.	Flight #	Leave	Arrive	Stops/ Via	Freq.
<b>To Chico</b>					<b>From Chico</b>				
919/884	4:15P	9:30P	SFO	7	869/860	6:15A	11:15A	SFO	x6
919/904	4:15P	10:00P	SFO	x6,7	869/870	6:15A	11:15A	SFO	6
867/904	5:30P	10:00P	SFO	x6,7					
<b>To Fresno</b>					<b>From Fresno</b>				
921	8:15A	12:25P	2	x7	910/920	8:50A	3:55P	SFO	x6
859	3:25P	5:55P	1	6	916/920	11:00A	3:55P	SFO	x7
					888/874	1:45P	5:00P	RNO	6,7
<b>To Klamath Falls</b>					<b>From Klamath Falls</b>				
919	4:15P	5:50P	1	D	920	2:20P	3:55P	1	D
<b>To Las Vegas</b>					<b>From Las Vegas</b>				
847	3:00P	6:00P	1	x6	874	2:00P	5:00P	1	D
<b>To Los Angeles</b>					<b>From Los Angeles</b>				
921	8:15A	1:35P	3	x7	920	10:45A	3:55P	4	D
859	3:25P	7:10P	2	6	854	3:30P	8:45P	3	7
919	4:15P	9:30P	4	6					
<b>To Medford</b>					<b>From Medford</b>				
867	5:30P	6:20P	0	x6,7	870	9:40A	11:15A	1	6
885	5:30P	6:45P	1	6,7	860	10:25A	11:15A	0	x6
<b>To Monterey/Salinas</b>					<b>From Monterey/Salinas</b>				
921/851	8:15A	1:45P	SFO	6	852/920	10:50A	3:55P	SFO	6,7
921/877	8:15A	2:00P	SFO	x6,7	880/920	10:50A	3:55P	SFO	x6,7
					854	4:50P	8:45P	2	7
<b>To Palm Springs</b>					<b>From Palm Springs</b>				
921/865	8:15A	1:30P	SFO	x7	860	7:00A	11:15A	2	x6
867	5:30P	9:25P	2	x5,6,7	888/874	11:35A	5:00P	RNO	6,7
885	5:30P	9:50P	3	6,7	890/854	2:45P	8:45P	SFO	7
<b>To Redding</b>					<b>From Redding</b>				
921/920	8:15A	1:15P	SFO	x7	881/860	6:40A	11:15A	SFO	x6,7
919	4:15P	6:40P	2	D	881/870	6:40A	11:15A	SFO	6
867/850	5:30P	9:15P	SFO	x6,7	881/860	6:40A	11:15A	SFO	7
885/848	5:30P	10:05P	SFO	6	920	1:30P	3:55P	2	D
<b>To Redmond/Bend</b>					<b>From Redmond/Bend</b>				
919	4:15P	4:55P	0	D	870	10:35A	11:15A	0	6
885	5:30P	6:00P	0	6,7	920	3:15P	3:55P	0	D
<b>To Reno/Lake Tahoe</b>					<b>From Reno/Lake Tahoe</b>				
922/875	8:00A	12:00P	GEG	D	952	1:15P	2:45P	0	6,7
949	11:40A	1:00P	0	6,7	888/915	2:50P	6:50P	GEG	6,7
847	3:00P	4:30P	0	x6	874	3:30P	5:00P	0	D
859	3:25P	4:50P	0	6	912/883	4:10P	8:05P	GEG	x6,7
<b>To Sacramento</b>					<b>From Sacramento</b>				
921/880	8:15A	12:15P	SFO	x6,7	869/860	7:00A	11:15A	SFO	x6
919/884	4:15P	8:50P	SFO	7	869/870	7:00A	11:15A	SFO	6
919/904	4:15P	9:20P	SFO	x6,7	877/906	12:35P	6:25P	SFO	x6,7
867/904	5:30P	9:20P	SFO	x6,7					
<b>To San Francisco</b>					<b>From San Francisco</b>				
921	8:15A	11:15A	1	x7	870	8:15A	11:15A	2	6
919	4:15P	7:50P	3	D	860	9:00A	11:15A	1	x6
867	5:30P	7:45P	1	x6,7	920	12:25P	3:55P	3	D
885	5:30P	8:15P	2	6,7	906	3:20P	6:25P	1	x6,7
					854	5:45P	8:45P	1	7
<b>To Santa Barbara</b>					<b>From Santa Barbara</b>				
Call Your Travel Agent					902/920	9:55A	3:55P	SFO	D
					906	1:45P	6:25P	2	x6,7

**PORTLAND (PDX) (Cont'd)**

Res. 503-226-0194

Flight #	Leave	Arrive	Stops/ Via	Freq.	Flight #	Leave	Arrive	Stops/ Via	Freq.
<b>To Spokane</b>					<b>From Spokane</b>				
922	8:00A	9:00A	0	D	921	6:55A	8:00A	0	x7
906	6:45P	7:45P	0	x6,7	915	5:45P	6:50P	0	6,7
854	9:05P	10:05P	0	7	883	7:00P	8:05P	0	x6,7
<b>To Stockton</b>					<b>From Stockton</b>				
Call Your Travel Agent					843/920	8:55A	3:55P	LAX	D

**REDDING (RDD)**

Res. 916-221-1890

Flight #	Leave	Arrive	Stops/ Via	Freq.	Flight #	Leave	Arrive	Stops/ Via	Freq.
<b>To Bakersfield</b>					<b>From Bakersfield</b>				
881/869	6:40A	8:55A	SFO	D	902/920	9:10A	1:15P	SFO	D
					884/848	6:45P	10:05P	SFO	6
					884/850	6:45P	9:15P	SFO	7
<b>To Boise</b>					<b>From Boise</b>				
881/860	6:40A	1:45P	SFO	x6,7	921/920	10:35A	1:15P	SFO	x7
					847/919	2:15P	6:40P	PDX	x6,7
<b>To Fresno</b>					<b>From Fresno</b>				
881/916	6:40A	10:45A	LAX	x7	910/920	8:50A	1:15P	SFO	x6
					916/920	11:00A	1:15P	SFO	x7
<b>To Klamath Falls</b>					<b>From Klamath Falls</b>				
920	1:30P	2:05P	0	D	881	5:50A	6:25A	0	x7
850	9:30P	10:00P	0	x6	919	6:05P	6:40P	0	D
<b>To Los Angeles</b>					<b>From Los Angeles</b>				
881	6:40A	8:59A	1	D	920	10:45A	1:15P	1	D
919	7:00P	9:30P	1	6	854/850	3:30P	9:15P	SFO	7
					848	7:40P	10:05P	1	6
<b>To Monterey/Salinas</b>					<b>From Monterey/Salinas</b>				
Call Your Travel Agent					852/920	10:50A	1:15P	SFO	6,7
					880/920	10:50A	1:15P	SFO	x6,7
<b>To Palm Springs</b>					<b>From Palm Springs</b>				
881/863	6:40A	11:15A	SFO	x7	868/850	3:40P	9:15P	SFO	x6,7
881/879	6:40A	11:15A	SFO	7	858/850	6:10P	9:15P	SFO	7
919/867	7:00P	9:25P	SFO	x5,6,7					
919/885	7:00P	9:50P	SFO	6,7					
<b>To Portland</b>					<b>From Portland</b>				
881/860	6:40A	11:15A	SFO	x6,7	921/920	8:15A	1:15P	SFO	x7
881/870	6:40A	11:15A	SFO	6	919	4:15P	6:40P	2	D
881/860	6:40A	11:15A	SFO	7	867/850	5:30P	9:15P	SFO	x6,7
920	1:30P	3:55P	2	D	885/848	5:30P	10:05P	SFO	6
<b>To Redmond/Bend</b>					<b>From Redmond/Bend</b>				
920	1:30P	3:00P	1	D	919	5:10P	6:40P	1	D
<b>To Sacramento</b>					<b>From Sacramento</b>				
919/884	7:00P	8:50P	SFO	7	Call Your Travel Agent				
919/904	7:00P	9:20P	SFO	x6,7					

Frequency code: x—Except, 1—Monday, 2—Tuesday, 3—Wednesday, 4—Thursday  
5—Friday, 6—Saturday, 7—Sunday, D—Daily



**REDDING (RDD) (Cont'd)**

Res. 916-221-1890

Stops/					Stops/				
Flight #	Leave	Arrive	Via	Freq.	Flight #	Leave	Arrive	Via	Freq.
<b>To San Francisco</b>					<b>From San Francisco</b>				
881	6:40A	7:30A	0	D	920	12:25P	1:15P	0	D
919	7:00P	7:50P	0	D	850	8:25P	9:15P	0	x6
					848	9:15P	10:05P	0	6
<b>To Santa Barbara</b>					<b>From Santa Barbara</b>				
881/869	6:40A	9:40A	SFO	D	902/920	9:55A	1:15P	SFO	D
					884/848	6:00P	10:05P	SFO	6
					884/850	6:00P	9:15P	SFO	7
<b>To Spokane</b>					<b>From Spokane</b>				
920/906	1:30P	7:45P	PDX	x6,7	921/920	6:55A	1:15P	SFO	x7
<b>To Stockton</b>					<b>From Stockton</b>				
Call Your Travel Agent					843/920	8:55A	1:15P	LAX	D

**REDMOND/BEND (RDM)**

Res. 503-923-2233

Stops/					Stops/				
Flight #	Leave	Arrive	Via	Freq.	Flight #	Leave	Arrive	Via	Freq.
<b>To Bakersfield</b>					<b>From Bakersfield</b>				
Call Your Travel Agent					902/920	9:10A	3:00P	SFO	D
<b>To Boise</b>					<b>From Boise</b>				
Call Your Travel Agent					921/920	10:35A	3:00P	SFO	x7
					847/919	2:15P	4:55P	PDX	x6,7
<b>To Chico</b>					<b>From Chico</b>				
919/884	5:10P	9:30P	SFO	6	869/870	6:15A	10:20A	SFO	6
<b>To Fresno</b>					<b>From Fresno</b>				
Call Your Travel Agent					910/920	8:50A	3:00P	SFO	x6
					916/920	11:00A	3:00P	SFO	x7
<b>To Klamath Falls</b>					<b>From Klamath Falls</b>				
919	5:10P	5:50P	0	D	920	2:20P	3:00P	0	D
<b>To Las Vegas</b>					<b>From Las Vegas</b>				
Call Your Travel Agent					874/885	2:00P	6:00P	PDX	6,7
<b>To Los Angeles</b>					<b>From Los Angeles</b>				
919	5:10P	9:30P	3	6	920	10:45A	3:00P	3	D
<b>To Medford</b>					<b>From Medford</b>				
885	6:15P	6:45P	0	6,7	870	9:40A	10:20A	0	6
<b>To Monterey/Salinas</b>					<b>From Monterey/Salinas</b>				
Call Your Travel Agent					852/920	10:50A	3:00P	SFO	6,7
					880/920	10:50A	3:00P	SFO	x6,7
<b>To Palm Springs</b>					<b>From Palm Springs</b>				
919/861	5:10P	10:10P	SFO	5	Call Your Travel Agent				
919/867	5:10P	9:25P	SFO	x5,6,7					
885	6:15P	9:50P	2	6,7					
<b>To Portland</b>					<b>From Portland</b>				
870	10:35A	11:15A	0	6	919	4:15P	4:55P	0	D
920	3:15P	3:55P	0	D	885	5:30P	6:00P	0	6,7
<b>To Redding</b>					<b>From Redding</b>				
919	5:10P	6:40P	1	D	920	1:30P	3:00P	1	D

**REDMOND/BEND (RDM) (Cont'd) Res. 503-923-2233**

Stops/					Stops/				
Flight #	Leave	Arrive	Via	Freq.	Flight #	Leave	Arrive	Via	Freq.
<b>To Reno/Lake Tahoe</b>					<b>From Reno/Lake Tahoe</b>				
870/949	10:35A	1:00P	PDX	6	952/919	1:15P	4:55P	PDX	6,7
					874/885	3:30P	6:00P	PDX	6,7
<b>To Sacramento</b>					<b>From Sacramento</b>				
919/884	5:10P	8:50P	SFO	7	869/870	7:00A	10:20A	SFO	6
919/904	5:10P	9:20P	SFO	x6,7					
<b>To San Francisco</b>					<b>From San Francisco</b>				
919	5:10P	7:50P	2	D	870	8:15A	10:20A	1	6
885	6:15P	8:15P	1	6,7	920	12:25P	3:00P	2	D
<b>To Santa Barbara</b>					<b>From Santa Barbara</b>				
Call Your Travel Agent					902/920	9:55A	3:00P	SFO	D
<b>To Spokane</b>					<b>From Spokane</b>				
920/906	3:15P	7:45P	PDX	x6,7	921/920	6:55A	3:00P	SFO	x7
<b>To Stockton</b>					<b>From Stockton</b>				
Call Your Travel Agent					843/920	8:55A	3:00P	LAX	D

**RENO/LAKE TAHOE (RNO) Res. 702-322-3801**

Stops/					Stops/				
Flight #	Leave	Arrive	Via	Freq.	Flight #	Leave	Arrive	Via	Freq.
<b>To Boise</b>					<b>From Boise</b>				
888	2:50P	5:00P	0	6,7	875	11:50A	12:00P	0	D
912	4:10P	6:20P	0	x6,7	847	2:15P	4:30P	1	x6,7
<b>To Fresno</b>					<b>From Fresno</b>				
859	5:10P	5:55P	0	6	888	1:45P	2:30P	0	6,7
878	8:00P	8:45P	0	x6	912	3:10P	3:55P	0	x6,7
<b>To Klamath Falls</b>					<b>From Klamath Falls</b>				
952/919	1:15P	5:50P	PDX	6,7	Call Your Travel Agent				
<b>To Las Vegas</b>					<b>From Las Vegas</b>				
873	8:35A	9:45A	0	x6,7	872	7:00A	8:10A	0	x6,7
875	12:15P	1:30P	0	D	874	2:00P	3:15P	0	D
847	4:45P	6:00P	0	x6	876	6:25P	7:40P	0	x6
<b>To Los Angeles</b>					<b>From Los Angeles</b>				
859	5:10P	7:10P	1	6	888	12:30P	2:30P	1	6,7
878	8:00P	9:55P	1	x6	912	2:00P	3:55P	1	x6,7
<b>To Medford</b>					<b>From Medford</b>				
952/885	1:15P	6:45P	PDX	6,7	870/949	9:40A	1:00P	PDX	6
874/867	3:30P	6:20P	PDX	x6,7	860/847	10:25A	4:30P	BOI	x6,7
874/885	3:30P	6:45P	PDX	6,7	860/949	10:25A	1:00P	PDX	7
<b>To Palm Springs</b>					<b>From Palm Springs</b>				
Call Your Travel Agent					888	11:35A	2:30P	2	6,7
<b>To Portland</b>					<b>From Portland</b>				
952	1:15P	2:45P	0	6,7	922/875	8:00A	12:00P	GEG	D
888/915	2:50P	6:50P	GEG	6,7	949	11:40A	1:00P	0	6,7
874	3:30P	5:00P	0	D	847	3:00P	4:30P	0	x6
912/883	4:10P	8:05P	GEG	x6,7	859	3:25P	4:50P	0	6
<b>To Redmond/Bend</b>					<b>From Redmond/Bend</b>				
952/919	1:15P	4:55P	PDX	6,7	870/949	10:35A	1:00P	PDX	6
874/885	3:30P	6:00P	PDX	6,7					

Frequency code: x—Except, 1—Monday, 2—Tuesday, 3—Wednesday, 4—Thursday, 5—Friday, 6—Saturday, 7—Sunday, D—Daily



**RENO/LAKE TAHOE (RNO) (Cont'd) Res. 702-322-3801**

Flight #	Leave	Arrive	Stops/ Via	Freq.	Flight #	Leave	Arrive	Stops/ Via	Freq.
<b>To Spokane</b>					<b>From Spokane</b>				
888	2:50P	5:15P	1	6,7	875	9:30A	12:00P	1	D
874/906	3:30P	7:45P	PDX	x6,7					
912	4:10P	6:35P	1	x6,7					
<b>To Stockton</b>					<b>From Stockton</b>				
Call Your Travel Agent					843/888	8:55A	2:30P	LAX	6,7

**SACRAMENTO (SMF) Res. 916-442-0353**

Flight #	Leave	Arrive	Stops/ Via	Freq.	Flight #	Leave	Arrive	Stops/ Via	Freq.
<b>To Bakersfield</b>					<b>From Bakersfield</b>				
869	7:00A	8:55A	1	D	902	9:10A	11:55A	2	7
					902/880	9:10A	12:15P	SFO	x6,7
					884	6:45P	8:50P	1	6,7
					904	7:30P	9:20P	1	x6,7
<b>To Boise</b>					<b>From Boise</b>				
869/860	7:00A	1:45P	SFO	x6,7	921/880	10:35A	12:15P	SFO	x6,7
877/906	12:35P	5:55P	SFO	x6,7					
<b>To Chico</b>					<b>From Chico</b>				
884	9:05P	9:30P	0	6,7	869	6:15A	6:40A	0	D
904	9:35P	10:00P	0	x6,7					
<b>To Fresno</b>					<b>From Fresno</b>				
877/917	12:35P	4:50P	SFO	x6,7	910/880	8:50A	12:15P	SFO	x6,7
					918/904	7:45P	9:20P	SFO	x6,7
<b>To Klamath Falls</b>					<b>From Klamath Falls</b>				
Call Your Travel Agent					919/884	6:05P	8:50P	SFO	7
					919/904	6:05P	9:20P	SFO	x6,7
<b>To Los Angeles</b>					<b>From Los Angeles</b>				
869/881	7:00A	8:59A	SFO	D	910/902	7:40A	11:55A	SFO	7
851	12:15P	3:00P	2	7	880	9:35A	12:15P	2	x6,7
877	12:35P	3:10P	2	x6,7	854/884	3:30P	8:50P	SFO	6,7
					918/904	6:30P	9:20P	SFO	x6,7
<b>To Medford</b>					<b>From Medford</b>				
869/860	7:00A	10:10A	SFO	x6	867/904	6:35P	9:20P	SFO	x6,7
869/870	7:00A	9:25A	SFO	6					
<b>To Monterey/Salinas</b>					<b>From Monterey/Salinas</b>				
851	12:15P	1:45P	1	7	880	10:50A	12:15P	1	x6,7
877	12:35P	2:00P	1	x6,7	854/884	4:50P	8:50P	SFO	6,7
<b>To Palm Springs</b>					<b>From Palm Springs</b>				
869/863	7:00A	11:15A	SFO	x7	860/880	7:00A	12:15P	SFO	x6,7
869/879	7:00A	11:15A	SFO	7	860/902	7:00A	11:55A	SFO	7
851/849	12:15P	2:15P	SFO	7	858/884	6:10P	8:50P	SFO	7
<b>To Portland</b>					<b>From Portland</b>				
869/860	7:00A	11:15A	SFO	x6	921/880	8:15A	12:15P	SFO	x6,7
869/870	7:00A	11:15A	SFO	6	919/884	4:15P	8:50P	SFO	7
877/906	12:35P	6:25P	SFO	x6,7	919/904	4:15P	9:20P	SFO	x6,7
					867/904	5:30P	9:20P	SFO	x6,7
<b>To Redding</b>					<b>From Redding</b>				
Call Your Travel Agent					919/884	7:00P	8:50P	SFO	7
					919/904	7:00P	9:20P	SFO	x6,7

**SACRAMENTO (SMF) (Cont'd) Res. 916-442-0353**

Flight #	Leave	Arrive	Stops/ Via	Freq.	Flight #	Leave	Arrive	Stops/ Via	Freq.
<b>To Redmond/Bend</b>					<b>From Redmond/Bend</b>				
869/870	7:00A	10:20A	SFO	6	919/884	5:10P	8:50P	SFO	6,7
					919/904	5:10P	9:20P	SFO	x6,7
<b>To San Francisco</b>					<b>From San Francisco</b>				
869	7:00A	7:35A	0	D	902	11:15A	11:55A	0	7
851	12:15P	12:50P	0	7	880	11:40A	12:15P	0	x6,7
877	12:35P	1:10P	0	x6,7	884	8:15P	8:50P	0	6,7
					904	8:45P	9:20P	0	x6,7
<b>To Santa Barbara</b>					<b>From Santa Barbara</b>				
869	7:00A	9:40A	2	D	902	9:55A	11:55A	1	7
					884	6:00P	8:50P	2	6,7
					904	6:45P	9:20P	2	x6,7
<b>To Spokane</b>					<b>From Spokane</b>				
877/906	12:35P	7:45P	SFO	x6,7	921/880	6:55A	12:15P	SFO	x6,7

**SAN FRANCISCO (SFO) Res. 415-362-0676**

Flight #	Leave	Arrive	Stops/ Via	Freq.	Flight #	Leave	Arrive	Stops/ Via	Freq.
<b>To Bakersfield</b>					<b>From Bakersfield</b>				
869	7:55A	8:55A	0	D	902	9:10A	11:00A	1	D
905	11:25A	12:30P	0	x6,7	906	12:55P	2:50P	1	x6,7
877	4:45P	6:30P	1	6,7	884	6:45P	7:45P	0	6,7
903	5:30P	7:15P	1	x6,7	904	7:30P	8:30P	0	x6,7
<b>To Boise</b>					<b>From Boise</b>				
860	9:00A	1:45P	2	x6,7	921	10:35A	11:15A	0	x7
852	11:45A	2:30P	0	6,7	847/867	2:15P	7:45P	PDX	x6,7
906	3:20P	5:55P	0	x6,7	853	2:45P	3:15P	0	6,7
854	5:45P	8:20P	0	7					
<b>To Chico</b>					<b>From Chico</b>				
884	8:15P	9:30P	1	6,7	869	6:15A	7:35A	1	D
904	8:45P	10:00P	1	x6,7					
<b>To Fresno</b>					<b>From Fresno</b>				
909	7:15A	8:05A	0	D	910	8:50A	9:35A	0	x6
923	11:20A	12:05P	0	7	916	11:00A	11:45A	0	x7
921	11:35A	12:25P	0	x7	914	3:25P	4:15P	0	6
917	4:00P	4:50P	0	x7	918	7:45P	8:30P	0	x7
<b>To Klamath Falls</b>					<b>From Klamath Falls</b>				
920	12:25P	2:05P	1	D	881	5:50A	7:30A	1	x7
850	8:25P	10:00P	1	x6	919	6:05P	7:50P	1	D
<b>To Las Vegas</b>					<b>From Las Vegas</b>				
917/926	4:00P	10:25P	LAX	5	856	7:00A	9:35A	1	6
961/926	7:50P	10:25P	LAX	7	844	9:15P	11:50P	1	5,7
<b>To Los Angeles</b>					<b>From Los Angeles</b>				
909	7:15A	9:25A	1	D	910	7:40A	9:35A	1	x6
881	7:50A	8:59A	0	D	856	8:20A	9:35A	0	6
923	11:20A	1:20P	1	7	852	9:35A	11:25A	1	6,7
921	11:35A	1:35P	1	x7	880	9:35A	11:25A	1	x6,7
851	1:15P	3:00P	1	6,7	916	9:50A	11:45A	1	x7
877	1:30P	3:10P	1	x6,7	920	10:45A	12:05P	0	D
853	3:40P	5:45P	1	6,7	914	2:15P	4:15P	1	6
917	4:00P	6:05P	1	x7	854	3:30P	5:25P	1	6,7
951	7:50P	9:00P	0	7	918	6:30P	8:30P	1	x7
919	8:10P	9:30P	0	6	848	7:40P	9:00P	0	6
					844	10:35P	11:50P	0	5,7

Frequency code: x—Except, 1—Monday, 2—Tuesday, 3—Wednesday, 4—Thursday  
5—Friday, 6—Saturday, 7—Sunday, D—Daily



**SAN FRANCISCO (SFO) (Cont'd) Res. 415-362-0676**

Flight #	Leave	Arrive	Stops/ Via	Freq.	Flight #	Leave	Arrive	Stops/ Via	Freq.
<b>To Medford</b>					<b>From Medford</b>				
870	8:15A	9:25A	0	6	867	6:35P	7:45P	0	x6,7
860	9:00A	10:10A	0	x6	885	7:05P	8:15P	0	6,7
<b>To Monterey/Salinas</b>					<b>From Monterey/Salinas</b>				
851	1:15P	1:45P	0	6,7	852	10:50A	11:25A	0	6,7
877	1:30P	2:00P	0	x6,7	880	10:50A	11:25A	0	x6,7
853	3:40P	4:15P	0	6,7	854	4:50P	5:25P	0	6,7
<b>To Palm Springs</b>					<b>From Palm Springs</b>				
909	7:15A	10:30A	2	7	860	7:00A	8:40A	0	x6
863	10:00A	11:15A	0	x7	886	11:00A	12:40P	0	7
879	10:00A	11:15A	0	7	864	1:50P	3:25P	0	x7
923	11:20A	2:25P	2	7	890	2:45P	4:25P	0	7
865	12:15P	1:30P	0	x7	868	3:40P	5:10P	0	x6,7
849	1:00P	2:15P	0	7	858	6:10P	7:30P	0	7
867	8:05P	9:25P	0	x5,6,7					
885	8:30P	9:50P	0	6,7					
861	8:50P	10:10P	0	5					
<b>To Portland</b>					<b>From Portland</b>				
870	8:15A	11:15A	2	6	921	8:15A	11:15A	1	x7
860	9:00A	11:15A	1	x6	919	4:15P	7:50P	3	D
920	12:25P	3:55P	3	D	867	5:30P	7:45P	1	x6,7
906	3:20P	6:25P	1	x6,7	885	5:30P	8:15P	2	6,7
854	5:45P	8:45P	1	7					
<b>To Redding</b>					<b>From Redding</b>				
920	12:25P	1:15P	0	D	881	6:40A	7:30A	0	D
850	8:25P	9:15P	0	x6	919	7:00P	7:50P	0	D
848	9:15P	10:05P	0	6					
<b>To Redmond/Bend</b>					<b>From Redmond/Bend</b>				
870	8:15A	10:20A	1	6	919	5:10P	7:50P	2	D
920	12:25P	3:00P	2	D	885	6:15P	8:15P	1	6,7
<b>To Sacramento</b>					<b>From Sacramento</b>				
902	11:15A	11:55A	0	7	869	7:00A	7:35A	0	D
880	11:40A	12:15P	0	x6,7	851	12:15P	12:50P	0	7
884	8:15P	8:50P	0	6,7	877	12:35P	1:10P	0	x6,7
904	8:45P	9:20P	0	x6,7					
<b>To Santa Barbara</b>					<b>From Santa Barbara</b>				
869	7:55A	9:40A	1	D	902	9:55A	11:00A	0	D
905	11:25A	1:25P	1	x6,7	906	1:45P	2:50P	0	x6,7
877	4:45P	5:45P	0	6,7	884	6:00P	7:45P	1	6,7
903	5:30P	6:30P	0	x6,7	904	6:45P	8:30P	1	x6,7
<b>To Spokane</b>					<b>From Spokane</b>				
906	3:20P	7:45P	2	x6,7	921	6:55A	11:15A	2	x7
854	5:45P	10:05P	2	7	875/853	9:30A	3:15P BOI		6,7

**SAN JOSE (SJC)**
**Res. 408-293-2199**

Flight #	Leave	Arrive	Stops/ Via	Freq.	Flight #	Leave	Arrive	Stops/ Via	Freq.
<b>To Las Vegas</b>					<b>From Las Vegas</b>				
871	12:50P	3:50P	2	6	Call Your Travel Agent				
<b>To Oakland</b>					<b>From Oakland</b>				
871	12:50P	1:10P	0	6	Call Your Travel Agent				
866	1:20P	1:40P	0	x6,7	Call Your Travel Agent				
953	4:00P	4:20P	0	7	Call Your Travel Agent				

**SAN JOSE (SJC) (Cont'd)**
**Res. 408-293-2199**

Flight #	Leave	Arrive	Stops/ Via	Freq.	Flight #	Leave	Arrive	Stops/ Via	Freq.
<b>To Palm Springs</b>					<b>From Palm Springs</b>				
871	12:50P	2:50P	1	6	882	11:00A	12:30P	0	6
855	1:20P	3:15P	1	x6,7	866	11:35A	1:00P	0	x6,7
953	4:00P	5:55P	1	7	862	2:30P	3:45P	0	7

**SANTA BARBARA (SBA)**
**Res. 805-964-3561**

Flight #	Leave	Arrive	Stops/ Via	Freq.	Flight #	Leave	Arrive	Stops/ Via	Freq.
<b>To Bakersfield</b>					<b>From Bakersfield</b>				
884	6:00P	6:30P	0	6,7	902	9:10A	9:40A	0	D
904	6:45P	7:15P	0	x6,7	906	12:55P	1:25P	0	x6,7
<b>To Boise</b>					<b>From Boise</b>				
902/852	9:55A	2:30P	SFO	6,7	853/877	2:45P	5:45P	SFO	6,7
906	1:45P	5:55P	1	x6,7					
<b>To Chico</b>					<b>From Chico</b>				
884	6:00P	9:30P	3	6,7	869	6:15A	9:40A	3	D
904	6:45P	10:00P	3	x6,7					
<b>To Klamath Falls</b>					<b>From Klamath Falls</b>				
902/920	9:55A	2:05P	SFO	D	881/869	5:50A	9:40A	SFO	x7
884/850	6:00P	10:00P	SFO	7					
<b>To Monterey/Salinas</b>					<b>From Monterey/Salinas</b>				
902/851	9:55A	1:45P	SFO	6	Call Your Travel Agent				
902/877	9:55A	2:00P	SFO	x6,7					
<b>To Portland</b>					<b>From Portland</b>				
902/920	9:55A	3:55P	SFO	D	Call Your Travel Agent				
906	1:45P	6:25P	2	x6,7					
<b>To Redding</b>					<b>From Redding</b>				
902/920	9:55A	1:15P	SFO	D	881/869	6:40A	9:40A	SFO	D
884/848	6:00P	10:05P	SFO	6					
884/850	6:00P	9:15P	SFO	7					
<b>To Redmond/Bend</b>					<b>From Redmond/Bend</b>				
902/920	9:55A	3:00P	SFO	D	Call Your Travel Agent				
<b>To Sacramento</b>					<b>From Sacramento</b>				
902	9:55A	11:55A	1	7	869	7:00A	9:40A	2	D
884	6:00P	8:50P	2	6,7					
904	6:45P	9:20P	2	x6,7					
<b>To Sacramento</b>					<b>From Sacramento</b>				
902	9:55A	11:00A	0	D	869	7:55A	9:40A	1	D
906	1:45P	2:50P	0	x6,7	905	11:25A	1:25P	1	x6,7
884	6:00P	7:45P	1	6,7	877	4:45P	5:45P	0	6,7
904	6:45P	8:30P	1	x6,7	903	5:30P	6:30P	0	x6,7
<b>To Spokane</b>					<b>From Spokane</b>				
906	1:45P	7:45P	3	x6,7	Call Your Travel Agent				

**SPOKANE (GEG)**
**Res. 1-800-538-8747**

Flight #	Leave	Arrive	Stops/ Via	Freq.	Flight #	Leave	Arrive	Stops/ Via	Freq.
<b>To Bakersfield</b>					<b>From Bakersfield</b>				
Call Your Travel Agent					906	12:55P	7:45P	4	x6,7

Frequency code: x—Except, 1—Monday, 2—Tuesday, 3—Wednesday, 4—Thursday  
5—Friday, 6—Saturday, 7—Sunday, D—Daily



**SPOKANE (GEG) (Cont'd)****Res. 1-800-538-8747**

Flight #	Leave	Arrive	Stops/ Via	Freq.	Flight #	Leave	Arrive	Stops/ Via	Freq.
<b>To Boise</b>					<b>From Boise</b>				
921	6:55A	10:20A	1	x7	922	7:25A	9:00A	1	x7
875	9:30A	11:30A	0	D	888	5:15P	5:15P	0	6,7
915	5:45P	9:20P	1	7	906	6:10P	7:45P	1	x6,7
883	7:00P	10:30P	1	x6,7	912	6:35P	6:35P	0	x6,7
					854	8:35P	10:05P	1	7
<b>To Fresno</b>					<b>From Fresno</b>				
921	6:55A	12:25P	3	x7	888	1:45P	5:15P	2	6,7
					912	3:10P	6:35P	2	x6,7
<b>To Las Vegas</b>					<b>From Las Vegas</b>				
875	9:30A	1:30P	2	D	874/912	2:00P	6:35P RNO		x6,7
<b>To Los Angeles</b>					<b>From Los Angeles</b>				
921	6:55A	1:35P	4	x7	888	12:30P	5:15P	3	6,7
875/853	9:30A	5:45P	BOI	6,7	912	2:00P	6:35P	3	x6,7
					854	3:30P	10:05P	4	7
<b>To Modesto</b>					<b>From Modesto</b>				
Call Your Travel Agent					843/888	8:25A	5:15P LAX		6,7
<b>To Monterey/Salinas</b>					<b>From Monterey/Salinas</b>				
921/851	6:55A	1:45P	SFO	6	854	4:50P	10:05P	3	7
921/877	6:55A	2:00P	SFO	x6,7					
<b>To Palm Springs</b>					<b>From Palm Springs</b>				
921/865	6:55A	1:30P	SFO	x7	888	11:35A	5:15P	4	6,7
					890/854	2:45P	10:05P SFO		7
<b>To Portland</b>					<b>From Portland</b>				
921	6:55A	8:00A	0	x7	922	8:00A	9:00A	0	D
915	5:45P	6:50P	0	6,7	906	6:45P	7:45P	0	x6,7
883	7:00P	8:05P	0	x6,7	854	9:05P	10:05P	0	7
<b>To Redding</b>					<b>From Redding</b>				
921/920	6:55A	1:15P	SFO	x7	920/906	1:30P	7:45P PDX		x6,7
<b>To Redmond/Bend</b>					<b>From Redmond/Bend</b>				
921/920	6:55A	3:00P	SFO	x7	920/906	3:15P	7:45P PDX		x6,7
<b>To Reno/Lake Tahoe</b>					<b>From Reno/Lake Tahoe</b>				
875	9:30A	12:00P	1	D	888	2:50P	5:15P	1	6,7
					874/906	3:30P	7:45P PDX		x6,7
					912	4:10P	6:35P	1	x6,7
<b>To Sacramento</b>					<b>From Sacramento</b>				
921/880	6:55A	12:15P	SFO	x6,7	877/906	12:35P	7:45P SFO		x6,7
<b>To San Francisco</b>					<b>From San Francisco</b>				
921	6:55A	11:15A	2	x7	906	3:20P	7:45P	2	x6,7
875/853	9:30A	3:15P	BOI	6,7	854	5:45P	10:05P	2	7
<b>To Santa Barbara</b>					<b>From Santa Barbara</b>				
Call Your Travel Agent					906	1:45P	7:45P	3	x6,7
<b>To Stockton</b>					<b>From Stockton</b>				
Call Your Travel Agent					843/888	8:55A	5:15P LAX		6,7

**STOCKTON (SCK)****Res. 209-474-0256**

Flight #	Leave	Arrive	Stops/ Via	Freq.	Flight #	Leave	Arrive	Stops/ Via	Freq.
<b>To Los Angeles</b>					<b>From Los Angeles</b>				
843	8:55A	10:05A	0	D	842	7:00A	8:40A	1	D
845	7:35P	9:00P	1	D	846	6:10P	7:20P	0	D

**STOCKTON (SCK) (Cont'd)****Res. 209-474-0256**

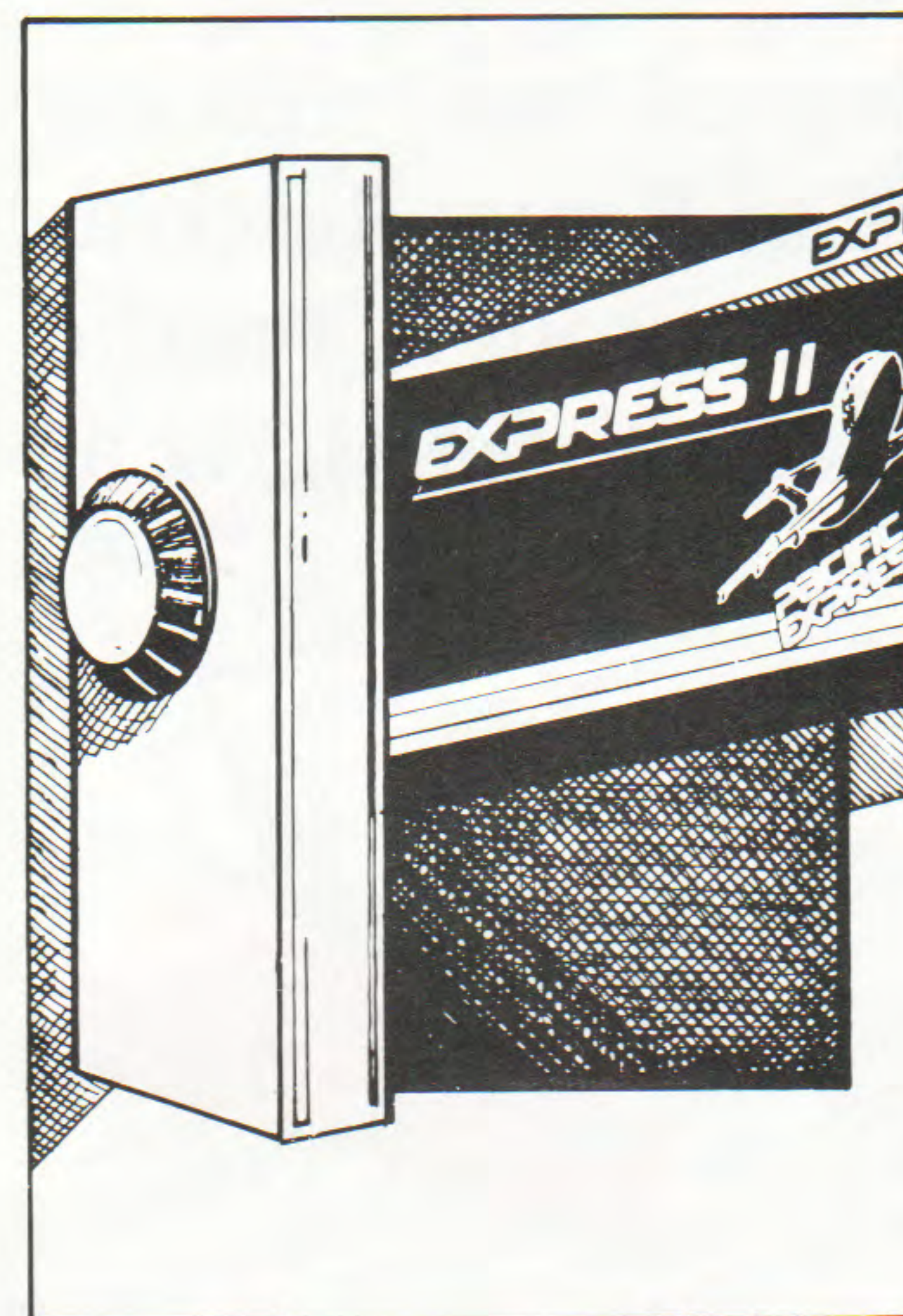
Flight #	Leave	Arrive	Stops/ Via	Freq.	Flight #	Leave	Arrive	Stops/ Via	Freq.
<b>To Modesto</b>					<b>From Modesto</b>				
845	7:35P	7:50P	0	D	843	8:25A	8:40A	0	D
<b>To Portland</b>					<b>From Portland</b>				
843/920	8:55A	3:55P	LAX	D	Call Your Travel Agent				
<b>To Redmond/Bend</b>					<b>From Redmond/Bend</b>				
843/920	8:55A	3:00P	LAX	D	Call Your Travel Agent				
<b>To Reno/Lake Tahoe</b>					<b>From Reno/Lake Tahoe</b>				
843/888	8:55A	2:30P	LAX	6,7	Call Your Travel Agent				
<b>To Spokane</b>					<b>From Spokane</b>				
843/888	8:55A	5:15P	LAX	6,7	Call Your Travel Agent				

**VANCOUVER, B.C. (YVR)****Res. 604-682-1411**

Flight #	Leave	Arrive	Stops/ Via	Freq.	Flight #	Leave	Arrive	Stops/ Via	Freq.
<b>To Palm Springs</b>					<b>From Palm Springs</b>				
8130/865	8:30A	1:30P	SFO	x7	860/8131	7:00A	1:35P	SFO	x6
8132/867	4:00P	9:25P	SFO	x5,6,7					

Flights to and From Vancouver, B.C. are connecting service on CP Air.

**LAST CHANCE  
TO LOCK IN LOW AIR FARES  
FOREVER...**



**...WITH THE  
EXPRESS II  
TICKET BOOK  
FROM PACIFIC  
EXPRESS**

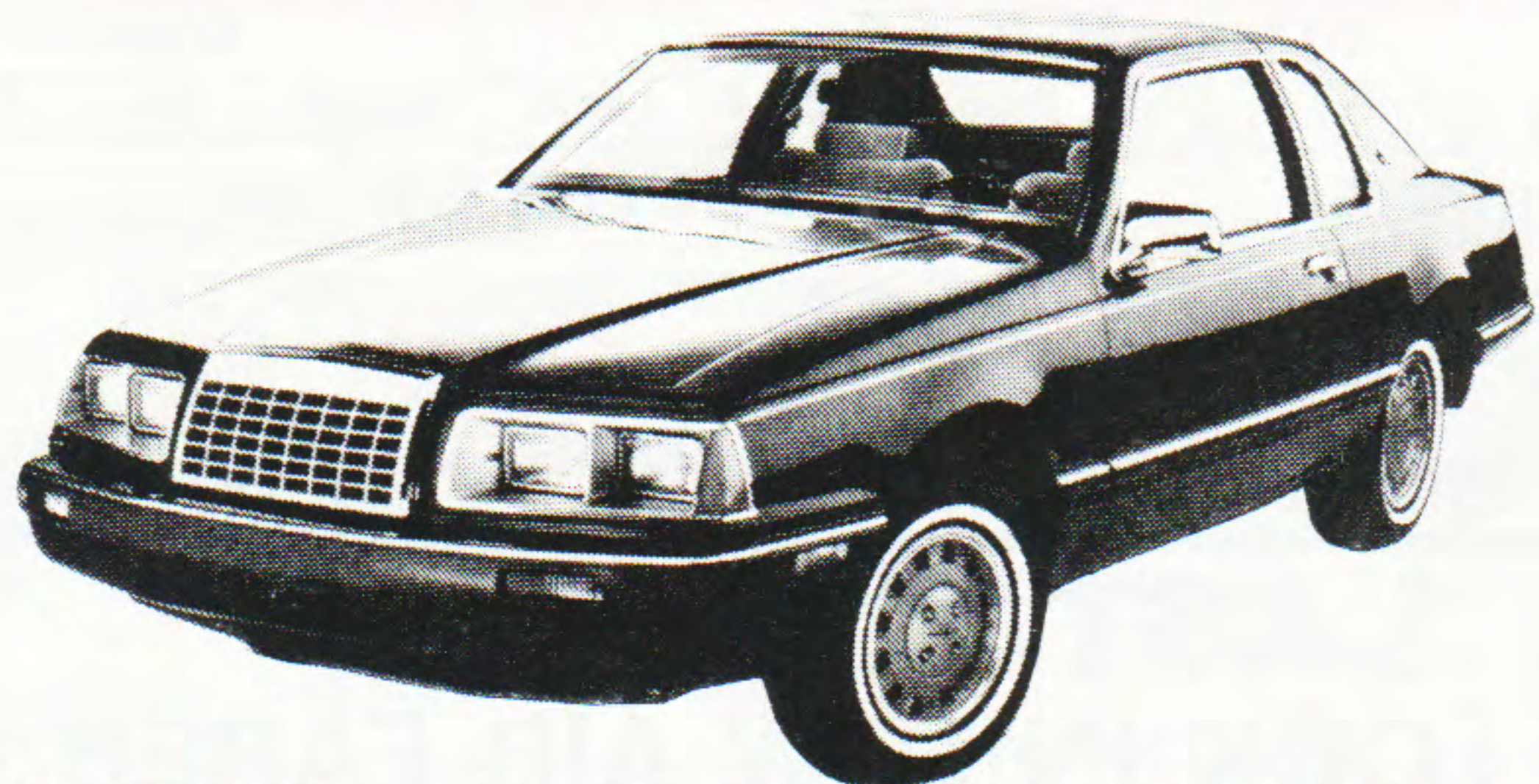
For a limited time only, you can lock in low air fares forever with Pacific Express' exciting Express II ticket books for only \$480.00 per book. Imagine Los Angeles to San Francisco for \$40.00; Portland to Reno only \$80.00 forever! Lock in your company's travel budget or make an Express II ticket book an exciting gift for family or friends.

Express II ticket books contain 12 (twelve) flight coupons valid forever on Pacific Express flights. We've made the rules simple and consistent with normal air passenger travel to increase the value and convenience. One, two or three Express II coupons will be required, depending on flight itinerary.

Call Your Travel Agent or Pacific Express at  
**1-800-JETTRIP (1-800-538-8747)**



# HERTZ INTRODUCES NEW LOW DAILY ECONOMY FARES. ANY CAR, ANY DAY, ANYWHERE



## ANY QUESTIONS?

Hertz and Pacific Express are making travelling easier. Hertz Car Rental Reservations are now available through Pacific Express at 1-800-538-8747, or call Hertz at 1-800-654-3131.



### #1 For Everyone

Hertz rents Fords and other fine cars.

No charge for mileage. Available to all U.S. corporate and participating licensee locations. Rates are non-discountable and gas is not included.



"See what we're up to!"

**PACIFIC  
EXPRESS**  
PACIFIC EXPRESS PAC™  
For Important Small Packages



**Next Flight Service For Important Small Packages**  
When you choose Pacific Express Pac™ you have chosen the most reliable same day small package delivery service available to cities served by Pacific Express.  
Flight connections for Pacific Express Pac™ are handled with the same TLC as our passengers.  
The next time you have an important package or document, ship it Pacific Express Pac™.

### General Information

1. Pacific Express Pac™ is Pacific Express' airport-to-airport small package delivery service.
2. Bring small packages or envelopes to the Pacific Express ticket counter at least one half-hour prior to scheduled flight departure.
3. Your packages will receive priority handling on the first available flight.
4. Packages will be ready for pick up by the consignee within one half-hour after flight arrival.

### Requirements

1. 70 lbs. maximum weight—No lot shipments.
2. Package size not to exceed 90 inches (length + width + height).
3. Maximum declared value not to exceed \$500.
4. No animals, perishables, or restricted materials accepted.
5. Charges prepaid by cash or credit card—we accept American Express, MasterCard, Bank Americard, Visa, Diners Club, Carte Blanche and air travel cards.
6. Charges to any city we serve: **\$15** (up to 50 lbs.); **\$30** (51-70lbs.).

### Guarantee

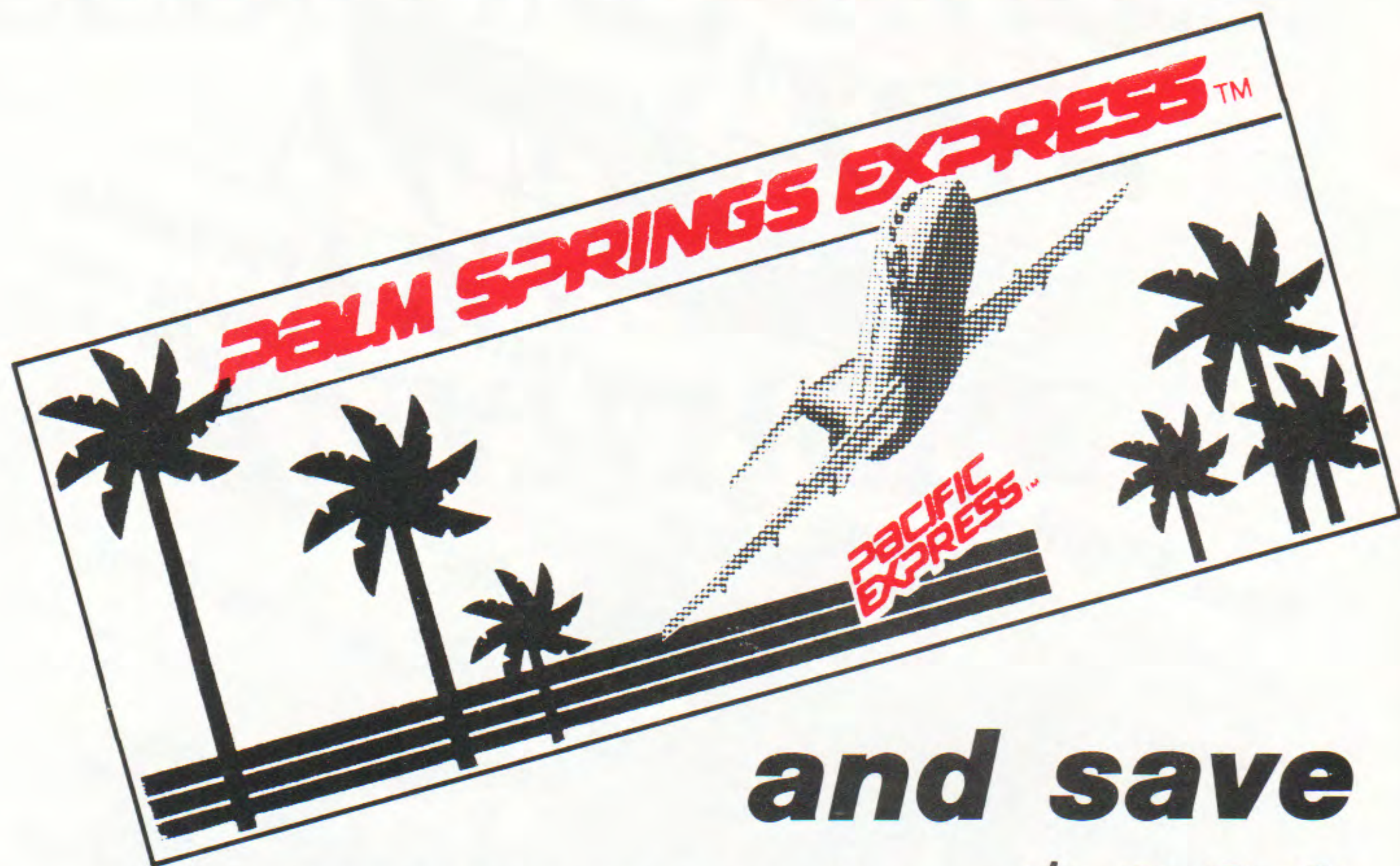
In the event of a controllable misdelivery on a shipment where the shipper designated a flight, Pacific Express will refund 50% of the airport to airport charge. This 50% money back guarantee is offered when such misdeliveries are caused by other than the weather or mechanical delays.

To apply for a refund, please forward request to:  
Pacific Express  
Pacific Express Pac™ Department  
1103 Fortress Street  
Chico, CA 95926

Include airbill number, origin and destination of package, flight(s) and date specified.  
For information on Pacific Express Pac™ reservations number please call your Local Pacific Express reservations number or 916-893-6665



**Pacific Express  
and Palm Springs  
can make you feel  
like a million . . .**



**and save  
you up to \$390**

**Introducing the Palm Springs  
Express™ Ticket Book.**

Now you can save up to \$320.00 from the San Francisco Bay Area and up to \$390.00 from Portland.

Imagine, San Francisco, Oakland or San Jose to Palm Springs for \$63.00 (Regularly \$95.00); Portland to Palm Springs only \$126.00 (Regularly \$165.00) forever!

Let Pacific Express jet you there at these locked in low air fares when you purchase the Palm Springs Express™ Ticket Book for only \$630.00 (save up to \$390.00).

Palm Springs Express™ Ticket Books contain 10 (ten) flight coupons valid forever on Pacific Express flights. One, two, or three Palm Springs Express™ coupons will be required depending on flight itinerary.

**“Feel like a Million in Palm Springs!”.**

**Palm Springs Express™ Price  
\$630.00 (\$63.00 per coupon).**

Call your travel agent or Pacific Express  
and feel like a million in Palm Springs!

**GENERAL INFORMATION**

**CREDIT CARDS**

Pacific Express will accept American Express, Master Charge, Bank Americard/Visa, Universal Air Travel Cards, Carte Blanche, and Diner's Club.

**AIRCRAFT**

Pacific Express utilizes BAC 1-11 or Boeing 737 jet aircraft on all flights.

**SECURITY**

For your security all passengers and their handcarried items must be inspected in accordance with the government-sponsored security program. Passengers should proceed through security inspection at least 30 minutes prior to departure time.

**CHECK-IN**

Pacific Express requests that passengers be at the Pacific Express boarding gate for check-in at least 20 minutes before scheduled departure time. Reservations of passengers presenting themselves at the Pacific Express boarding gate less than 10 MINUTES before the scheduled departure of a flight will be subject to cancellation.

**BAGGAGE LIABILITY**

Passengers name identification must be placed on the outside of all checked baggage. Baggage identification labels are available from Pacific Express at no cost. Liability for baggage between points in the U.S. will not exceed \$750.00 unless you declare a higher valuation and pay an extra charge. Excess valuation cannot be declared for certain checked valuable items such as jewelry, negotiable instruments, currency, and antiques.

**FREE BAGGAGE ALLOWANCE**

(Per Passenger) 1 piece of baggage with linear dimensions (length+height+width) not exceeding 62 inches, plus 1 piece of baggage with linear dimensions not exceeding 55 inches. One or more additional pieces, totaling not more than 45 inches may be carried on board provided it fits beneath the seat; approximate dimensions not to exceed 10"×16"×19". In addition to size, no single piece can weigh more than 70 pounds.

**EXCESS BAGGAGE**

A standard fee of \$7.00 will be charged for each of the first four pieces, and \$28.00 for each additional piece. The items listed below are subject to the special charges regardless of the total baggage carried.

Bicycles—\$14.00

Scuba Gear—\$7.00

Surfboards—\$14.00

Household Pets—\$21.00

**ARTICLES THAT ARE RESTRICTED IN PASSENGER BAGGAGE**

Medicinal and toilet articles necessary for the passenger during the journey in quantities that do not exceed 75 ounces (net weight ounces and fluid ounces), and the capacity of each container other than an aerosol container, does not exceed 16 fluid ounces or 1 pound of material may be carried without prior approval but for safety reasons, restricted articles, such as those listed below should not be carried in the passenger's baggage.

**HAZARDOUS MATERIALS**

Federal regulations prohibit carrying of compressed gases (flammable, non-flammable and poisonous); Corrosives (such as acids, alkalis and wet cell batteries); Explosives, munitions, fireworks and flares; Flammable liquids and solids (such as lighter or heating fuels, matches and articles which are easily ignited); Oxidizing materials (such as bleaching powder and peroxides); Poisons and tear gases; Radioactive materials; Other restricted articles (such as mercury, magnetized materials, offensive or irritating materials).

**NO SMOKING**

Sections are provided on all Pacific Express aircraft for non-smokers. Generally, the forward portion of the aircraft is reserved for non-smokers. Signs are posted in the cabin designating the no smoking sections.

**DENIED BOARDING COMPENSATION**

If you are denied boarding on a flight for which you have a confirmed reservation, you may be eligible for Denied Boarding Compensation. Check with a Pacific Express representative for details.

**PACIFIC  
EXPRESS™**

Pacific Express Inc.  
General Offices  
1103 Fortress Street  
Chico CA 95926 (916) 893-6500

*“See what we're up to!”*