

# PSA

## FLIGHT SCHEDULE



**UTAH SKI VACATION . . . pg. 6**

---

Effective JANUARY 15, 1981

Schedule subject to change without notice.

---





# PSA

## FLIGHT SCHEDULE

UTAH SKI VACATION . . . pg. 6

**PACIFIC SOUTHWEST AIRLINES**

3225 North Harbor Drive  
San Diego, California 92101

Effective JANUARY 15, 1981

Schedule subject to change without notice.



## FOR PASSENGER RESERVATIONS CALL:

Burbank-Glendale (213) 841-3800	Ontario-Pomona (714) 983-0481	San Diego (714) 298-4611
Fremont-Newark (415) 489-6530	Orange County (714) 834-1131	S.D. North County (714) 743-0811 or (714) 753-0181
Fresno (209) 252-2821	Palo Alto-Los Altos (415) 324-2527	San Fernando Valley (213) 787-4750
Inglewood (213) 646-9222	Pasadena-East L.A. (213) 579-4133	San Francisco (415) 761-0818
Lake Tahoe (702) 588-5476	Phoenix/Scottsdale (602) 258-7355	San Jose-Sunnyvale (408) 286-4720
Las Vegas (702) 382-1905	Provo (801) 377-4084	San Mateo (415) 873-9011
Long Beach-S.Bay (213) 637-6767	Puerto Vallarta 2-14-59	Stockton (209) 982-4623
Los Angeles (213) 776-0125	Reno (702) 329-9365	Tucson (602) 623-3428
Marin County (415) 383-3681	Riverside (714) 824-1500	Walnut Creek (415) 933-0191
Mazatlan 1-75-01	Sacramento (916) 922-8021	
Oakland-Hayward (415) 568-4433	Salt Lake City (801) 355-4433	
Ogden (801) 627-2460	San Bernardino (714) 824-1500	

## 1981 CALENDAR

JANUARY							FEBRUARY							MARCH						
S	M	T	W	T	F	S	S	M	T	W	T	F	S	S	M	T	W	T	F	S
				1	2	3	1	2	3	4	5	6	7	1	2	3	4	5	6	7
4	5	6	7	8	9	10	8	9	10	11	12	13	14	8	9	10	11	12	13	14
11	12	13	14	15	16	17	15	16	17	18	19	20	21	15	16	17	18	19	20	21
18	19	20	21	22	23	24	22	23	24	25	26	27	28	22	23	24	25	26	27	28
25	26	27	28	29	30	31								29	30	31				

## AIR CARGO AIRPORT LOCATIONS:

Burbank (213) 842-2542	Oakland (415) 562-1664	San Francisco (415) 877-5560
Las Vegas (702) 736-7939	Ontario (714) 983-5016	San Jose (408) 294-5046
Los Angeles (213) 646-6897 or (213) 776-5015	Phoenix (602) 273-4780	Salt Lake City (801) 539-2534
	San Diego (714) 231-5523	Sacramento (916) 927-1352

Flight Leaves Via/Stops Arrives Freq. Flight Leaves Via/Stops Arrives Freq.

## BURBANK (BUR)

RESERVATIONS (213) 841-3800

### To LAS VEGAS

112	10:00a	nonstop	10:49a
306	1:15p	nonstop	2:04p Ex Th Su
306 Discontinued after Jan.27, 1981			
608	7:40p	nonstop	8:29p Ex Sa

### From LAS VEGAS

257	11:20a	nonstop	12:09p Ex Th Su
257 Discontinued after Jan.27, 1981			
407	3:45p	nonstop	4:34p
853	8:15p	nonstop	9:02p Ex Sa

### To OAKLAND

157	8:30a	nonstop	9:28a Ex Su
253	1:05p	nonstop	2:03p
351	4:00p	nonstop	4:58p F Su
753	7:35p	nonstop	8:33p

### From OAKLAND

156	7:05a	nonstop	8:00a Ex Su
254	11:35a	nonstop	12:30p
258	2:35p	nonstop	3:30p F Su
456	5:30p	nonstop	6:25p

### To SACRAMENTO

111	7:50a	nonstop	8:53a Ex Su
311	11:25a	nonstop	12:29p
615	6:55p	nonstop	7:59p Ex Sa

### From SACRAMENTO

112	8:35a	nonstop	9:34a Ex Su
212	1:00p	nonstop	1:59p
512	6:05p	nonstop	7:04p Ex Sa

### To SAN DIEGO

106	8:20a	nonstop	8:54a Ex Su
212	2:25p	nonstop	2:59p

### From SAN DIEGO

111	6:55a	nonstop	7:28a Ex Su
503	5:55p	nonstop	6:30p

### To SAN FRANCISCO

773	7:00a	nonstop	8:03a Ex Sa Su
273	8:40a	nonstop	9:43a
171	11:45a	nonstop	12:45p
179	2:45p	nonstop	3:45p
471	4:20p	nonstop	5:20p
675	5:50p	nonstop	6:50p
771	7:20p	nonstop	8:20p Ex Sa

### From SAN FRANCISCO

170	7:10a	nonstop	8:08a Ex Sa Su
174	8:50a	nonstop	9:48a Ex Su
178	9:15a	nonstop	10:13a Su
272	10:15a	nonstop	11:12a
276	1:15p	nonstop	2:12p
374	4:20p	nonstop	5:17p
670	5:50p	nonstop	6:47p Ex Sa
772	7:20p	nonstop	8:17p

### To SAN JOSE

103	7:45a	nonstop	8:40a Ex Su
303	12:30p	nonstop	1:25p
407	5:00p	nonstop	5:55p
503	6:55p	nonstop	7:50p

### From SAN JOSE

106	7:05a	nonstop	7:58a Ex Su
208	11:00a	nonstop	11:50p
308	3:00p	nonstop	3:50p
608	6:25p	nonstop	7:15p

## LAS VEGAS (LAS)

RESERVATIONS (702) 382-1905

### To BURBANK

257	11:20a	nonstop	12:09p Ex Th Su
257 Discontinued after Jan.27, 1981			
407	3:45p	nonstop	4:34p
853	8:15p	nonstop	9:02p Ex Sa

### From BURBANK

112	10:00a	nonstop	10:49a
306	1:15p	nonstop	2:04p Ex Th Su
306 Discontinued after Jan.27, 1981			
608	7:40p	nonstop	8:29p Ex Sa

### To LOS ANGELES

229	8:55a	nonstop	9:47a
325	10:55a	nonstop	11:47a
425	12:55p	nonstop	1:47p
385	2:50p	nonstop	3:40p
447	4:55p	nonstop	5:47p Ex Sa
725	6:55p	nonstop	7:47p
729	8:55p	nonstop	9:47p Ex Sa
825	10:55p	nonstop	11:45p

### From LOS ANGELES

124	7:30a	nonstop	8:22a
128	9:30a	nonstop	10:22a
228	11:30a	nonstop	12:22p
320	1:30p	nonstop	2:20p
420	3:30p	nonstop	4:20p Ex Sa
524	5:30p	nonstop	6:22p
624	7:30p	nonstop	8:20p Ex Sa
820	9:30p	nonstop	10:22p

Flights shown in red operate with DC-9 Super 80 aircraft.



Flight Leaves Via/Stops Arrives Freq. Flight Leaves Via/Stops Arrives Freq.

## LAS VEGAS (LAS)

(Continued)

RESERVATIONS (702) 382-1905

### To OAKLAND

257/253	11:20a	BUR	2:03p	Ex Th Su	146/128	7:15a	LAX	10:22a	Ex Sa Su
257/253	Discontinued after Jan.27, 1981				254/306	11:35a	BUR	2:04p	Ex Th Su
447	4:55p	1-stop	7:15p	Ex Sa	254/306	Discontinued after Jan.27, 1981			
					456/608	5:30p	BUR	8:29p	Ex Sa

### From OAKLAND

146/128	7:15a	LAX	10:22a	Ex Sa Su	254/306	11:35a	BUR	2:04p	Ex Th Su
254/306	Discontinued after Jan.27, 1981				254/306	Discontinued after Jan.27, 1981			
456/608	5:30p	BUR	8:29p	Ex Sa					

### To PUERTO VALLARTA

229/44	8:55a	LAX	3:20p		43/624	4:10p	LAX	8:20p	Ex Sa
--------	-------	-----	-------	--	--------	-------	-----	-------	-------

### From PUERTO VALLARTA

43/624	4:10p	LAX	8:20p	Ex Sa					
--------	-------	-----	-------	-------	--	--	--	--	--

### To SACRAMENTO

325/285	10:55a	LAX	2:08p		112	8:35a	1-stop	10:49a	Ex Su
425/381	12:55p	LAX	4:07p	Ex Sa	582/624	5:20p	LAX	8:20p	Ex Sa
385/589	2:50p	LAX	6:07p		512/608	6:05p	BUR	8:29p	Ex Sa
725/987	6:55p	LAX	10:37p						

### From SACRAMENTO

112	8:35a	1-stop	10:49a	Ex Su					
582/624	5:20p	LAX	8:20p	Ex Sa					
512/608	6:05p	BUR	8:29p	Ex Sa					

### To SAN DIEGO

229/982	8:55a	LAX	11:30a		476	7:35a	nonstop	8:25a	Th Su
431	1:45p	nonstop	2:57p		376	10:10a	nonstop	11:00a	M F
447/582	4:55p	LAX	7:24p	Ex Sa	376	Effective Feb. 2, 1981			
677	7:00p	nonstop	7:50p	Th Su	234	12:20p	nonstop	11:33a	
677	Discontinued after Feb. 1, 1981				483/524	3:30p	LAX	6:22p	
677	7:00p	nonstop	7:50p	ExTWSa	76	6:55p	nonstop	7:45p	Ex Sa
677	Effective Feb. 2, 1981								
577	9:00p	nonstop	9:49p	Ex Sa					

### From SAN DIEGO

476	7:35a	nonstop	8:25a	Th Su					
376	10:10a	nonstop	11:00a	M F					
376	Effective Feb. 2, 1981								
234	12:20p	nonstop	11:33a						
483/524	3:30p	LAX	6:22p						
76	6:55p	nonstop	7:45p	Ex Sa					

### To SAN FRANCISCO

229	8:55a	1-stop	11:22a		128	8:00a	1-stop	10:22a	
325	10:55a	1-stop	1:22p		228	10:00a	1-stop	12:22p	
425	12:55p	1-stop	3:17p		234	10:45a	1-stop	1:13p	
431	1:45p	1-stop	4:19p	Ex Sa	320	12:00n	1-stop	2:20p	
407/675	3:45p	BUR	6:50p		420	2:00p	1-stop	4:20p	Ex Sa
447/35	4:55p	LAX	8:18p	Ex Sa	524	4:00p	1-stop	6:22p	
725	6:55p	1-stop	9:18p		624	6:00p	1-stop	8:20p	Ex Sa
					820	8:00p	1-stop	10:22p	

### From SAN FRANCISCO

128	8:00a	1-stop	10:22a						
228	10:00a	1-stop	12:22p						
234	10:45a	1-stop	1:13p						
320	12:00n	1-stop	2:20p						
420	2:00p	1-stop	4:20p	Ex Sa					
524	4:00p	1-stop	6:22p						
624	6:00p	1-stop	8:20p	Ex Sa					
820	8:00p	1-stop	10:22p						

### To SAN JOSE

325/265	10:55a	LAX	2:00p	Ex Sa Su	160/128	7:00a	LAX	10:22a	Ex Sa Su
407	3:45p	1-stop	5:55p		208/306	11:00a	BUR	2:04p	Ex Th Su
447/665	4:55p	LAX	8:00p	Ex Sa	208/306	Discontinued after Jan.27, 1981			
					564/624	5:30p	LAX	8:20p	Ex Sa
					608	6:25p	1-stop	8:29p	Ex Sa
					664/820	7:00p	LAX	10:22p	

### From SAN JOSE

160/128	7:00a	LAX	10:22a	Ex Sa Su					
208/306	11:00a	BUR	2:04p	Ex Th Su					
208/306	Discontinued after Jan.27, 1981								
564/624	5:30p	LAX	8:20p	Ex Sa					
608	6:25p	1-stop	8:29p	Ex Sa					
664/820	7:00p	LAX	10:22p						

Flights shown in red operate with DC-9 Super 80 aircraft.

## LOS ANGELES (LAX)

RESERVATIONS (213) 776-0125

### To LAS VEGAS

124	7:30a	nonstop	8:22a		229	8:55a	nonstop	9:47a	
128	9:30a	nonstop	10:22a		325	10:55a	nonstop	11:47a	
228	11:30a	nonstop	12:22p		425	12:55p	nonstop	1:47p	
320	1:30p	nonstop	2:20p		385	2:50p	nonstop	3:40p	
420	3:30p	nonstop	4:20p	Ex Sa	447	4:55p	nonstop	5:47p	Ex Sa
524	5:30p	nonstop	6:22p		725	6:55p	nonstop	7:47p	
624	7:30p	nonstop	8:20p	Ex Sa	729	8:55p	nonstop	9:47p	Ex Sa
820	9:30p	nonstop	10:22p		825	10:25p	nonstop	11:45p	

### From LAS VEGAS

229	8:55a	nonstop	9:47a						
325	10:55a	nonstop	11:47a						
425	12:55p	nonstop	1:47p						
385	2:50p	nonstop	3:40p						
447	4:55p	nonstop	5:47p	Ex Sa					
725	6:55p	nonstop	7:47p						
729	8:55p	nonstop	9:47p	Ex Sa					
825	10:25p	nonstop	11:45p						

### To OAKLAND

141	7:00a	nonstop	8:00a	Ex Sa Su	146	7:15a	nonstop	8:20a	Ex Sa Su
149	8:40a	nonstop	9:45a		148	8:30a	nonstop	9:35a	
241	10:05a	nonstop	11:08a	Ex Su	242	10:15a	nonstop	11:20a	Ex Su
145	12:10p	nonstop	1:13p	Ex Sa	142	11:40a	nonstop	12:42p	
247	2:05p	nonstop	3:05p		344	1:45p	nonstop	2:45p	Ex Sa
343	4:35p	nonstop	5:35p	Ex Sa	346	3:40p	nonstop	4:43p	
447	6:15p	nonstop	7:15p		542	6:05p	nonstop	7:08p	Ex Sa
741	7:40p	nonstop	8:40p		742	7:45p	nonstop	8:45p	

### From OAKLAND

146	7:15a	nonstop	8:20a	Ex Sa Su					
148	8:30a	nonstop	9:35a						
242	10:15a	nonstop	11:20a	Ex Su					
142	11:40a	nonstop	12:42p						
344	1:45p	nonstop	2:45p	Ex Sa					
346	3:40p	nonstop	4:43p						
542	6:05p	nonstop	7:08p	Ex Sa					
742	7:45p	nonstop	8:45p						

### To PHOENIX

32	7:55a	nonstop	9:59a	Ex Sa Su	31	7:15a	nonstop	7:19a	Ex Sa Su
364	11:25a	nonstop	1:29p		323	10:45a	nonstop	10:49a	
36	4:10p	nonstop	6:14p		361	2:00p	nonstop	2:04p	
620	6:35p	nonstop	8:39p		35	6:45p	nonstop	6:49p	

### From PHOENIX

31	7:15a	nonstop	7:19a	Ex Sa Su					
323	10:45a	nonstop	10:49a						
361	2:00p	nonstop	2:04p						
35	6:45p	nonstop	6:49p						

### To PUERTO VALLARTA

44	10:40a	nonstop	3:20p		43	4:10p	nonstop	4:50p	
----	--------	---------	-------	--	----	-------	---------	-------	--

### From PUERTO VALLARTA

43	4:10p	nonstop	4:50p						
----	-------	---------	-------	--	--	--	--	--	--

### To SACRAMENTO

181	6:55a	nonstop	8:05a	Ex Su	786	6:40a	nonstop	7:46a	Ex Su
983	10:20a	nonstop	11:28a		982	9:25a	nonstop	10:31a	
285	1:00p	nonstop	2:08p		184	12:00n	nonstop	1:05p	
381	3:00p	nonstop	4:07p	Ex Sa	282	2:40p	nonstop	3:45p	Ex Sa
589	5:00p	nonstop	6:07p		582	5:20p	nonstop	6:25p	
987	9:30p	nonstop	10:37p		782	8:35p	nonstop	9:40p	

### From SACRAMENTO

786	6:40a	nonstop	7:46a	Ex Su					
982	9:25a	nonstop	10:31a						
184	12:00n	nonstop	1:05p						
282	2:40p	nonstop	3:45p	Ex Sa					
582	5:20p	nonstop	6:25p						
782	8:35p	nonstop	9:40p						

### To SALT LAKE CITY

55	8:10a	nonstop	10:45a		50	7:05a	nonstop	7:40a	Ex Su
53	1:35p	nonstop	4:10p		56	11:30a	nonstop	12:05p	
59	6:05p	nonstop	8:35p	Ex Sa	654	4:45p	nonstop		



# SKI UTAH



**LOWEST PRICE ALL INCLUSIVE  
SKI VACATION**  
AIR FARE — LODGING — LIFT TICKETS

**SALT LAKE CITY \$270.00\***

PER PERSON  
DOUBLE OCCUPANCY

5 DAYS/4 NIGHTS  
ROUND TRIP AIR FARE  
4 NIGHTS, HILTON INN OR AIRPORT HILTON,  
INCLUDING ROOM TAX  
3 DAYS LIFT TICKETS AT 9 SKI AREAS

\*Scheduled Friday or Saturday arrivals only. Air Service from Los Angeles International Airport. Add \$10.00 for San Diego departure.

CALL YOUR TRAVEL AGENT  
OR CALL DIRECT  
800-532-3744

**PSA TOURS/CUSH TOURS, INC.**

Effective February 1, thru March 31, 1981 Schedule  
and Fares subject to change without notice.

Flight Leaves Via/Stops Arrives Freq. Flight Leaves Via/Stops Arrives Freq.

## LOS ANGELES (LAX)

(Continued)

RESERVATIONS (213) 776-0125

### To SAN FRANCISCO

### From SAN FRANCISCO

121	7:15a	nonstop	8:20a	Ex Sa Su	126	7:00a	nonstop	8:04a	Ex Sa Su
127	8:15a	nonstop	9:22a		128	8:00a	nonstop	9:07a	
221	9:15a	nonstop	10:22a	Ex Su	44	9:00a	nonstop	10:07a	
229	10:15a	nonstop	11:22a		228	10:00a	nonstop	11:07a	
323	11:15a	nonstop	12:22p		222	11:00a	nonstop	12:07p	Ex Su
325	12:15p	nonstop	1:22p		320	12:00n	nonstop	1:07p	
421	1:15p	nonstop	2:22p	Ex Sa	326	1:00p	nonstop	2:03p	
425	2:15p	nonstop	3:17p		420	2:00p	nonstop	3:03p	
521	3:15p	nonstop	4:17p		424	3:00p	nonstop	4:03p	Ex Sa
527	4:15p	nonstop	5:17p	Ex Sa	524	4:00p	nonstop	5:04p	
623	5:15p	nonstop	6:18p		620	5:00p	nonstop	6:04p	
43	6:15p	nonstop	7:18p		624	6:00p	nonstop	7:04p	Ex Sa
35	7:15p	nonstop	8:18p	Ex Sa	722	7:00p	nonstop	8:04p	
725	8:15p	nonstop	9:18p		820	8:00p	nonstop	9:04p	
821	9:15p	nonstop	10:18p		826	10:00p	nonstop	11:03p	Ex Sa

### To SAN JOSE

### From SAN JOSE

161	7:00a	nonstop	8:00a	Ex Sa Su	160	7:00a	nonstop	7:59a	Ex Sa Su
163	8:30a	nonstop	9:30a		162	8:30a	nonstop	9:29a	
261	10:00a	nonstop	11:00a	Ex Su	364	10:00a	nonstop	10:59a	Ex Su
265	1:00p	nonstop	2:00p	Ex Sa	360	12:00n	nonstop	12:57p	
361	2:30p	nonstop	3:30p		362	2:30p	nonstop	3:27p	Ex Sa
461	4:00p	nonstop	5:00p	Ex Sa	462	4:00p	nonstop	4:57p	
565	5:30p	nonstop	6:30p		564	5:30p	nonstop	6:27p	Ex Sa
665	7:00p	nonstop	8:00p		664	7:00p	nonstop	7:57p	
863	8:30p	nonstop	9:29p	F	862	8:30p	nonstop	9:27p	F

## OAKLAND (OAK)

RESERVATIONS (415) 568-4433

### To BURBANK

### From BURBANK

156	7:05a	nonstop	8:00a	Ex Su	157	8:30a	nonstop	9:28a	Ex Su
254	11:35a	nonstop	12:30p		253	1:05p	nonstop	2:03p	
258	2:35p	nonstop	3:30p	F Su	351	4:00p	nonstop	4:58p	F Su
456	5:30p	nonstop	6:25p		753	7:35p	nonstop	8:33p	

### To LAS VEGAS

### From LAS VEGAS

146/128	7:15a	LAX	10:22a	Ex Sa Su	257/253	11:20a	BUR	2:03p	Ex Th Su
254/306	11:35a	BUR	2:04p	Ex Th Su	257/253	Discontinued after Jan.27, 1981.			
					447	4:55p	1-stop	7:15p	Ex Sa
254/306	Discontinued after Jan.27, 1981.								
456/608	5:30p	BUR	8:29p	Ex Sa					

### To LOS ANGELES

### From LOS ANGELES

146	7:15a	nonstop	8:20a	Ex Sa Su	141	7:00a	nonstop	8:00a	Ex Sa Su
148	8:30a	nonstop	9:35a		149	8:40a	nonstop	9:45a	
242	10:15a	nonstop	11:20a	Ex Su	241	10:05a	nonstop	11:08a	Ex Su
142	11:40a	nonstop	12:42p		145	12:10p	nonstop	1:13p	Ex Sa
344	1:45p	nonstop	2:45p	Ex Sa	247	2:05p	nonstop	3:05p	
346	3:40p	nonstop	4:43p		343	4:35p	nonstop	5:35p	Ex Sa
542	6:05p	nonstop	7:08p	Ex Sa	447	6:15p	nonstop	7:15p	
742	7:45p	nonstop	8:45p		741	7:40p	nonstop	8:40p	

### To PHOENIX

### From PHOENIX

148/364	8:30a	LAX	1:29p		31/149	7:15a	LAX	9:45a	Ex Sa Su
344/36	1:45p	LAX	6:14p	Ex Sa	323/145	10:45a	LAX	1:13p	Ex Sa
346/620	3:40p	LAX	8:39p						

Flights shown in red operate with DC-9 Super 80 aircraft.



Flight	Leaves	Via/Stops	Arrives	Freq.	Flight	Leaves	Via/Stops	Arrives	Freq.
--------	--------	-----------	---------	-------	--------	--------	-----------	---------	-------

## OAKLAND (OAK)

(Continued)

RESERVATIONS (415) 568-4433

To PUERTO VALLARTA					From PUERTO VALLARTA				
--------------------	--	--	--	--	----------------------	--	--	--	--

148/44	8:30a	LAX	3:20p		43/447	4:10p	LAX	7:15p	
--------	-------	-----	-------	--	--------	-------	-----	-------	--

To SAN DIEGO					From SAN DIEGO				
--------------	--	--	--	--	----------------	--	--	--	--

156/106	7:05a	BUR	8:54a	Ex Su	167	6:55a	1-stop	8:44a	Ex Su
168	9:05a	nonstop	10:15a	Ex Su	55/149	7:05a	LAX	9:45a	
242/56	10:15a	LAX	1:10p	Ex Su	47	1:20p	nonstop	2:33p	
48	3:05p	nonstop	4:15p		567	4:00p	1stop	5:49p	
566	6:10p	nonstop	7:20p		503/753	5:55p	BUR	8:33p	
742/782	7:45p	LAX	10:44p		869	7:55p	1-stop	9:44p	F Su
866	10:10p	nonstop	11:20p	F Su					

To SAN JOSE					From SAN JOSE				
-------------	--	--	--	--	---------------	--	--	--	--

					168	8:25a	nonstop	8:44a	Ex Su
					566	5:30p	nonstop	5:49p	
					866	9:25p	nonstop	9:44p	F Su

## ONTARIO (ONT)

RESERVATIONS (714) 983-0481

To SAN FRANCISCO					From SAN FRANCISCO				
------------------	--	--	--	--	--------------------	--	--	--	--

191	7:35a	nonstop	8:39a		192	9:10a	nonstop	10:14a	Ex Su
291	10:45a	nonstop	11:49a	Ex Su	292	1:05p	nonstop	2:09p	
391	2:40p	nonstop	3:45p		392	4:50p	nonstop	5:54p	
491	6:25p	nonstop	7:29p	Ex Sa	492	8:00p	nonstop	9:04p	Ex Sa

## PHOENIX (PHX)

RESERVATIONS (602) 258-7355

To LOS ANGELES					From LOS ANGELES				
----------------	--	--	--	--	------------------	--	--	--	--

31	7:15a	nonstop	7:19a	Ex Sa Su	32	7:55a	nonstop	9:59a	Ex Sa Su
323	10:45a	nonstop	10:49a		364	11:25a	nonstop	1:29p	
361	2:00p	nonstop	2:04p		36	4:10p	nonstop	6:14p	
35	6:45p	nonstop	6:49p		620	6:35p	nonstop	8:39p	

To OAKLAND					From OAKLAND				
------------	--	--	--	--	--------------	--	--	--	--

31/149	7:15a	LAX	9:45a	Ex Sa Su	148/364	8:30a	LAX	1:29p	
323/145	10:45a	LAX	1:13p	Ex Sa	344/36	1:45p	LAX	6:14p	Ex Sa
					346/620	3:40p	LAX	8:39p	

To SACRAMENTO					From SACRAMENTO				
---------------	--	--	--	--	-----------------	--	--	--	--

323/285	10:45a	LAX	2:08p		982/400	9:25a	SAN	3:40p	
35/987	6:45p	LAX	10:37p		282/620	2:40p	LAX	8:39p	Ex Sa

To SAN DIEGO					From SAN DIEGO				
--------------	--	--	--	--	----------------	--	--	--	--

233	8:30a	nonstop	8:26a	Ex Su	230	9:30a	nonstop	11:25a	
335	11:55a	nonstop	11:51a		400	1:45p	nonstop	3:40p	
533	4:10p	nonstop	4:06p		534	7:50p	nonstop	9:45p	Ex Sa

Flights shown in red operate with DC-9 Super 80 aircraft.

Flight	Leaves	Via/Stops	Arrives	Freq.	Flight	Leaves	Via/Stops	Arrives	Freq.
--------	--------	-----------	---------	-------	--------	--------	-----------	---------	-------

## PHOENIX (PHX)

(Continued)

RESERVATIONS (602) 258-7355

To SAN FRANCISCO					From SAN FRANCISCO				
------------------	--	--	--	--	--------------------	--	--	--	--

233	8:30a	1-stop	10:09a	Ex Su	44/364	9:00a	LAX	1:29p	
323	10:45a	1-stop	12:22p		420/36	2:00p	LAX	6:14p	
335	11:55a	1-stop	1:29p		620	5:00p	1-stop	8:39p	
361/521	2:00p	LAX	4:17p		534	6:15p	1-stop	9:45p	Ex Sa
533	4:10p	1-stop	5:44p						
35	6:45p	1-stop	8:18p	Ex Sa					

To SAN JOSE					From SAN JOSE				
-------------	--	--	--	--	---------------	--	--	--	--

31/163	7:15a	LAX	9:30a	Ex Sa Su	364	10:00a	1-stop	1:29p	Ex Su
361	2:00p	1-stop	3:30p		462/620	4:00p	LAX	8:39p	
35/863	6:45p	LAX	9:29p	F					

## PUERTO VALLARTA (PVR)

RESERVATIONS 2-14-59

To LAS VEGAS					From LAS VEGAS				
--------------	--	--	--	--	----------------	--	--	--	--

43/624	4:10p	LAX	8:20p	Ex Sa	229/44	8:55a	LAX	3:20p	
--------	-------	-----	-------	-------	--------	-------	-----	-------	--

To LOS ANGELES					From LOS ANGELES				
----------------	--	--	--	--	------------------	--	--	--	--

43	4:10p	nonstop	4:50p		44	10:40a	nonstop	3:20p	
----	-------	---------	-------	--	----	--------	---------	-------	--

To OAKLAND					From OAKLAND				
------------	--	--	--	--	--------------	--	--	--	--

43/447	4:10p	LAX	7:15p		148/44	8:30a	LAX	3:20p	
--------	-------	-----	-------	--	--------	-------	-----	-------	--

To SALT LAKE CITY					From SALT LAKE CITY				
-------------------	--	--	--	--	---------------------	--	--	--	--

43/59	4:10p	LAX	8:35p	Ex Sa	50/44	7:05a	LAX	3:20p	Ex Su
-------	-------	-----	-------	-------	-------	-------	-----	-------	-------

To SAN DIEGO					From SAN DIEGO				
--------------	--	--	--	--	----------------	--	--	--	--

43/582	4:10p	LAX	7:24p		983/44	7:05a	LAX	3:20p	
--------	-------	-----	-------	--	--------	-------	-----	-------	--

To SAN FRANCISCO					From SAN FRANCISCO				
------------------	--	--	--	--	--------------------	--	--	--	--

43	4:10p	1-stop	7:18p		44	9:00a	1-stop	3:20p	
----	-------	--------	-------	--	----	-------	--------	-------	--

To SAN JOSE					From SAN JOSE				
-------------	--	--	--	--	---------------	--	--	--	--

43/665	4:10p	LAX	8:00p		162/44	8:30a	LAX	3:20p	
--------	-------	-----	-------	--	--------	-------	-----	-------	--

## SACRAMENTO (SMF)

RESERVATIONS (916) 922-8021

To BURBANK					From BURBANK				
------------	--	--	--	--	--------------	--	--	--	--

112	8:35a	nonstop	9:34a	Ex Su	111	7:50a	nonstop	8:53a	Ex Su
212	1:00p	nonstop	1:59p		311	11:25a	nonstop	12:29p	
512	6:05p	nonstop	7:04p	Ex Sa	615	6:55p	nonstop	7:59p	Ex Sa

To LAS VEGAS					From LAS VEGAS				
--------------	--	--	--	--	----------------	--	--	--	--

112	8:35a	1-stop	10:49a	Ex Su	325/285	10:55a	LAX	2:08p	
582/624	5:20p	LAX	8:20p	Ex Sa	425/381	12:55p	LAX	4:07p	Ex Sa
512/608	6:05p	BUR	8:29p	Ex Sa	385/589	2:50p	LAX	6:07p	
					725/987	6:55p	LAX	10:37p	

Flights shown in red operate with DC-9 Super 80 aircraft.



# LAS VEGAS 3 DAYS/2 NIGHTS

## \$115<sup>00</sup>\*

Per Person  
Double Occupancy

### ALL INCLUSIVE PACKAGE

#### Hacienda Hotel

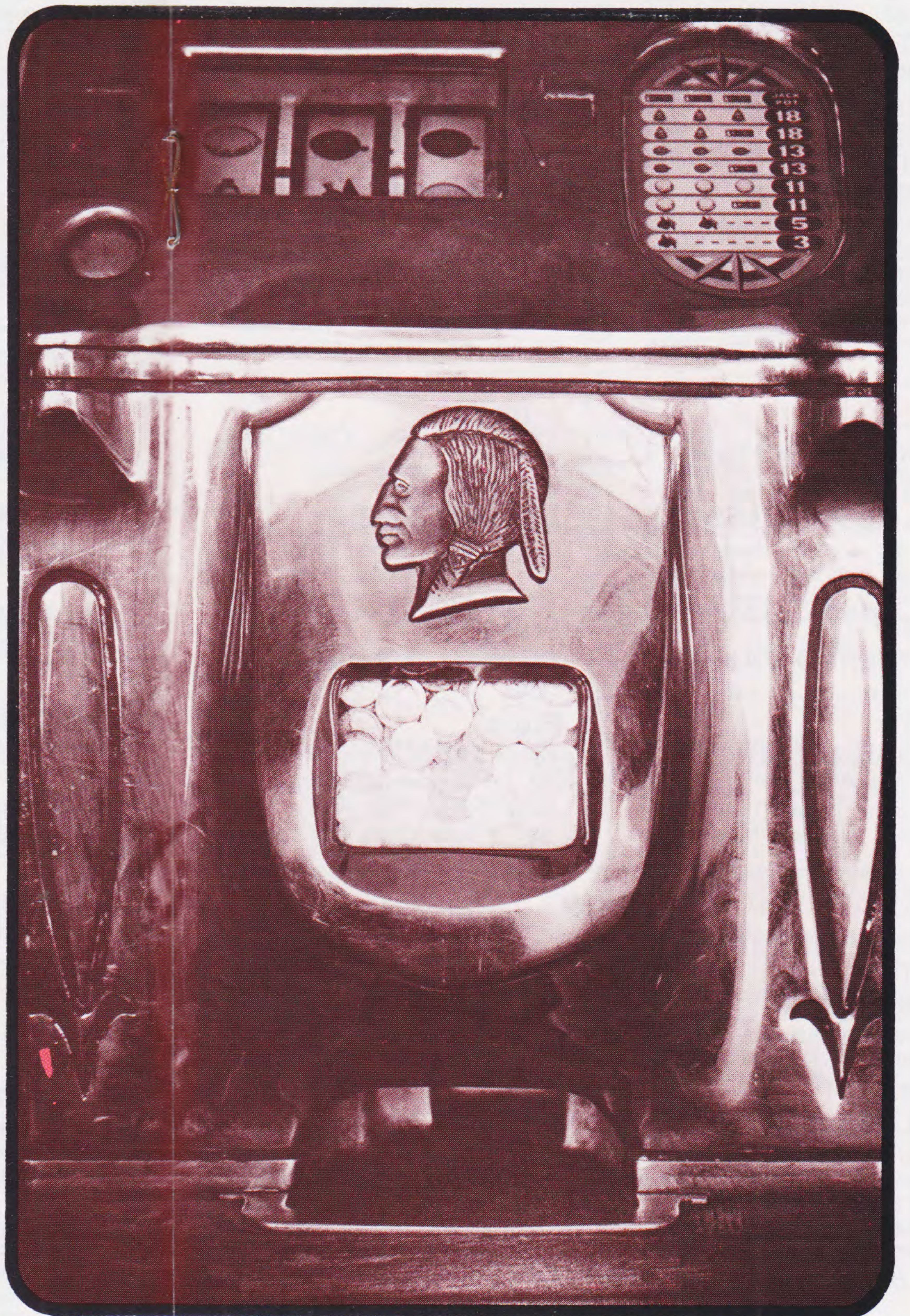
Including roundtrip  
air fare, hotel room tax  
and baggage handling.

#### Plus Show —

“Broadway Comes  
Alive” at the  
Union Plaza Hotel

CALL YOUR TRAVEL AGENT  
OR CALL DIRECT  
800-532-3744

**PSA** / CUSH TOURS INC.



\*Scheduled daily air service from San Diego. Add \$10.00 for Los Angeles or Burbank departures.

Effective January 15 thru June 1, 1981 Schedule and fares subject to change without notice.



Flight Leaves Via/Stops Arrives Freq. Flight Leaves Via/Stops Arrives Freq.

## SACRAMENTO (SMF) (Continued)

RESERVATIONS (916) 922-8021

To LOS ANGELES				From LOS ANGELES			
786	6:40a	nonstop	7:46a Ex Su	181	6:55a	nonstop	8:05a Ex Su
982	9:25a	nonstop	10:31a	983	10:20a	nonstop	11:28a
184	12:00n	nonstop	1:05p	285	1:00p	nonstop	2:08p
282	2:40p	nonstop	3:45p Ex Sa	381	3:00p	nonstop	4:07p Ex Sa
582	5:20p	nonstop	6:25p	589	5:00p	nonstop	6:07p
782	8:35p	nonstop	9:40p	987	9:30p	nonstop	10:37p

To PHOENIX				From PHOENIX			
982/400	9:25a	SAN	3:40p	323/285	10:45a	LAX	2:08p
282/620	2:40p	LAX	8:39p Ex Sa	35/987	6:45p	LAX	10:37p

To SAN DIEGO				From SAN DIEGO			
786	6:40a	1-stop	8:50a Ex Su	111	6:55a	1-stop	8:53a Ex Su
982	9:25a	1-stop	11:30a	983	9:20a	1-stop	11:28a
212	1:00p	1-stop	2:59p	285	12:00n	1-stop	2:08p
582	5:20p	1-stop	7:24p	83	4:20p	nonstop	5:34p Ex Sa
84	6:40p	nonstop	7:52p Ex Sa	503/615	5:55p	BUR	7:59p Ex Sa
782	8:35p	1-stop	10:44p	987	8:30p	1-stop	10:37p

## SALT LAKE CITY (SLC)

RESERVATIONS (801) 355-4433

To LOS ANGELES				From LOS ANGELES			
50	7:05a	nonstop	7:40a Ex Su	55	8:10a	nonstop	10:45a
56	11:30a	nonstop	12:05p	53	1:35p	nonstop	4:10p
654	4:45p	nonstop	5:20p	59	6:05p	nonstop	8:35p Ex Sa

To PUERTO VALLARTA				From PUERTO VALLARTA			
50/44	7:05a	LAX	3:20p Ex Su	43/59	4:10p	LAX	8:35p Ex Sa

To SAN DIEGO				From SAN DIEGO			
50/786	7:05a	LAX	8:50a Ex Su	55	7:05a	1-stop	10:45a
56	11:30a	1-stop	1:10p	285/53	12:00n	LAX	4:10p
654	4:45p	1-stop	6:25p	59	5:00p	1-stop	8:35p Ex Sa

## SAN DIEGO (SAN)

RESERVATIONS (714) 298-4611

To BURBANK				From BURBANK			
111	6:55a	nonstop	7:28a Ex Su	106	8:20a	nonstop	8:54a Ex Su
503	5:55p	nonstop	6:30p	212	2:25p	nonstop	2:59p

To LAS VEGAS				From LAS VEGAS			
476	7:35a	nonstop	8:25a Th Su	229/982	8:55a	LAX	11:30a
376	10:10a	nonstop	11:00a M F	431	1:45p	nonstop	2:37p
376 Effective Feb. 2, 1981				447/582	4:55p	LAX	7:24p Ex Sa
234	12:20p	nonstop	1:13p	677	7:00p	nonstop	7:50p Th Su
483/524	3:30p	LAX	6:22p	677 Discontinued after Feb. 1, 1981			
76	6:55p	nonstop	7:45p Ex Sa	677	7:00p	nonstop	7:50p Ex TW Sa
				677 Effective Feb. 2, 1981			
				577	9:00p	nonstop	9:40p Ex Sa

Flights shown in red operate with DC-9 Super 80 aircraft.

Flight Leaves Via/Stops Arrives Freq. Flight Leaves Via/Stops Arrives Freq.

## SAN DIEGO (SAN) (Continued)

RESERVATIONS (714) 298-4611

To LOS ANGELES				From LOS ANGELES			
55	7:05a	nonstop	7:40a	786	8:15a	nonstop	8:50a Ex Su
983	9:20a	nonstop	9:55a	982	10:55a	nonstop	11:30a
285	12:00n	nonstop	12:35p	56	12:35p	nonstop	1:10p
483	3:30p	nonstop	4:04p	654	5:50p	nonstop	6:25p
59	5:00p	nonstop	5:35p Ex Sa	582	6:50p	nonstop	7:24p
987	8:30p	nonstop	9:04p	782	10:10p	nonstop	10:44p

To OAKLAND				From OAKLAND			
167	6:55a	1-stop	8:44a Ex Sa Su	156/106	7:05a	BUR	8:54a Ex Su
55/149	7:05a	LAX	9:45a	168	9:05a	nonstop	10:15a Ex Su
47	1:20p	nonstop	2:33p	242/56	10:15a	LAX	1:10p Ex Su
567	4:00p	1-stop	5:49p	48	3:05p	nonstop	4:15p
503/753	5:55p	BUR	8:33p	566	6:10p	nonstop	7:20p
869	7:55p	1-stop	9:44p F Su	742/782	7:45p	LAX	10:44p
				866	10:10p	nonstop	11:20p F Su

To PHOENIX				From PHOENIX			
230	9:30a	nonstop	11:25a	233	8:30a	nonstop	8:26a Ex Su
400	1:45p	nonstop	3:40p	335	11:55a	nonstop	11:51a
534	7:50p	nonstop	9:45p Ex Sa	533	4:10p	nonstop	4:06p

To PUERTO VALLARTA				From PUERTO VALLARTA			
983/44	9:20a	LAX	3:20p	43/582	4:10p	LAX	7:24p

To SACRAMENTO				From SACRAMENTO			
111	6:55a	1-stop	8:53a Ex Su	786	6:40a	1-stop	8:50a Ex Su
983	9:20a	1-stop	11:28a	982	9:25a	1-stop	11:30a
285	12:00n	1-stop	2:08p	212	1:00p	1-stop	2:59p
83	4:20p	nonstop	5:34p Ex Sa	582	5:20p	1-stop	7:24p
503/615	5:55p	BUR	7:59p Ex Sa	84	6:40p	nonstop	7:52p Ex Sa
987	8:30p	1-stop	10:37p	782	8:35p	1-stop	10:44p

To SALT LAKE CITY				From SALT LAKE CITY			
55	7:05a	1-stop	10:45a	50/786	7:05a	LAX	8:50a Ex Su
285/53	12:00n	LAX	4:10p	56	11:30a	1-stop	1:10p
59	5:00p	1-stop	8:35p Ex Sa	654	4:45p	1-stop	6:25p

To SAN FRANCISCO				From SAN FRANCISCO			
133	7:15a	nonstop	8:29a Ex Su	<b>134</b>	<b>8:35a</b>	<b>nonstop</b>	<b>9:45a</b>
233	8:55a	nonstop	10:09a	234	10:45a	nonstop	11:55a
335	12:15p	nonstop	1:29p	332	2:15p	nonstop	3:25p
431	3:05p	nonstop	4:19p Ex Sa	432	4:15p	nonstop	5:25p Ex Sa
533	4:30p	nonstop	5:44p	534	6:15p	nonstop	7:25p
503/771	5:55p	BUR	8:20p Ex Sa	834	9:00p	nonstop	10:10p Ex Sa
631	7:55p	nonstop	9:09p				

Flights shown in red operate with DC-9 Super 80 aircraft.



Flight Leaves Via/Stops Arrives Freq. Flight Leaves Via/Stops Arrives Freq.

## SAN DIEGO (SAN)

(Continued)

RESERVATIONS (714) 298-4611

### To SAN JOSE

167	6:55a	nonstop	8:05a	Ex Su
365	10:15a	nonstop	11:25a	
465	1:05p	nonstop	2:15p	Ex Sa
465 Discontinued after Jan.27, 1981				
465	1:05p	nonstop	2:15p	F Su
465 Effective Jan.28, 1981				
567	4:00p	nonstop	5:10p	
503	5:55p	1-stop	7:50p	
869	7:55p	nonstop	9:05p	F Su

### From SAN JOSE

106	7:05a	1-stop	8:54a	Ex Su
168	8:25a	1-stop	10:15a	Ex Su
366	11:30a	nonstop	12:35p	
366 Discontinued after Jan.27, 1981.				
366	11:30a	nonstop	12:35p	FSaSu
366 Effective Jan.28, 1981				
466	2:45p	nonstop	3:50p	Ex Sa
566	5:30p	1-stop	7:20p	
862/782	8:30p	LAX	10:44p	F
866	9:25p	1-stop	11:20p	F Su

## SAN FRANCISCO (SFO)

RESERVATIONS (415) 761-0818

### To BURBANK

170	7:10a	nonstop	8:08a	Ex Sa Su
174	8:50a	nonstop	9:48a	Ex Su
178	9:15a	nonstop	10:13a	Su
272	10:15a	nonstop	11:12a	
276	1:15p	nonstop	2:12p	
374	4:20p	nonstop	5:17p	
670	5:50p	nonstop	6:47p	Ex Sa
772	7:20p	nonstop	8:17p	

### From BURBANK

773	7:00a	nonstop	8:03a	E
273	8:40a	nonstop	9:43a	
171	11:45a	nonstop	12:45p	
179	2:45p	nonstop	3:45p	
471	4:20p	nonstop	5:20p	
675	5:50p	nonstop	6:50p	
771	7:20p	nonstop	8:20p	Ex Sa

### To LAS VEGAS

128	8:00a	1-stop	10:22a	
228	10:00a	1-stop	12:22p	
234	10:45a	1-stop	1:13p	
320	12:00n	1-stop	2:20p	
420	2:00p	1-stop	4:20p	Ex Sa
524	4:00p	1-stop	6:22p	
624	6:00p	1-stop	8:20p	Ex Sa
820	8:00p	1-stop	10:22p	

### From LAS VEGAS

229	8:55a	1-stop	11:22a	
325	10:55a	1-stop	1:22p	
425	12:55p	1-stop	3:17p	
431	1:45p	1-stop	4:19p	Ex Sa
407/675	3:45p	BUR	6:50p	
447/35	4:55p	LAX	8:18p	Ex Sa
725	6:55p	1-stop	9:18p	

### To LOS ANGELES

126	7:00a	nonstop	8:04a	Ex Sa Su
128	8:00a	nonstop	9:07a	
44	9:00a	nonstop	10:07a	
228	10:00a	nonstop	11:07a	
222	11:00a	nonstop	12:07p	Ex Su
320	12:00n	nonstop	1:07p	
326	1:00p	nonstop	2:03p	
420	2:00p	nonstop	3:03p	
424	3:00p	nonstop	4:03p	Ex Sa
524	4:00p	nonstop	5:04p	
620	5:00p	nonstop	6:04p	
624	6:00p	nonstop	7:04p	Ex Sa
722	7:00p	nonstop	8:04p	
820	8:00p	nonstop	9:04p	
826	10:00p	nonstop	11:03p	Ex Sa

### From LOS ANGELES

121	7:15a	nonstop	8:20a	Ex Sa Su
127	8:15a	nonstop	9:22a	
221	9:15a	nonstop	10:22a	Ex Su
229	10:15a	nonstop	11:22a	
323	11:15a	nonstop	12:22p	
325	12:15p	nonstop	1:22p	
421	1:15p	nonstop	2:22p	Ex Sa
425	2:15p	nonstop	3:17p	
521	3:15p	nonstop	4:17p	
527	4:15p	nonstop	5:17p	Ex Sa
623	5:15p	nonstop	6:18p	
43	6:15p	nonstop	7:18p	
035	7:15p	nonstop	8:18p	Ex Sa
725	8:15p	nonstop	9:18p	
821	9:15p	nonstop	10:18p	

Flights shown in red operate with DC-9 Super 80 aircraft.

# HERTZ

## #1 EXPRESS SERVICE™

## The World's Fastest Way to Rent a Car.

With a Hertz #1 Express reservation, you leave your PSA flight, get on a Hertz bus and go straight to a special #1 Express booth where your car is waiting and your contract completely filled out. And it's working for you now at many of the busy airports served by PSA.

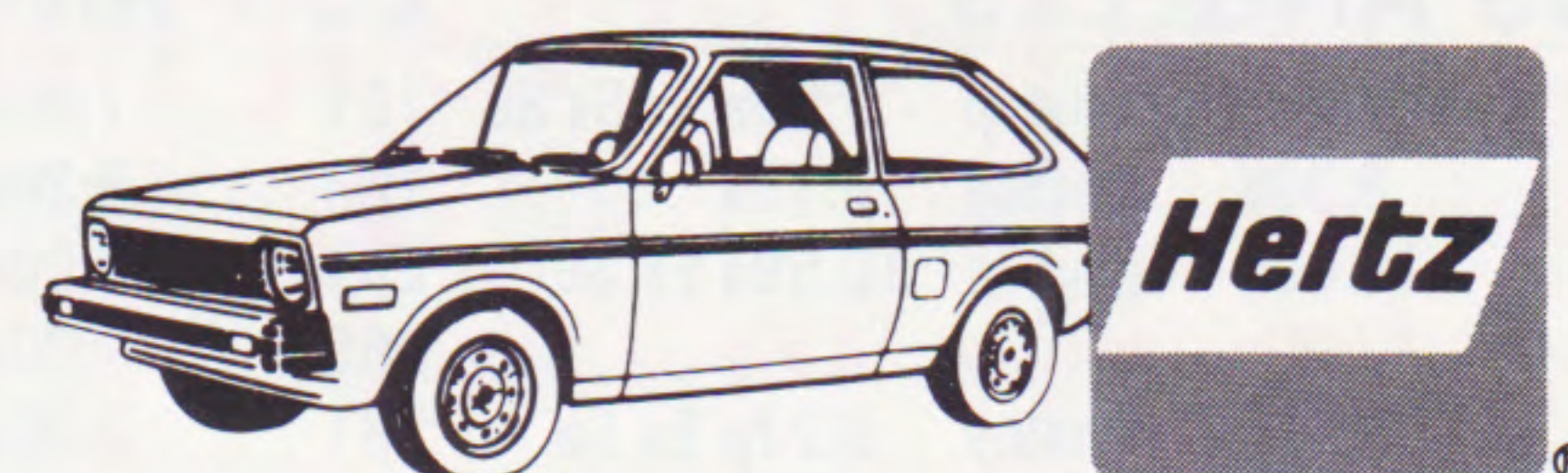
Be sure you ask for #1 Express service when you call for reservations. Or ask your travel consultant or corporate travel director to put you on the Hertz #1 Express. You'll get a #1 Express pass along with your tickets to show to the Hertz bus driver. We need your Hertz #1 Club number to make #1 Express work best for you. If you don't have a #1 Club card, just ask for an application when you call, or pick one up at any Hertz counter.

Once again, Hertz comes up with a winner... and puts you in the driver's seat faster than anyone else.

Hertz #1 Express service is available at 34 major airports, including these served by PSA:

**Burbank Los Angeles Ontario Phoenix  
Sacramento San Diego San Francisco San Jose**

# PSA



**WHERE WINNERS RENT™**  
HERTZ RENTS FORDS AND OTHER FINE CARS







## FARE SUMMARY

EFFECTIVE JANUARY 15, 1980

*All fares are one-way and are stated in U.S. dollars, including  
5% Transportation Tax  
All fares are subject to change without notice*

Between	And	Fare	Between	And	Fare
<b>BURBANK</b>	Las Vegas	\$52	<b>OAKLAND</b>	Phoenix	\$88
		40*		Puerto Vallarta	168
	Oakland	56		San Diego	64
	Sacramento	57		San Jose	25
	San Diego	35	<b>ONTARIO</b>	San Francisco	56
	San Francisco	56		San Jose	36*
<b>LAS VEGAS</b>	Los Angeles	52	<b>PHOENIX</b>	Sacramento	93
		40*		San Diego	57
	Oakland	67			36*
	Puerto Vallarta	170		San Francisco	88
	Sacramento	69	San Jose	88	
	San Diego	54	<b>PUERTO VALLARTA</b>	Salt Lake City	191
		35*		San Diego	156
	San Francisco	67		San Francisco	168
San Jose	67	San Jose		168	
<b>LOS ANGELES</b>	Oakland	56	<b>SACRAMENTO</b>	San Diego	68
		36*		<b>SAN DIEGO</b>	Salt Lake City
	Phoenix	64	San Francisco		64
		40*	San Jose		64
	Puerto Vallarta	142			
	Sacramento	57			
	Salt Lake City	84			
	San Diego	35			
	San Francisco	56			
		36*			
San Jose	56				
	36*				

\*Super Economy — applies on selected flights (seats are limited).

*This is only a general summary of the rules and conditions that apply to the listed fares as of the date shown above. The official tariffs of current fares for air travel to or from a location where tickets are sold are available for examination at that location. A full statement of all current fares, with their associated rules and conditions, is contained in the official tariffs that are in effect and on file with the Civil Aeronautics Board, 1825 Connecticut Ave., N.W., Washington, D.C. 20428.*

### MEXICO

Passengers need proof of citizenship and a Mexican tourist card, free for visits up to 90 days. Tourist cards may be obtained from the Mexican Consulate, Mexican Tourist Council, or any PSA Ticket Office. The proof of citizenship used in obtaining the tourist card should be carried to facilitate entry into Mexico, and re-entry into the U.S. Purchases up to \$300 may be brought back by residents of the U.S. duty free, including one quart of alcoholic beverage by adults. Passengers should check in 60 minutes before scheduled departure to allow time for checking of travel documents. Reservations of passengers presenting themselves at the PSA Boarding Gate less than 30 minutes before the scheduled departure of a flight will be subject to cancellation.

**Reconfirmation for returning flights must be made at least 24 hours prior to scheduled departure time.**

Passengers departing from Mexico for the U.S. will be required to pay a Mexican airport duty of 100 Pesos at the current exchange.

The rate for checked baggage in excess of the free allowance is \$12 per piece. Oversize or overweight pieces, when acceptable as baggage, are subject to a higher charge. Baggage liability for Mexico travel will be limited to \$9.07 per pound or the actual value, whichever is less.

## GENERAL INFORMATION

### CREDIT CARDS

PSA, Master Charge, BankAmericard, First National Bank of San Jose, Carte Blanche, Diner's Club, American Express and Air Travel Cards are welcome on all flights.

### CHECK-IN

PSA requests that passengers be at the PSA boarding gate for check-in at least 30 Minutes before scheduled departure time.

Reservations of passengers presenting themselves at the PSA boarding gate less than 10 MINUTES before the scheduled departure of a flight will be subject to cancellation.

### SCHEDULE

All times listed are local times. All flights are daily unless so indicated by exceptions under frequency column. For fares and information, call your local travel agent or PSA Reservations. Schedule is subject to change without notice.

### AIRCRAFT

PSA utilizes Boeing 727 and Douglas DC-9 Super 80 Fan Jets on all flights in the PSA system.

### BAGGAGE

(a) **Free Baggage Allowance** - For each ticketed passenger, the free baggage allowance is: three(3) checked bags not to exceed 62 inches, 55 inches, and 45 inches respectively in overall length, width and height. In addition, carry-on baggage may remain in the passenger's possession and be carried aboard PSA aircraft providing its dimensions allow stowage beneath a passenger seat. (Maximum outside dimensions totaling 45 inches.)

(b) **Excess Baggage** - A charge of \$7.00 for each piece of excess or oversized baggage will be made. (First four (4) pieces)

(c) **Liability** - Unless extra value is declared and charges paid before departure, PSA liability for loss of, damage to or delay in delivery of personal baggage is limited to \$750.00 per fare paying passenger.

(d) **Claims** - Damage or Lost Claims must be filed with PSA immediately upon termination of your flight.

(e) **Animals** - PSA does not accept for carriage any animals (except "seeing eye" dogs.) or reptiles in either the passenger or baggage compartments.

### ARTICLES THAT ARE RESTRICTED IN PASSENGER BAGGAGE

Medicinal and toilet articles necessary for the passenger during the journey in quantities that do not exceed 75 ounces (net weight ounces and fluid ounces), and the capacity of each container, other than an aerosol container, does not exceed 16 fluid ounces or 1 pound of material may be carried without prior approval but for safety reasons, restricted articles, such as those listed below shall not be carried in the passenger's baggage without consent of and prior arrangement with the carrier:

- Compressed gases (flammable, non-flammable and poisonous)
- Corrosives (such as acids, alkalis and wet cell batteries)
- Explosives, munitions, fireworks and flares
- Flammable liquids and solids (such as lighter or heating fuels, matches and articles which are easily ignited.)
- Oxidizing materials (such as bleaching powder and peroxides)
- Poisons and tear gases
- Radioactive materials
- Other restricted articles (such as mercury, magnetized materials, offensive or irritating materials).

### CHILDREN

PSA will accept for transportation, without charge, not more than one child under two (2) years of age, who does not occupy a separate seat and is accompanied by a passenger paying the full adult fare. Children under two (2) years of age, occupying a seat, or over two (2) years of age and under twelve (12) years of age, will be charged 50% of the adult fare when accompanied by an adult passenger paying the full adult fare. Children who are at least five (5) years of age, but less than twelve (12) years of age who are not accompanied by a passenger paying the full adult fare, will be charged the full adult fare. Children twelve (12) years of age and over will be charged the full adult fare.

### PSA RESERVATION POLICY

PSA selectively overbooks certain flights to compensate for persons holding and not utilizing reservations, thus making available more seats for those persons actually seeking them. As a result, there is a slight chance that a seat may not be available for a person holding a confirmed reservation. In that event, PSA will offer alternative transportation and compensation as provided in its applicable tariff.